

EPDM

ROOFING SYSTEMS



"The name trusted in roofing since 1906"



OUR PROMISE

THROUGH ONGOING INTERCHANGE OF EXPERIENCES WITH CONTRACTORS, MULEHIDE KEEPS ON TOP OF THE LATEST ROOFING REQUIREMENTS AND SOLUTIONS

Trusted in roofing since 1906, MuleHide is the right choice for all kinds of installations. Our time-tested and proven systems are affordable and easy to install, and they meet even the strictest demands of today's commercial, industrial, and institutional buildings — always with an eye on the future.

We can help you with everything from membrane selection to determining the best way to ensure a watertight roof. And because providing total roofing systems is our business, you can count on MuleHide to ensure the compatibility and performance of any and every component you choose.

SYSTEM BENEFITS

MULEHIDE SYSTEMS MAXIMIZE LABOR SAVINGS & ROOF LIFE-CYCLE SO CONTRACTORS MAXIMIZE PROFITS BY SELLING VALUE NOT LOW PRICE

MuleHide EPDM membranes can boast years of proven performance, covering a wide range of low-slope roofing applications, with systems for ballasted, mechanically attached and fully adhered.

- The Fully Adhered System using Acrylic Water Base Bonding Adhesive for fast installation means maximized installed cost value
- Fully Adhered Systems are ideally suited for irregular building configurations as well as steeply sloped commercial roofs, using solvent-based adhesive
- Simple & versatile MuleHide tape products make installation faster and easier
- UL & FM listed assemblies available

WARRANTY PROGRAM

MuleHide offers a variety of warranties for Commercial and Residential projects including material and system warranties.

System warranties are available for commercial projects when installed in strict compliance with MuleHide's specifications by a MuleHide Warranty Eligible Contractor. Residential projects may qualify for material warranties. Complete warranty information and requirements for the various warranties available may be found on the MuleHide web site at www.mulehide.com or by contacting MuleHide at 800-786-1492.

STRENGTH

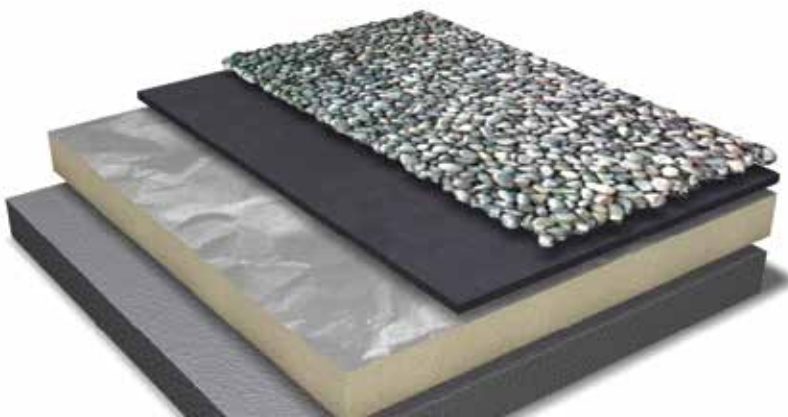
EPDM is a high tensile strength, single-ply membrane ideal for long-term watertight integrity. EPDM is lightweight, making it ideal for new construction and retrofit systems without adding excessive weight to the roof deck. Meets or exceeds ASTM standards.

FLEXIBILITY

The membrane remains flexible in hot and cold temperatures so it will not split or crack.

LONG LIFECYCLE

It provides excellent resistance to ozone and UV and can handle the coldest winters or the desert heat.



PRODUCT INFORMATION

THE EPDM SYSTEMS YOU NEED FROM THE PEOPLE YOU TRUST

MuleHide membranes are manufactured under strict quality control and are available in a wide range of sheet sizes, lengths and membrane thicknesses through the largest nationwide distribution channel.

STANDARD BLACK EPDM MEMBRANE

- The most economical singly-ply membrane
- Ideal for ballasted and fully adhered systems

STANDARD REINFORCED EPDM MEMBRANE

- Reinforced with tough polyester fabric for superior fatigue, tear, and puncture resistance
- Ideal for mechanically attached systems

WHITE-ON-BLACK EPDM MEMBRANE

- Reflects the sunlight & cools the building interior leading to lower BTU usage and energy costs
- Fully adhered application is required
- Meets CA Title 24 and CRRC® rated

GRAY EPDM MEMBRANE

- Outstanding weatherability
- Offers reflectivity while still providing winter heat gains
- Allows the roof to dry faster than white membranes

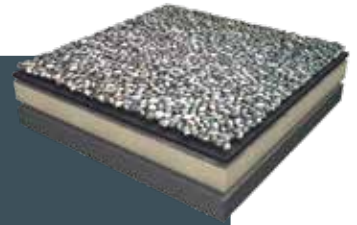
PRE-TAPED EPDM

- Ensures consistent placement of the tape to maximize the splice area by controlling the placement within +/- 1/8"
- Can improve seaming productivity by up to 75% to get from job to job fast and reduce labor
- Reduces materials to load on roof – plus less waste and disposal

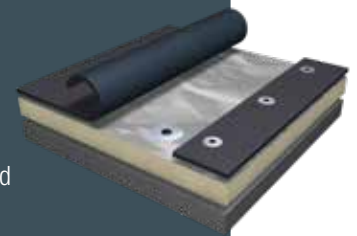
SELF-ADHERING EPDM

- Up to 80% productivity increase compared to traditional bonding adhesive
- 3" factory-applied In-Seam Tape and full line of Pressure-Sensitive accessories enhance workmanship quality
- Stays flexible even in very cold temperatures

EPDM
Ballasted



EPDM
Mechanically-Attached



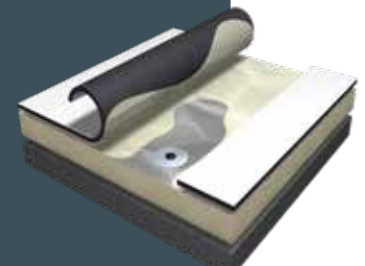
EPDM
Fully-Adhered with
Solvent-Based Adhesive



EPDM
Fully-Adhered
with Water Base
Bonding Adhesive



White on Black
EPDM
Fully-Adhered
with Water Base
Bonding Adhesive



MEMBRANE AVAILABILITY

MATERIAL	MATERIAL THICKNESS	STANDARD WIDTH	STANDARD LENGTH	AVAILABLE PRE-CLEANED	AVAILABLE WARRANTY
Standard Black EPDM Membrane	45-mil	7' - 50'	50'-100'		10, 15 yr
	60-mil	10' - 40'	50'-100'	Yes	10, 15, 20 yr
	90-mil	10'	50'-100'	Yes	10, 15, 20, 30 yr
Standard Black EPDM Membrane (Pre-Taped)	45-mil	10'	100'		10, 15 yr
	60-mil	10'	100'		10, 15, 20 yr
Standard Reinforced EPDM Membrane	45-mil	8' - 10'	100'	Yes	10, 15 yr
	60-mil	8' - 10'	100'	Yes	10, 15, 20 yr
Standard Reinforced EPDM Membrane (Pre-Taped)	45-mil	10'	100'		10, 15 yr
	60-mil	10'	100'		10, 15 yr
White-On-Black EPDM Membrane	45-mil	20'	100'		10, 15 yr
	60-mil	10'	50'-100'		10, 15, 20 yr
White-On-Black EPDM Membrane (Pre-Taped)	45-mil	20'	100'		10, 15 yr
	60-mil	10' - 20'	100'		10, 15, 20 yr
FR Reinforced EPDM Membrane	45-mil	8' - 10'	100'		10, 15 yr
	60-mil	8' - 10'	100'		10, 15 yr
Standard Black Self-Adhering EPDM	60-mil	5', 10'	40', 50', 100'		10, 15, 20 yr
Gray EPDM	60-mil	10'	50', 100'		10, 15, 20 yr

This chart is used for a general guideline. Additional sizes may be available. Please contact MuleHide Customer Service at 800-786-1492 or go to our website at www.mulehide.com for specific product information.



PRE-TAPED EPDM

FACTORY-CONTROLLED PRODUCTION ENSURES RELIABLE SEAMING WITH GREATER PEEL AND SHEAR STRENGTH AND NO ENTRAPPED AIR BUBBLES

Wide range of sizes

- Available in sizes to meet the needs of various project requirements
- 2-Pack (2 sheets per core) means quicker roof loading and reduced waste – also ideal when narrow width sheeting is needed
- Wide-width dusted sheeting for large, wide-open projects.
- Both 3" and 6" tape widths

FAQ'S

WHAT IS A SUITABLE SUBSTRATE FOR ACRYLIC WATER-BASE BONDING ADHESIVE APPLICATION?

Plywood, OSB, HD Wood Fiberboard, DensDeck® Prime or SECUROCK®.

WHAT IS IN-SEAM TAPE?

MuleHide In-Seam Tape is a cured, butyl based, two-sided adhesive tape that bonds on contact and is used to seam and eliminate applicator inconsistencies & voids. When applied properly (MuleHide Tape Primer must be used), it provides the fastest way to achieve strong, long lasting, watertight field seams.

WHAT IS CURED COVER TAPE?

MuleHide Cured Cover Tape is a length of EPDM, factory-SELECT-A-MEMBRANE GUIDE bonded to a cured butyl adhesive tape that is highly resistant to the most extreme weather and use situations. It is used to strip in gravel stops and drip aprons metal edging). When applied properly (MuleHide Tape Primer must be used), it provides a long lasting, high-performing seal. Cured Cover Tape is also used to strip in field seams, rows of seam plates or batten bars for membrane attachment.

WHAT ARE THE WARRANTY FEES FOR EPDM ROOFING SYSTEMS?

Fees vary depending on the type of warranty desired. Current Fees are listed on MuleHide Warranty Application forms which are available on the MuleHide website.

DOES MULEHIDE OFFER ANY PRE-JOB "WALK THE ROOF" OR JOB STARTS?

Yes, MuleHide Territory Managers offer these services.

WHAT IF I NEED TO PROVE MULEHIDE EPDM MEETS A WRITTEN SPECIFICATION OR COMPLIES WITH A UL, FM OR OTHER CODE REQUIREMENT?

Just provide MuleHide with the following information:

- A copy of the specification
- Name & address to whom the letter should be addressed
- Your phone & fax number
- What is the UL/FM requirement?
- Deck type?
- Parapet height?
- Overall dimensions?
- Building location and height?
- Membrane and system?
- Insulation type and thickness?
- Slope?



ACRYLIC WATER-BASE BONDING ADHESIVE

FULLY ADHERING EPDM WITH MULEHIDE ACRYLIC WATER-BASE BONDING ADHESIVE REQUIRES FEWER WORKERS. EASIER SHEET POSITIONING MEANS FEWER CALLBACKS

- Faster roofs
- Labor savings
- Crew retention
- Fully adhered
- Mechanically attached & ballasted (only for FA-EPDM)

EPDM ACCESSORIES



- Adhesives – Acrylic Water Base Bonding Adhesive (solvent based), Black Splice Adhesive, White Splice Adhesive
- Tapes & Tape Primer – seams are completed fast and easy with In-Seam Tape and Tape Primer
- Sealants & Caulks – Pourable Sealer, Lap Sealants (black & white), Water Cut-off Mastic
- Reinforced Membrane Strip – 6" RMS with Tape - reduces installation time since no Splice Adhesive is needed
- Flashings – Uncured Flashing Tape and Cured Cover Tape
- Pipe Boots & Pre-Fabricated Accessories – Premolded EPDM Pipe Boots with Tape for pipe flashings and penetrations – just prime, peel, stick and caulk the edges. Pre-cut Corners (inside/outside) can also be used for t-joint patches. Pourable Sealer Pockets - allow easy field fabrication versus metal. Walkway Pads
- Fastener Accessories – Drill Point (for insulation only) HDP & EHD Fasteners, Insulation Plates and Seam Plates
- All Purpose Bar – use as anchor, batten and termination bar
- Polyisocyanurate Insulation
- DensDeck®
- SUCUROCK®



Contact MuleHide for specific product approvals and ratings. Featured industry association/organization logos are U.S. registered trademarks. MuleHide is an AIA registered CES provider.

“The name trusted in roofing since 1906”

Customer Line: 800-786-1492 • www.mulehide.com



The information herein should not be considered all-inclusive and should always be accompanied by a review of the MuleHide specifications and guidelines and good application practices.

This information herein is based upon data and knowledge considered to be true and accurate at the time of printing and is provided for the reader's consideration, investigation and verification. No statement made by anyone may supersede this information, except when done in writing by Mule-Hide Products Co., Inc. ("MuleHide"). MuleHide does not warrant any results to be obtained. Statements concerning possible use of MuleHide products are made without knowledge of your particular roof and such an application may not be fit for your particular purpose. MULEHIDE DISCLAIMS ALL WARRANTIES, INCLUDING THE IMPLIED WARRANTY OF MERCHANTABILITY AND FITNESS FOR A PARTICULAR PURPOSE, except written warranties attached to MuleHide and written warranties signed by an officer of MuleHide.

Visit the MuleHide website at www.mulehide.com prior to any installation for updated technical specifications and details. MuleHide is a U.S. registered trademark. DensDeck is wholly owned registered trademark of Georgia-Pacific Gypsum LLC/Georgia-Pacific Wood Products LLC. SECUROCK is wholly owned registered trademark of USG Corporation. All rights reserved.