

EDGE METAL & ACCESSORIES

FOR SINGLE-PLY ROOFING SYSTEMS



"The name trusted in roofing since 1906"



OUR PROMISE

THROUGH ONGOING INTERCHANGE OF EXPERIENCES WITH CONTRACTORS, MULE-HIDE KEEPS ON TOP OF THE LATEST ROOFING REQUIREMENTS AND SOLUTIONS

Trusted in roofing since 1906, Mule-Hide is the right choice for all kinds of installations. Our time-tested and proven systems are affordable and easy to install, and they meet even the strictest demands of today's commercial, industrial, and institutional buildings.

We can help you with everything from membrane selection to determining the best way to ensure a watertight roof. And because providing total roofing systems is our business, you can count on Mule-Hide to ensure the compatibility and performance of the components we provide with each system.

WARRANTY PROGRAM

Mule-Hide offers a variety of warranties for Commercial and Residential projects including material and system warranties. System warranties are available for commercial projects when installed in strict compliance with Mule-Hide's specifications by a Mule-Hide Warranty Eligible Contractor. Residential projects may qualify for material warranties. Complete warranty information and requirements for the various warranties available may be found on the Mule-Hide web site at www.mulehide.com or by contacting Mule-Hide at 800-786-1492.

SYSTEM BENEFITS

SAVINGS

Mule-Hide edge metal and accessories reduce installation expenses and increase productivity. Our wide assortment of standard and custom-fabricated products are quick and easy to install, helping to reduce labor costs by eliminating on-site metal fabrication.

QUALITY

Completed products are carefully inspected, a protective film is applied, and then they are shipped to the job site, ready for installation.

ENDLESS OPTIONS

We stock 24-gauge Kynar® metal finishes listed on our color chart on the inside back cover of this catalog. In addition to these standard metals, we also have specialized metals including:

- .040 and .050 Aluminum Kynar® Finish
- .040 and .050 Aluminum Mill Finish
- 16 oz. Copper
- 24-gauge Stainless Steel
- 24-gauge Bonderized (paintable) Steel



FASCIA

1-3/4" AND 4" FASCIA COVER

- End-notched for trouble-free piece-to-piece docking
- Use with 1-3/4" and 4" vinyl fascia bar
- Pre-mitered inside and outside corners are ready to assemble
- 1-3/4" Fascia Cover FM Approved 1-990
- 4" Fascia Cover FM Approved 1-825
- EPDM, TPO and PVC available in Kynar® Colors
- Meets ANSI/SPRI ES-1 RE-2 testing requirements.

For 24 ga. steel cover: 1-3/4" Average Achieved Pressure (AAP) 1160 lb/ft²
4" AAP 990 lb/ft²

For .040 aluminum cover: 1-3/4" AAP 300 lb/ft²
4" AAP 300 lb/ft²



4" FLEX FASCIA COVER

- Pre-notched grooves allow fascia cover to easily snap over radial surfaces
- Can be installed on both inside and outside radius edges
- Use with 4" vinyl fascia bar
- Available in 10' lengths
- EPDM, TPO and PVC available in Kynar® Colors



2-PIECE SNAP-ON COMPRESSION

- Secures membrane while providing an aesthetically pleasing finish
- Pre-mitered inside and outside corners are ready to assemble
- Available in 10' lengths; 3" through 8" widths
- 4" 2-Piece Snap-On Compression FM Approved 1-360
- 6" 2-Piece Snap-On Compression FM Approved 1-135
- EPDM, TPO and PVC available in Kynar® Colors
- Meets ANSI/SPRI ES-1 RE-2 testing requirements

For 24 ga steel cover w/24 ga base: 3" AAP 543 lb/ft²
4" AAP 386 lb/ft²
5" AAP 346 lb/ft²
6" AAP 306 lb/ft²
7" AAP 263 lb/ft²
8" AAP 230 lb/ft²

For .040 aluminum cover w/24 ga base: 3" AAP 300 lb/ft²
4" AAP 300 lb/ft²
5" AAP 300 lb/ft²
6" AAP 300 lb/ft²
7" AAP 293 lb/ft²
8" AAP 263 lb/ft²



2-PIECE SNAP-ON COMPRESSION LG

- Installs the same as a 2-Piece Snap-On with pre-punched holes in the base
- Pre-mitered inside and outside corners are ready to assemble
- Available in 10' lengths; 9" through 13" widths
- Call for colors available on EPDM, TPO and PVC
- Meets ANSI/SPRI ES-1 RE-2 testing requirements

For .040 Aluminum cover w/22 ga base: 9" AAP 233 lb/ft²
10" AAP 140 lb/ft²
11" AAP 153 lb/ft²
12" AAP 158 lb/ft²
13" AAP 116 lb/ft²



FASCIA



ECLIPSEdge

- Easy fast install
- Cuts material and labor costs compared to conventional applications
- Eliminates the need for continuous clip when face dimension exceeds 4"
- Not sensitive to membrane thickness
- Eliminates need for fasteners and required flashing membrane on horizontal surfaces
- Can be installed with cordless drill
- Fastener holes are pre-punched to ease installation
- Pre-notched for easier overlapping during installation
- Overlap design eliminates joint covers
- Metalwork is automatically included in a Mule-Hide labor and material warranty
- Eliminates the need to measure and fabricate copings (Requires a return trip to complete the job)
- ES-1 compliant
- Lower installed cost solution for raised roof edge/gravel stop and coping caps

DRIP EDGE



DRIP EDGE

- Provides visually appealing termination
- Profiles can be custom fabricated to meet most specifications
- TPO available in white coated metal with 6" attached skirt or without skirt
- PVC available in white coated metal with 6" attached skirt
- Available in Kynar® colors for EPDM systems
- Available in 10' lengths; 2" through 6" widths
- Meets ANSI/SPRI ES-1 RE-2 testing requirements

*For galvanized membrane coated metal:
(4" - 8" tested with cleat)*

3" AAP 206 lb/ft²
4" AAP 316 lb/ft²
5" AAP 316 lb/ft²
6" AAP 316 lb/ft²
7" AAP 236 lb/ft²
8" AAP 236 lb/ft²

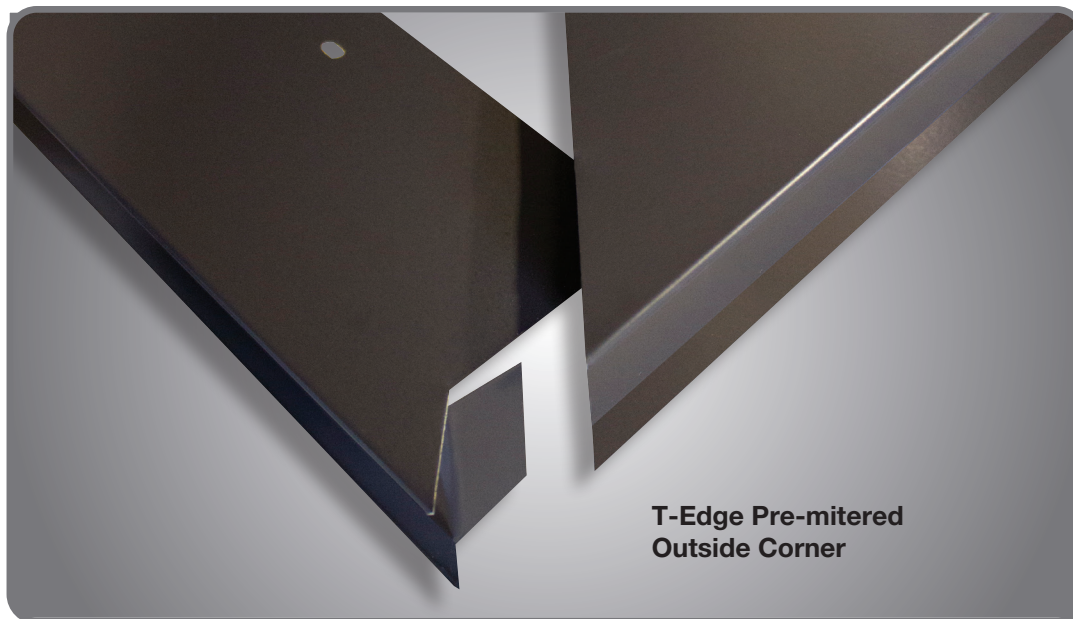
*For aluminum membrane coated drip edge:
(4" - 8" tested with cleat)*

3" AAP 300 lb/ft²
4" AAP 300 lb/ft²
5" AAP 300 lb/ft²
6" AAP 223 lb/ft²
7" AAP 180 lb/ft²
8" AAP 180 lb/ft²



GRAVEL STOP

- Provides a professional appearance while securing roofing membrane
- Available in 10' lengths, custom sizes 3" through 8" pre-mitered inside and outside corners are ready to assemble
- TPO available in white coated metal with 6" attached skirt or without skirt
- PVC available in white coated metal with 6" attached skirt
- Available in Kynar® colors for EPDM systems



**T-Edge Pre-mitered
Outside Corner**

T-EDGE

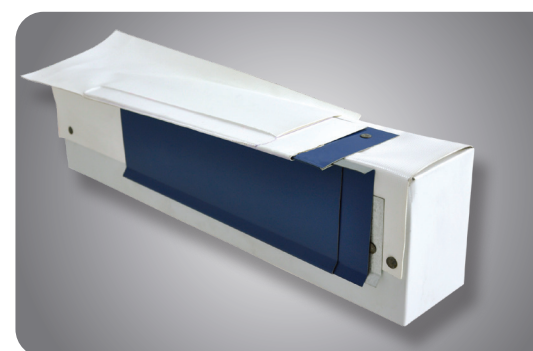
- Combines the functionality of the drip edge and the professional finish of fascia covers
- Consists of splice plate, Kynar® finish T-Edge metal base and hook strip
- TPO and PVC hook strips come with an attached 6" skirt that connects the extended eave of the T-Edge
- TPO available in white coated metal with or without skirt
- PVC available in white coated metal and skirt
- Pre-mitered inside and outside corners are ready to assemble
- Available in 10' lengths; 2" through 8" widths
- Meets ANSI/SPRI ES-1 RE-2 testing requirements

*For 24 ga steel:
(4" - 8" tested with cleat)*

3" AAP 186 lb/ft²
4" AAP 230 lb/ft²
5" AAP 230 lb/ft²
6" AAP 230 lb/ft²
7" AAP 145 lb/ft²
8" AAP 145 lb/ft²

*For .040 aluminum:
(4" - 8" tested with cleat)*

3" AAP 300 lb/ft²
4" AAP 156 lb/ft²
5" AAP 156 lb/ft²
6" AAP 156 lb/ft²
7" AAP 91 lb/ft²
8" AAP 91 lb/ft²



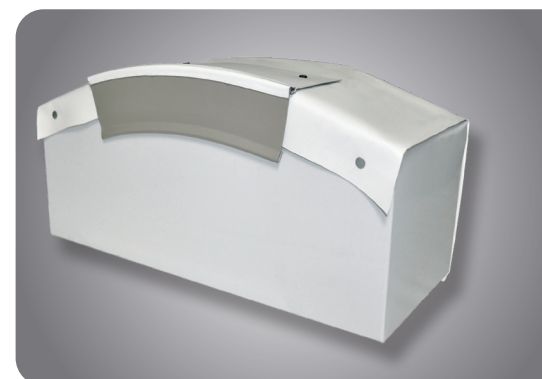
T-EDGE PLUS

- Combines the functionality of the drip edge and the professional finish of fascia covers
- Double-folded drip edge neatly conceals the hook strip
- Consists of splice plate, Kynar® finish T-Edge metal base and hook strip available in 23 colors
- TPO and PVC coated hook strip comes with an attached 6" skirt that connects the extended eave of the T-Edge
- TPO available in white coated metal with or without skirt
- PVC available in white coated metal and skirt
- Pre-mitered inside and outside corners are ready to assemble
- Available in 10' lengths; 2" through 8" widths
- Meets ANSI/SPRI ES-1 RE-2 testing requirements

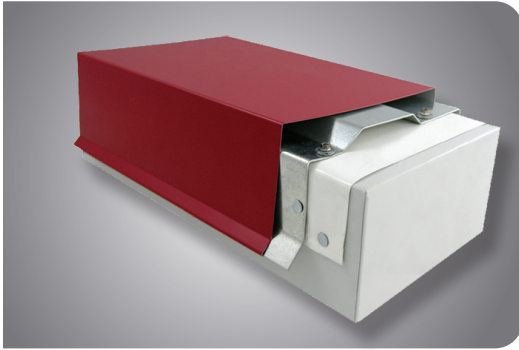


ARCHED DRIP EDGE

- Provides a smooth finish that is an aesthetically pleasing alternative to traditional piecing
- Available in 5' through 10' lengths; 3" through 8" widths depending on building's arch specifications
- PVC coated roof flange enables welding a separate skirt to both the flange and the installed roof membrane to provide watertight seal
- Available in Kynar® colors for EPDM and TPO systems
- PVC available in white coated metal



COPINGS

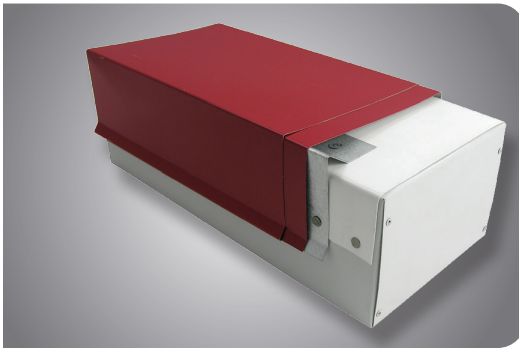


SNAP COPING

- Provides complete finish on parapet walls
- 6" concealed plate provides coverage for expansion and contraction
- No exposed fasteners
- Pre-fabricated inside and outside corners are available
- Available in 10' lengths; widths are customized to specifications (4" x 8" x 3" minimum)
- Available in Kynar® Colors
- Max. face of 6" and 16" meets ANSI/SPRI ES-1 RE-3 testing requirements

For 24 ga. steel cover: 8" AAP 196 lb/ft²
12" AAP 100 lb/ft²
16" AAP 108 lb/ft²

For .040 aluminum: 8" AAP 160 lb/ft²
12" AAP 108 lb/ft²
16" AAP 75 lb/ft²

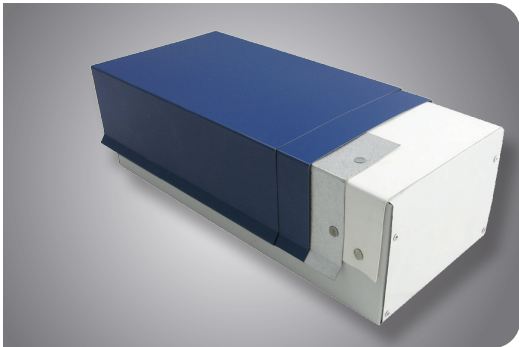


CANTED COPING

- Ideal for parapet walls requiring water to drain toward the roof side
- Gives the same appearance of the snap coping
- Pre-fabricated inside and outside corners are available
- 6" concealed plate provides coverage for expansion and contraction
- Available in 10' lengths; widths are customized for specifications
- Available in Kynar® Colors
- Max. face of 6" and 16" meets ANSI/SPRI ES-1 RE-3 testing requirements

For 24 ga. steel cover: 8" AAP 300 lb/ft²
12" AAP 280 lb/ft²
16" AAP 270 lb/ft²

For .040 aluminum: 8" AAP 300 lb/ft²
12" AAP 296 lb/ft²
16" AAP 233 lb/ft²

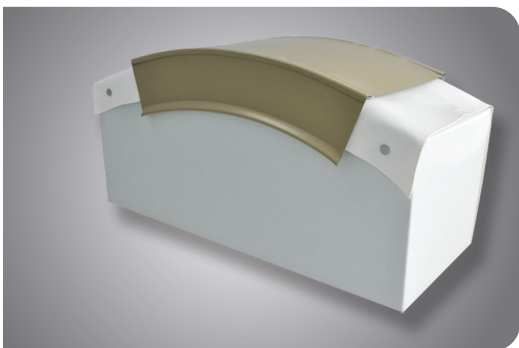


FLAT COPING

- Provides complete finish to parapet walls
- Installed using a continuous face cleat
- Pre-fabricated inside and outside corners are available
- 6" concealed plate provides coverage for expansion and contraction
- Available in 10' lengths; widths are customized for specifications
- Available in Kynar® Colors
- Max. face of 6" and 16" meets ANSI/SPRI ES-1 RE-3 testing requirements

For 24 ga steel cover: 8" AAP 280 lb/ft²
12" AAP 263 lb/ft²
16" AAP 190 lb/ft²

For .040 aluminum: 8" AAP 300 lb/ft²
12" AAP 223 lb/ft²
16" AAP 226 lb/ft²



ARCHED COPING

- Provides a smooth finish that is an aesthetically pleasing alternative to traditional piecing
- Pre-notched lap joints provide proper water shed
- Available in 5' through 10' lengths depending on building's arch specifications
- Available in Kynar® Colors

REGLETS & COUNTERFLASHING

- Provides extended watertight protection along wall termination
- Shields fasteners from elements, preventing oxidation
- Custom-fabricated to specific projects
- Available in 10' lengths



EDGE EXTENDER

- Used to extend perimeter edge widths
- Can be used with all edge details including gutter and coping
- Available in 10' lengths; 3" through 8" widths
- Available in Kynar® colors



SCUPPER

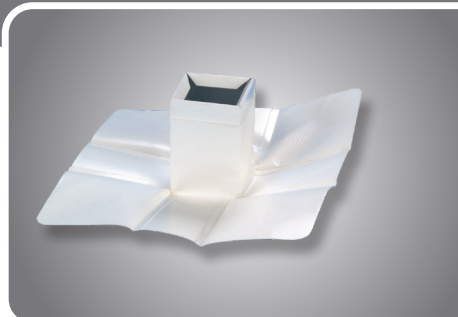
- Offer watertight through-wall drainage
- Assembled with 24-gauge PVC coated metal only with a 6" skirt
- Available in white PVC coated metal only



PITCH PAN

PITCH PAN

- Prefabricated pitch pans deliver a watertight seal around rooftop protrusions
- Available in custom height and length and width
- PVC available in white coated metal with 6" attached skirt
- Available in Kynar® colors for EPDM systems without skirt

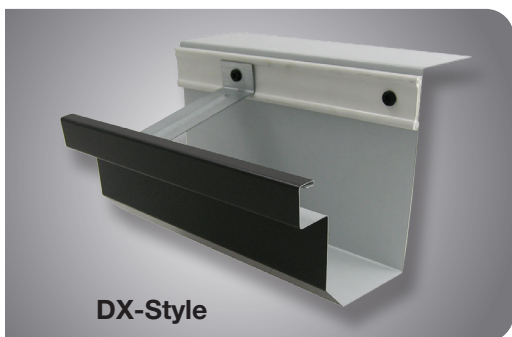


CONDUCTOR HEAD



- Conductor complement the roof design and direct rain water into downspouts.
- Available in Kynar® colors

GUTTERS & ACCESSORIES



DX-Style

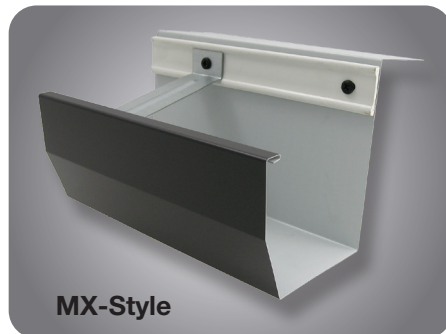
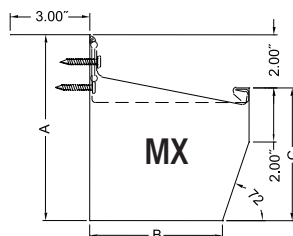
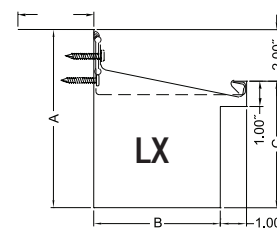
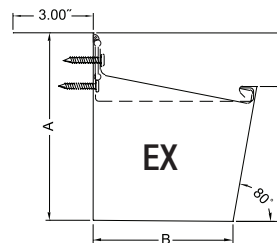
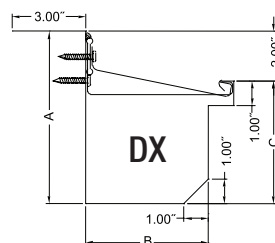


EX-Style



LX-Style

- Available in four standard profiles and three different sizes
- Gutters can be customized to meet specifications
- Inside and outside miters can be fabricated to any angle and ready to assemble
- Internal splice plates reduce installation time
- Available in Kynar® colors



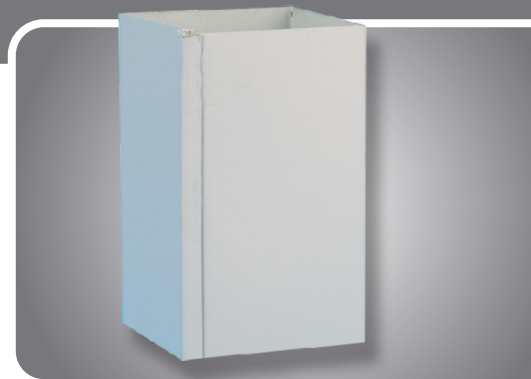
MX-Style

DX-Style	A	B	C
DX-4	6"	4"	4"
DX-5	7"	5"	5"
DX-6	7"	6"	5"
EX-Style	A	B	C
EX-4	6"	4"	4"
EX-5	7"	5"	5"
EX-6	7"	6"	5"
LX-Style	A	B	C
LX-4	6"	4"	4"
LX-5	7"	5"	5"
LX-6	7"	6"	5"
MX-Style	A	B	C
MX-4	6"	4"	4"
MX-5	7"	5"	5"
MX-6	7"	6"	5"

DOWNSPOUTS & ACCESSORIES

CLOSED DOWNSPOUT

- Feature Pittsburgh seams
- Available in Kynar® colors



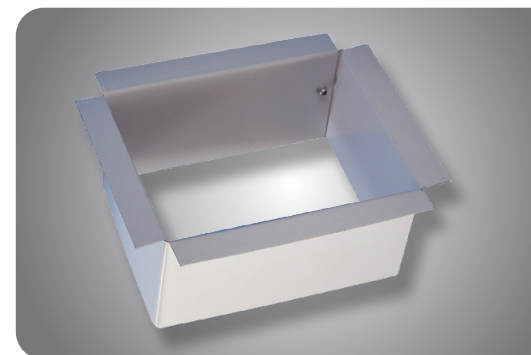
OPEN-FACE DOWNSPOUT

- Eliminate debris and ice blockage
- Available in Kynar® colors



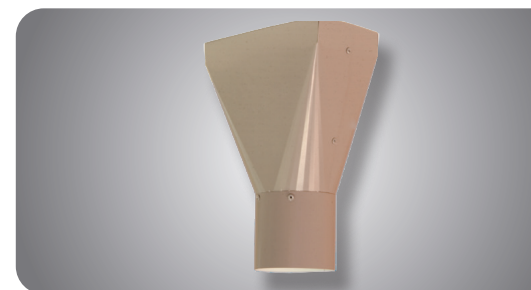
DROP/OUTLET

- Securely attaches gutters to downspouts
- Can be custom ordered to meet gutter dimensions



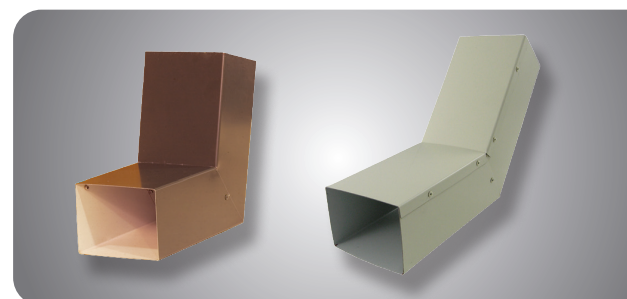
SQUARE TO ROUND DRAIN ADAPTOR

- Transitions square downspouts to ground drains or downspouts



ELBOWS

- Available in 45° and 80° angles
- A-Style directs water away from building
- B-Style directs water alongside the building



COLOR SELECTION CHART

Standard Colors



Snow White
24 ga / .040 alum
.050 alum



Bone White
24 ga / .040 alum
.050 alum



Almond
24 ga



Light Stone
24 ga



Brownstone
24 ga / .040 alum
.050 alum



Medium Bronze
24 ga / .040 alum
.050 alum



Koko Brown
24 ga / .040 alum
.050 alum



Midnight Bronze
24 ga / .040 alum
.050 alum



Tundra
24 ga



Slate Gray
24 ga / .040 alum
.050 alum



Hawaiian Blue
24 ga



Harbor Blue
24 ga



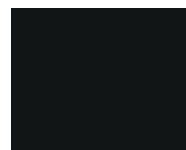
Natural Patina
24 ga



Classic Green
24 ga



Hunter Green
24 ga



Coal Black
24 ga / .040 alum
.050 alum



Charcoal Gray
24 ga



Colonial Red
24 ga



Brite Red
24 ga



Terra Cotta
24 ga



Galvalume Plus
24 ga

Metallic Colors



Silver Metallic
24 ga / .040 alum
.050 alum



Copper Metallic
24 ga

Colors shown are matched as accurately as possible, but may vary slightly from finished product.

NOTES

This image shows a full page of blank, lined paper. It features approximately 20 evenly spaced horizontal gray lines across the entire width of the page, typical of notebook or legal stationery. There are no margins, text, or other markings present.

WHY MULE-HIDE?

WE HELP YOU GROW YOUR BUSINESS

When you choose Mule-Hide roofing materials for a project, you get more than just the best products from a company that's been helping contractors for over a century. We offer individualized service designed to help you get the job done right the first time – so you can get on to the next job, and get that one done right as well. Mule-Hide products are available through the nation's largest distribution channel, and we truly care about your success.

OUR METAL PRODUCTS ARE ENVIRONMENTALLY FRIENDLY

Our products contain recycled materials and are also recyclable at the end of their useful life.



Contact Mule-Hide Products for specific product approvals and ratings.
Featured industry association/organization logos are U.S. registered trademarks.
Mule-Hide is an AIA registered CES provider.

“The name trusted in roofing since 1906”

Customer Line: 800-786-1492 • www.mulehide.com

Check our website monthly for the latest updates & technical bulletins.

National Support Center • 1195 Prince Hall Drive • Beloit, WI 53511 • tel. 608.365.3111 • fax. 608.365.7852



The information herein should not be considered all-inclusive and should always be accompanied by a review of the Mule-Hide specifications and guidelines and good application practices.

This information herein is based upon data and knowledge considered to be true and accurate at the time of printing and is provided for the reader's consideration, investigation and verification. No statement made by anyone may supersede this information, except when done in writing by Mule-Hide Products Co., Inc. Mule-Hide Products Co., Inc. does not warrant any results to be obtained. Statements concerning possible use of Mule-Hide products are made without knowledge of your particular roof and such an application may not be fit for your particular purpose. MULE-HIDE DISCLAIMS ALL WARRANTIES, INCLUDING THE IMPLIED WARRANTY OF MERCHANTABILITY AND FITNESS FOR A PARTICULAR PURPOSE, except written warranties attached to Mule-Hide products and written warranties signed by an officer of Mule-Hide.

Visit the Mule-Hide website at www.mulehide.com prior to any installation for updated technical specifications and details.
Mule-Hide is a U.S. registered trademark. Kynar is wholly owned registered trademark of Arkema Inc. All rights reserved.