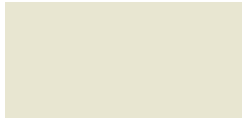




Edge Metal Color Chart

Express Colors*



Almond



Bone White



Cityscape



Clear Anodized



Dark Bronze



Medium Bronze



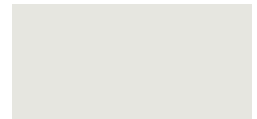
Sandstone



Sierra Tan



Slate Gray



Stone White

Standard Colors



Black ▲



Burnished Slate



Cardinal Red



Charcoal



Classic Bronze



Colonial Red



Forest Green



Granite



Graphite



Hemlock Green



Inkwell



Interstate Blue



Iron Ore



Mansard Brown



Midnight Bronze



Musket Gray



Onyx ▲



Pacific Blue



Patina Green ▲



Terra Cotta

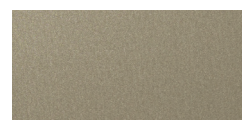
Premium Colors



Anodic Clear



Award Blue



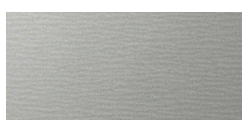
Champagne



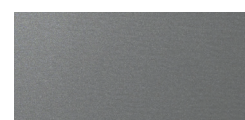
Copper Penny



Silver



Silversmith



Weathered Zinc

Our colors are deep, rich and true. Made of Valspar's Fluorpon® High Performance Hylar 5000®/Kynar 500® finish, they offer the ultimate in resistance against fading and weathering. Custom colors also available.

* = Also in Mill Finish
▲ = Must Specify Supplier

Quick Reference Guide

HYLAR 50000® / KYNAR 500®	24 ga.	22 ga.	.040"	.050"	.063"
Almond	•	•	•	•	
Black ▲	•	•	•	•	•
Bone White ■	•	•	•	•	•
Buenished Slate	•				
Cardinal Red	•				
Charcoal	•	•	•	•	
Cityscape ■	•	•	•	•	
Classic Bronze	•				
Colonial Red	•		•	•	
Dark Bronze ■	•	•	•	•	•
Forest Green	•		•		
Granite	•	•	•	•	
Hemlock Green	•				
Inkwell	•				
Interstate Blue	•	•		•	
Iron Ore	•		•	•	
Mansard Brown ■	•	•	•	•	
Medium Bronze	•	•	•	•	•
Midnight Bronze	•		•		
Musket Gray	•	•		•	
Onyx ▲	•	•	•	•	
Pacific Blue	•				
Patina Green ▲	•		•		
Sandstone ■	•	•	•	•	•
Sierra Tan ■	•	•	•	•	
Slate Gray ■	•	•	•	•	
Stone White	•	•	•	•	•
Terra Cotta	•			•	
PREMIUM					
Anodic Clear			•	•	•
Award Blue	•			•	
Champagne	•	•	•	•	
Copper Penny	•		•	•	
Silver	•	•	•	•	
Silversmith			•		
Weathered Zinc	•	•		•	
COIL ANODIZED					
Clear Anodized ■			•	•	•
OTHER					
Mill Finish (3003-H14)	.040, .050, .063, .080, .100, .125				
110 Copper	16 oz. & 20 oz.				
304 - 2B Stainless Steel	20 ga., 22 ga. & 24 ga.				
Galvanized Steel	16 ga., 20 ga., 22 ga. & 24 ga.				
Galvalume Plus	22 ga., 24 ga.				
Galvannealed (Paintable)	24 ga.				

Please Note

Express colors available in shorter lead times for 24 ga., .040" and .050" only. Standard lead times, which may be longer, apply for 22 ga. and .063".

Protective film must be removed immediately. Please note this chart is only a representation of color options. Color matches should only be made with actual samples. Please call or write for actual metal sample(s).

These color reproductions are as accurate as modern printing technology will permit and may vary slightly from actual colors supplied. Finished color chip samples are available upon request. Customer is responsible for color selections chosen from printed literature.

MuleHide receives metal through multiple vendors. If a specific metal vendor is required for a project, please specify this at the time of order.

Kynar 500® based fluropolymer coating is a high-grade architectural finish offering excellent resistance to degradation caused by nature's elements and airborne contaminants.

Kynar 500® is a registered trademark of Arkema, Inc. Valspar® is a registered trademark of Valspar Sourcing, Inc..

Standard anodized finishes that utilize a continuous coil anodizing process to provide excellent color consistency from piece to piece are available.

However, shade variations may occur from coil batch to coil batch. Class I batch anodizing is also available.

Due to product improvements and changes, we reserve the right to change or delete information herein without prior notice.

The information herein should not be considered all-inclusive and should always be accompanied by a review of the MuleHide specifications and guidelines and good application practices.

This information herein is based upon data and knowledge considered to be true and accurate at the time of printing and is provided for the reader's consideration, investigation and verification. No statement made by anyone may supersede this information, except when done in writing by Mule-Hide Products Co., Inc. ("MuleHide"). MuleHide does not warrant any results to be obtained. Statements concerning possible use of MuleHide products are made without knowledge of your particular roof and such an application may not be fit for your particular purpose. MULEHIDE DISCLAIMS ALL WARRANTIES, INCLUDING THE IMPLIED WARRANTY OF MERCHANTABILITY AND FITNESS FOR A PARTICULAR PURPOSE, except written warranties attached to MuleHide products and written warranties signed by an officer of MuleHide.

Visit the MuleHide website at www.mulehide.com prior to any installation for updated technical specifications and details. MuleHide is a U.S. registered trademark. All rights reserved.

Also available: Stucco Embossed Sheets

▲ = Must specify supplier. Contact MuleHide for specific color information.

■ = Express colors.



"The name trusted in roofing since 1906"

Customer Line: 800-786-1492
www.mulehide.com

©2026 MuleHide • Printed in USA • Rev. 2 4/26