

Five Reasons to Choose

An EPDM Roofing System



The Right Choice for Low-Slope Roofing Products

800-786-1492 • mulehide.com

Rugged • Time Tested • Weather Tested

EPDM roofing systems are time-tested, proven performers.

Over the last 50 years, they have been installed on virtually every type of building in all corners of the globe, establishing a track record of long-term, watertight, hassle-free performance; quick, easy installation; and cost effectiveness.

1. Versatility

EPDM systems are at home in virtually any low-slope roofing application.

- **New Construction, Reroof or Retrofit:** EPDM membranes are lightweight and don't add excessive weight to the roof deck.
- **Multiple Attachment Methods:** From fully adhered, to mechanically attached and ballasted
- **Options for Any Project:** a range of sheet sizes, lengths and thicknesses.

2. Proven Performance

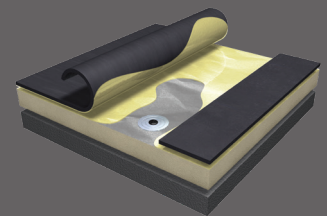
EPDM roofing systems deliver years of hassle-free, watertight performance under even the harshest conditions.

- Weatherability
- Hail Resistance
- High Tensile Strength
- Flexible in hot and cold temperatures

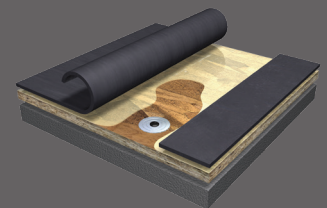
3. Quick, Easy Installation

Fast, easy installation reduces labor costs and allows crews to get from job to job faster.

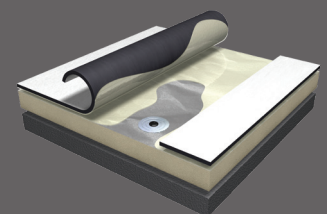
- Installed without the need for special tools or complicated equipment.
- Options like pre-taped membranes and pressure-sensitive accessories increase installation speed and help ensure consistent seam placement.
- Self-adhered membranes eliminate the time, hassle and mess of applying adhesive.



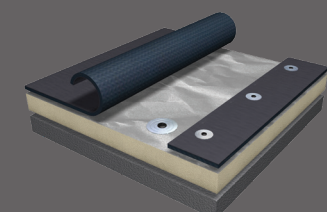
Fully Adhered with Solvent Based Adhesive



Fully Adhered with Water Based Bonding Adhesive



White on Black EPDM Fully Adhered with Water Based Bonding Adhesive



Mechanically Attached

Five Reasons to Choose

An EPDM Roofing System

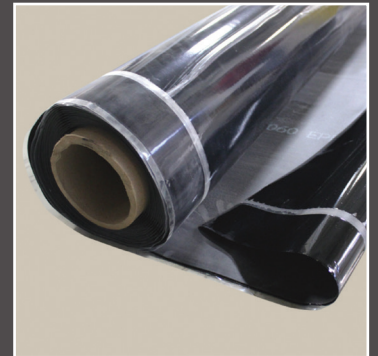
4. Energy Efficiency

Regardless of a building's location, an EPDM roofing system can reduce heating and cooling costs and help keep building occupants comfortable.

- Black membranes are an appropriate choice in northern climates. They absorb solar energy, keeping the building interior warmer during the winter.
- White-on-Black membranes are an ideal option in warm southern climates. They reflect the sun's rays, keeping the building's interior cooler and maximizing the efficiency of rooftop air-conditioning equipment.
- Gray membranes are the ideal solution for climates with a balanced mix of heating and cooling days, delivering year-round performance where black or white membranes fall short for half the year.

5. Warranty Options

MuleHide offers a variety of warranty options, including materials-only warranties and No Dollar Limit system warranties that cover labor and materials. Warranties of 10, 15, 20 and 30 years are available.



Self-Adhering EPDM



White-on-Black EPDM



The information herein should not be considered all-inclusive and should always be accompanied by a review of the MuleHide specifications and guidelines and good application practices.

This information herein is based upon data and knowledge considered to be true and accurate at the time of printing and is provided for the reader's consideration, investigation and verification. No statement made by anyone may supersede this information, except when done in writing by Mule-Hide Products Co., Inc. ("MuleHide"). MuleHide does not warrant any results to be obtained. Statements concerning possible use of MuleHide products are made without knowledge of your particular roof and such an application may not be fit for your particular purpose. MULEHIDE DISCLAIMS ALL WARRANTIES, INCLUDING THE IMPLIED WARRANTY OF MERCHANTABILITY AND FITNESS FOR A PARTICULAR PURPOSE, except written warranties attached to MuleHide products and written warranties signed by an officer of MuleHide.

Visit the MuleHide website at www.mulehide.com prior to any installation for updated technical specifications and details. MuleHide is a U.S. registered trademark. All rights reserved. REV 2 5/26