



"The name trusted in roofing since 1906"

MAINTENANCE & REPAIR GUIDE

ROOFING PRODUCTS & SYSTEMS

Product Spotlight



Repair Hero is a solvent-based, fiber-reinforced terpolymer sealant intended for the repair of asphalt, modified bitumen, metal, Kynar®, concrete, TPO, PVC, Elvaloy®/PVC, Hypalon® (CSPE), PIB and EPDM roofs.

Ideal maintenance and repair product for all roofs in all weather

- Extremely strong and elastic with high elongation and tensile strength to enhance performance under conditions that may cause asphalt-based cements to fail
- Can be applied to wet/dry surfaces and installed underwater
- VOC compliant in all states including California

Features and Benefits

- Ideal maintenance and repair product
- Universal adhesion to all roof substrates
- True all-weather repair product
- Wet, dry and underwater repairs
- Excellent adhesion and elongation
- Strong tensile strength
- Non-yellowing – UV stable
- Superior weathering
- No stirring required
- **Will not freeze**
- **Cures in 24-48 hours**
- **Shelf life of 2 years**



Preparation for installing product:

Repair Hero
To use: open pail, use,
close lid and repeat.



Competitor
To use: remove skin, stir for 5
minutes with specialty mixer,
apply and repeat.

See page 18

SEAL-FAST® LiquiFlash

Polyurethane Roofing Sealant

Liqui-Flash is a one-component, non-shrink, advanced technology polyurethane sealant designed for filling and sealing pitch pockets and pans, metal roof seams and fasteners, inlaid gutters, polyurethane foam, aged smooth asphalt and modified bitumen, aged PVC and EPDM roofs. Compatible with MuleHide acrylic and silicone roof coatings.

Seal complex details quickly and permanently

- Can be used to seal and flash unusually shaped penetrations
- Ideal for repairing hail damaged polyurethane foam roofs
- Viscous enough to avoid running and drain out issues encountered with more liquid sealers

Features and Benefits

- Ideal maintenance and repair product
- No fabric reinforcement required
- Reduced labor
- One-step application
- Easy to apply and brush
- Excellent elongation and strong tensile strength
- Non-yellowing – UV stable
- Excellent adhesion to a wide variety of substrates
- 100% solids
- No stirring required
- Shelf life of 2 years



See page 18



TABLE OF CONTENTS



Product Spotlight	2-3
EPDM Accessories	5-7
TPO Accessories	8-10
PVC Accessories	11
Coatings	12
Asphalt Cements & Coatings	13-15
Caulks & Sealants	16-17
Seal-Fast Tapes & Accessories ..	18-19

EPDM ACCESSORIES



MATE-LINE TAPE

Specifically developed for use with EPDM single-ply membrane roofing systems. May be used in conjunction with the MuleHide Tape Primer to strip gravel stops, drip aprons, seams or batten bars, and can be used to make repairs.

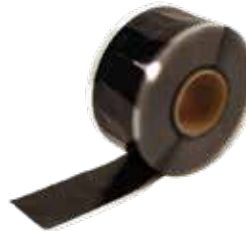
Requires the use of Tape Primer or Low-VOC Tape Primer.

EPDM

TPO

NO WELD PRODUCT

Product Code	Description	Carton	Weight	Shelf Life
08MHMLB091	9" x 100' Black	2 per	34 lbs.	1 year
08MHMLB126	12" x 65' Black	1 per	30 lbs.	
08MHMLB121	12" x 100' Black		47 lbs.	



EPDM IN-SEAM TAPE

A black or white, butyl rubber-based adhesive in tape form. Formulated to provide high green strength in both shear and peel. May be used on ballasted, mechanically attached and fully adhered EPDM roofing systems.

Requires the use of Tape Primer or Low-VOC Tape Primer.

EPDM

M&R

Product Code	Description	Carton	Shelf Life
08MHINSMT2	Black 3" x 25'	12 per	1 year



CURED COVER TAPE

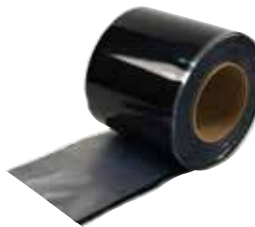
A nominal 60-mil, cured EPDM membrane strip laminated to nominal 30-mil cured butyl rubber tape and rolled onto a release liner, for a total nominal thickness of 90-mil. Commonly used to strip in metal edging.

Requires the use of Tape Primer or Low-VOC Tape Primer.

EPDM

M&R

Product Code	Description	Carton	Weight	Shelf Life
08MHLAT625	6" x 25' Black	4 per	25 lbs.	1 year
08MHLAT62W	6" x 25' White			



UNCURED FLASHING TAPE

May be used in conjunction with the MuleHide Tape Primer to flash inside and outside corners, pipes, pitch pockets or other penetrations that require the flashing to be molded or conform to an irregular shape. Not permitted for use in flashing gravel stops, drip aprons or stripping seams or batten bars.

Requires the use of Tape Primer or Low-VOC Tape Primer.

EPDM

M&R

Product Code	Description	Carton	Weight	Shelf Life
08MHUT062B	6" X 25' Black	8 per	38 lbs.	6-9 months

EPDM ACCESSORIES



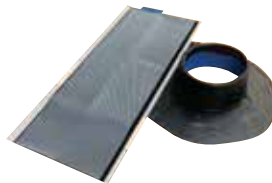
PRE-CUT INSIDE/OUTSIDE CORNERS

Ideal for installing inside and outside corners. Consists of .060 inch (1.5 mm) thick uncured EPDM flashing material laminated to cured butyl rubber tape and rolled onto a poly release liner providing .090-mils (2.25 mm) of total thickness.

EPDM M&R

Requires the use of Tape Primer or Low-VOC Tape Primer.

Product Code	Description	Carton	Weight	Shelf Life
08MHPCC20	7" x 9", Black	20 per	5 lbs.	9 months
08MHCPSWH2	7" x 9", White		8 lbs.	
08MHCPSG2	7" x 9", Gray		8 lbs.	



POURABLE SEALER POCKETS

Ideal for sealing irregular, hard to flash penetrations through the membrane. Prefabricated pockets consisting of a 2" (50 mm) wide plastic support strip with attached Uncured EPDM Flashing Tape.

Requires the use of Tape Primer or Low-VOC Tape Primer.

EPDM M&R

Product Code	Description	Carton	Weight	Shelf Life
08MHPSP4	4" Black	12 per	4 lbs.	9 months
08MHPSP6WH	6" White		6 lbs.	
08MHPSP6G	6" Gray		5 lbs.	



PREMOLDED EPDM PIPE BOOTS

Accommodates single pipe sizes from 1" to 6" in diameter. Conical-shaped steps securely seal all single-pipe penetrations. The large, double-thick, molded rib at the top of each step offers superior tear-resistance and reinforcement, as well as a cutting guide.

Requires the use of Tape Primer or Low-VOC Tape Primer.

EPDM M&R

Product Code	Description	Carton	Size	Weight	Shelf Life
08MHPBTB6T	Black with clamps and tape rings	10 per	1"- 6"	8 lbs.	1 year
08MHPBTW6T	White with clamps and tape rings			10 lbs.	
08MHPBTG6T	Gray with clamps and tape rings			10 lbs.	



WATER CUT-OFF MASTIC

Used to seal roofing membranes to stop water penetration into the roofing system. Common uses are at drain terminations and behind MuleHide All Purpose Bars at wall terminations.

LOW-VOC WATER CUT-OFF MASTIC

EPDM TPO PVC M&R

Product Code	Description	Weight	Coverage	Shelf Life
08MHWTRC	11-oz Tube	27 lbs.	10 Ln.ft. with 1/2" bead	1 year
08MHLWTRC	(25 per carton)			



EPDM BLACK LAP SEALANT

Required for sealing EPDM seams and flashings against the effects of weathering when seamed with Splice Adhesive or All Purpose Single Seal Adhesive. Refer to the MuleHide EPDM Manual for appropriate use of Lap Sealant when seams and flashings are completed with MuleHide tape products.

EPDM M&R

Product Code	Description	Carton	Coverage	Shelf Life
08MHLPCB	11-oz Tube	25 per	22 Ln.ft. with 5/16" bead	1 year



BLACK ONE-PART POURABLE SEALER

Designed for use with EPDM Pourable Sealant Pockets. The sealant's one-part, pourable consistency allows for quick pocket filling without mixing.

EPDM M&R

Product Code	Description	Weight	Coverage	Shelf Life
08MHPSPBK	1/2-Gallon Pouches (4 per carton)	26 lbs.	200 cu.in.	1.5 years



UNIVERSAL SINGLE-PLY SEALANT

A 100% solids, solvent free, one-part, polyether sealant that provides a weather-tight seal to a variety of building substrates. Provides excellent adhesion to substrates such as stone, masonry, ceramic, marble, wood, steel, aluminum, most plastics and composites. Not recommended as a glass-glazing sealant.



Product Code	Description	Weight	Coverage	Shelf Life
08MHUSPSWH	10.1-oz Tube (24 per carton)	24 lbs.	25 Ln.ft. with 1/4" bead	1 year



TAPE PRIMER

A solvent-based product designed for one-step cleaning and priming of EPDM surfaces to be bonded with In-Seam Tapes, Uncured Flashing Tapes, Cured Cover Tapes and Pre-Taped membranes.



Product Code	Description	Carton	Coverage	Shelf Life
08MHTAPR1	1-Gallon Pail	6 per	250 sq. ft. per gallon	9 months
08MHTAPRQ	1-Quart Can	8 per		



LOW-VOC PRIMER

A low-VOC product designed for one-step cleaning and priming of EPDM and TPO surfaces prior to the application of In-Seam Tapes and other taped products. Specially formulated using a blend of VOC exempt and non-exempt solvents to meet the < 250 g/L VOC content requirements of the OTC Model Rule for adhesives and sealants.



Product Code	Description	Carton	Coverage	Shelf Life
08MHEPLV1	1-Gallon Pail	6 per	250 sq. ft. per gallon	9 months
08MHEPLVQ	1-Quart Can	8 per		



LOW-VOC BONDING ADHESIVE

A high strength solvent-based contact adhesive that allows bonding of EPDM and TPO to various porous and non-porous substrates. Specially formulated using a blend of VOC exempt and non-exempt solvents to meet the < 250 g/L VOC content requirements of the OTC Model Rule for adhesives and sealants.



Product Code	Description	Coverage	Shelf Life
08MHETBLV1	1-Gallon Pail (6/ctn)	60 sq.ft. per gallon	1 year

TPO ACCESSORIES



TPO PIPE SEALS

Designed as an economical flashing for single-pipe penetrations on MuleHide TPO Membrane roof systems. TPO Pipe Seals can be used wherever the TPO Pipe Seals may be slipped over the top of the pipe.



Product Code	Description	Size	Carton	Weight
08MHTP348W	White	3/4" to 8" OD	8 per	8 lbs.



T-JOINT COVER

Used to seal step-offs at splice intersections. Installation is mandatory on all 60-mil and 80-mil TPO systems and on 45-mil systems where step-offs have not been properly sealed.



Product Code	Description	Size	Carton	Weight
08MHTJPWH	White	4.5" circle	100 per	3 lbs.



MOLDED SEALANT POCKETS

Interlocking, two-piece prefabricated pockets of non-reinforced TPO material used to seal pipe clusters or other irregular shaped penetrations. Pockets length can be adjusted from 7-1/2" to 11-1/2" by following the pre-molded cutting lines.



Product Code	Description	Size	Carton	Weight
08MHTMSAPW	White	7-1/2" to 11-1/2"	5 per	4 lbs.



TPO INSIDE & OUTSIDE CORNERS

Uniform in shape and size and provides water tightness at inside or outside corners formed by TPO coated metal and/or TPO flashing membrane. Provides a neat, finished look to building corners, curbs and parapet flashings with no cutting required.



Product Code	Description	Carton	Weight
08MHTICGY	Inside Corner - Gray	12 per	1 lbs.
08MHTICTN	Inside Corner - Tan	12 per	1 lbs.
08MHTICWH	Inside Corner - White	12 per	1 lbs.
08MHTOCGY	Outside Corner - Gray	12 per	1 lbs.
08MHTOCTN	Outside Corner - Tan	12 per	1 lbs.
08MHTOCWH	Outside Corner - White	12 per	1 lbs.



THERMOPLASTIC ONE-PART POURABLE SEALER (WHITE)

Designed for use with TPO, PVC & EPDM Pourable Sealer Pockets. The sealant's one-part, pourable consistency allows for quick pocket filling without mixing.

EPDM

TPO

PVC

M&R

NO WELD PRODUCT

Product Code	Description	Weight	Coverage	Shelf Life
08MHTPSWHE	1/2-Gallon Pouches (4 per carton)	29 lbs.	122 cu.in.	1 year



TPO PRIMER

A solvent-based product designed for one-step cleaning and priming of TPO surfaces to be bonded with In-Seam Tapes, Uncured Flashing Tapes, Cured Cover Tapes, and Pre-Taped membranes. It is specially formulated using a blend of VOC exempt and non-exempt solvents to meet the < 250 g/L VOC content requirements of the OTC Model Rule for adhesives and sealants.

TPO

M&R

NO WELD PRODUCT

Product Code	Description	Carton	Coverage	Shelf Life
08MHTMP1	1-Gallon Pail	6 per	250 F ² per gallon	1 year



TPO CUT-EDGE SEALANT

A thermoplastic compound designed for use at the edge of cut MuleHide TPO membrane seams after the membrane has been welded to itself or to MuleHide TPO Coated Metal.



LOW-VOC CUT-EDGE SEALANT

*Meets California & Utah VOC regulations

TPO

M&R

Product Code	Description	Coverage	Carton	Shelf Life
08MHTCESCE	16-oz Bottle	250 -275 lf 1/8" bead	8 per	1 year
08MHTCELVE	16-oz Bottle	250 -275 lf 1/8" bead	8 per	1 year



WEATHERED MEMBRANE CLEANER

Used to clean in-service EPDM membrane that has been exposed to the weather and clean TPO membrane prior to the welding process. Helps to loosen and remove dirt and other contaminants from the surface of the EPDM and TPO membranes and leaves a suitable surface for welding or the subsequent application of Tape Primer.

LOW-VOC WEATHERED MEMBRANE CLEANER

*Meets California & Utah VOC regulations

EPDM

TPO

M&R

NO WELD PRODUCT

Product Code	Description	Carton	Coverage
08MHTWMC1	1-Gallon Pail	2 per	400 sq.ft. (1-side) per gallon
08MHTLVMC1	1-Gallon Pail / Low-VOC*	2 per	



UNIVERSAL CORNERS

Uniform in shape and size and provide water tightness at corners formed by TPO coated metal and/or TPO flashing membrane. Provides a neat, finished look to building corners, curbs and parapet flashings with no cutting or stretching required.

TPO

M&R

Product Code	Description	Carton	Weight
08MHTUCWHE	White	20 per	5 lbs.



UNIVERSAL SINGLE-PLY SEALANT

A 100% solids, solvent free, one-part, polyether sealant that provides a weather-tight seal to a variety of building substrates. Provides excellent adhesion to substrates such as stone, masonry, ceramic, marble, wood, steel, aluminum, most plastics and composites. Not recommended as a glass-glazing sealant.

EPDM

TPO

PVC

M&R

NO WELD PRODUCT

Product Code	Description	Weight	Coverage	Shelf Life
08MHUSPSWH	10.1-oz Tube (24 per carton)	24 lbs.	25 Ln.ft. with 1/4" bead	1 year

TPO ACCESSORIES



MATE-LINE TAPE

Specifically developed for use with EPDM single-ply membrane roofing systems. May be used in conjunction with the MuleHide Tape Primer to strip gravel stops, drip aprons, seams or batten bars, and can be used to make repairs.

Requires the use of Tape Primer or Low-VOC Tape Primer.

EPDM TPO NO WELD PRODUCT

Product Code	Description	Carton	Weight	Shelf Life
08MHMLW061	6" x 100' White	2 per	52 lbs.	1 year
08MHMLW126	12" x 65' White	1 per	35 lbs.	
08MHMLW121	12" x 100' White		54 lbs.	



WHITE UNCURED FLASHING TAPE

May be used in conjunction with the MuleHide Tape Primer to flash inside and outside corners, pipes, pitch pockets or other penetrations that require the flashing to be molded or conform to an irregular shape. Not permitted for use in flashing gravel stops, drip aprons or stripping seams or batten bars.

Requires the use of Tape Primer or Low-VOC Tape Primer.

EPDM TPO M&R NO WELD PRODUCT

Product Code	Description	Carton	Weight	Shelf Life
08MHUT095W	9" x 50' White	1 per	15 lbs.	6-9 months
08MHUT125W	12" x 50' White	1 per	20 lbs.	



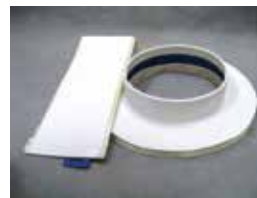
WHITE & GRAY PREMOLDED EPDM PIPE BOOTS

Accommodates single-pipe sizes from 1" to 6" in diameter. Conical-shaped steps securely seal all single-pipe penetrations. The large, double-thick, molded rib at the top of each step offers superior tear-resistance and reinforcement, as well as a cutting guide.

Requires the use of Tape Primer or Low-VOC Tape Primer.

EPDM TPO M&R NO WELD PRODUCT

Product Code	Description	Carton	Size	Weight	Shelf Life
08MHPBTW6T	White with clamps and tape rings	10 per	1" - 6"	10 lbs.	1 year
08MHPBTG6T	Gray with clamps and tape rings				



WHITE & GRAY POURABLE SEALER POCKETS

Prefabricated pockets consisting of a 2" (50 mm) wide plastic support strip with attached Uncured EPDM Flashing Tape ideal for sealing irregular, hard to flash penetrations through the membrane. Use MuleHide Thermoplastic One-Part Pourable Sealer as a white filler.

Requires the use of Tape Primer or Low-VOC Tape Primer.

EPDM TPO M&R NO WELD PRODUCT

Product Code	Description	Carton	Weight	Shelf Life
08MHSP6WH	6" White	12 per	6 lbs.	9 months
08MHSP6G	6" Gray		5 lbs.	



WHITE & GRAY PRE-CUT INSIDE/OUTSIDE CORNERS

Ideal for installing inside and outside corners. Consists of .060 inch (1.5 mm) thick uncured EPDM flashing material laminated to cured butyl rubber tape and rolled onto a poly release liner providing .090-mils (2.25 mm) of total thickness.

Requires the use of Tape Primer or Low-VOC Tape Primer.

EPDM TPO M&R NO WELD PRODUCT

Product Code	Description	Carton	Weight	Shelf Life
08MHCP5WH2	7" x 9", White	20 per	8 lbs.	9 months
08MHCP5G2	7" x 9", Gray			



CURED COVER TAPE

A nominal 60-mil, cured EPDM membrane strip laminated to nominal 30-mil cured butyl rubber tape and rolled onto a release liner, for a total nominal thickness of 90-mil. Commonly used to strip in metal edging.

Requires the use of Tape Primer or Low-VOC Tape Primer.

EPDM NO WELD PRODUCT

Product Code	Description	Carton	Weight	Shelf Life
08MHLAT62W	6" x 25' White	4 per	25 lbs.	1 year

PVC ACCESSORIES



PVC PIPE SEALS

An injection-molded, pre-formed flashing for single-pipe penetrations made of MuleHide non-reinforced PVC material. Designed to add ease to the installation process while offering increased water-tight security and improved aesthetics.

PVC

M&R

Product Code	Description	Size	Carton	Weight
08MHPP348W	White	3/4" to 8" OD	8 per	8 lbs.



PVC T-JOINT COVER

Used to seal step-offs at splice intersections. Installation is mandatory on all 60-mil and 80-mil PVC systems and on 45-mil systems where step-offs have not been properly sealed.

PVC

M&R

Product Code	Description	Size	Carton	Weight
08MHPTJPWH	White	4.5" circle	100 per	4 lbs.



PVC MOLDED SEALANT POCKETS

Interlocking, two-piece prefabricated pockets of non-reinforced PVC material used to seal pipe clusters or other irregular shaped penetrations. Pockets length can be adjusted from 7-1/2" to 11-1/2" by following the pre-molded cutting lines.

PVC

M&R

Product Code	Description	Size	Carton	Weight
08MHTMSAPW	White	7-1/2" to 11-1/2"	5 per	4 lbs.



PVC INSIDE & OUTSIDE CORNERS

Uniform in shape and size and provides water tightness at inside or outside corners formed by PVC coated metal and/or PVC flashing membrane. Provides a neat, finished look to building corners, curbs and parapet flashings with no cutting required.

PVC

M&R

Product Code	Description	Carton	Weight
08MHPOCG	Outside Corner - Gray/Tan	12 per	1 lbs.
08MHPOCW	Outside Corner - White	12 per	1 lbs.
08MHPICG	Inside Corner - Gray/Tan	12 per	1 lbs.
08MHPICW	Inside Corner - White	12 per	1 lbs.



PVC / PVC KEE HP COVER STRIP

Non-reinforced thermoplastic polyvinyl chloride-based membrane used for stripping in PVC or PVC KEE HP coated metal roof edging.

PVC

Product Code	Description	Size	Carton	Weight
08MHPCS87W	.080 White PVC	8"x75'	1 per	28
08MHPKC81W	.060 White PVC KEE	8"x100'	2 per	56
08MHPKC87W	.080 White PVC KEE	8"x75'	1 per	26



PVC CUT EDGE SEALANT

A free-flowing polymeric material designed for use at the cut edge (exposed scrim) of MuleHide PVC reinforced membrane seams after the membrane has been welded to itself or to MuleHide PVC Coated Metal.

PVC

Product Code	Description	Coverage	Carton	Shelf Life
08MHPESPT	16-oz Bottle	225-275 lf 1/8" bead	12 per	1 year



PVC UNIVERSAL CORNERS

Uniform in shape and size and provide water tightness at corners formed by PVC coated metal and/or PVC flashing membrane. Provides a neat, finished look to building corners, curbs and parapet flashings with no cutting or stretching required.

PVC

M&R

Product Code	Description	Carton	Weight
08MHPVCIO	White	20 per	5 lbs.



100% SILICONE ROOF COATING

100% silicone based, single-part roof coating that creates a barrier that is durable, elastic, resistant to weathering, breathable, water-tight, and weatherproof. 100% Silicone Roof Coating is manufactured from durable inorganic silicone resins, reinforcing and reflective pigments and silane adhesions promoters.



Also available in black, tan, santa fe tan and custom colors.

Product Code	Color	Description	Coverage	Shelf Life
16MHSIRC5	White	5-Gallon Pail	Minimum 1.5-Gallon per Sq	2 Years



A-200 FLASHING

Highly flexible sealant for seams, penetrations, flashings, metal roof fasteners, and other areas to fill voids in the substrate. Application of product can be brushed or extruded.



Product Code	Color	Description	Coverage	Shelf Life
16MHA2002	White	2-Gallon Pail	Minimum 1.5-Gallon per Sq	2 Years
16MHA2005	White	5-Gallon Pail		



100% SILICONE SEALANT

High solids, non-shrinking, moisture-cure silicone sealant intended for sealing and repairing roofs, masonry, architectural metal and metal roof seams & fasteners. Minimal odor, contains no solvents and less than 10 grams per liter VOC. Use to seal penetrations and terminations prior to application of 100% Silicone Roof Coating. Excellent adhesion to concrete, masonry, polyurethane foam, EPDM, aged PVC, aged acrylic coatings, granular cap sheet, wood, metals, Kynar® and most other common building materials. Si TPO Primer is required for application to TPO roofs.



Product Code	Color	Description	Coverage	Shelf Life
16MHSISEA2	White	2-Gallon Pail	75-100 Lin. Ft Seams/300-400 Fastener Heads	2 Years



A-300 FINISH

A CRRC rated, highly-elastomeric coating. Exceptional durability and UV stability extends roof life. Attractive bright white reduces energy consumption. Apply by brush, roller or airless sprayer.

Also available in black, gray, tan, santa fe tan and custom colors.



Product Code	Description	Coverage	Shelf Life
16MHA3005	5-Gallon Pail - White	2-Gallons per Sq	1 Year



SI TPO PRIMER

Promotes adhesion with 100% Silicone Roof Coating to new and aged TPO roofing membranes. Manufactured from a fast- evaporating solvent carries and adhesive resins. Primer has a blue tint to allow applicator to better gauge application rates.



Product Code	Color	Description	Coverage	Shelf Life
16MHSITPRP	Clear	1-Pint w/brush applicator	1-Pint per square	2 Years
16MHSITPR1	Blue	1-Gallon Pail	1-Gallon per	
16MHSITPR5	Blue	5-Gallon Pail	8-10 Sq	



TIETEX 272 POLY FABRIC

Tietex 272 is a 100% polyester stitch-bonded fabric made without the use of adhesives, with unique elongation, quick wet-out and saturation.



Product Code	Description	Weight
09MHTT2063	1 roll - 6" X 300'	4 lbs
09MHTT2123	1 roll - 12" X 300'	7 lbs
09MHTT2403	1 roll - 40" X 324'	25 lbs

ASPHALT CEMENTS & COATINGS



102 FIBRATED ROOF COATING

A fiber-reinforced, non-polymer modified asphalt roof coating that forms a flexible, weather-resistant film, that has excellent adhesion to most surfaces.



111 NON-FIBRATED ROOF COATING

A professional grade, non-polymer modified asphalt roof coating that forms a flexible, weather-resistant film, that has excellent adhesion to most surfaces.



Product Code	Description	Coverage	Shelf Life
16MH1025	5-Gallon Pail	2-3-Gallons per 100 Sq Ft	2 Years
16MH10250	50-Gallon Drum		

Product Code	Description	Coverage	Shelf Life
16MH1115	5-Gallon Pail	2-3-Gallons per 100 Sq Ft	2 Years
16MH11150	50-Gallon Pail		



121 ASPHALT PRIMER

A general purpose penetrating asphalt primer used to promote adhesion prior to the application of hot-mopped, cold-applied and self-adhesive membrane systems, as well as roof cements, mastics, and asphalt-based adhesives.

*Miami Dade County Approved.
Meets ASTM D41.*



210 PLASTIC CEMENT

A general purpose asphalt repair product for use as a repair material in many types of asphalt roof membranes. MuleHide #210 Plastic Cement has a heavy "trowel-grade" consistency that will not separate.

*Miami Dade County Approved.
Meets ASTM D4586.*



Product Code	Description	Coverage	Shelf Life
16MH12114	14 oz can (30/crtn)	30 Sq Ft per can	2 Years
16MH1215	5-Gallon Pail	1-Gallon per 100 Sq Ft	
16MH12150	50-Gallon Drum		

Product Code	Description	Coverage	Shelf Life
16MH2103	3-Gallon Pail	8-Gallons per 100 Sq Ft for 1/8"	2 Years
16MH2105	5-Gallon Pail		



211 PLASTIC CEMENT

For use as a cold-applied sealing and repair material in many types of asphalt roof membranes. It has a heavy "trowel-grade" consistency which makes this product ideal for flashing details and a variety of waterproofing repairs, such as moving joints and roof penetrations. Has a superior formulation that will not separate.

*Miami Dade County Approved.
Meets ASTM D4586.*



221 WET/DRY ROOF CEMENT

A wet repair of roof leaks in many types of asphalt roof membranes. Its heavy "trowel-grade" consistency makes this product ideal for sealing and patching temporary emergency holes and cracks in roofs, even in standing water. Formulation is non-destructive to asphalt-based roofing materials.

*Miami Dade County Approved.
Meets ASTM D4586, D3409.*



Product Code	Description	Coverage	Shelf Life
16MH2113	3-Gallon Pail	10-12 Sq Ft per Gallon when applied 1/8" thick	2 Years
16MH2115	5-Gallon Pail		
16MH2113W	3-Gallon Pail - Winter Grade		
16MH2115W	5-Gallon Pail - Winter Grade		

Product Code	Description	Coverage	Shelf Life
16MH2213	3-Gallon Pail	10-12 Sq Ft per Gallon when applied 1/8" thick	2 Years
16MH2215	5-Gallon Pail		

ASPHALT CEMENTS & COATINGS



231 FLASHING CEMENT

For use as a cold-applied flashing cement in many types of asphalt roof membranes. Its heavy "trowel-grade" consistency makes this product ideal for flashing details and a variety of waterproofing repairs, such as moving joints and roof penetrations. Superior formulation will not separate.

*Miami Dade County Approved.
Meets ASTM D4586, D3409.*

M&R

Product Code	Description	Coverage	Shelf Life
16MH2313	3-Gallon Pail	10-12 Sq Ft per Gallon when applied 1/8" thick	2 Years
16MH2315	5-Gallon Pail		
16MH2313W	3-Gallon Pail - Winter Grade		
16MH2315W	5-Gallon Pail - Winter Grade		



241 PREMIUM MODIFIED FLASHING CEMENT

A high-quality formulation for use as a cold-applied bonding agent for SBS modified bitumen roof system. Heavy, 'trowel-grade' consistency which makes it ideal for flashing details, attachment of membrane to steep slopes and parapet walls, and a variety of waterproofing repairs. Its flexibility and elasticity make it superior to standard plastic and flashing cements especially where there are moving joints.

*Miami Dade County Approved.
Meets ASTM D4586, D3409.*

M&R

Product Code	Description	Coverage	Shelf Life
16MH2413	3-Gallon Pail	10-12 Sq Ft per Gallon when applied 1/8" thick	2 Years
16MH2415	5-Gallon Pail		
16MH2413W	3-Gallon Pail - Winter Grade		
16MH2415W	5-Gallon Pail - Winter Grade		



251 PREMIUM WET/DRY ELASTOMERIC FLASHING CEMENT

A high-quality formulation for wet repair of roof leaks in many types of asphalt roof membranes and SBS roofing systems. This product is ideal for sealing and patching temporary emergency holes and cracks in roofs, even in standing water. Can be used for emergency repairs on shingles, BUR (Built-up Roofing), concrete, and general damp proofing.

*Miami Dade County Approved.
Meets ASTM D4586, D3409.*

M&R

Product Code	Description	Coverage	Shelf Life
16MH2513	3-Gallon Pail	10-12 Sq Ft per Gallon when applied 1/8" thick	2 Years
16MH2515	5-Gallon Pail		



311 NON-FIBRATED EMULSION ROOF COATING

An asphalt-based, clay emulsion roof coating that can be used as a protective coating over smooth surfaced asphalt built-up and modified bitumen membranes. Can also be used as a base coat for reflective coatings. This product does not flow when applied in thick coatings. After drying, stays in place even when exposed to elevated temperatures.

*Miami Dade County Approved.
Meets ASTM D1227 Type III Class I.*

M&R

Product Code	Description	Coverage	Shelf Life
16MH3115	5-Gallon Pail	3-4-Gallons per 100 Sq Ft	18 Months
16MH31155	55-Gallon Drum		
16MH311275	275-Gallon Tote		



401 PREMIUM FIBRATED ALUMINUM ROOF COATING

Provides premium, high-performance protection for asphalt-based roofs. It is a heavy-bodied formulation with special reinforcing fibers that "push" the aluminum flakes to the surface for long lasting reflectivity and greater durability. In addition, this formula is non-destructive to asphalt-based roofing membranes.

*Miami Dade County Approved.
Meets ASTM D2824 Type III.*

M&R

Product Code	Description	Coverage	Shelf Life
16MH4015	5-Gallon Pail	1-1.5-Gallons per 100 Sq Ft	2 Years
16MH40150	50-Gallon Drum		



406 STANDARD FIBRATED ALUMINUM ROOF COATING

Provides high-performance protection for asphalt-based roofs. It is a heavy-bodied formulation with special reinforcing fibers that "push" the aluminum flakes to the surface for long lasting reflectivity and greater durability. In addition, this formula is non-destructive to asphalt-based roofing membranes.

*Miami Dade County Approved.
Meets ASTM D2824 Type III.*

M&R

Product Code	Description	Coverage	Shelf Life
16MH4065	5-Gallon Pail	1-1.5-Gallons per 100 Sq Ft	2 Years
16MH40650	50-Gallon Drum		



410 PREMIUM NON-FIBRATED ALUMINUM ROOF COATING

Provides premium, high-performance protection for asphalt-based roofs. It is easier to spread and provides greater coverage, though it weathers more rapidly. This formula is non-destructive to asphalt-based roofing membranes.

*Miami Dade County Approved.
Meets ASTM D2824 Type I.*

M&R



416 STANDARD NON-FIBRATED ALUMINUM ROOF COATING

Provides high-performance protection for asphalt-based roofs. It is easier to spread and provides greater coverage, though it weathers more rapidly. This formula is non-destructive to asphalt-based roofing membranes.

*Miami Dade County Approved.
Meets ASTM D2824 Type I.*

M&R

Product Code	Description	Coverage	Shelf Life
16MH4105	5-Gallon Pail	1-1.5-Gallons per 100 Sq Ft	2 Years
16MH41050	50-Gallon Drum		

Product Code	Description	Coverage	Shelf Life
16MH4165	5-Gallon Pail	1-1.5-Gallons per 100 Sq Ft	2 Years
16MH41650	50-Gallon Drum		



420 MOD BIT ADHESIVE - BRUSH GRADE

Brush Grade is a select formulation for use as a cold-applied bonding agent for SBS modified bitumen base sheets and SBS modified bitumen cap sheets.

*Miami Dade County Approved.
Meets ASTM D3019.*

M&R



421 MOD BIT ADHESIVE - TROWEL GRADE

Trowel Grade is a high-quality formulation for use as a cold-applied bonding agent for SBS modified bitumen roof systems. Heavy, "trowel-grade" consistency makes this product ideal for flashing details, attachment of membrane to steep slopes and parapet walls and a variety of waterproofing repairs, especially at moving joints where its flexibility and elasticity make it superior to standard plastic cements. In addition, the formulation is non-destructive to asphalt based roofing membranes.

*Miami Dade County Approved.
Meets ASTM D4586, D3409.*

M&R

Product Code	Description	Coverage	Shelf Life
16MH4205	5-Gallon Pail	1-1.5-Gallons per 100 Sq Ft	18 Months

Product Code	Description	Coverage	Shelf Life
16MH4213	3-Gallon Pail	1-1.5-Gallons per 100 Sq Ft	2 Years
16MH4215	5-Gallon Pail		



CAULKS & SEALANTS



	JTS 1	SEBS 1	Silicone Sealant
Ideal Application	Large joints & termination bars for concrete, masonry, EPDM, PVC, TPO (primed), wood, vinyl and most other common building materials	Metal repair & restoration, for use with the SEBS Roof Coating System	Single-ply membrane, modified restoration, metal, SPF, for use with the Silicone Roof Coating System
Common Uses	Sealing penetrations for residential roofing; adheres to wet and underwater surfaces	Multipurpose use on all types of roofs including EPDM, TPO, ModBit, Kynar®, shingles, asphalt, concrete, masonry, tile	General waterproofing and mildew-resistant applications; seams, fasteners, windows, doors, gutters, siding
Colors	9 - Colors: Black, Bronze, Clear, Gray, Limestone, Medium Bronze, Terra Cotta, White, Wicker Tan	3 - Colors: Black, Pure Clear, White	2 - Colors: Clear, White
Packaging	10 oz plastic tubes, 30 per carton		
Type	Moisture-cure urethane sealant made with 100% solids	Thermoplastic elastomer-based, solvent-based terpolymer sealant	High-solid, non-shrinking, oxime silicone sealant
Elongation & Tensile Strength	500%, >180 psi	500%, ≥350 psi (700%, 700 psi – Pure Clear)	500%, 200 psi
Max. joint size	2-inch	3/8-inch	1-inch
Skin time	30 minutes	30 minutes	30 minutes
Tack-free	1 hours	1 hours	1 hour
VOC	Less than 15 g/L	322 g/L	46 g/L
Shelf Life	1 year	1 year	1 year

Elongation - The increase in the gauge length, measured after fracture of the specimen within the gauge length, usually expressed as a percentage of the original gauge length.

Tensile Strength - The maximum stress the material will sustain before fracture. The tensile strength is calculated by dividing the maximum load by the original cross-sectional area of the test specimen.



100% SILICONE SEALANT

Is a high-solids non-shrinking moisture-cure silicone sealant that has minimal odor, contains no solvents and has less than 10 grams per liter VOC. Provides excellent adhesion to concrete, masonry, polyurethane foam, EPDM, TPO, aged PVC, aged acrylic coatings, granular cap sheet, wood, metals, Kynar® Finishes and most other common building materials. MuleHide Si TPO Primer is required for TPO roof membranes.

Removable Tip



Product Code	Color	Description	Coverage	Shelf Life
16MHSISECL	Clear	1 tube (30/ctn)	25 Ln Ft with 1/4" bead	1 Year
16MHSISEWH	White	1 tube (30/ctn)		



RGA 1

Flashing Cement is the highest quality, most versatile asphalt-based roof cement ever developed. This distinctive product is intended for use by quality-driven roofing professionals who demand that their materials meet the highest performance standards. Its outstanding adhesion to wet, dry and even underwater surfaces allows application in any conditions. With wider usable temperature ranges, RGA1 applies easily at seasonal temperature extremes.

Removable Tip



Product Code	Color	Description	Coverage	Shelf Life
16MHRGA1BT	Black	1 tube (30/ctn)	20 Ln Ft with 1/4" bead	2 Years



SEBS 1

Is a high-performance, multipurpose thermoplastic elastomer-based roofing sealant. Provides excellent adhesion to most surfaces including the list above. Use to seal seams, flashings and penetrations on all types of roofs. Ideal for roofing applications where appearance is important.

Removable Tip



Product Code	Color	Coverage	Carton	Shelf Life
30MHSEB1WH	White	25 Ln Ft with 1/4" bead	(30) 10 oz tubes/ctn	1 Year
30MHSEB1BK	Black			
30MHSEB1PC	Pure Clear			



JTS 1 JOINT & TERMINATION SEALANT

JTS 1 is a moisture-cure urethane sealant made with 100% solids. JTS 1 seals large joints, roof termination bars and adheres to concrete, masonry, EPDM, PVC, TPO (primed), wood, vinyl and most other common building materials. *Removable Tip*



Product Code	Color	Coverage	Carton	Shelf Life
30MHJTS1BK	Black	25 Ln Ft with 1/4" bead	(30) 10 oz tubes/ctn	1 year
30MHJTS1BZ	Bronze			
30MHJTS1CL	Clear			
30MHJTS1GY	Gray			
30MHJTS1LS	Limestone			
30MHJTS1MB	Medium Bronze			
30MHJTS1TC	Terra Cotta			
30MHJTS1WH	White			
30MHJTS1WT	Wicker Tan			

Color Options:

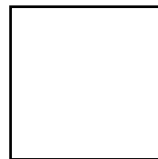
*colors shown are matched as accurately as possible, but may vary slightly from finished product.



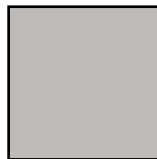
Black



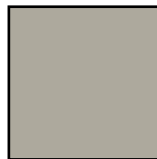
Bronze



Clear



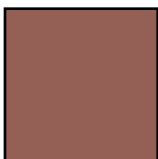
Gray



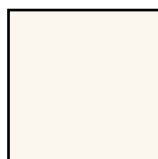
Limestone



Medium Bronze



Terra Cotta



White



Wicker Tan

SEAL-FAST TAPES & PRODUCTS

Seal-Fast® Tapes may be used on a wide variety of surfaces including difficult roof materials such as: EPDM, TPO, most PVC, CSPE/Hypalon, CPE, SBS, APP modified, asphalt BURs, coal tar BURs, all metal roofs, tiles, shingles, aluminum, galvanized steel, gypsum board, wood, polyethylene, propylene, polystyrene, fiberglass, brick, concrete, masonry, OSB, etc. This product may be used to repair gutters, chimney flashings, and metal roofs on mobile homes and transport vehicles.



.035 SEAL-FAST TAPE

May be used on a wide variety of surfaces including difficult roof materials. This product may be used to repair gutters, chimney flashings, and metal roofs on mobile homes and transport vehicles. Seal-Fast® Tape makes a permanent water-tight seal.

M&R

Product Code	Description	Carton	Weight	Shelf Life
08MHSFT35W	3" X 50' White	8/ctn	24 lbs.	1 year
08MHSFT62W	6" X 25' White	6/ctn		
08MHSFT65W	6" X 50' White	4/ctn		
08MHSFT45B	4" X 50' Black	6/ctn		
08MHSFT65B	6" X 50' Black	4/ctn		



SEAL-FAST FABRIC TAPE - WHITE

This product may be used to repair gutters, chimney flashings, metal roofs on mobile homes and transport vehicles. Seal-Fast® Fabric Tape makes a permanent water-tight seal.

M&R

Product Code	Description	Carton	Weight	Shelf Life
08MHSFF62W	6" X 25'	6/ctn	24 lbs.	1 year



LIQUI-FLASH

A one-component, non-shrink, advanced technology polyurethane sealant designed for filling and sealing pitch pockets and pans, metal roof seams and fasteners, inlaid gutters, polyurethane foam, aged smooth asphalt and modified bitumen, aged PVC and EPDM roofs. Compatible with MuleHide acrylic and silicone roof coatings.



SEAL-FAST TEMPORARY LOW-SLOPE ROOF SEALER

Immediately seals a roof leak when weather does not permit a repair.

M&R

Product Code	Description	Carton	Weight	Shelf Life
16MHSFE50	2.5-Gallon Jug	2 Jugs	50lbs.	Unlimited when kept dry



Product Code	Description	Carton	Weight	Shelf Life
16MHLFWH1	1-Gallon Pail - White	1 pail	33.8 lbs.	2 yrs.
16MHLFWH35	3.5-Gallon Pail - White	1 pail	25 lbs.	
16MHLFBK1	1-Gallon Pail - Black	1 pail	33.8 lbs.	
16MHLFBK35	3.5-Gallon Pail - Black	1 pail	25 lbs.	
16MHLFGY1	1-Gallon Pail - Gray	1 pail	33.8 lbs.	
16MHLFGY35	3.5-Gallon Pail - Gray	1 pail	25 lbs.	



REPAIR HERO

A solvent-based, fiber-reinforced terpolymer sealant intended for the repair of asphalt, modified bitumen, metal, Kynar®, concrete, TPO, PVC, Elvaloy®/PVC, Hypalon® (CSPE), PIB and EPDM roofs.



Product Code	Description	Carton	Weight
16MHRHWH1	1-Gallon Pail - White	4/ctn	33.8 lbs.
16MHRHWH3	3-Gallon Pail - White	1 pail	25 lbs.
16MHRHBK1	1-Gallon Pail - Black	4/ctn	33.8 lbs.
16MHRHBK3	3-Gallon Pail - Black	1 pail	25 lbs.
16MHRHGY1	1-Gallon Pail - Gray	4/ctn	33.8 lbs.
16MHRHGY3	3-Gallon Pail - Gray	1 pail	25 lbs.

ACCESSORIES



LARGE PITCH PAN KIT
 Create (4) 7" Pitch Pans per kit.
Kit includes: 16 corners,
 16 straights, 3 tubes JTS 1 and
 1 - 2 liter pouch of MP Liquid
 Sealant.



SHAPESHIFT PITCH PAN
 Consists of straight and outside
 corner sections snapped
 together to create an endless
 number of pitch pan sizes to
 seal around roof projections.
 The pieces snap together with
 interlocking joints.



Product Code	Description	Carton	Weight
08MHSSPC48	Corners	48 per	6 lbs.
08MHSSPC16	Corners	16 per	2 lbs.
08MHSSPS16	Straights	16 per	2 lbs.



SMALL PITCH PAN KIT
 Create (4) 4" Pitch Pans per kit.
Kit includes: 16 corners, 2
 tubes JTS 1 and 3 - 2 liter
 pouches of MP Liquid Sealant.

Customize kits by adding
 additional components.



Product Code	Description	Carton	Weight
08MHSPKLWH	Large Pitch Pan Kit	1	6 lbs.
08MHSPKSWH	Small Pitch Pan Kit	1	2 lbs.



MP LIQUID SEALANT
 Single-component, non-shrink, advanced-
 technology sealant designed for sealing
 metal roof seams and fasteners, gutter
 seams and liquid flashings. Semi-self leveling
 sealent consisting of 100% solids which
 results in zero shrinkage.



Product Code	Description	Carton	Shelf Life
08MHMPLS2W	2 Liter Pouch, White	(4) 2 Liter Pouch	1 Year
08MHMPLS2B	2 Liter Pouch, Black		





“The name trusted in roofing since 1906”

Customer Line: 800-786-1492 • www.mulehide.com



The information herein should not be considered all-inclusive and should always be accompanied by a review of the Mulehide specifications and guidelines and good application practices.

This information herein is based upon data and knowledge considered to be true and accurate at the time of printing and is provided for the reader's consideration, investigation and verification. No statement made by anyone may supersede this information, except when done in writing by Mule-Hide Products Co., Inc. (“MuleHide”) MuleHide does not warrant any results to be obtained. Statements concerning possible use of MuleHide products are made without knowledge of your particular roof and such an application may not be fit for your particular purpose. MuleHide **DISCLAIMS ALL WARRANTIES, INCLUDING THE IMPLIED WARRANTY OF MERCHANTABILITY AND FITNESS FOR A PARTICULAR PURPOSE**, except written warranties attached to MuleHide and written warranties signed by an officer of MuleHide.

Visit the MuleHide website at www.mulehide.com prior to any installation for updated technical specifications and details. MuleHide is a U.S. registered trademark. DensDeck is wholly owned registered trademark of Georgia-Pacific Gypsum LLC/Georgia-Pacific Wood Products LLC. SECUROCK is wholly owned registered trademark of USG Corporation. Kynar is wholly owned registered trademark of Arkema Inc. Elvaloy is wholly owned registered trademark of E.I. du Pont de Nemours and Company or its affiliates. All rights reserved.