

"The name trusted in roofing since 1906"

MAINTENANCE & REPAIR GUIDE

ROOFING PRODUCTS & SYSTEMS

TABLE OF CONTENTS



| | |
|---|-------|
| EPDM Accessories | 3-5 |
| TPO Accessories | 6-8 |
| PVC Accessories | 9 |
| Coatings | 10 |
| Asphalt Cements & Coatings | 11-13 |
| Caulks & Sealants | 14-15 |
| Seal-Fast Tapes & Accessories .. | 16-17 |

EPDM ACCESSORIES



MATE-LINE TAPE

Specifically developed for use with EPDM single-ply membrane roofing systems. May be used in conjunction with the MuleHide Tape Primer to strip gravel stops, drip aprons, seams or batten bars, and can be used to make repairs.

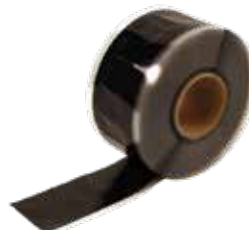
Requires the use of Tape Primer or Low-VOC Tape Primer.

EPDM

TPO

NO WELD PRODUCT

| Product Code | Description | Carton | Weight | Shelf Life |
|--------------|------------------|--------|---------|------------|
| 08MHMLB091 | 9" x 100' Black | 2 per | 34 lbs. | 1 year |
| 08MHMLB126 | 12" x 65' Black | 1 per | 30 lbs. | |
| 08MHMLB121 | 12" x 100' Black | | 47 lbs. | |



EPDM IN-SEAM TAPE

A black or white, butyl rubber-based adhesive in tape form. Formulated to provide high green strength in both shear and peel. May be used on ballasted, mechanically attached and fully adhered EPDM roofing systems.

Requires the use of Tape Primer or Low-VOC Tape Primer.

EPDM

M&R

| Product Code | Description | Carton | Shelf Life |
|--------------|----------------|--------|------------|
| 08MHINSMT2 | Black 3" x 25' | 12 per | 1 year |



CURED COVER TAPE

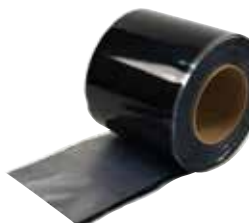
A nominal 60-mil, cured EPDM membrane strip laminated to nominal 30-mil cured butyl rubber tape and rolled onto a release liner, for a total nominal thickness of 90-mil. Commonly used to strip in metal edging.

Requires the use of Tape Primer or Low-VOC Tape Primer.

EPDM

M&R

| Product Code | Description | Carton | Weight | Shelf Life |
|--------------|----------------|--------|---------|------------|
| 08MHLAT625 | 6" x 25' Black | 4 per | 25 lbs. | 1 year |
| 08MHLAT62W | 6" x 25' White | | | |



UNCURED FLASHING TAPE

May be used in conjunction with the MuleHide Tape Primer to flash inside and outside corners, pipes, pitch pockets or other penetrations that require the flashing to be molded or conform to an irregular shape. Not permitted for use in flashing gravel stops, drip aprons or stripping seams or batten bars.

Requires the use of Tape Primer or Low-VOC Tape Primer.

EPDM

M&R

| Product Code | Description | Carton | Weight | Shelf Life |
|--------------|----------------|--------|---------|------------|
| 08MHUT062B | 6" X 25' Black | 8 per | 38 lbs. | 6-9 months |

EPDM ACCESSORIES



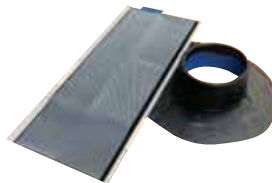
PRE-CUT INSIDE/OUTSIDE CORNERS

Ideal for installing inside and outside corners. Consists of .060 inch (1.5 mm) thick uncured EPDM flashing material laminated to cured butyl rubber tape and rolled onto a poly release liner providing .090-mils (2.25 mm) of total thickness.

EPDM M&R

Requires the use of Tape Primer or Low-VOC Tape Primer.

| Product Code | Description | Carton | Weight | Shelf Life |
|--------------|----------------|--------|--------|------------|
| 08MHPCC20 | 7" x 9", Black | 20 per | 5 lbs. | 9 months |
| 08MHCPSWH2 | 7" x 9", White | | 8 lbs. | |
| 08MHCPSG2 | 7" x 9", Gray | | 8 lbs. | |



POURABLE SEALER POCKETS

Ideal for sealing irregular, hard to flash penetrations through the membrane. Prefabricated pockets consisting of a 2" (50 mm) wide plastic support strip with attached Uncured EPDM Flashing Tape.

Requires the use of Tape Primer or Low-VOC Tape Primer.

EPDM M&R

| Product Code | Description | Carton | Weight | Shelf Life |
|--------------|-------------|--------|--------|------------|
| 08MHPSP4 | 4" Black | 12 per | 4 lbs. | 9 months |
| 08MHPSP6WH | 6" White | | 6 lbs. | |
| 08MHPSP6G | 6" Gray | | 5 lbs. | |



PREMOLDED EPDM PIPE BOOTS

Accommodates single pipe sizes from 1" to 6" in diameter. Conical-shaped steps securely seal all single-pipe penetrations. The large, double-thick, molded rib at the top of each step offers superior tear-resistance and reinforcement, as well as a cutting guide.

Requires the use of Tape Primer or Low-VOC Tape Primer.

EPDM M&R

| Product Code | Description | Carton | Size | Weight | Shelf Life |
|--------------|----------------------------------|--------|--------|---------|------------|
| 08MHPBTB6T | Black with clamps and tape rings | 10 per | 1"- 6" | 8 lbs. | 1 year |
| 08MHPBTW6T | White with clamps and tape rings | | | 10 lbs. | |
| 08MHPBTG6T | Gray with clamps and tape rings | | | 10 lbs. | |



WATER CUT-OFF MASTIC

Used to seal roofing membranes to stop water penetration into the roofing system. Common uses are at drain terminations and behind MuleHide All Purpose Bars at wall terminations.

LOW-VOC WATER CUT-OFF MASTIC

EPDM TPO PVC M&R

| Product Code | Description | Weight | Coverage | Shelf Life |
|--------------|-----------------|---------|--------------------------|------------|
| 08MHWTRC | 11-oz Tube | 27 lbs. | 10 Ln.ft. with 1/2" bead | 1 year |
| 08MHLWTRC | (25 per carton) | | | |



EPDM BLACK LAP SEALANT

Required for sealing EPDM seams and flashings against the effects of weathering when seamed with Splice Adhesive or All Purpose Single Seal Adhesive.

EPDM M&R

| Product Code | Description | Carton | Coverage | Shelf Life |
|--------------|-------------|--------|---------------------------|------------|
| 08MHLPCB | 11-oz Tube | 25 per | 22 Ln.ft. with 5/16" bead | 1 year |



BLACK ONE-PART POURABLE SEALER

Designed for use with EPDM Pourable Sealant Pockets. The sealant's one-part, pourable consistency allows for quick pocket filling without mixing.

EPDM M&R

| Product Code | Description | Weight | Coverage | Shelf Life |
|--------------|-----------------------------------|---------|------------|------------|
| 08MHPSPBK | 1/2-Gallon Pouches (4 per carton) | 26 lbs. | 200 cu.in. | 1.5 years |



UNIVERSAL SINGLE-PLY SEALANT

A 100% solids, solvent free, one-part, polyether sealant that provides a weather-tight seal to a variety of building substrates. Provides excellent adhesion to substrates such as stone, masonry, ceramic, marble, wood, steel, aluminum, most plastics and composites. Not recommended as a glass-glazing sealant.



| Product Code | Description | Weight | Coverage | Shelf Life |
|--------------|------------------------------|---------|--------------------------|------------|
| 08MHUSPSWH | 10.1-oz Tube (24 per carton) | 24 lbs. | 25 Ln.ft. with 1/4" bead | 1 year |



TAPE PRIMER

A solvent-based product designed for one-step cleaning and priming of EPDM surfaces to be bonded with In-Seam Tapes, Uncured Flashing Tapes, Cured Cover Tapes and Pre-Taped membranes.



| Product Code | Description | Carton | Coverage | Shelf Life |
|--------------|---------------|--------|------------------------|------------|
| 08MHTAPR1 | 1-Gallon Pail | 6 per | 250 sq. ft. per gallon | 9 months |
| 08MHTAPRQ | 1-Quart Can | 8 per | | |



LOW-VOC PRIMER

A low-VOC product designed for one-step cleaning and priming of EPDM and TPO surfaces prior to the application of In-Seam Tapes and other taped products. Specially formulated using a blend of VOC exempt and non-exempt solvents to meet the < 250 g/L VOC content requirements of the OTC Model Rule for adhesives and sealants.



| Product Code | Description | Carton | Coverage | Shelf Life |
|--------------|---------------|--------|------------------------|------------|
| 08MHEPLV1 | 1-Gallon Pail | 6 per | 250 sq. ft. per gallon | 9 months |
| 08MHEPLVQ | 1-Quart Can | 8 per | | |



LOW-VOC BONDING ADHESIVE

A high strength solvent-based contact adhesive that allows bonding of EPDM and TPO to various porous and non-porous substrates. Specially formulated using a blend of VOC exempt and non-exempt solvents to meet the < 250 g/L VOC content requirements of the OTC Model Rule for adhesives and sealants.



| Product Code | Description | Coverage | Shelf Life |
|--------------|-----------------------|----------------------|------------|
| 08MHETBLV1 | 1-Gallon Pail (6/ctn) | 60 sq.ft. per gallon | 1 year |

TPO ACCESSORIES



TPO PIPE SEALS

Designed as an economical flashing for single-pipe penetrations on MuleHide TPO Membrane roof systems. TPO Pipe Seals can be used wherever the TPO Pipe Seals may be slipped over the top of the pipe.



| Product Code | Description | Size | Carton | Weight |
|--------------|-------------|---------------|--------|--------|
| 08MHTP348W | White | 3/4" to 8" OD | 8 per | 8 lbs. |



T-JOINT COVER

Used to seal step-offs at splice intersections. Installation is mandatory on all 60-mil and 80-mil TPO systems and on 45-mil systems where step-offs have not been properly sealed.



| Product Code | Description | Size | Carton | Weight |
|--------------|-------------|-------------|---------|--------|
| 08MHTTJPWH | White | 4.5" circle | 100 per | 3 lbs. |



MOLDED SEALANT POCKETS

Interlocking, two-piece prefabricated pockets of non-reinforced TPO material used to seal pipe clusters or other irregular shaped penetrations. Pockets length can be adjusted from 7-1/2" to 11-1/2" by following the pre-molded cutting lines.



| Product Code | Description | Size | Carton | Weight |
|--------------|-------------|-------------------|--------|--------|
| 08MHTMSAPW | White | 7-1/2" to 11-1/2" | 5 per | 4 lbs. |



TPO INSIDE & OUTSIDE CORNERS

Uniform in shape and size and provides water tightness at inside or outside corners formed by TPO coated metal and/or TPO flashing membrane. Provides a neat, finished look to building corners, curbs and parapet flashings with no cutting required.



| Product Code | Description | Carton | Weight |
|--------------|------------------------|--------|--------|
| 08MHTICGY | Inside Corner - Gray | 12 per | 1 lbs. |
| 08MHTICTN | Inside Corner - Tan | 12 per | 1 lbs. |
| 08MHTICWH | Inside Corner - White | 12 per | 1 lbs. |
| 08MHTOCGY | Outside Corner - Gray | 12 per | 1 lbs. |
| 08MHTOCTN | Outside Corner - Tan | 12 per | 1 lbs. |
| 08MHTOCWH | Outside Corner - White | 12 per | 1 lbs. |



THERMOPLASTIC ONE-PART POURABLE SEALER (WHITE)

Designed for use with TPO, PVC & EPDM Pourable Sealer Pockets. The sealant's one-part, pourable consistency allows for quick pocket filling without mixing.



| Product Code | Description | Weight | Coverage | Shelf Life |
|--------------|-----------------------------------|---------|------------|------------|
| 08MHTPSWHE | 1/2-Gallon Pouches (4 per carton) | 29 lbs. | 122 cu.in. | 1 year |



TPO PRIMER

A high-solids, clear (translucent color), polymer-based primer used for priming of TPO surfaces to be bonded with In-Seam Tapes, Uncured Flashing Tapes, Cured Cover Tapes, and Pre-Taped membranes.



| Product Code | Description | Carton | Coverage | Shelf Life |
|--------------|---------------|--------|-------------------------------|------------|
| 08MHTMP1 | 1-Gallon Pail | 6 per | 250 F ² per gallon | 1 year |



TPO CUT-EDGE SEALANT

A thermoplastic compound designed for use at the edge of cut MuleHide TPO membrane seams after the membrane has been welded to itself or to MuleHide TPO Coated Metal.



LOW-VOC CUT-EDGE SEALANT

*Meets California & Utah VOC regulations



| Product Code | Description | Coverage | Carton | Shelf Life |
|--------------|--------------|--------------------------|--------|------------|
| 08MHTCESCE | 16-oz Bottle | 250 -275 lf 1/8" bead | 8 per | 1 year |
| 08MHTCELVE | 16-oz Bottle | 250 -275 lf 1/8" bead | 8 per | 1 year |



WEATHERED MEMBRANE CLEANER

Used to clean in-service EPDM membrane that has been exposed to the weather and clean TPO membrane prior to the welding process. Helps to loosen and remove dirt and other contaminants from the surface of the EPDM and TPO membranes and leaves a suitable surface for welding or the subsequent application of Tape Primer.

LOW-VOC WEATHERED MEMBRANE CLEANER

*Meets California & Utah VOC regulations



| Product Code | Description | Carton | Coverage |
|--------------|--------------------------|--------|-----------------------------------|
| 08MHTWMC1 | 1-Gallon Pail | 2 per | 400 sq.ft. (1-side) per gallon |
| 08MHTLVMC1 | 1-Gallon Pail / Low-VOC* | 2 per | |



UNIVERSAL CORNERS

Uniform in shape and size and provide water tightness at corners formed by TPO coated metal and/or TPO flashing membrane. Provides a neat, finished look to building corners, curbs and parapet flashings with no cutting or stretching required.



| Product Code | Description | Carton | Weight |
|--------------|-------------|--------|--------|
| 08MHTUCWHE | White | 20 per | 5 lbs. |



UNIVERSAL SINGLE-PLY SEALANT

A 100% solids, solvent free, one-part, polyether sealant that provides a weather-tight seal to a variety of building substrates. Provides excellent adhesion to substrates such as stone, masonry, ceramic, marble, wood, steel, aluminum, most plastics and composites. Not recommended as a glass-glazing sealant.



| Product Code | Description | Weight | Coverage | Shelf Life |
|--------------|------------------------------|---------|-----------------------------|------------|
| 08MHUSPSWH | 10.1-oz Tube (24 per carton) | 24 lbs. | 25 Ln.ft. with 1/4" bead | 1 year |

TPO ACCESSORIES



MATE-LINE TAPE

Specifically developed for use with EPDM single-ply membrane roofing systems. May be used in conjunction with the MuleHide Tape Primer to strip gravel stops, drip aprons, seams or batten bars, and can be used to make repairs.

Requires the use of Tape Primer or Low-VOC Tape Primer.

EPDM TPO NO WELD PRODUCT

| Product Code | Description | Carton | Weight | Shelf Life |
|--------------|------------------|--------|---------|------------|
| 08MHMLW061 | 6" x 100' White | 2 per | 52 lbs. | 1 year |
| 08MHMLW126 | 12" x 65' White | 1 per | 35 lbs. | |
| 08MHMLW121 | 12" x 100' White | | 54 lbs. | |



WHITE UNCURED FLASHING TAPE

May be used in conjunction with the MuleHide Tape Primer to flash inside and outside corners, pipes, pitch pockets or other penetrations that require the flashing to be molded or conform to an irregular shape. Not permitted for use in flashing gravel stops, drip aprons or stripping seams or batten bars.

Requires the use of Tape Primer or Low-VOC Tape Primer.

EPDM TPO M&R NO WELD PRODUCT

| Product Code | Description | Carton | Weight | Shelf Life |
|--------------|-----------------|--------|---------|------------|
| 08MHUT095W | 9" x 50' White | 1 per | 15 lbs. | 6-9 months |
| 08MHUT125W | 12" x 50' White | 1 per | 20 lbs. | |



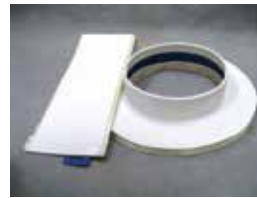
WHITE & GRAY PREMOLDED EPDM PIPE BOOTS

Accommodates single-pipe sizes from 1" to 6" in diameter. Conical-shaped steps securely seal all single-pipe penetrations. The large, double-thick, molded rib at the top of each step offers superior tear-resistance and reinforcement, as well as a cutting guide.

Requires the use of Tape Primer or Low-VOC Tape Primer.

EPDM TPO M&R NO WELD PRODUCT

| Product Code | Description | Carton | Size | Weight | Shelf Life |
|--------------|----------------------------------|--------|---------|---------|------------|
| 08MHPBTW6T | White with clamps and tape rings | 10 per | 1" - 6" | 10 lbs. | 1 year |
| 08MHPBTG6T | Gray with clamps and tape rings | | | | |



WHITE & GRAY POURABLE SEALER POCKETS

Prefabricated pockets consisting of a 2" (50 mm) wide plastic support strip with attached Uncured EPDM Flashing Tape ideal for sealing irregular, hard to flash penetrations through the membrane. Use MuleHide Thermoplastic One-Part Pourable Sealer as a white filler.

Requires the use of Tape Primer or Low-VOC Tape Primer.

EPDM TPO M&R NO WELD PRODUCT

| Product Code | Description | Carton | Weight | Shelf Life |
|--------------|-------------|--------|--------|------------|
| 08MHSP6WH | 6" White | 12 per | 6 lbs. | 9 months |
| 08MHSP6G | 6" Gray | | 5 lbs. | |



WHITE & GRAY PRE-CUT INSIDE/OUTSIDE CORNERS

Ideal for installing inside and outside corners. Consists of .060 inch (1.5 mm) thick uncured EPDM flashing material laminated to cured butyl rubber tape and rolled onto a poly release liner providing .090-mils (2.25 mm) of total thickness.

Requires the use of Tape Primer or Low-VOC Tape Primer.

EPDM TPO M&R NO WELD PRODUCT

| Product Code | Description | Carton | Weight | Shelf Life |
|--------------|----------------|--------|--------|------------|
| 08MHCP5WH2 | 7" x 9", White | 20 per | 8 lbs. | 9 months |
| 08MHCP5G2 | 7" x 9", Gray | | | |



CURED COVER TAPE

A nominal 60-mil, cured EPDM membrane strip laminated to nominal 30-mil cured butyl rubber tape and rolled onto a release liner, for a total nominal thickness of 90-mil. Commonly used to strip in metal edging.

Requires the use of Tape Primer or Low-VOC Tape Primer.

EPDM NO WELD PRODUCT

| Product Code | Description | Carton | Weight | Shelf Life |
|--------------|----------------|--------|---------|------------|
| 08MHLAT62W | 6" x 25' White | 4 per | 25 lbs. | 1 year |

PVC ACCESSORIES



PVC PIPE SEALS

An injection-molded, pre-formed flashing for single-pipe penetrations made of MuleHide non-reinforced PVC material. Designed to add ease to the installation process while offering increased water-tight security and improved aesthetics.

PVC

M&R

| Product Code | Description | Size | Carton | Weight |
|--------------|-------------|---------------|--------|--------|
| 08MHPP348W | White | 3/4" to 8" OD | 8 per | 8 lbs. |



PVC / PVC KEE HP COVER STRIP

Non-reinforced thermoplastic polyvinyl chloride-based membrane used for stripping in PVC or PVC KEE HP coated metal roof edging.

PVC

| Product Code | Description | Size | Carton | Weight |
|--------------|--------------------|---------|--------|--------|
| 08MHPCS87W | .080 White PVC | 8"x75' | 1 per | 28 |
| 08MHPKC81W | .060 White PVC KEE | 8"x100' | 2 per | 56 |
| 08MHPKC87W | .080 White PVC KEE | 8"x75' | 1 per | 26 |



PVC T-JOINT COVER

Used to seal step-offs at splice intersections. Installation is mandatory on all 60-mil and 80-mil PVC systems and on 45-mil systems where step-offs have not been properly sealed.

PVC

M&R

| Product Code | Description | Size | Carton | Weight |
|--------------|-------------|-------------|---------|--------|
| 08MHPTJPWH | White | 4.5" circle | 100 per | 4 lbs. |



PVC CUT EDGE SEALANT

A free-flowing polymeric material designed for use at the cut edge (exposed scrim) of MuleHide PVC reinforced membrane seams after the membrane has been welded to itself or to MuleHide PVC Coated Metal.

PVC

| Product Code | Description | Coverage | Carton | Shelf Life |
|--------------|--------------|-------------------------|--------|------------|
| 08MHESPT | 16-oz Bottle | 225-275 lf 1/8" bead | 12 per | 1 year |



PVC MOLDED SEALANT POCKETS

Interlocking, two-piece prefabricated pockets of non-reinforced PVC material used to seal pipe clusters or other irregular shaped penetrations. Pockets length can be adjusted from 7-1/2" to 11-1/2" by following the pre-molded cutting lines.

PVC

M&R

| Product Code | Description | Size | Carton | Weight |
|--------------|-------------|-------------------|--------|--------|
| 08MHTMSAPW | White | 7-1/2" to 11-1/2" | 5 per | 4 lbs. |



PVC UNIVERSAL CORNERS

Uniform in shape and size and provide water tightness at corners formed by PVC coated metal and/or PVC flashing membrane. Provides a neat, finished look to building corners, curbs and parapet flashings with no cutting or stretching required.

PVC

M&R

| Product Code | Description | Carton | Weight |
|--------------|-------------|--------|--------|
| 08MHPVCIO | White | 20 per | 5 lbs. |



PVC INSIDE & OUTSIDE CORNERS

Uniform in shape and size and provides water tightness at inside or outside corners formed by PVC coated metal and/or PVC flashing membrane. Provides a neat, finished look to building corners, curbs and parapet flashings with no cutting required.

PVC

M&R

| Product Code | Description | Carton | Weight |
|--------------|---------------------------|--------|--------|
| 08MHPOCG | Outside Corner - Gray/Tan | 12 per | 1 lbs. |
| 08MHPOCW | Outside Corner - White | 12 per | 1 lbs. |
| 08MHPICG | Inside Corner - Gray/Tan | 12 per | 1 lbs. |
| 08MHPICW | Inside Corner - White | 12 per | 1 lbs. |



100% SILICONE ROOF COATING

100% silicone based, single-part roof coating that creates a barrier that is durable, elastic, resistant to weathering, breathable, water-tight, and weatherproof. 100% Silicone Roof Coating is manufactured from durable inorganic silicone resins, reinforcing and reflective pigments and silane adhesions promoters.



Also available in black, tan, santa fe tan and custom colors.

| Product Code | Color | Description | Coverage | Shelf Life |
|--------------|-------|---------------|------------------------------|------------|
| 16MHSIRC5 | White | 5-Gallon Pail | Minimum 1.5-Gallon per Sq | 2 Years |



A-200 FLASHING

Highly flexible sealant for seams, penetrations, flashings, metal roof fasteners, and other areas to fill voids in the substrate. Application of product can be brushed or extruded.



| Product Code | Color | Description | Coverage | Shelf Life |
|--------------|-------|---------------|------------------------------|------------|
| 16MHA2002 | White | 2-Gallon Pail | Minimum 1.5-Gallon per Sq | 2 Years |
| 16MHA2005 | White | 5-Gallon Pail | | |



100% SILICONE SEALANT

High solids, non-shrinking, moisture-cure silicone sealant intended for sealing and repairing roofs, masonry, architectural metal and metal roof seams & fasteners. Minimal odor, contains no solvents and less than 10 grams per liter VOC. Use to seal penetrations and terminations prior to application of 100% Silicone Roof Coating. Excellent adhesion to concrete, masonry, polyurethane foam, EPDM, aged PVC, aged acrylic coatings, granular cap sheet, wood, metals, Kynar® and most other common building materials. Si TPO Primer is required for application to TPO roofs.



| Product Code | Color | Description | Coverage | Shelf Life |
|--------------|-------|---------------|---|------------|
| 16MHSISEA2 | White | 2-Gallon Pail | 75-100 Lin. Ft Seams/300-400 Fastener Heads | 2 Years |



A-300 FINISH

A CRRC rated, highly-elastomeric coating. Exceptional durability and UV stability extends roof life. Attractive bright white reduces energy consumption. Apply by brush, roller or airless sprayer.

Also available in black, gray, tan, santa fe tan and custom colors.



| Product Code | Description | Coverage | Shelf Life |
|--------------|-----------------------|------------------|------------|
| 16MHA3005 | 5-Gallon Pail - White | 2-Gallons per Sq | 1 Year |



SI TPO PRIMER

Promotes adhesion with 100% Silicone Roof Coating to new and aged TPO roofing membranes. Manufactured from a fast- evaporating solvent carries and adhesive resins. Primer has a blue tint to allow applicator to better gauge application rates.



| Product Code | Color | Description | Coverage | Shelf Life |
|--------------|-------|---------------------------|-------------------|------------|
| 16MHSITPRP | Clear | 1-Pint w/brush applicator | 1-Pint per square | 2 Years |
| 16MHSITPR1 | Blue | 1-Gallon Pail | 1-Gallon per | |
| 16MHSITPR5 | Blue | 5-Gallon Pail | 8-10 Sq | |



TIETEX 272 POLY FABRIC

Tietex 272 is a 100% polyester stitch-bonded fabric made without the use of adhesives, with unique elongation, quick wet-out and saturation.



| Product Code | Description | Weight |
|--------------|---------------------|--------|
| 09MHTT2063 | 1 roll - 6" X 300' | 4 lbs |
| 09MHTT2123 | 1 roll - 12" X 300' | 7 lbs |
| 09MHTT2403 | 1 roll - 40" X 324' | 25 lbs |

ASPHALT CEMENTS & COATINGS



102 FIBRATED ROOF COATING

A fiber-reinforced, non-polymer modified asphalt roof coating that forms a flexible, weather-resistant film, that has excellent adhesion to most surfaces.

M&R

| Product Code | Description | Coverage | Shelf Life |
|--------------|----------------|---------------------------|------------|
| 16MH1025 | 5-Gallon Pail | 2-3-Gallons per 100 Sq Ft | 2 Years |
| 16MH10250 | 50-Gallon Drum | | |



111 NON-FIBRATED ROOF COATING

A professional grade, non-polymer modified asphalt roof coating that forms a flexible, weather-resistant film, that has excellent adhesion to most surfaces.

M&R

| Product Code | Description | Coverage | Shelf Life |
|--------------|----------------|---------------------------|------------|
| 16MH1115 | 5-Gallon Pail | 2-3-Gallons per 100 Sq Ft | 2 Years |
| 16MH11150 | 50-Gallon Pail | | |



121 ASPHALT PRIMER

A general purpose penetrating asphalt primer used to promote adhesion prior to the application of hot-mopped, cold-applied and self-adhesive membrane systems, as well as roof cements, mastics, and asphalt-based adhesives.

*Miami Dade County Approved.
Meets ASTM D41.*

M&R

| Product Code | Description | Coverage | Shelf Life |
|--------------|---------------------|------------------------|------------|
| 16MH12114 | 14 oz can (30/crtn) | 30 Sq Ft per can | 2 Years |
| 16MH1215 | 5-Gallon Pail | 1-Gallon per 100 Sq Ft | |
| 16MH12150 | 50-Gallon Drum | | |



210 PLASTIC CEMENT

A general purpose asphalt repair product for use as a repair material in many types of asphalt roof membranes. MuleHide #210 Plastic Cement has a heavy "trowel-grade" consistency that will not separate.

*Miami Dade County Approved.
Meets ASTM D4586.*

M&R

| Product Code | Description | Coverage | Shelf Life |
|--------------|---------------|----------------------------------|------------|
| 16MH2103 | 3-Gallon Pail | 8-Gallons per 100 Sq Ft for 1/8" | 2 Years |
| 16MH2105 | 5-Gallon Pail | | |



211 PLASTIC CEMENT

For use as a cold-applied sealing and repair material in many types of asphalt roof membranes. It has a heavy "trowel-grade" consistency which makes this product ideal for flashing details and a variety of waterproofing repairs, such as moving joints and roof penetrations. Has a superior formulation that will not separate.

*Miami Dade County Approved.
Meets ASTM D4586.*

M&R

| Product Code | Description | Coverage | Shelf Life |
|--------------|------------------------------|--|------------|
| 16MH2113 | 3-Gallon Pail | 10-12 Sq Ft per Gallon when applied 1/8" thick | 2 Years |
| 16MH2115 | 5-Gallon Pail | | |
| 16MH2113W | 3-Gallon Pail - Winter Grade | | |
| 16MH2115W | 5-Gallon Pail - Winter Grade | | |



221 WET/DRY ROOF CEMENT

A wet repair of roof leaks in many types of asphalt roof membranes. Its heavy "trowel-grade" consistency makes this product ideal for sealing and patching temporary emergency holes and cracks in roofs, even in standing water. Formulation is non-destructive to asphalt-based roofing materials.

*Miami Dade County Approved.
Meets ASTM D4586, D3409.*

M&R

| Product Code | Description | Coverage | Shelf Life |
|--------------|---------------|--|------------|
| 16MH2213 | 3-Gallon Pail | 10-12 Sq Ft per Gallon when applied 1/8" thick | 2 Years |
| 16MH2215 | 5-Gallon Pail | | |

ASPHALT CEMENTS & COATINGS



231 FLASHING CEMENT

For use as a cold-applied flashing cement in many types of asphalt roof membranes. Its heavy "trowel-grade" consistency makes this product ideal for flashing details and a variety of waterproofing repairs, such as moving joints and roof penetrations. Superior formulation will not separate.

*Miami Dade County Approved.
Meets ASTM D4586, D3409.*

M&R

| Product Code | Description | Coverage | Shelf Life |
|--------------|------------------------------|--|------------|
| 16MH2313 | 3-Gallon Pail | 10-12 Sq Ft per Gallon when applied 1/8" thick | 2 Years |
| 16MH2315 | 5-Gallon Pail | | |
| 16MH2313W | 3-Gallon Pail - Winter Grade | | |
| 16MH2315W | 5-Gallon Pail - Winter Grade | | |



241 PREMIUM MODIFIED FLASHING CEMENT

A high-quality formulation for use as a cold-applied bonding agent for SBS modified bitumen roof system. Heavy, 'trowel-grade' consistency which makes it ideal for flashing details, attachment of membrane to steep slopes and parapet walls, and a variety of waterproofing repairs. Its flexibility and elasticity make it superior to standard plastic and flashing cements especially where there are moving joints.

*Miami Dade County Approved.
Meets ASTM D4586, D3409.*

M&R

| Product Code | Description | Coverage | Shelf Life |
|--------------|------------------------------|--|------------|
| 16MH2413 | 3-Gallon Pail | 10-12 Sq Ft per Gallon when applied 1/8" thick | 2 Years |
| 16MH2415 | 5-Gallon Pail | | |
| 16MH2413W | 3-Gallon Pail - Winter Grade | | |
| 16MH2415W | 5-Gallon Pail - Winter Grade | | |



251 PREMIUM WET/DRY ELASTOMERIC FLASHING CEMENT

A high-quality formulation for wet repair of roof leaks in many types of asphalt roof membranes and SBS roofing systems. This product is ideal for sealing and patching temporary emergency holes and cracks in roofs, even in standing water. Can be used for emergency repairs on shingles, BUR (Built-up Roofing), concrete, and general damp proofing.

*Miami Dade County Approved.
Meets ASTM D4586, D3409.*

M&R

| Product Code | Description | Coverage | Shelf Life |
|--------------|---------------|--|------------|
| 16MH2513 | 3-Gallon Pail | 10-12 Sq Ft per Gallon when applied 1/8" thick | 2 Years |
| 16MH2515 | 5-Gallon Pail | | |



311 NON-FIBRATED EMULSION ROOF COATING

An asphalt-based, clay emulsion roof coating that can be used as a protective coating over smooth surfaced asphalt built-up and modified bitumen membranes. Can also be used as a base coat for reflective coatings. This product does not flow when applied in thick coatings. After drying, stays in place even when exposed to elevated temperatures.

*Miami Dade County Approved.
Meets ASTM D1227 Type III Class I.*

M&R

| Product Code | Description | Coverage | Shelf Life |
|--------------|-----------------|---------------------------|------------|
| 16MH3115 | 5-Gallon Pail | 3-4-Gallons per 100 Sq Ft | 18 Months |
| 16MH31155 | 55-Gallon Drum | | |
| 16MH311275 | 275-Gallon Tote | | |



401 PREMIUM FIBRATED ALUMINUM ROOF COATING

Provides premium, high-performance protection for asphalt-based roofs. It is a heavy-bodied formulation with special reinforcing fibers that "push" the aluminum flakes to the surface for long lasting reflectivity and greater durability. In addition, this formula is non-destructive to asphalt-based roofing membranes.

*Miami Dade County Approved.
Meets ASTM D2824 Type III.*

M&R

| Product Code | Description | Coverage | Shelf Life |
|--------------|----------------|-----------------------------|------------|
| 16MH4015 | 5-Gallon Pail | 1-1.5-Gallons per 100 Sq Ft | 2 Years |
| 16MH40150 | 50-Gallon Drum | | |



406 STANDARD FIBRATED ALUMINUM ROOF COATING

Provides high-performance protection for asphalt-based roofs. It is a heavy-bodied formulation with special reinforcing fibers that "push" the aluminum flakes to the surface for long lasting reflectivity and greater durability. In addition, this formula is non-destructive to asphalt-based roofing membranes.

*Miami Dade County Approved.
Meets ASTM D2824 Type III.*

M&R

| Product Code | Description | Coverage | Shelf Life |
|--------------|----------------|-----------------------------|------------|
| 16MH4065 | 5-Gallon Pail | 1-1.5-Gallons per 100 Sq Ft | 2 Years |
| 16MH40650 | 50-Gallon Drum | | |



410 PREMIUM NON-FIBRATED ALUMINUM ROOF COATING

Provides premium, high-performance protection for asphalt-based roofs. It is easier to spread and provides greater coverage, though it weathers more rapidly. This formula is non-destructive to asphalt-based roofing membranes.

*Miami Dade County Approved.
Meets ASTM D2824 Type I.*

M&R

| Product Code | Description | Coverage | Shelf Life |
|--------------|----------------|-----------------------------|------------|
| 16MH4105 | 5-Gallon Pail | 1-1.5-Gallons per 100 Sq Ft | 2 Years |
| 16MH41050 | 50-Gallon Drum | | |



416 STANDARD NON-FIBRATED ALUMINUM ROOF COATING

Provides high-performance protection for asphalt-based roofs. It is easier to spread and provides greater coverage, though it weathers more rapidly. This formula is non-destructive to asphalt-based roofing membranes.

*Miami Dade County Approved.
Meets ASTM D2824 Type I.*

M&R

| Product Code | Description | Coverage | Shelf Life |
|--------------|----------------|-----------------------------|------------|
| 16MH4165 | 5-Gallon Pail | 1-1.5-Gallons per 100 Sq Ft | 2 Years |
| 16MH41650 | 50-Gallon Drum | | |



420 MOD BIT ADHESIVE - BRUSH GRADE

Brush Grade is a select formulation for use as a cold-applied bonding agent for SBS modified bitumen base sheets and SBS modified bitumen cap sheets.

*Miami Dade County Approved.
Meets ASTM D3019.*

M&R

| Product Code | Description | Coverage | Shelf Life |
|--------------|---------------|-----------------------------|------------|
| 16MH4205 | 5-Gallon Pail | 1-1.5-Gallons per 100 Sq Ft | 18 Months |



421 MOD BIT ADHESIVE - TROWEL GRADE

Trowel Grade is a high-quality formulation for use as a cold-applied bonding agent for SBS modified bitumen roof systems. Heavy, "trowel-grade" consistency makes this product ideal for flashing details, attachment of membrane to steep slopes and parapet walls and a variety of waterproofing repairs, especially at moving joints where its flexibility and elasticity make it superior to standard plastic cements. In addition, the formulation is non-destructive to asphalt based roofing membranes.

*Miami Dade County Approved.
Meets ASTM D4586, D3409.*

M&R

| Product Code | Description | Coverage | Shelf Life |
|--------------|---------------|-----------------------------|------------|
| 16MH4213 | 3-Gallon Pail | 1-1.5-Gallons per 100 Sq Ft | 2 Years |
| 16MH4215 | 5-Gallon Pail | | |



CAULKS & SEALANTS



| | JTS 1 | SEBS 1 | Silicone Sealant |
|--|--|---|--|
| Ideal Application | Large joints & termination bars for concrete, masonry, EPDM, PVC, TPO (primed), wood, vinyl and most other common building materials | Metal repair & restoration, for use with the SEBS Roof Coating System | Single-ply membrane, modified restoration, metal, SPF, for use with the Silicone Roof Coating System |
| Common Uses | Sealing penetrations for residential roofing; adheres to wet and underwater surfaces | Multipurpose use on all types of roofs including EPDM, TPO, ModBit, Kynar®, shingles, asphalt, concrete, masonry, tile, metal | General waterproofing and mildew-resistant applications; seams, fasteners, windows, doors, gutters, siding |
| Colors | 9 - Colors: Black, Bronze, Clear, Gray, Limestone, Medium Bronze, Terra Cotta, White, Wicker Tan | 6 - Colors: Black, Clear, Gray, Royal Brown, Terra Bronze, White | 2 - Colors: Clear, White |
| Packaging | 10 oz plastic tubes, 30 per carton | | |
| Type | Moisture-cure urethane sealant made with 100% solids | Thermoplastic elastomer-based, solvent-based terpolymer sealant | High-solid, non-shrinking, oxime silicone sealant |
| Elongation & Tensile Strength | 500%, >180 psi | 500%, ≥350 psi (700%, 700 psi – Pure Clear) | 500%, 200 psi |
| Max. joint size | 2-inch | 3/8-inch | 1-inch |
| Skin time | 30 minutes | 30 minutes | 30 minutes |
| Tack-free | 1 hours | 1 hours | 1 hour |
| VOC | Less than 15 g/L | 322 g/L | 46 g/L |
| Shelf Life | 1 year | 1 year | 1 year |

Elongation - The increase in the gauge length, measured after fracture of the specimen within the gauge length, usually expressed as a percentage of the original gauge length.

Tensile Strength - The maximum stress the material will sustain before fracture. The tensile strength is calculated by dividing the maximum load by the original cross-sectional area of the test specimen.



100% SILICONE SEALANT

Is a high-solids non-shrinking moisture-cure silicone sealant that has minimal odor, contains no solvents and has less than 10 grams per liter VOC. Provides excellent adhesion to concrete, masonry, polyurethane foam, EPDM, TPO, aged PVC, aged acrylic coatings, granular cap sheet, wood, metals, Kynar® Finishes and most other common building materials. MuleHide Si TPO Primer is required for TPO roof membranes.

Removable Tip

M&R

Si

| Product Code | Color | Description | Coverage | Shelf Life |
|--------------|-------|-----------------|-------------------------|------------|
| 16MHSISECL | Clear | 1 tube (30/ctn) | 25 Ln Ft with 1/4" bead | 1 Year |
| 16MHSISEWH | White | 1 tube (30/ctn) | | |



SEBS 1

Is a high-performance, multipurpose thermoplastic elastomer-based roofing sealant. Provides excellent adhesion to most surfaces including the list above. Use to seal seams, flashings and penetrations on all types of roofs. Ideal for roofing applications where appearance is important.

Removable Tip

M&R

SEBS

| Product Code | Color | Coverage | Carton | Shelf Life |
|--------------|--------------|-------------------------|----------------------|------------|
| 30MHSEB1BK | Black | 25 Ln Ft with 1/4" bead | (30) 10 oz tubes/ctn | 1 Year |
| 30MHSEB1PC | Clear | | | |
| 30MHSEB1GY | Gray | | | |
| 30MHSEB1RB | Royal Brown | | | |
| 30MHSEB1TZ | Terra Bronze | | | |
| 30MHSEB1WH | White | | | |

SEBS 1 Color Options:

Colors shown are matched as accurately as possible, but may vary slightly from finished product.



RGA 1

Flashing Cement is the highest quality, most versatile asphalt-based roof cement ever developed. This distinctive product is intended for use by quality-driven roofing professionals who demand that their materials meet the highest performance standards. Its outstanding adhesion to wet, dry and even underwater surfaces allows application in any conditions. With wider usable temperature ranges, RGA1 applies easily at seasonal temperature extremes.

Removable Tip

Mod Bit

M&R

| Product Code | Color | Description | Coverage | Shelf Life |
|--------------|-------|-----------------|-------------------------|------------|
| 16MHRGA1BT | Black | 1 tube (30/ctn) | 20 Ln Ft with 1/4" bead | 2 Years |



JTS 1 JOINT & TERMINATION SEALANT

JTS 1 is a moisture-cure urethane sealant made with 100% solids. JTS 1 seals large joints, roof termination bars and adheres to concrete, masonry, EPDM, PVC, TPO (primed), wood, vinyl and most other common building materials. *Removable Tip*

EPDM

TPO

PVC

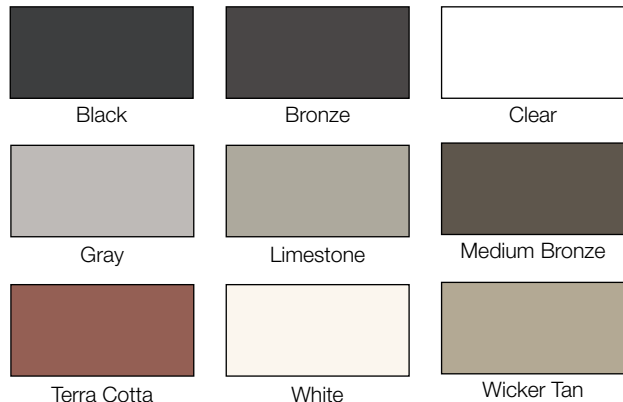
Mod Bit

M&R

| Product Code | Color | Coverage | Carton | Shelf Life |
|--------------|---------------|-------------------------|----------------------|------------|
| 30MHJTS1BK | Black | 25 Ln Ft with 1/4" bead | (30) 10 oz tubes/ctn | 1 year |
| 30MHJTS1BZ | Bronze | | | |
| 30MHJTS1CL | Clear | | | |
| 30MHJTS1GY | Gray | | | |
| 30MHJTS1LS | Limestone | | | |
| 30MHJTS1MB | Medium Bronze | | | |
| 30MHJTS1TC | Terra Cotta | | | |
| 30MHJTS1WH | White | | | |
| 30MHJTS1WT | Wicker Tan | | | |

JTS 1 Color Options:

Colors shown are matched as accurately as possible, but may vary slightly from finished product.



SEAL-FAST TAPES & PRODUCTS

Seal-Fast® Tapes may be used on a wide variety of surfaces including difficult roof materials such as: EPDM, TPO, most PVC, CSPE/Hypalon, CPE, SBS, APP modified, asphalt BURs, coal tar BURs, all metal roofs, tiles, shingles, aluminum, galvanized steel, gypsum board, wood, polyethylene, propylene, polystyrene, fiberglass, brick, concrete, masonry, OSB, etc. This product may be used to repair gutters, chimney flashings, and metal roofs on mobile homes and transport vehicles.



SEAL-FAST TAPE

May be used on a wide variety of surfaces including difficult roof materials. This product may be used to repair gutters, chimney flashings, and metal roofs on mobile homes and transport vehicles. Seal-Fast® Tape makes a permanent water-tight seal.

M&R

| Product Code | Description | Carton | Weight | Shelf Life |
|--------------|-----------------|--------|---------|------------|
| 08MHSFT35W | 3" X 50' White | 8/ctn | 24 lbs. | 1 year |
| 08MHSFT62W | 6" X 25' White | 6/ctn | | |
| 08MHSFT65W | 6" X 50' White | 4/ctn | | |
| 08MHSFT25W | 12" X 50' White | 4/ctn | | |
| 08MHSFT45B | 4" X 50' Black | 6/ctn | | |
| 08MHSFT65B | 6" X 50' Black | 4/ctn | | |



SEAL-FAST FABRIC TAPE - WHITE

This product may be used to repair gutters, chimney flashings, metal roofs on mobile homes and transport vehicles. Seal-Fast® Fabric Tape makes a permanent water-tight seal.

M&R

| Product Code | Description | Carton | Weight | Shelf Life |
|--------------|-------------|--------|---------|------------|
| 08MHSFF62W | 6" X 25' | 6/ctn | 24 lbs. | 1 year |



LIQUI-FLASH

A one-component, non-shrink, advanced technology polyurethane sealant designed for filling and sealing pitch pockets and pans, metal roof seams and fasteners, inlaid gutters, polyurethane foam, aged smooth asphalt and modified bitumen, aged PVC and EPDM roofs. Compatible with MuleHide acrylic and silicone roof coatings.



SEAL-FAST TEMPORARY LOW-SLOPE ROOF SEALER

Immediately seals a roof leak when weather does not permit a repair.

M&R

| Product Code | Description | Carton | Weight | Shelf Life |
|--------------|----------------|--------|--------|-------------------------|
| 16MHSFE50 | 2.5-Gallon Jug | 2 Jugs | 50lbs. | Unlimited when kept dry |



| Product Code | Description | Carton | Weight | Shelf Life |
|--------------|-------------------------|--------|-----------|------------|
| 16MHLFWH1 | 1-Gallon Pail - White | 1 pail | 33.8 lbs. | 2 yrs. |
| 16MHLFWH35 | 3.5-Gallon Pail - White | 1 pail | 25 lbs. | |
| 16MHLFBK1 | 1-Gallon Pail - Black | 1 pail | 33.8 lbs. | |
| 16MHLFBK35 | 3.5-Gallon Pail - Black | 1 pail | 25 lbs. | |
| 16MHLFGY1 | 1-Gallon Pail - Gray | 1 pail | 33.8 lbs. | |
| 16MHLFGY35 | 3.5-Gallon Pail - Gray | 1 pail | 25 lbs. | |



REPAIR HERO

A solvent-based, fiber-reinforced terpolymer sealant intended for the repair of asphalt, modified bitumen, metal, Kynar®, concrete, TPO, PVC, Elvaloy®/PVC, Hypalon® (CSPE), PIB and EPDM roofs.



| Product Code | Description | Carton | Weight |
|--------------|-----------------------|--------|-----------|
| 16MHRHWH1 | 1-Gallon Pail - White | 4/ctn | 33.8 lbs. |
| 16MHRHWH3 | 3-Gallon Pail - White | 1 pail | 25 lbs. |
| 16MHRHBK1 | 1-Gallon Pail - Black | 4/ctn | 33.8 lbs. |
| 16MHRHBK3 | 3-Gallon Pail - Black | 1 pail | 25 lbs. |
| 16MHRHGY3 | 3-Gallon Pail - Gray | 1 pail | 25 lbs. |

ACCESSORIES



LARGE PITCH PAN KIT

Create (4) 7" Pitch Pans per kit.
Kit includes: 16 corners, 16 straights, 3 tubes JTS 1 and 1 - 2 liter pouch of MP Liquid Sealant.



SHAPESHIFT PITCH PAN

Straight and outside corner sections snap together to create an endless number of pitch pan sizes to seal around roof projections. The pieces snap together with interlocking joints.



- Used to seal around roof projections on horizontal or vertical surfaces of mod-bit systems.

- Used to seal around roof projections on vertical surfaces of EPDM, TPO, or PVC.

| Product Code | Description | Carton | Weight |
|--------------|-------------|--------|--------|
| 08MHSSPC48 | Corners | 48 per | 6 lbs. |
| 08MHSSPC16 | Corners | 16 per | 2 lbs. |
| 08MHSSPS16 | Straights | 16 per | 2 lbs. |



SMALL PITCH PAN KIT

Create (4) 4" Pitch Pans per kit.
Kit includes: 16 corners, 2 tubes JTS 1 and 3 - 2 liter pouches of MP Liquid Sealant.

Customize kits by adding additional components.



| Product Code | Description | Carton | Weight |
|--------------|---------------------|--------|--------|
| 08MHSPKLWH | Large Pitch Pan Kit | 1 | 6 lbs. |
| 08MHSPKSWH | Small Pitch Pan Kit | 1 | 2 lbs. |



MP LIQUID SEALANT

Single-component, non-shrink, advanced-technology sealant designed for sealing metal roof seams and fasteners, gutter seams and liquid flashings. Semi-self leveling sealant consisting of 100% solids which results in zero shrinkage.



| Product Code | Description | Carton | Shelf Life |
|--------------|----------------------|-------------------|------------|
| 08MHMPLS2W | 2 Liter Pouch, White | (4) 2 Liter Pouch | 1 Year |
| 08MHMPLS2B | 2 Liter Pouch, Black | | |





“The name trusted in roofing since 1906”

Customer Line: 800-786-1492 • www.mulehide.com



The information herein should not be considered all-inclusive and should always be accompanied by a review of the Mulehide specifications and guidelines and good application practices.

This information herein is based upon data and knowledge considered to be true and accurate at the time of printing and is provided for the reader's consideration, investigation and verification. No statement made by anyone may supersede this information, except when done in writing by Mule-Hide Products Co., Inc. ("MuleHide") MuleHide does not warrant any results to be obtained. Statements concerning possible use of MuleHide products are made without knowledge of your particular roof and such an application may not be fit for your particular purpose. MuleHide DISCLAIMS ALL WARRANTIES, INCLUDING THE IMPLIED WARRANTY OF MERCHANTABILITY AND FITNESS FOR A PARTICULAR PURPOSE, except written warranties attached to MuleHide and written warranties signed by an officer of MuleHide.

Visit the MuleHide website at www.mulehide.com prior to any installation for updated technical specifications and details. MuleHide is a U.S. registered trademark. DensDeck is wholly owned registered trademark of Georgia-Pacific Gypsum LLC/Georgia-Pacific Wood Products LLC. SECURROCK is wholly owned registered trademark of USG Corporation. Kynar is wholly owned registered trademark of Arkema Inc. Elvaloy is wholly owned registered trademark of E.I. du Pont de Nemours and Company or its affiliates. All rights reserved.