



*"The name trusted in roofing since 1906"*

# **MOD BIT**

## **ROOFING SYSTEMS**

# TABLE OF CONTENTS



<b>Choosing the Right Mod Bit System</b> .....	3-4
<b>Self-Adhering Cap Sheets</b> .....	5-6
<b>Self-Adhering Base Sheets</b> .....	7
<b>Torch Premier Products</b> .....	8-9
<b>KoolCap® Products</b> .....	9
<b>Torch Products</b> .....	10
<b>Base Sheets</b> .....	11
<b>Adhesives, Sealants, Coatings &amp; Accessories</b> .....	12
<b>Product Code Approvals</b> .....	13
<b>Warranties</b> .....	14
<b>Product Chart</b> .....	15

# CHOOSING THE RIGHT MOD BIT ROOFING SYSTEM

## CHOICES TO SUIT ANY PROJECT

MuleHide offers self-adhering and torch-applied modified bitumen membranes to meet the requirements of any new construction or retrofit job.

### SELF-ADHERING MOD BIT (SBS AND APP)

Self-adhering modified bitumen membranes go down quick, clean and torch-free.

- **Torch-Free Installation:** Self-adhering membranes are the ideal choice when the risk of fire makes using a torch undesirable or prohibited.
- **Dual-Compound Technology:** Cap and base sheets have a proprietary pressure- and heat-activated adhesive on the bottom and a true APP or SBS weathering surface on the top for superior performance.
- **SEALLap® Ultra and FASTLap®:** Cap sheets incorporate patented technology for stronger, more reliable seams.
  - **SEALLap® Ultra:** Adhesive is factory-applied on the selvage edge to provide an instant bond in roll-to-roll seaming.
  - **FASTLap®:** A 6-inch granule-free end lap on each roll speeds up installation and provides a better end lap seam.
- **Fast Installation. No Adhesive Mess or Waste:** Just position the sheet, let the membrane relax, peel away the release liner, press the membrane into place, and roll the membrane to ensure adhesion.
- **Easy Repairs:** If the cap sheet becomes damaged, cutout and tie-in repairs are easy.

### APP TORCH MOD BIT

Torch-applied modified bitumen roofing systems are the classic choice for outstanding long-term performance and durability.

- **Options:** Granulated and smooth cap sheets are available to suit various project requirements.
- **Quick Installation:** Membranes are applied using traditional torch roofing techniques, so seams can be completed in conjunction with the sheet field, saving crews time.
- **FASTLap®:** Cap sheets incorporate the patented FASTLap® granular-free end laps for faster installation and better end lap seams.

# CHOOSING THE RIGHT MOD BIT ROOFING SYSTEM

## BUILT-IN TECHNOLOGY

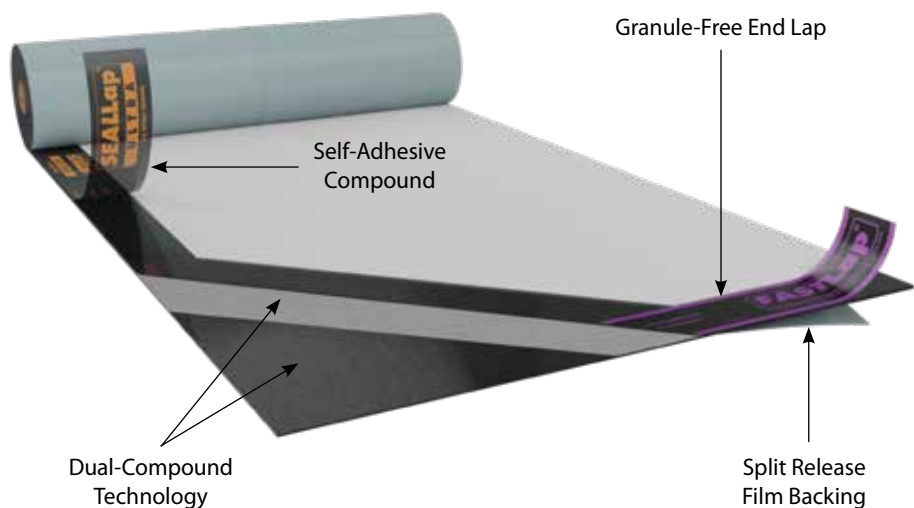
Patented technology and other innovations are built into every MuleHide modified bitumen cap sheet, helping ensure roofing systems deliver years of exceptional performance.

**CURE Technology®:** Featured in our KoolCap® products, CURE Technology is a patented thin film technology that greatly enhances performance without compromising ease of installation or overall value.

**ADESO® Technology:** ADESO Technology revolutionized the modified bitumen industry by enabling the creation of dual-compound self-adhering membranes with a true APP or SBS formulation on the top weathering side and an aggressive self-adhesive formulation on the bottom side of the reinforcement. ADESO Technology integrates patented features that enhance lap sealing and enable the creation of a variety of customized surfaces for maximum flexibility in roofing system design.

**FASTLap®:** Granule-free FASTLap end laps save crews time and labor without compromising performance. Protected by film which is removed prior to installation, FASTLap provides a smooth, clean surface for adhering consecutive rolls.

**SEALLap® Ultra:** SEALLap Ultra creates an instant side lap bond that is test-proven to be stronger than all other application methods. The same self-adhesive compound is applied to the side lap of the membrane and the bottom layer, forming a monolithic watertight seal for long-term performance.



## CAP SHEET COLOR SELECTION:



White



Black



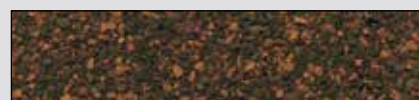
Weatherwood



Buff



Chestnut



Oak



Heather Blend



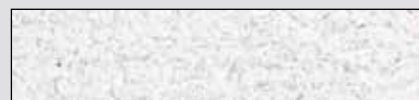
Gray Slate



Pine Green



Red Blend



KoolCap®



# SELF-ADHERING CAP SHEETS

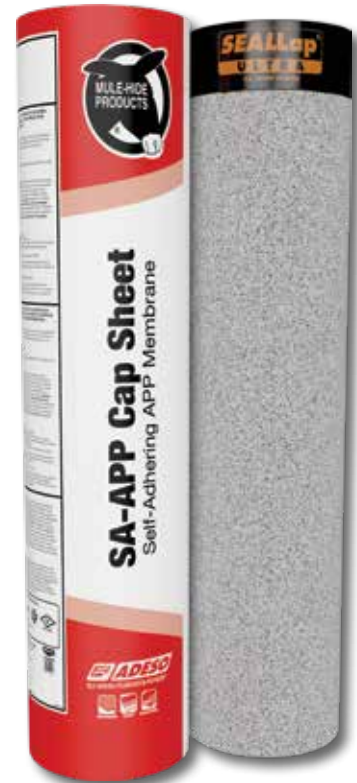
## SA-APP CAP SHEET & SA-APP CAP SHEET FR

A premium self-adhering polyester reinforced modified bitumen membrane manufactured to meet the toughest industry and code requirements. SA-APP Cap Sheet & SA-APP Cap Sheet FR are manufactured using Adeso® dual-compound technology, whereby the membrane consists of an Atactic Polypropylene (APP) modified asphalt compound on top and a pressure-sensitive adhesive compound on the bottom. The adhesive is covered with a split release liner. SA-APP Cap Sheet FR is finished with granules on the top surface, and features SEALLap® ULTRA side lap with self-adhesive compound for an instant bond, tested stronger than all other application methods and FASTLap®, granule-free end lap. Each of these patented features provide for greater ease of application, as well as improved long-term performance. SA-APP Cap Sheet & Cap Sheet FR are also used as a flashing membrane in all applicable specifications.



D6222 TYPE I, GRADE G  
D1970

Various code approvals are available including: Factory Mutual, Underwriters Laboratories, Miami-Dade, Florida Product Approval, ICC-ESR and Texas Department of Insurance. Contact MuleHide Technical Department for specific ratings or refer to page 13.



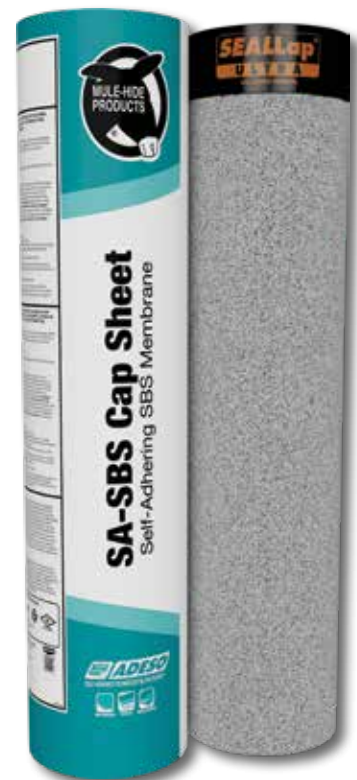
## SA-SBS CAP SHEET & SA-SBS CAP SHEET FR

A premium self-adhering polyester reinforced modified bitumen membrane manufactured to meet the toughest industry and code requirements. SA-SBS Cap Sheet & Cap Sheet FR are manufactured using Adeso® dual-compound technology, whereby the membrane consists of a Styrene Butadiene Styrene (SBS) modified asphalt compound on top and a pressure-sensitive adhesive compound on the bottom. The adhesive is covered with a split release liner. SA-SBS Cap Sheet & Cap Sheet FR are finished with granules on the top surface and features SEALLap® ULTRA side lap with self-adhesive compound for an instant bond, tested stronger than all other application methods and FASTLap®, granule-free end lap. Each of these patented features provide for greater ease of application, as well as improved long-term performance. SA-SBS Cap Sheet & Cap Sheet FR are also used as a flashing membrane in all applicable specifications.



D6164 TYPE I, GRADE G  
D1970

Various code approvals are available including: Factory Mutual, Underwriters Laboratories, Miami-Dade, Florida Product Approval, ICC-ESR and Texas Department of Insurance. Contact MuleHide Technical Department for specific ratings refer to page 13.



# SELF-ADHERING CAP SHEETS

## SA-APP KOOLCAP® AND SA-APP KOOLCAP® FR

A highly-reflective, self-adhered APP modified bitumen roofing membrane manufactured using Adeso® dual-compound technology, whereby the membrane consists of an APP (atactic polypropylene) modified asphalt compound on top and a pressure-sensitive adhesive compound on the bottom. SA-APP KoolCap® & SA-APP KoolCap® FR features CURE Technology®, an innovative thin film technology attributing to exceptional granule retention, stain and discoloration resistance and UV stabilization for long-term durability and performance. CURE is solvent-free and environmentally friendly. SA-APP KoolCap® & SA-APP KoolCap® FR have a highly-reflective granule surface which meets or exceeds most standards for “Cool Roofing” and has a SRI of 96.



### MORE INFO



D6222 TYPE I

Various code approvals are available including: Factory Mutual, Underwriters Laboratories, Miami-Dade, Florida Product Approval, ICC-ESR and Texas Department of Insurance. Contact MuleHide Technical Department for specific ratings refer to page 13.



APPLYING PRESSURE WITH A 75 LB.  
ROLLER ON SA APP KOOLCAP.

# SELF-ADHERING BASE SHEETS

## SA BASE SHEET & SA BASE SHEET FR

A premium self-adhered, fiberglass-reinforced, modified bitumen membrane (with fire retardant additives)\* manufactured to meet the toughest industry and code requirements. SA Base Sheet & SA Base Sheet FR are manufactured using Adeso® dual-compound technology, where the membrane consists of Styrene Butadiene Styrene (SBS) modified asphalt compound on top and a pressure-sensitive adhesive compound on the bottom. The adhesive is covered with a split release liner. SA Base Sheet & Base Sheet FR are finished with a polyolefin film with printed lay lines on the top surface.

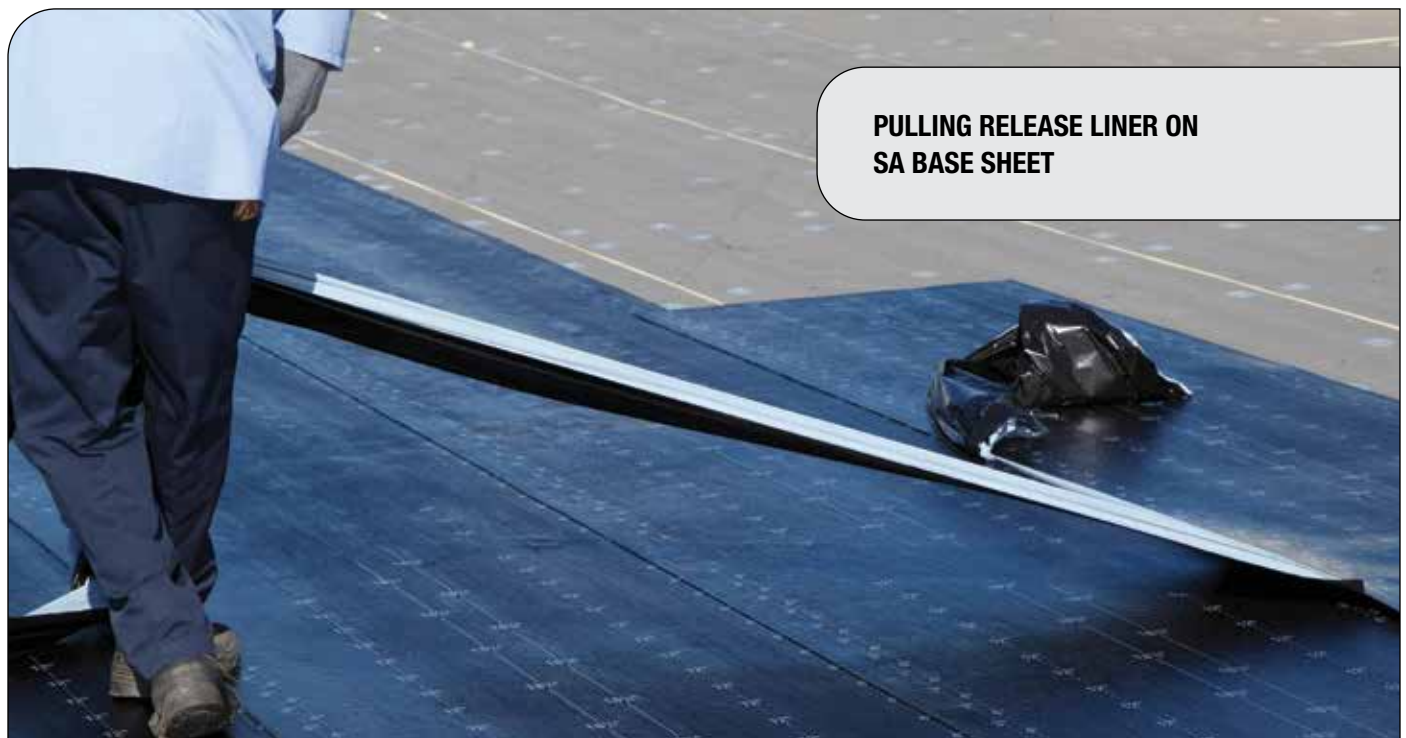


D6163 TYPE I, GRADE S  
D1970

Various code approvals are available including: Factory Mutual, Underwriters Laboratories, Miami-Dade, Florida Product Approval, ICC-ESR and Texas Department of Insurance. Contact MuleHide Technical Department for specific ratings refer to page 13.



\* SA Base Sheet FR only



PULLING RELEASE LINER ON  
SA BASE SHEET



## APP TORCH G PREMIER & APP TORCH G FR PREMIER

A premium, polyester-reinforced APP modified bitumen roofing membrane (with fire retardant additives)\* designed for heat-welded (torch) applications. Constructed with premium Atactic Polypropylene resins and incorporating superior polyester reinforcing, APP Torch G Premier & APP Torch G FR Premier provide an easy-to-install, long-term weathering, durable roofing solution. APP Torch G Premier & APP Torch G FR Premier have a granulated surface available in several colors, a polyolefin backing and features FASTLap® technology for granular-free end laps. FASTLap provides greater ease and speed of application as well as improved long-term weathering performance. APP Torch G Premier & APP Torch G FR Premier exceed all minimum ASTM standards for tensile strength, puncture resistance and flexibility.



G: D6222 TYPE I  
G FR: D6222 TYPE I, GRADE G

**Various code approvals are available including:** Factory Mutual, Underwriters Laboratories, Miami-Dade, Florida Product Approval, ICC-ESR and Texas Department of Insurance. Contact MuleHide Technical Department for specific ratings refer to page 13.



\*APP Torch G FR Premier only

## APP TORCH S PREMIER

A premium, polyester-reinforced APP modified bitumen roofing membrane designed for heat-welded (torch) applications. Constructed with premium Atactic Polypropylene resins and incorporating superior polyester reinforcing, APP Torch S Premier provides an easy to install, long-term weathering, durable roofing solution. APP Torch S has a sanded surface and a polyolefin backing. APP Torch S Premier exceeds all minimum ASTM standards for tensile strength, puncture resistance and flexibility.



D6222 TYPE I, GRADE S

**Various code approvals are available including:** Factory Mutual, Underwriters Laboratories, Miami-Dade, Florida Product Approval, ICC-ESR and Texas Department of Insurance. Contact MuleHide Technical Department for specific ratings refer to page 13.



## APP TORCH BASE PREMIER

An APP modified bitumen roofing membrane base sheet, reinforced with a fiberglass mat, saturated and coated with a polymerized asphaltic compound having exceptional waterproofing and weatherability characteristics. The top and bottom surfaces of APP Torch Base Premier are finished with a poly film.



D6509 TYPE I

**Various code approvals are available including:** Factory Mutual, Underwriters Laboratories, Miami-Dade, Florida Product Approval, ICC-ESR and Texas Department of Insurance. Contact MuleHide Technical Department for specific ratings refer to page 13.



## APP TORCH G KOOLCAP® & APP TORCH G FR KOOLCAP®

A premium, highly-reflective, polyester-reinforced APP modified bitumen roofing membrane manufactured for heat-welded (torch) applications, with a burn-off bottom layer film. APP Torch G KoolCap & APP Torch G FR KoolCap has a highly-reflective granule surface which meets or exceeds most standards for “Cool Roofing” and has a SRI of 96.

Constructed with premium APP resins and incorporating a non-woven polyester reinforcement, APP Torch G KoolCap & APP Torch G FR KoolCap provide an exceptionally durable roofing product with exceptional flexibility and dimensional stability. APP Torch G KoolCap & APP Torch G FR KoolCap feature CURE Technology®, an innovative thin film technology attributing to exceptional granule retention, stain and discoloration resistance and UV stabilization for long-term durability and performance. CURE is solvent-free and environmentally friendly. APP Torch G KoolCap & APP Torch G FR KoolCap also feature FASTLap® technology for granule-free end laps. The membrane is solvent-free and environmentally friendly.



D6222 TYPE I

**Various code approvals are available including:** Factory Mutual, Underwriters Laboratories, Miami-Dade, Florida Product Approval, ICC-ESR and Texas Department of Insurance. Contact MuleHide Technical Department for specific ratings refer to page 13.



## APP TORCH G

A polyester-reinforced APP modified bitumen roofing membrane designed for heat-welded (torch) applications. Constructed with premium Atactic Polypropylene resins and incorporating superior polyester reinforcement, APP Torch G provides an exceptionally durable roofing product which is easy to install and will provide long-term weathering. APP Torch G has a granular surface that is available in several colors, and a polyolefin backing. APP Torch G exceeds all minimum ASTM standards for tensile strength, puncture resistance and flexibility.



D6222 TYPE I

**Various code approvals are available including:** Factory Mutual, Underwriters Laboratories, Miami-Dade, Florida Product Approval, ICC-ESR and Texas Department of Insurance. Contact MuleHide Technical Department for specific ratings refer to page 13.



Buff



Black



Chestnut



Gray Slate



Oak



Heather Blend



Red Blend



Pine Green



Weatherwood



White



## APP TORCH BASE/CAP S

A polyester-reinforced APP modified bitumen roofing membrane designed for heat-welded (torch) applications. Constructed with premium Atactic Polypropylene resins and incorporating superior polyester reinforcing, APP Torch Base/Cap S provides an exceptionally durable roofing product which is easy to install and will provide long-term weathering. APP Torch Base/Cap S has a smooth surface and a polyolefin backing. APP Torch Base/Cap S exceeds all minimum ASTM standards for tensile strength, puncture resistance and flexibility.



D6222 TYPE I

**Various code approvals are available including:** Factory Mutual, Underwriters Laboratories, Miami-Dade, Florida Product Approval, ICC-ESR and Texas Department of Insurance. Contact MuleHide Technical Department for specific ratings refer to page 13.



# BASE SHEETS (SECUREMENT PLIES)

## NAIL BASE

A premium fiberglass-reinforced, SBS (elastomeric) modified bitumen membrane manufactured to meet the toughest industry and code requirements. Nail Base is manufactured with a Styrene Butadiene Styrene (SBS) modified asphalt compound that exhibits exceptional waterproofing and weathering properties. Nail Base is finished with a polyolefin film with printed lay lines on the top surface.



**Various code approvals are available including:** Factory Mutual, Underwriters Laboratories, Miami-Dade, Florida Product Approval, ICC-ESR and Texas Department of Insurance. Contact MuleHide Technical Department for specific ratings refer to page 13.



## G2 BASE

A fiberglass mat coated with an oxidized asphalt blend, which provide enhanced weathering and aging characteristics. G2 Base is designed as a base sheet for MuleHide torch applied modified roofing applications. It may also be used in built-up roofing applications. It provides great tear and pull through resistance.



**Various code approvals are available including:** Factory Mutual, Underwriters Laboratories, Miami-Dade, Florida Product Approval, ICC-ESR and Texas Department of Insurance. Contact MuleHide Technical Department for specific ratings refer to page 13.



# ADHESIVES, SEALANTS, COATINGS & ACCESSORIES



## KOOLCAP® TOUCH UP

KoolCap® Touch Up is a highly-reflective coating specially designed for use with our KoolCap® G membranes. It is bright white in color and is designed to help extend the life and enhance the performance of KoolCap® roofing system. KoolCap® Touch Up is a water-based product and environmentally friendly.



## 420 MOD BIT ADHESIVE - BRUSH GRADE

A brush-grade select formulation for use as a cold-applied bonding agent for SBS modified bitumen base sheets and SBS modified bitumen cap sheets.

*Miami Dade County Approved.  
Meets ASTM D3019.*

Product Code	Description	Coverage	Shelf Life
09MHKCTU1	KoolCap Touch Up	500 sq. ft. per can	1.5 years

Product Code	Description	Coverage	Shelf Life
16MH4205	5-Gallon Brush Grade	1-1.5-Gallon per sq.	18 Months



## MOD BIT GRANULES

High-quality mineral granules used on mineral-surfaced membrane products. Tough, dense, ceramic-coated particles are weather and UV resistant. Composed of a granite-like mineral permanently coated with various pigments to match MuleHide Mod Bit Cap Sheet products.



## 421 MOD BIT ADHESIVE - TROWEL GRADE

A high-quality trowel-grade formulation for use as a cold-applied bonding agent for SBS modified bitumen roof systems. Heavy, trowel-grade consistency makes this product ideal for flashing details, attachment of membrane to steep slopes and parapet walls and a variety of waterproofing repairs, especially at moving joints where its flexibility and elasticity make it superior to standard plastic cements. In addition, the formulation is non-destructive to asphalt-based roofing membranes.

*Miami Dade County Approved.  
Meets ASTM D4586, D3409.*

Product Code	Granule Colors	Description
09MHGRWH	White	5-Gallon Pail
09MHGRBK	Black	
09MHGRWW	Weatherwood	
09MHGRBU	Buff	
09MHGRCH	Chestnut	
09MHGROA	Oak	
09MHGRHB	Heather Blend	
09MHGRSL	Gray Slate	
09MHGRPG	Pine Green	
09MHGRRB	Red Blend	
09MHGRGR	Green (Special Order)	
09MHGRRD	Red (Special Order)	

Product Code	Description	Coverage	Shelf Life
16MH4213	3-Gallon Trowel Grade	8-Gallon per sq.	2 years
16MH4215	5-Gallon Trowel Grade		



## 121 ASPHALT PRIMER









A general-purpose penetrating asphalt primer used to promote adhesion prior to the application of hot-mopped, cold-applied and self-adhesive membrane systems, as well as roof cements, mastics and asphalt-based adhesives.

*Miami Dade County Approved.  
Meets ASTM D41.*

Product Code	Description	Coverage	Shelf Life
16MH12114	14 oz can (30/carton)	30 sq.ft. per can	2 years
16MH1215	5-Gallon Pail	1-Gallon per	
16MH12150	50-Gallon Drum	100 sq. ft.	



# PRODUCT CODE APPROVALS

Product Name								
SA-APP Cap Sheet	✓	✓	✓	✓	✓	✓	✓	✓
SA-APP Cap Sheet FR	✓	✓	✓	✓	✓	✓	✓	✓
SA-SBS Cap Sheet	✓	✓	✓	✓	✓	✓	✓	✓
SA-SBS Cap Sheet FR	✓	✓	✓	✓	✓	✓	✓	✓
SA-APP KoolCap®	✓		✓	✓	✓	✓	✓	✓
SA-APP KoolCap® FR	✓	✓	✓	✓	✓	✓	✓	✓
SA Base Sheet	✓	✓	✓	✓	✓	✓	✓	
SA Base Sheet FR	✓	✓	✓	✓	✓	✓	✓	
APP Torch G Premier	✓	✓	✓	✓	✓	✓	✓	✓
APP Torch G FR Premier	✓	✓	✓	✓	✓	✓	✓	✓
APP Torch S Premier	✓	✓	✓	✓	✓	✓	✓	
APP Torch Base Premier	✓		✓	✓	✓	✓	✓	
APP Torch G KoolCap®	✓		✓	✓	✓	✓	✓	✓
APP Torch G FR KoolCap®	✓	✓	✓	✓	✓	✓	✓	✓
APP Torch Base/Cap S	✓				✓	✓	✓	
APP Torch G	✓	✓		✓	✓	✓	✓	
G2 Base	✓	✓	✓	✓	✓	✓	✓	
Nail Base	✓	✓	✓	✓	✓	✓	✓	

## WARRANTY PROGRAM

MuleHide offers a variety of warranties for commercial and residential projects including material and system warranties. System warranties are available for commercial projects when installed in strict compliance with MuleHide's specifications by a MuleHide Warranty Eligible Contractor. Residential projects may qualify for material warranties. Complete warranty information and requirements for the various warranties available may be found on the MuleHide website at [www.mulehide.com](http://www.mulehide.com) or by contacting MuleHide at 800-786-1492.

- **APP Torch Modified Bitumen:**

- Membrane-only warranties in 10-, 12-, 15-, and 20-year terms.
- No-dollar-limit (NDL) system warranties in 10-, 12-, 15-, and 20-year terms. (*Commercial projects only*)

- **Self-Adhering Modified Bitumen:**

- Membrane-only warranties in 12-, 15-, and 20-year terms.
- No-dollar-limit (NDL) system warranties in 10-, 12-, 15-, and 20-year terms. (*Commercial projects only*)



**TORCHING THE END LAP ON  
APP TORCH PREMIER**

# PRODUCT CHART

PRODUCT NAME	DESCRIPTION	COVERAGE	WEIGHT	CARTON
<b>BASE SHEETS</b>				
SA Base Sheet	Self-Adhesive SBS Base Sheet Inter-Ply with Polyolefin Film Surface Glass Fiber Mat ASTM D6163 Type I, Grade S / D1970	200 ft <sup>2</sup>	95 lbs.	2 Sq. Roll
SA Base Sheet FR	Self-Adhesive SBS Fire-Retardant Base Sheet Inter-Ply with Polyolefin Film Surface Glass Fiber Mat ASTM D6163 Type I, Grade S / D1970	200 ft <sup>2</sup>	94 lbs.	2 Sq. Roll
Nail Base	SBS Base Sheet Polyfilm Top Sand Bottom Glass Fiber Mat ASTM D6163 Type I	200 ft <sup>2</sup>	106 lbs.	2 Sq. Roll
APP Torch Base Premier	Fiberglass Mat Saturated and Coated with a Polymerized Asphalt Compound ASTM D6509 Type I	200 ft <sup>2</sup>	90 lbs.	2 Sq. Roll
APP Torch Base/Cap S	Polyester Reinforcing Constructed with Premium Atactic Polypropylene Resins ASTM D6222 Type I	200 ft <sup>2</sup>	90 lbs.	2 Sq. Roll
<b>TORCH CAP SHEETS</b>				
APP Torch G Premier	ASTM D6222 Type I	100 ft <sup>2</sup>	110 lbs.	1 Sq. Roll
APP Torch G FR Premier	ASTM D6222 Type I, Grade G	100 ft	110 lbs.	1 Sq. Roll
APP Torch S Premier	APP Non-Granular (Smooth) Surface ASTM D6222 Type I, Grade S	100 ft <sup>2</sup>	89 lbs.	1 Sq. Roll
App Torch G KoolCap®	ASTM D6222 Type I, Grade G	100 ft <sup>2</sup>	110 lbs.	1 Sq. Roll
APP Torch G FR KoolCap®	ASTM D6222 Type I, Grade G	100 ft <sup>2</sup>	117 lbs.	1 Sq. Roll
APP Torch G	APP Granular Surface Non-Woven Polyester Mat ASTM D6222 Type I	100 ft <sup>2</sup>	100 lbs.	1 Sq. Roll
<b>SELF-ADHERING CAP SHEETS</b>				
SA-APP Cap Sheet	APP Granular Surface Non-Woven Polyester Mat ASTM D6222 Type I, Grade G / D1970	100ft <sup>2</sup>	89 lbs.	1 Sq. Roll
SA-APP Cap Sheet FR	APP Fire-Retardant Granular Surface Non-Woven Polyester Mat ASTM D6222 Type I, Grade G / D1970	100 ft <sup>2</sup>	89 lbs.	1 Sq. Roll
SA-SBS Cap Sheet	SBS Granular Surface Non-Woven Fiberglass Mat ASTM D6164 Type I, Grade G / D1970	100 ft <sup>2</sup>	84 lbs.	1 Sq. Roll
SA-SBS Cap Sheet FR	SBS Fire-Retardant Granular Surface Non-Woven Fiberglass Mat ASTM D6164 Type I, Grade G / D1970	100 ft <sup>2</sup>	84 lbs.	1 Sq. Roll
SA-APP KoolCap®	APP Non-Woven Polyester Mat ASTM D6222 Type I	100 ft <sup>2</sup>	90 lbs.	1 Sq. Roll
SA-APP KoolCap® FR	APP Fire-Retardant Non-Woven Polyester Mat ASTM D6222 Type I	100 ft <sup>2</sup>	90 lbs.	1 Sq. Roll



*"The name trusted in roofing since 1906"*

---

**Customer Line: 800-786-1492 • [www.mulehide.com](http://www.mulehide.com)**

---



The information herein should not be considered all-inclusive and should always be accompanied by a review of the Mulehide specifications and guidelines and good application practices.

This information herein is based upon data and knowledge considered to be true and accurate at the time of printing and is provided for the reader's consideration, investigation and verification. No statement made by anyone may supersede this information, except when done in writing by Mule-Hide Products Co., Inc. ("MuleHide") MuleHide does not warrant any results to be obtained. Statements concerning possible use of MuleHide products are made without knowledge of your particular roof and such an application may not be fit for your particular purpose. MuleHide DISCLAIMS ALL WARRANTIES, INCLUDING THE IMPLIED WARRANTY OF MERCHANTABILITY AND FITNESS FOR A PARTICULAR PURPOSE, except written warranties attached to MuleHide and written warranties signed by an officer of MuleHide..

Visit the MuleHide website at [www.mulehide.com](http://www.mulehide.com) prior to any installation for updated technical specifications and details. MuleHide is a U.S. registered trademark. Kynar is wholly owned registered trademark of Arkema Inc. All rights reserved.