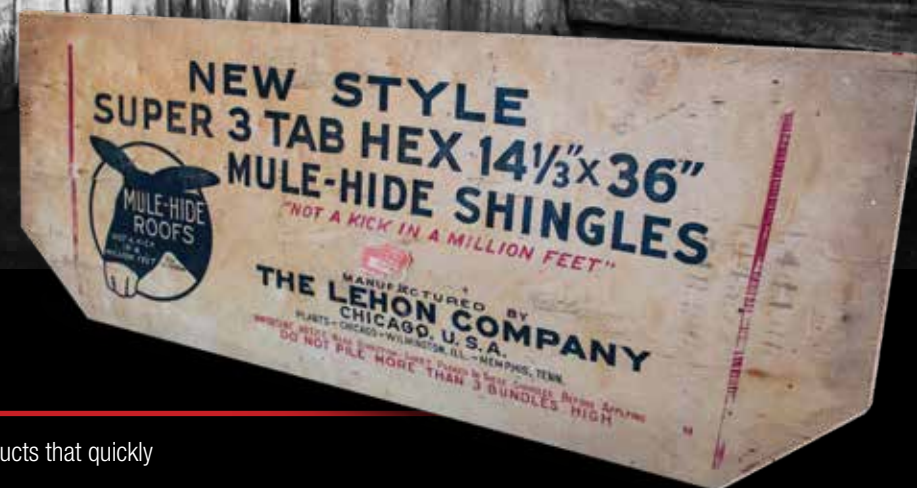




*"The name trusted in roofing
since 1906"*

mulehide.com





THE 1906 BRAND

The original Mule-Hide trade name was registered in 1906. Mule-Hide manufactured top-quality roofing products that quickly gained a reputation for long-lasting performance.

Throughout the years, the name associated with industry-leading residential shingles transitioned into a resource devoted to commercial products, specializing in single-ply installations.

Today, MuleHide keeps the tradition alive by offering low-slope roofing solutions for every type of building.



THE EXPERIENCE

- **PRODUCTS**

Every roof has unique design and performance requirements. MuleHide offers roofing solutions from a temporary emergency repair, to a fully warranted system. All MuleHide products are manufactured under strict quality control and are available through the largest nationwide distribution channel.

- **CONTRACTORS**

Selecting the right contractor is the first step in installing a weather-tested roof. MuleHide offers a nationwide network of Warranty Eligible Contractors who offer various types of roofing systems and repair solutions.

- **TERRITORY MANAGERS**

Strategically located throughout the country, MuleHide territory managers are on-hand to help when critical questions arise. They can assist in building relationships with contractors, owners, design professionals and distribution partners.

- **TECHNICAL SUPPORT**

A dedicated technical team is available to offer assistance in system selection, installation practices, uplift and fire resistance ratings.

- **PROTECTION**

MuleHide offers a wide range of warranties for qualifying commercial projects.

All MuleHide single-ply membranes meet or exceed ASTM performance standards. UL & FM listed assemblies are available.



**TIME-TESTED.
WEATHER-TESTED.**

EPDM

Known for low-maintenance and weatherability, EPDM (ethylene propylene diene monomer) is the optimal choice in many geographies. In northern climates, black EPDM membrane harnesses solar energy, equating to reduced heating costs in the winter.

- Easy installation
- Requires no special installation tools or complex equipment
- Options like pre-taped membranes and pressure-sensitive accessories increase installation speed

TPO

Thermoplastic polyolefin (TPO) is the fastest-growing segment of the commercial roofing industry. In southern climates, TPO is effective where cooling costs significantly outweigh heating costs.

- Cool Roof Rating Council (CRRC®) certified
- Leads the industry in single-ply membrane reflectivity
- Long-term reductions in cooling costs

PVC

Polyvinyl Chloride (PVC) is a trusted membrane with decades of proven performance in Europe and North America. Like TPO, it also offers the potential for decreased cooling costs.

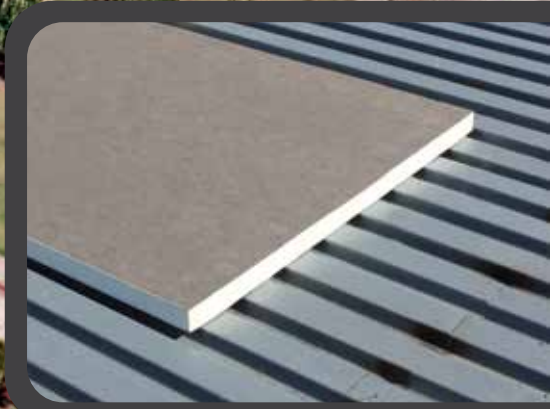
- Cool Roof Rating Council (CRRC®) certified
- Excellent resistance to rooftop chemicals including acid, oil and grease
- Excellent fire resistance

FLEECE BACK

PVC KEE HP, PVC and TPO Fleece Back membranes offer superior puncture resistance and increased durability. PVC/PVC KEE HP Fleece Back is available in 50-, 60- or 80-mil thicknesses, and TPO Fleece Back is available with 45-, 60- or 80-mil laminated to a strong 55-mil polyester fleece.

- Fleece Back membranes applied with Helix Low-Rise Adhesive create enhanced wind uplift resistance as well as hail and puncture resistance





INSULATION

Substantially lower energy costs throughout the life of the roof by incorporating insulation into the roof design. Polyisocyanurate foam (Poly ISO) attaches to the roof deck with plates and fasteners or Helix, or Helix Max Low-Rise Adhesive.

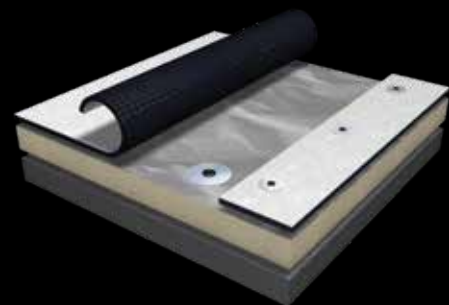
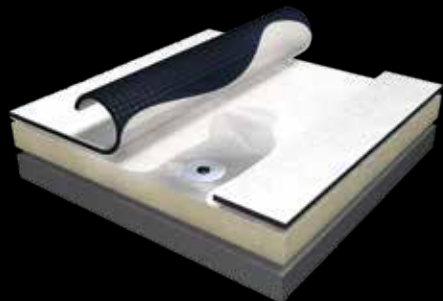
- Exceptional R-value
- Compatible with all roof systems
- Strategically located shipping points
- Tapered Poly ISO creates slope for rooftop drains

SYSTEM OPTIONS

Three installation methods are available depending on building design and performance requirements—including location, climate, wind and height:

FULLY ADHERED

Glued

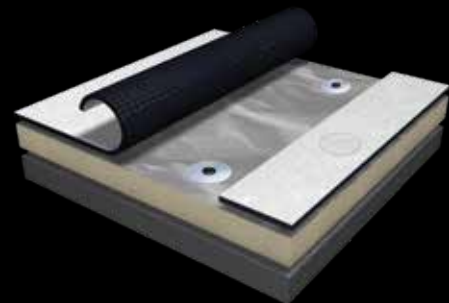
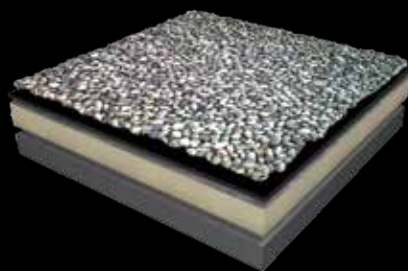


MECHANICALLY ATTACHED

Fastened

BALLASTED

Weighted



INDUCTION WELDED

Fastened





FULLY ADHERED

Membranes in a fully adhered system are installed with adhesives — including bonding adhesive with low-VOC and water-based formulas.

- Maximum wind uplift protection
- Exclusive, two-part Helix® Max Low-Rise Adhesive offers increased hail resistance and provides a non-penetrating attachment method
- Best choice for irregular-shaped roofs and roofs with limited load-bearing capacity

MECHANICALLY ATTACHED

Mechanically fastened roof systems are held in place by concealed plates and fasteners secured through the membrane and into the deck.

- Easy to install and maintain
- Pre-assembled plates and fasteners increase installation speed, decreasing labor cost
- Ideal choice for moderate wind areas

BALLASTED

With quick and uncomplicated installation, ballasted systems feature a loose-laid membrane covered and held in place by stone or concrete pavers that protect the waterproofing layer.

- Durable against UV rays and hail
- Recyclable due to lack of adhesives
- Practical choice for large-scale structures

INDUCTION WELDED

Induction welded roof systems secure the roof insulation and membrane in place with adhesive coated plates that are induction welded to the underside of the membrane.

- Fast to layout and install
- Applicable with TPO, PVC, and KEE HP PVC smooth backed (Non-Fleece) membranes
- Adhesive coated plates do not penetrate the membrane

EPDM

The foundation of the single-ply roofing industry, EPDM has a proven track record for more than 60 years.

- Eliminates excessive weight to the roof deck
- Excellent UV resistance
- Suited for colder climates
- Wide sheets create fewer seams
- Color options that meet CRRC® certified

STANDARD EPDM

- Black, non-reinforced
- Flexible and dimensionally stable even in very cold conditions
- Ideal for fully adhered and ballasted systems

GRAY EPDM

- Ideal choice where heating and cooling costs are more balanced
- Less glare than white membrane while still providing solar reflectance
- CRRC® certified

REINFORCED

- Available in white and black
- Reinforced with tough polyester fabric for superior fatigue, tear and puncture resistance
- Ideal for mechanically attached systems

WHITE-ON-BLACK

- Reflects sunlight and cools building interior
- Available in standard and reinforced
- CRRC® certified

SELF-ADHERED

- Available in black and white on black
- Factory-controlled production ensures reliable seaming with greater peel and shear strength
- Eliminates inconsistencies encountered on site location
- Ensures consistent placement of the tape to maximize the splice area by controlling the placement
- Reduces materials to load on roof – plus less waste and disposal



Membrane Thickness

45-Mil

60-Mil

75-Mil

90-Mil





TPO

The cost-effective white roof reflects up to 78 percent of the sun's rays, reducing cooling costs.

- Heat-weld seams form a permanent, strong, watertight seal
- Recyclable
- Color options that meet CA Title 24 and CRRC® certified

TPO membranes cover a wide range of low-slope roofing applications, with fully adhered, mechanically attached, induction welded and ballasted options.

STANDARD TPO

- White, gray, tan, rock brown, slate gray, terra cotta, patina green and medium bronze
- Thermoplastic polyolefin-based for superior strength and weatherability
- Lightweight yet highly resistant to tears, impact, punctures and wind uplift
- Reinforced membrane easily handles building thermal expansion and contraction

TPO WITH CLEAN FILM

- Eliminate dirt and scuffs left behind during TPO installation with removable protective film
- Reduce roof glare during installation with no loss of initial reflectivity
- Best choice when water conservation and water containment/runoff regulations impose restrictions on traditional cleaning process

SELF-ADHERED TPO

- Self-adhering TPO contains all the benefits of fully adhered, reinforced TPO with a solvent and odor-free factory-applied adhesive
- Easy, consistent installation—up to 3 to 5 times faster than traditional TPO system



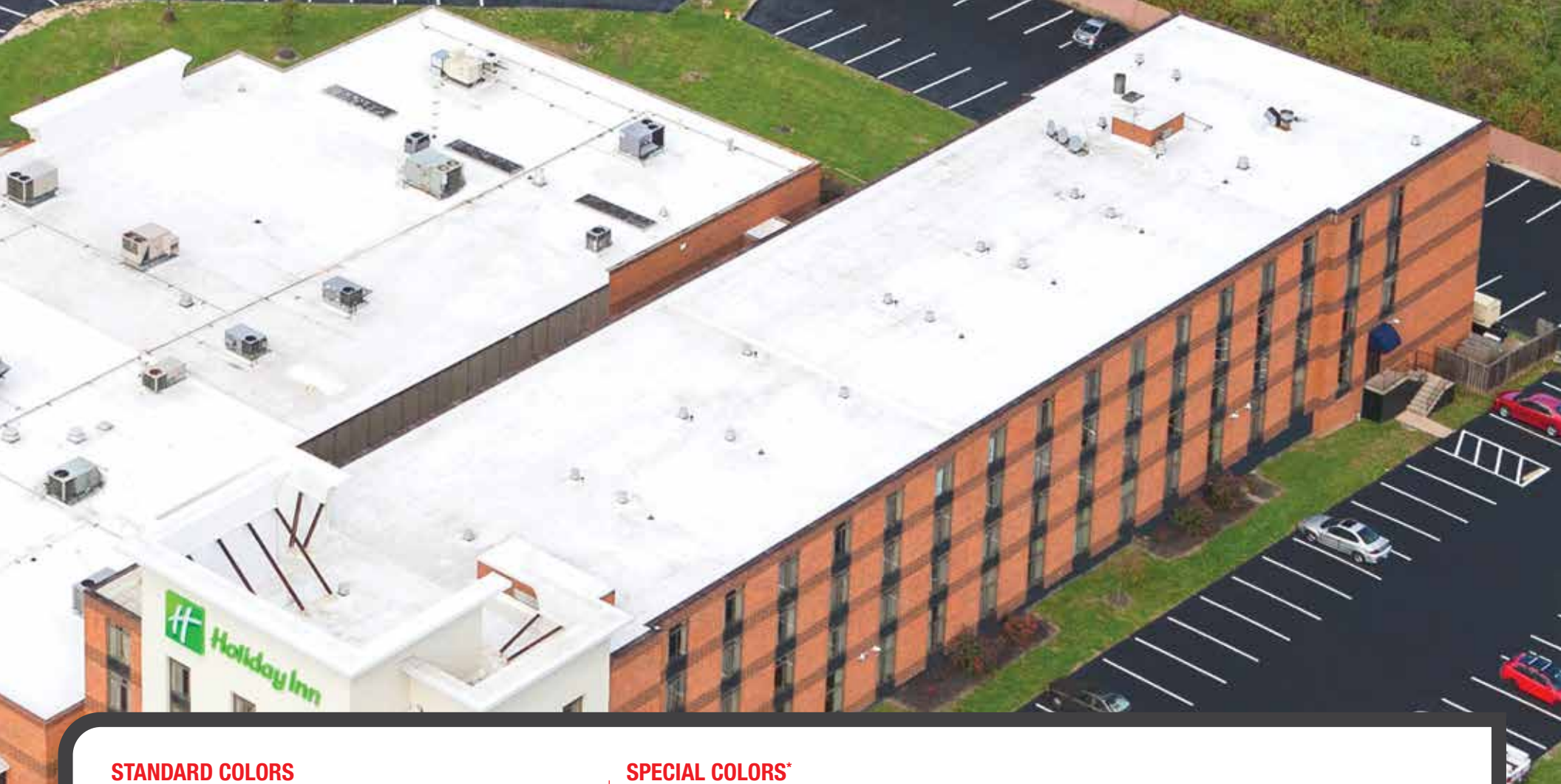
Membrane Thickness

45-Mil

60-Mil

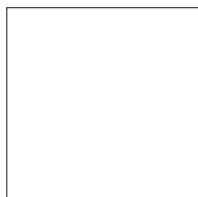
80-Mil



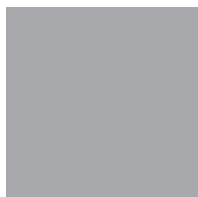


STANDARD COLORS

Many roll sizes and accessories are in stock without minimum order requirements.



White



Gray



Tan

SPECIAL COLORS*

Special colors of reinforced membrane are available in 10' x 100' sheets and non-reinforced flashing available in 24" x 50'. In stock without minimum order requirements.



Rock Brown



Slate Gray



Terra Cotta



Patina Green



Medium Bronze

*Color samples printed here are only approximations. Special Colors have limitations on matching accessories and membranes will fade over time mainly due to the ultraviolet portion of sunlight. Most roof surfaces are exposed to variable sunlight, some areas will be more susceptible to color changes caused by UV fading. Warranties for Special Color membranes do not cover fading of colors. *Special colors are limited to a 20-year warranty.*

PVC

The original white roof. PVC has a proven track record for more than 30 years.

- Superior chemical resistance and remains dimensionally stable over time
- Heat-weld seams form a permanent, strong, watertight seal
- Naturally fire-resistant and excellent UV resistance
- Recyclable
- Reduces cooling costs
- Color options that meet CA Title 24 and CRRC® certified

PVC membranes cover a wide range of low-slope roofing applications, with systems for mechanically attached, fully adhered and induction welded.

STANDARD PVC

Weft-inserted polyester knit fabric engineered to rope up and resist tearing for superior durability with excellent abrasion resistance.

- Variety of adhesives applicable for Adhered Systems (roller applied, spray applied, and water based)
- Greater flexibility than TPO
- Reinforced membrane easily handles building thermal expansion and contraction
- Offered in Fiberglass reinforced scrim options (adhered systems only)

KEE HP

KEE HP membranes are manufactured with DuPont™ Elvaloy® KEE HP polymer, in addition to all the benefits of standard PVC. Additionally, KEE HP provides the following advantages:

- Enhanced chemical resistance, even beyond that of standard PVC membrane
- Best option for chemical resistance projects such as restaurants, laboratories, factories, etc.
- KEE Additive helps to keep the membrane cleaner than standard PVC membrane



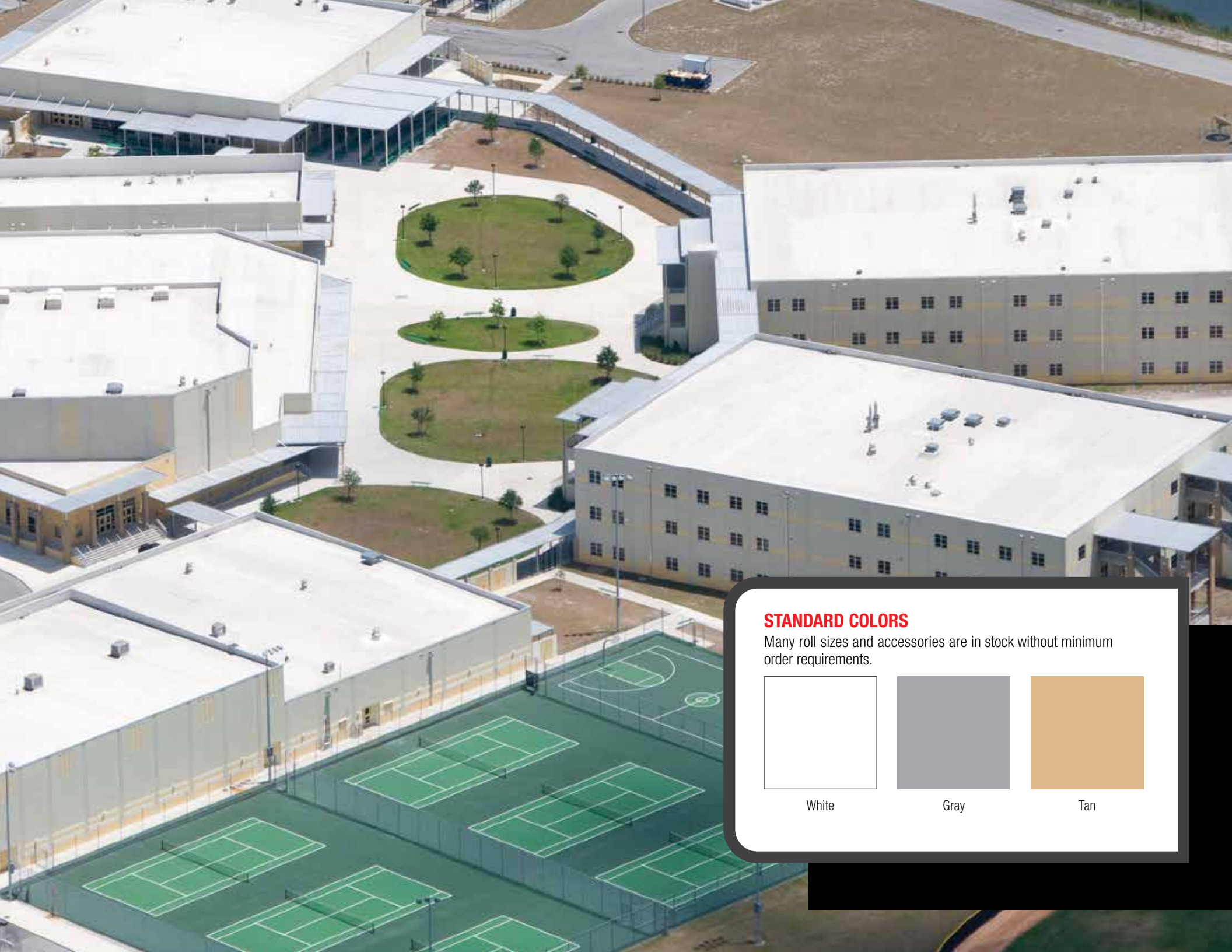
Membrane Thickness

50-Mil

60-Mil

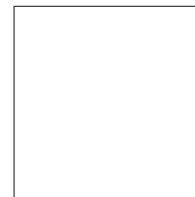
80-Mil





STANDARD COLORS

Many roll sizes and accessories are in stock without minimum order requirements.



White



Gray



Tan



Self-Adhering Mod Bit Base Sheet



MOD BIT

Outstanding long-term performance and durability with color options.

- Thick membrane boasts superior weatherability and puncture resistance
- Minimal disruption to building operations
- Easy to transport and elevator portable
- Quick and clean installation to a wide range of substrates
- Granule surface cap texture for matching shingles

OPTIONS

Self-Adhering Mod Bit (SBS or APP)

- Dual compound reinforced membranes with proprietary adhesive formulation on the bottom allows for a true SBS or APP top weathering surface.
- Patented SEALLap® & FASTLap® engineering provides stronger, more reliable seams and end laps.

APP Torch

- APP Torch Cap Sheet is available in both granulated and smooth along with Self-Adhering Cap Sheet options (APP or SBS).
- APP Torch S (smooth non-granulated) cap sheet.



APP Torch Cap Sheet







COATINGS

There is more to roofing than total replacement. When considering life-cycle costs, it can make sense to prolong the life of the roof with coatings and qualify for a fresh No Dollar Limit warranty on an existing roof.

Reflective roof coatings extend the service life of a mature roofing system. Lasting restoration or repair delays capital expense until an expensive tear-off or overlay is necessary.

- Trusted performance with quick application & clean up using brush, roller or airless sprayer
- Proven, time-tested formulations
- Minimal disruption to the building
- Maximize installed-cost value
- Energy Savings—meets CRRC cool roof requirements by reflecting solar energy and reducing interior building temperatures



ANATOMY OF COATINGS

Roof coating systems are applied in layers to build desired dry mil thickness:

- All installations require proper cleaning prior to application
- Depending on substrate, primer may be required
- Penetrations are individually addressed before base application
- Tinted base eliminates guesswork when applying finish
- With annual maintenance, a properly installed coating system may perform up to 20 years

APPLICATION METHODS:



Airless Sprayer



Roller



Brush

SILICONE COATINGS

Silicone roof coating is a high-solids, single-part roof coating manufactured from durable inorganic silicone resins, reinforcing and reflective pigments. Apply over new spray-applied polyurethane foam, EPDM, TPO, aged PVC, aged acrylic coatings, concrete, asphalt built-up roofs, granulated modified bitumen roofs and metal roofs.

- Provides years of durable, low-maintenance seamless protection—control UV damage, reduce thermal shock, fully adhered system seals off water entry points
- Superior resistance to ponding water—low water absorption outperforms conventional solvent- and water-based protective roof coatings
- Same day recoating possible with quick cure time
- Low-odor—solvent-free formula; VOC compliant throughout North America
- White 100% Silicone Roof Coating improves rooftop air conditioning unit efficiency

Silicone coatings are the best choice when:

- There is ponding water
- A complex roof provides installation issues for a conventional membrane roof
- Two roofing systems exist (eliminating tear-off)

ACRYLIC

Acrylic roof coating is an elastomeric water-base roof coating system or maintenance coating over metal and on smooth asphalt built-up roofs, Mod Bit, EPDM, TPO and PVC.

- Exceptional exterior durability and UV stability
- Specifications for both reinforced and non-reinforced assemblies
- Superior flexibility in low-temperature environments

Acrylic coatings are the best choice:

- On tight budgets
- When there is no ponding water
- Over a metal roof with minimal rust when installation temperatures are above freezing





EXTEND ROOF LIFE

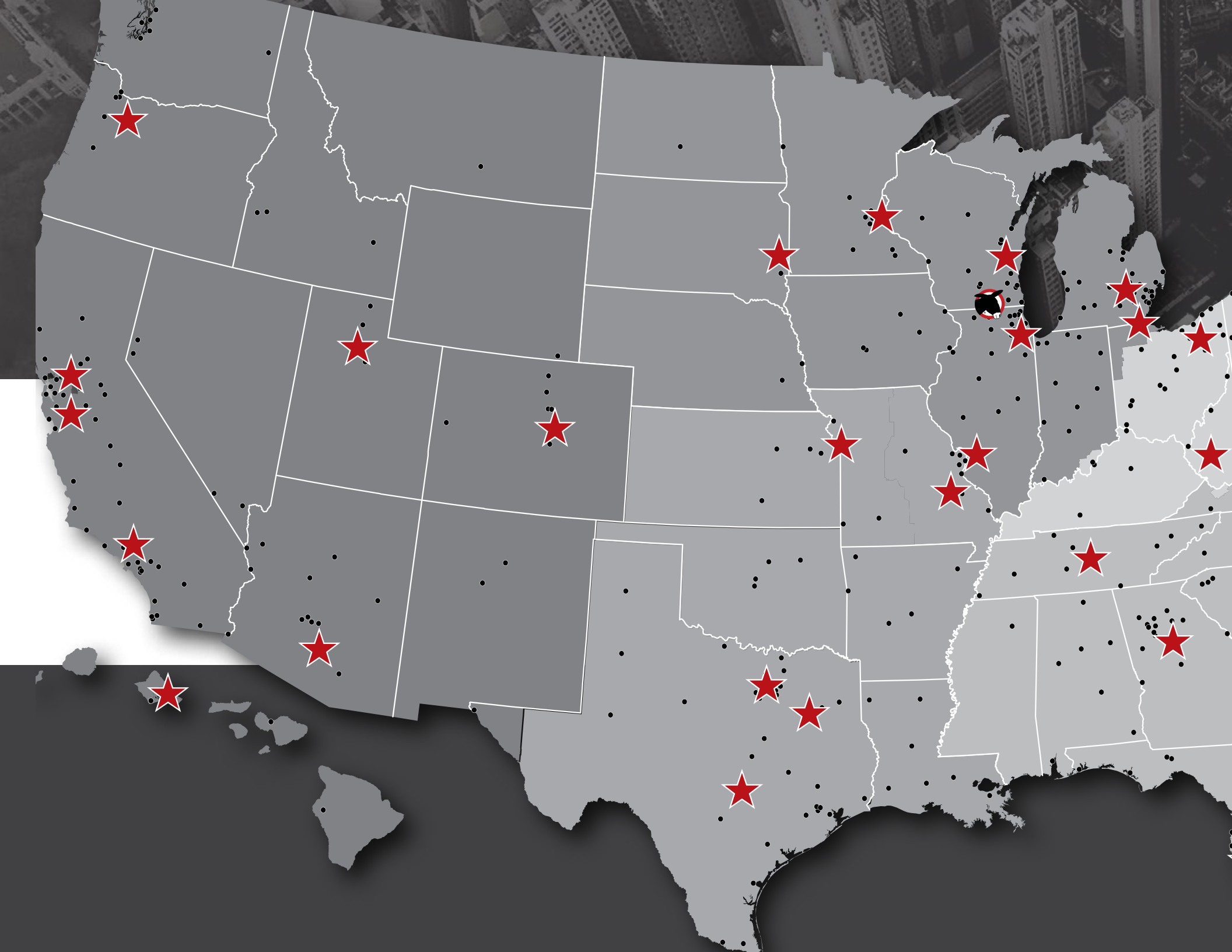


It is important to safeguard a roof investment with a structured, pro-active maintenance and repair program regardless of warranty status. The MuleHide maintenance and repair philosophy makes repairs easier by packaging products in small quantities.

- 25' rolls of popular tape products for EPDM and TPO roofing systems
- Quart and gallon-sized containers of cleaners, primers and adhesives
- Four sealant lines: Urethane, terpolymer, silicone and rubberized asphalt
- Roof drains
- Asphalt-based cements for BUR, modified bitumen and shingle repairs
- Break bulk with individual prefabricated accessory items
- No-Weld TPO repair utilizes tape products removing the need to lug cords and heat guns to the roof







Availability

MuleHide products are distributed nationwide. Reach out to your local territory manager or visit mulehide.com to learn more.

Associations/Organizations



Contact MuleHide for specific product approvals and ratings. Featured industry association/organization logos are U.S. registered trademarks. MuleHide is an AIA registered CES provider.



MuleHide Territory Managers



Distributor Locations



National Support Center

1195 Prince Hall Dr., Beloit, WI 53511
800-786-1492 • mulehide.com



"The name trusted in roofing since 1906"



mulehide.com • 800-786-1492

©2025 MuleHide • Printed in USA • MH LIT# LT.BROCOMP • Rev. 6 6/25