

Helix

Pressurized Tanks and Cartridge - Advantages



The Right Choice for Low-Slope Roofing Products

800-786-1492 • mulehide.com

Rugged • Time-Tested • Weather-Tested

Product Description

Helix Low-Rise Adhesive is a construction-grade, polyurethane foam adhesive designed to adhere approved roof insulations, cover boards and membranes to acceptable substrates. Please refer to the Product Data Sheet (PDS) for a complete list of substrates.

Features and Benefits

- Clean and fast one-step application resulting in significant labor savings
- Fully cured within minutes
- VOC, CFC, HCFC and solvent free
- Remains flexible and absorbs stress
- Superior wind uplift resistance
- Helps eliminate thermal bridging
- One formula for insulation and fleece-back membrane attachment
- Each kit comes with everything needed to apply adhesive

Dispensing Gun for Pressurized Tanks

- Larger flow orifice to improve flow rate and minimize clogging
- Push to connect manifold with NOX[®] valve to eliminate material crossover in gun



- Shower cap for splatter pattern application. Attaches to the end of the static mixer. Splatter application is only for Fleece Back membrane attachment.



- Extension straw for bead/ribbon application



Tank Packaging:



- **Part A Box** includes Part A Tank, gun assembly, petroleum jelly packet, wrench, 1 push-to-connect manifold, 10 tank static mix tips, 10 shower caps, 10 tip extensions and instruction sheet



- **Part B Box** includes Part B Tank

Code Approvals/Compliance:

- FM Approved

Helix

Pressurized Tanks and Cartridge - Advantages



Guidelines

Proper Ratio

The adhesive must be dispensed in a 1:1 ratio.



✓ 1:1 Ratio

Grayish green in color.
Low-rise, tacky foam
after cure.



✗ A-Rich Ratio

Slow to rise/no reaction.
Yellow in color. Brittle foam
after cure.



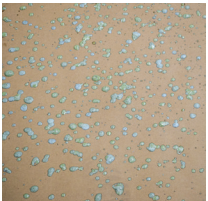
✗ B-Rich Ratio

Very fast reaction/skin
over. Bluish gray in color.
Soft, flexible foam
after cure.

*Beads/ribbons can
be applied with
pressurized tanks
or cartridges.*

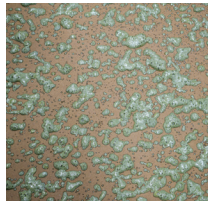
Proper Coverage

Helix Low-Rise Adhesive is applied in 3/4" wide beads/ribbons spaced 4", 6", or 12" on center depending on the requirements of the project. When using pressurized tanks, beads/ribbons are applied using the extension straw attached to the static mixer. When using cartridges, beads/ribbons are applied using only the static mix tip provided with each set. Splatter pattern application, for fleece back membrane attachment only, can be obtained by using the shower cap tip included in the pressurized tank sets. Splatter the deck/substrate with droplets covering 50% of the surface area. Good coverage recommendations are based on a typical application of 3 lbs. of adhesive applied per 100 square feet of area.



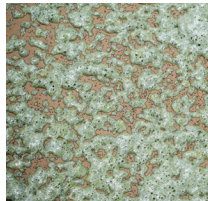
Splatter Pattern

✗ Light Coverage



Splatter Pattern

✓ Good Coverage



Splatter Pattern

✓ More Than Enough Coverage

*Splatter application
cannot be achieved
using cartridges.*

Proper Temperature

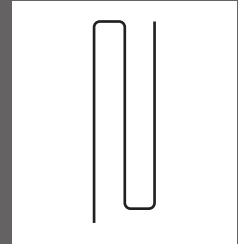
- Substrate and ambient temperature must be above 32°F
- Pressurized tank temperature must be between 70°F - 85°F
- Ideal storage temperature is between 55°F - 90°F

Asphalt and Helix Roofing Adhesive

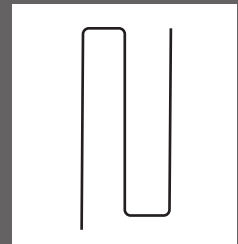
Helix Low-Rise Adhesive does not stick to new, or previously unexposed asphalt that has a shiny appearance. Whenever shiny asphalt is encountered, the asphalt must be primed with AeroWeb prior to the installation of the adhesive. Also, an on-site pull test is recommended.

Note: Tanks require shaking - prior to use, shake both tanks for at least 15-20 seconds, holding the tanks by the handles and using an up and down "pumping" motion. When stopping for more than 2-hours, re-shake the tanks

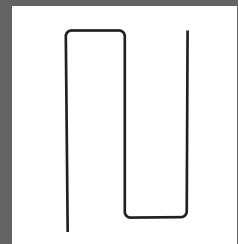
Bead Application



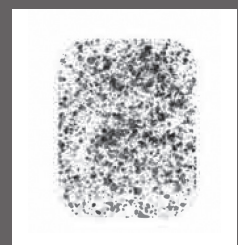
4" On-Center



6" On-Center



12" On-Center



Splatter

Helix

Pressurized Tanks and Cartridge - Advantages



ADHESIVES AND ACCESSORIES				
Part Number	Description	Weight	Packaging	Cartons Per Pallet
08MHHLTNKA	Helix Low-Rise Adhesive Tank - Part A	55 lb	Sold in Pairs (1) Part A Tank with gun/hose assembly, accessory kit, straws & (1) Part B Tank	24 12 cartons of Part A and 12 cartons of Part B
08MHHLTNKB	Helix Low-Rise Adhesive Tank - Part B	49 lb		
08MHHLRACC	Helix Low-Rise Adhesive Cartridge Kit	18 lb	4 Cartridges per Carton with 6 Static Mix Tips	54
TANK ACCESSORIES				
08MHHLRATG	Gun Assembly with 25' Hose	NA	1 Box	NA
08MHHLRATT	10 Static Mixers, 10 Shower Cap Tips, Petroleum Jelly Packet, 1 Push-to-Connect Manifold, 1 NOX Valve, Instruction Sheet	NA	1 Bag	NA
CARTRIDGE ACCESSORIES				
08MHHLRACT	Static Mix Tips	1 lb	1 bag of 10 per box	NA - Bulk



Cartridge Packaging:

- 4-Pack of 1.5 liter cartridges per box, each box includes 6 Static Mix Tips

Code Approvals/Compliance:

- FM Approved

COVERAGE RATES				
Container	Approximate Coverage (SqFt)*			
	4" OC	6" OC	12" OC	Splatter**
Tank	1,165	1,750	3,500	2,400
Cartridge	165	250	500	N/A

*Coverage rates may vary based on factors such as substrate type, bead size, etc.

**Splatter application approved for Fleece Back Membrane attachment only.



Battery operated dispenser for 1.5 liter cartridges. Not sold by MuleHide.

The information herein should not be considered all-inclusive and should always be accompanied by a review of the MuleHide specifications and guidelines and good application practices.

This information herein is based upon data and knowledge considered to be true and accurate at the time of printing and is provided for the reader's consideration, investigation and verification. No statement made by anyone may supersede this information, except when done in writing by Mule-Hide Products Co., Inc. ("MuleHide"). MuleHide does not warrant any results to be obtained. Statements concerning possible use of MuleHide products are made without knowledge of your particular roof and such an application may not be fit for your particular purpose. MULEHIDE DISCLAIMS ALL WARRANTIES, INCLUDING THE IMPLIED WARRANTY OF MERCHANTABILITY AND FITNESS FOR A PARTICULAR PURPOSE, except written warranties attached to MuleHide products and written warranties signed by an officer of MuleHide.

Visit the MuleHide website at www.mulehide.com prior to any installation for updated technical specifications and details. MuleHide is a U.S. registered trademark. All rights reserved. REV 0 1/25