

# Helix

15- and 50-Gallon Drum Advantages  
*Featuring Twist-Lock Connection Technology*



The Right Choice for Low-Slope Roofing Products

800-786-1492 • [mulehide.com](http://mulehide.com)

Rugged • Time-Tested • Weather-Tested

## Description

Helix Low-Rise Adhesive is a VOC-free, construction-grade, two-component polyurethane foam adhesive designed to adhere approved MuleHide roof insulations, cover boards, and fleece-backed single-ply membranes to acceptable substrates.

- For board and insulation attachment, apply in continuous beads.
- For fleece-back membrane attachment, apply either in continuous beads or a splatter-coat.

*Drums of Helix Low-Rise Adhesive deliver significant cost-per-square-foot savings compared to canisters or pressurized tanks.*

*Additionally, Helix Low-Rise Adhesive Drums are designed for convenient and efficient use with the TAP Adhesive Pump.*

*Helix Low-Rise Adhesive Drums are not solely manufactured for use with the TAP Adhesive Pump. Helix Low-Rise Adhesive can also be dispensed with various other equipment sprayers.*

## Connection & Application Components



### Twist-Lock Hose Connection

- A proprietary, quick-connect fitting that locks Helix drums to the TAP Adhesive Pump for fast, leak-free setup.

### TAP Gun Assembly

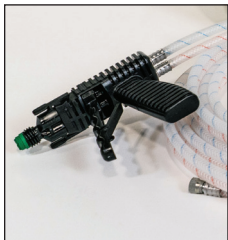
- Configured for both bead/ribbon and splatter application.

### TAP Mix Tip (no shower cap attached)

- Optimized for precise bead/ribbon dispensing.

### TAP Shower Cap Tip

- Clicks onto the TAP Mix Tip to enable splatter-coat application—no air compressor or extra equipment required.



TAP Mix Tip



TAP Shower Cap Tip



TAP Adhesive Pump Equipment as shown with Helix 15-Gallon Adhesive Drums

*The TAP Adhesive Pump and its accessory components are not sold by MuleHide. For additional information or support with the TAP Adhesive pump or its accessory components, contact Hapco Inc. @Hapcoinc.com*

### Helix 15-Gallon Drums (sold in sets)

- Part A: 08MHHLRAPA
- Part B: 08MHHLRAPB

### Helix 50-Gallon Drums (sold in sets)

- Part A: 08MHHLRADA
- Part B: 08MHHLRADB

### Code Approvals/Compliance:

- FM Approved

**Shelf Life:** 18 months

# Helix

## 15- and 50-Gallon Drum Advantages



### Adhesive Application

#### Bead/Ribbon Application

- Apply 3/4"-wide beads or ribbons spaced 4", 6", or 12" on center, per project specifications.
- Suitable for attaching insulation, cover boards, or fleece-backed membranes.

#### Mix Ratio

- Dispense adhesive at a precise 1:1 ratio.



#### ✓ 1:1 Ratio

Grayish green in color.  
Low-rise, tacky foam  
after cure.



#### ✗ A-Rich Ratio

Slow to rise/no reaction.  
Yellow in color. Brittle foam  
after cure.

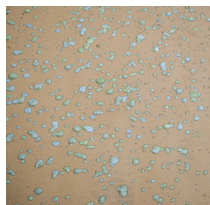


#### ✗ B-Rich Ratio

Very fast reaction/skin  
over. Bluish gray in color.  
Soft, flexible foam  
after cure.

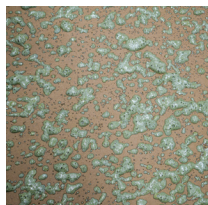
### Splatter Application

- Proper coverage is based on typical application of 3 lb of adhesive per 100 ft<sup>2</sup>, achieving droplet coverage of at least 75% of the surface.
- Maintain a 1:1 mix ratio—properly mixed adhesive exhibits a grayish-green color.
- Use exclusively for fleece-backed membrane attachment.



Splatter Pattern

✗ Light Coverage



Splatter Pattern

✓ Good Coverage



Splatter Pattern

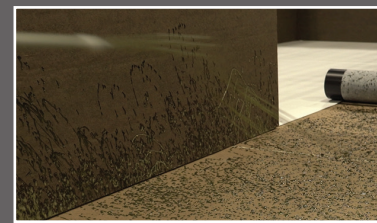
✓ More Than Enough  
Coverage

### Caution: New or Unexposed Asphalt

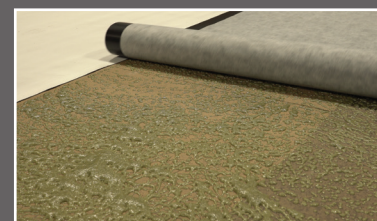
Helix Low-Rise Adhesive does not stick to new, or previously unexposed asphalt that has a shiny appearance. New or unexposed asphalt must be primed with Aeroweb.



Proper string rise.



Splatter application with shower cap  
on end of static tip for drums.



Adhering Fleece Back TPO to  
Helix splatter.



Using 75 lb. roller to secure  
attachment to substrate.

# Helix

## 15- and 50-Gallon Drum Advantages



### 15- AND 50-GALLON ADHESIVE

Part Number	Description	Weight	Packaging	Drums Per Pallet
08MHHLRAPA	Helix Low-Rise Adhesive 15-Gallon Drum, Part A	275 lb.	<b>Sold in Pairs</b> (1) Part A Drum (1) Part B Drum	9 per pallet (All A or all B)
08MHHLRAPB	Helix Low-Rise Adhesive 15-Gallon Drum, Part B			
08MHHLRADA	Helix Low-Rise Adhesive 50-Gallon Drum, Part A	991 lb.	<b>Sold in Pairs</b> (1) Part A Drum (1) Part B Drum	4 per pallet (2 A and 2 B)
08MHHLRADB	Helix Low-Rise Adhesive 50-Gallon Drum, Part B			

### COVERAGE RATES

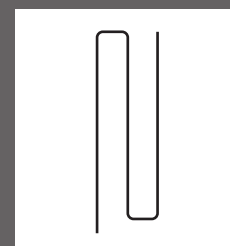
Container	Approximate Coverage (SqFt)*			
	4" OC Ribbon App	6" OC Ribbon App	12" OC Ribbon App	Splatter** 3 lbs of adhesive /100 sq. ft. of area
15-Gallon Drum Set	3,000	4,500	7,500	6,000
50-Gallon Drum Set	10,000	15,000	25,000	20,000

\*Coverage rates may vary based on factors such as substrate type, bead size, etc.

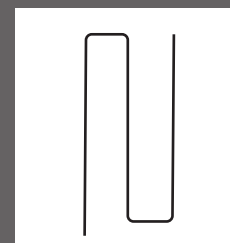
\*\*Splatter application approved for Fleece Back Membrane attachment only.

TAP Adhesive Pump Equipment and Accessories and other equipment sprayers are developed, designed, manufactured, and sold by parties other than MuleHide. Although MuleHide attempts to be as accurate as possible, MuleHide does not warrant any information in this brochure related to TAP Adhesive Pump Equipment and Accessories and equipment sprayers is accurate, complete, current, or error-free. If you purchase any TAP Adhesive Pump Equipment and Accessories or other equipment sprayer, you are purchasing directly from third parties, not from MuleHide. MuleHide is not responsible for examining, supporting, or evaluating, and MuleHide does not warrant, the offerings of any third party. MuleHide does not assume any responsibility or liability for the actions, product, and content of all these and any other third parties. You should carefully review their product warranties, terms of sale, and conditions of use.

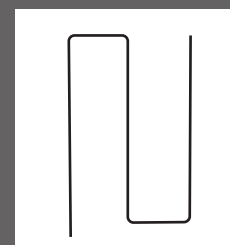
### Bead Application



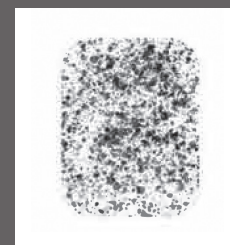
4" On-Center



6" On-Center



12" On-Center



Splatter

The information herein should not be considered all-inclusive and should always be accompanied by a review of the MuleHide specifications and guidelines and good application practices.

This information herein is based upon data and knowledge considered to be true and accurate at the time of printing and is provided for the reader's consideration, investigation and verification. No statement made by anyone may supersede this information, except when done in writing by Mule-Hide Products Co., Inc. ("MuleHide"). MuleHide does not warrant any results to be obtained. Statements concerning possible use of MuleHide products are made without knowledge of your particular roof and such an application may not be fit for your particular purpose. MULEHIDE DISCLAIMS ALL WARRANTIES, INCLUDING THE IMPLIED WARRANTY OF MERCHANTABILITY AND FITNESS FOR A PARTICULAR PURPOSE, except written warranties attached to MuleHide products and written warranties signed by an officer of MuleHide.

Visit the MuleHide website at [www.mulehide.com](http://www.mulehide.com) prior to any installation for updated technical specifications and details. MuleHide is a U.S. registered trademark. All rights reserved. REV 1 12/25