



"The name trusted in roofing since 1906"

SINGLE-PLY ROOFING

ACCESSORIES GUIDE

Product Spotlight



Repair Hero is a solvent-based, fiber-reinforced terpolymer sealant intended for the repair of asphalt, modified bitumen, metal, Kynar®, concrete, TPO, PVC, Elvaloy®/PVC, Hypalon® (CSPE), PIB and EPDM roofs.

Ideal maintenance and repair product for all roofs in all weather

- Extremely strong and elastic with high elongation and tensile strength to enhance performance under conditions that may cause asphalt-based cements to fail
- Can be applied to wet/dry surfaces and installed underwater
- VOC compliant in all states including California

Features and Benefits

- Ideal maintenance and repair product
- Universal adhesion to all roof substrates
- True all-weather repair product
- Wet, dry and underwater repairs
- Excellent adhesion and elongation
- Strong tensile strength
- Non-yellowing – UV stable
- Superior weathering
- No stirring required
- **Will not freeze**
- **Cures in 24-48 hours**
- **Shelf life of 2 years**



Repair Hero
To use: open pail, apply,
close lid and repeat.

Preparation for installing product:



Competitor
To use: open pail, remove
skin, stir for 5 minutes with
specialty mixer, apply, close
lid and repeat.

See page 44

SEAL-FAST® Liqui-Flash

Polyurethane Roofing Sealant

Liqui-Flash

Liqui-Flash is a flashing grade single-component polyurethane roof sealant. It is used in the construction of liquid flashing systems and sealing pitch pockets and pans, metal roof seams and fasteners, inlaid gutters, polyurethane foam, asphalt modified bitumen, PVC and EPDM roofs.

Seal complex details quickly and permanently

- Can be used to seal and flash unusually shaped penetrations
- Ideal for repairing hail damaged polyurethane foam roofs
- Viscous enough to avoid running and drain-out issues encountered with more liquid sealers

Features and Benefits

- Ideal maintenance and repair product
- No fabric reinforcement required
- Reduced labor
- One-step application
- Easy to apply and brush
- Excellent elongation and strong tensile strength
- Non-yellowing – UV stable
- Excellent adhesion to a wide variety of substrates
- 100% solids
- No stirring required
- Shelf life of 2 years



See page 44



TABLE OF CONTENTS



PRODUCT SPOTLIGHT 2-3

EPDM

Membranes	5
Adhesives & Sealants.....	6-7
Seaming	8-9
Flashing	10-11
Accessories	12

TPO

Membranes	13
Adhesives & Sealants.....	14-15
Seaming	16
Flashing	17-19
Colorway	20-21
Accessories	22

PVC

Membranes	23
Adhesives & Sealants.....	24
Sealants & Seaming.....	25
Flashing	26-28
Accessories	29

Mod Bit

Membranes	30-31
Cap Sheet Colors	32
Adhesives & Sealants.....	33

Multi-System Accessories

Fasteners/Plates/Bars.....	34-36
Low-Rise Adhesive	37
Roof Drains.....	38-40
Roof Insulation.....	40
Cover Boards.....	41
Air & Vapor Barrier	41
Edge Metal	42
Caulks & Sealants.....	43-44
ShapeShift Line.....	45
Notes.....	46-47

EPDM

ETHYLENE PROPYLENE DIENE MONOMER

STANDARD BLACK EPDM MEMBRANE (45-Mil & 60-Mil) Used as an elastomeric single-ply roofing membrane for new construction and reroofing applications. May be installed in ballasted and fully adhered roofing systems. Standard Black EPDM Membranes are Fire Retardant (FR) membranes.

FR EPDM MEMBRANE (PRE-CLEANED 60-Mil & 90-Mil) Used as an elastomeric single-ply roofing membrane for new construction and reroofing applications. Pre-cleaned 60-mil and 90-mil membranes are primarily used in fully adhered roofing systems, but can also be ballasted.

STANDARD & FR REINFORCED EPDM MEMBRANE (45-Mil, 60-Mil & 75-Mil) Used in mechanically attached and fully adhered roofing systems in new construction, reroofing and recover (retrofit) applications. It may also be used as flexible membrane flashings for walls, curbs, etc; when installing EPDM membrane roofing systems. The system must be installed over acceptable roof insulation or other suitable substrate. See the MuleHide EPDM Specifications Manual for complete specifications and details.

WHITE-ON-BLACK EPDM MEMBRANE (60-Mil & 90-Mil) Used primarily in fully adhered roofing systems on new construction, reroofing and recover (retrofit) applications. The 60-mil membrane may also be used as flexible membrane flashings for walls, curbs, etc; when installing EPDM membrane roofing systems. The system must be installed over acceptable roof insulation or other suitable substrate. See the MuleHide Specifications Manual for complete specifications and details.

GRAY EPDM MEMBRANE (60-Mil) Used primarily in fully adhered roofing systems, Gray EPDM offers reflectivity while still providing use in markets where heating and cooling costs are more balanced. Also added slip resistance of rubber and less glare compared to typical white roofs.

POLYEPICHLOROHYDRIN (ECO/CO) Used as a protective overlayment on EPDM Roofing Systems having positive drainage offering increased resistance to hydrocarbons, solvents, grease and oils.

Other EPDM Membranes Available: Self-Adhered, Pre-Taped, Low-Talc and Clean Sheet



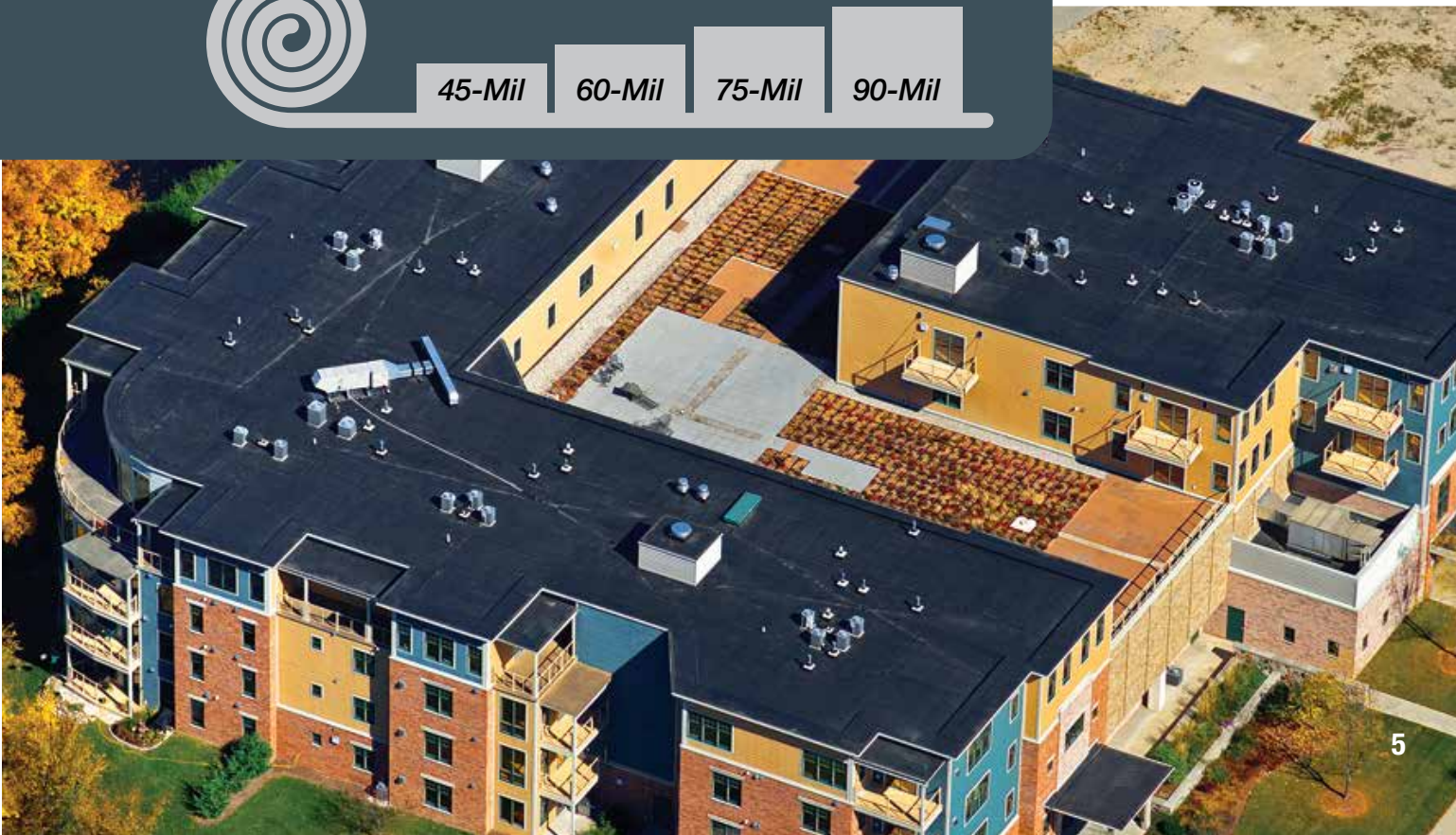
Membrane Thickness

45-Mil

60-Mil

75-Mil

90-Mil



EPDM ADHESIVES & SEALANTS



EPDM TPO

AEROWEB LOW-VOC AEROSOL CONTACT ADHESIVE

AeroWeb Low-VOC Adhesive/Primer with its web-like spray pattern is a versatile option for Standard TPO & EPDM on vertical & horizontal surfaces, adhering Fleece Back (vertical app only), enhancing the bond between F5 Air & Vapor Barrier and various substrates, priming unexposed asphalt prior to applying Helix Max for insulation attachment.

Product Code	Description	Carton	Shelf Life
08MHAWAP40	AeroWeb LV Adhesive/Primer	1	1 Year
08MHCCGH6	6' Hose	1	N/A
08MHCCGH12	12' Hose	1	
08MHCCGH18	18' Hose	1	
08MHCCGSGN	Spray Gun (for vertical)	1	
08MHCCGSGV	Spray Gun with 24" extension (for horizontal)	1	



ACRYLIC WATER BASE BONDING ADHESIVE

Used for single-side, wet, horizontal application of EPDM to acceptable HD wood fiberboard, plywood, OSB, DensDeck® Prime Roof Board or SECUROCK® Roof Board. Low-temperature restrictions apply.

EPDM

Product Code	Description	Carton	Coverage	Shelf Life
08MHWBBA1	1-Gallon Pail	4 per	100-120 sq.ft. per gallon	1 year
08MHWBBA5	5-Gallon Pail	1 per		



BONDING ADHESIVE

A high-strength solvent-based contact adhesive that allows quick bonding of EPDM membrane and cured flashings to various porous and non-porous substrates. May be used on both horizontal and vertical surfaces. Formulated for application with a 1/2" (13 mm) medium nap roller.

EPDM

Product Code	Description	Coverage	Shelf Life
08MHBOND5	5-Gallon Pail	60 sq.ft. per gallon	1 year



AQUABASE 120 BONDING ADHESIVE

A two-sided water-based bonding adhesive used to adhere EPDM, Standard TPO, TPO Fleece Back and PVC Fleece Back membranes to approved surfaces. Can be used as a one-sided, wet lay-in adhesive with MuleHide Fleece Back membranes. Low-temperature restrictions apply.

EPDM TPO PVC

Product Code	Description	Coverage	Shelf Life
08MHAB1205	5-Gallon Pail	60 sq.ft. per gallon	1 year



LOW-VOC BONDING ADHESIVE

A high-strength solvent-based contact adhesive that allows bonding of EPDM and TPO to various porous and non-porous substrates. Specially formulated using a blend of VOC exempt and non-exempt solvents to meet the < 250 g/L VOC content requirements of the OTC Model Rule for adhesives and sealants.

1168 LOW-VOC BONDING ADHESIVE

This version meets requirements of California Rule 1168.

EPDM TPO

Product Code	Description	Coverage	Shelf Life
08MHETBLV1	1-Gallon Pail (6/ctn)	60 sq.ft. per gallon	1 year
08MHETBLV5	5-Gallon Pail		
08MH11685	1168 California 5-Gallon Pail		



EPDM X-23 LOW-VOC BONDING ADHESIVE

A high-strength, solvent-based contact adhesive that bonds EPDM membranes to various porous and non-porous substrates.

EPDM

Product Code	Description	Weight	Coverage	Shelf Life
08MHBLX235	5-Gallon Pail	42 lbs.	60 sq.ft. per gallon	1 year



POURABLE SEALER

A two-component, solvent-free, polyurethane-based product compatible with MuleHide EPDM systems. Designed to provide a flexible, yet long lasting seal around hard to flash penetrations through the roof deck.

EPDM

Product Code	Description	Weight	Coverage	Shelf Life
08MHPSLR	1-Gallon/1-Pint (2 per carton)	18 lbs.	200 cu.in.	1 year



BLACK ONE-PART POURABLE SEALER

Designed for use with EPDM Pourable Sealant Pockets. The sealant's one-part, pourable consistency allows for quick pocket filling without mixing.

EPDM

Product Code	Description	Weight	Coverage	Shelf Life
08MHPSOPBK	1/2-Gallon Pouches (4 per carton)	26 lbs.	200 cu.in.	1.5 years



THERMOPLASTIC ONE-PART POURABLE SEALER (WHITE)

Designed for use with TPO, PVC & EPDM Pourable Sealer Pockets. The sealant's one-part, pourable consistency allows for quick pocket filling without mixing.

EPDM TPO PVC

Product Code	Description	Weight	Coverage	Shelf Life
08MHTPSWHE	1/2-Gallon Pouches (4 per carton)	29 lbs.	122 cu.in.	1 year



WATER CUT-OFF MASTIC

Used to seal roofing membranes to stop water penetration into the roofing system. Common uses are at drain terminations and behind MuleHide All Purpose Bars at wall terminations.

LOW-VOC WATER CUT-OFF MASTIC

EPDM TPO PVC

Product Code	Description	Weight	Coverage	Shelf Life
08MHWTRC	11-oz Tube (25 per carton)	27 lbs.	10 Ln.ft.	1 year
08MHLVWTRC			with 1/2" bead	



UNIVERSAL SINGLE-PLY SEALANT

A 100% solids, solvent-free, one-part, polyether sealant that provides a weather-tight seal to a variety of building substrates. Provides excellent adhesion to substrates such as stone, masonry, ceramic, marble, wood, steel, aluminum, most plastics and composites. Not recommended as a glass-glazing sealant.

EPDM TPO PVC

Product Code	Description	Weight	Coverage	Shelf Life
08MHUSPSWH	10.1-oz Tube, White (24/carton)	24 lbs.	25 Ln.ft.	1 year
08MHUSPSG	10.1-oz Tube, Gray (24/carton)		with 1/4" bead	

EPDM SEAMING



EPDM

TAPE PRIMER

A solvent-based product designed for one-step cleaning and priming of EPDM surfaces to be bonded with In-Seam Tapes, Uncured Flashing Tapes, Cured Cover Tapes and Pre-Taped membranes.



EPDM

TPO

LOW-VOC PRIMER

A low-VOC product designed for one-step cleaning and priming of EPDM and TPO surfaces prior to the application of In-Seam Tapes and other taped products. Specially formulated using a blend of VOC exempt and non-exempt solvents to meet the < 250 g/L VOC content requirements of the OTC Model Rule for adhesives and sealants.

Product Code	Description	Carton	Coverage	Shelf Life
08MHTAPR1	1-Gallon Pail	6 per	250 sq.ft. per gallon	9 months

Product Code	Description	Carton	Coverage	Shelf Life
08MHEPLV1	1-Gallon Pail	6 per	250 sq.ft. per gallon	9 months



WEATHERED MEMBRANE CLEANER

Used to clean in-service EPDM membrane that has been exposed to the weather, and clean TPO membrane prior to the welding process. Helps to loosen and remove dirt and other contaminants from the surface of the EPDM and TPO membranes and leaves a suitable surface for welding or the subsequent application of Tape Primer.

EPDM TPO

Product Code	Description	Carton	Coverage
08MHTWMC1	1-Gallon Pail	2 per	400 sq.ft. (1-side) per gallon
08MHTWMC5	5-Gallon Pail	1 per	



LOW-VOC MEMBRANE CLEANER

Used to clean both new and in-service EPDM, TPO, PVC and PVC KEE membranes prior to the seaming process. This cleaner helps to loosen and remove dirt and other contaminants from the membrane surface and leaves a suitable surface for welding or the subsequent application of Tape Primer.

*Meets California & Utah VOC regulations

EPDM TPO PVC

Product Code	Description	Carton	Coverage
08MHTLVMC1	1-Gallon Pail / Low-VOC*	2 per	400 sq.ft. (1-side) per gallon
08MHTLVMC5	5-Gallon Pail / Low-VOC*	1 per	



LOW-VOC UN-TACK (CLEANER)

Low-VOC UN-TACK Adhesive Remover & Cleaner is designed to remove adhesives from a variety of surfaces, including metal, vinyl, plastic, rubber, glass and most fabrics. Low-VOC UN-TACK also helps to remove damaged and improperly installed insulation and other materials, including adhesives and contact cements. This product will help prepare surfaces for the application of Hardcast rolled sealants, butyl tapes and other adhesives, while also aiding in their removal.

EPDM TPO

Product Code	Description	Carton	Shelf Life
08MHCCGUT8	Low-VOC Un-Tack	1	1 Year



EPDM BLACK LAP SEALANT

Required for sealing EPDM seams and flashings against the effects of weathering when seamed with Splice Adhesive or All-Purpose Single Seal Adhesive. Refer to the MuleHide EPDM Manual for appropriate use of Lap Sealant when seams and flashings are completed with MuleHide tape products.

EPDM

Product Code	Description	Carton	Coverage	Shelf Life
08MHLPCB	11-oz Tube	25 per	22 Ln.ft. with 5/16" bead	1 year



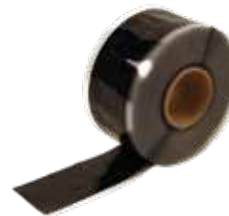
SPLICE ADHESIVE - BLACK OR WHITE

Used on EPDM membranes for splicing field sheets. Also used to splice uncured EPDM flashing material to cured EPDM membranes. Use White Splice Adhesive when a white (white-on-black) membrane is required. MuleHide Tape Primer must be used to prepare the membrane prior to the application of the adhesive.

Cannot be used on warranted projects.

EPDM

Product Code	Description	Carton	Coverage	Shelf Life
08MHSPB1	Black 1-Gallon Pail	6 per	3" = 150 ft	1 year
08MHSPW1	White 1-Gallon Pail		4" = 120 ft	
		6" = 100 ft		



EPDM IN-SEAM TAPE

A black or white, butyl rubber-based adhesive in tape form. Formulated to provide high green strength in both shear and peel. May be used on ballasted, mechanically attached and fully adhered EPDM roofing systems.

Requires the use of Tape Primer or Low-VOC Primer.

EPDM

Product Code	Description	Carton	Shelf Life
08MHINSMT3	Black 3" x 100'	4 per	1 year
08MHINSMT2	Black 3" x 25'	12 per	
08MHINSMT6	Black 6" x 100'	2 per	
08MHINST3W	White 3" x 100'	4 per	
08MHINST6W	White 6" x 100'	2 per	

EPDM FLASHING



6" REINFORCED EPDM MEMBRANE STRIPS (RMS)

Used in conjunction with MuleHide 2.4" seam plates and MuleHide HDP fasteners as securement of the EPDM membranes at the base of parapet walls and curbs. Installed beneath the EPDM field sheet and used as an alternate method to using the MuleHide All Purpose Bar.

EPDM

Requires the use of Tape Primer or Low-VOC Primer.

Product Code	Description	Carton	Weight	Shelf Life
08MHRMS61T	6" x 100' Roll w/3" Tape	2 per	39 lbs.	1 year



9" REINFORCED EPDM MEMBRANE STRIPS (RMS)

Available in a 9" width with two strips of pre-applied In-Seam Tape. Used to attach EPDM membranes horizontally in the field of the roof on mechanically fastened systems.

EPDM

Requires the use of Tape Primer or Low-VOC Primer.

Product Code	Description	Carton	Weight	Shelf Life
08MHRMS91T	9" x 100' Roll w/2 Rows of 3" Tape	1 per	33 lbs.	1 year



CURED COVER TAPE

A nominal 60-mil, cured EPDM membrane strip laminated to nominal 30-mil cured butyl rubber tape and rolled onto a release liner, for a total nominal thickness of 90-mil. Commonly used to strip in metal edging.

EPDM

Requires the use of Tape Primer or Low-VOC Primer.

Product Code	Size	Color	Carton	Weight	Shelf Life
08MHLAT6	6" x 100'	Black	2 per	56 lbs.	1 year
08MHLAT9	9" x 100'		1 per	42 lbs.	
08MHLAT250	12" x 50'			30 lbs.	
08MHLAT62W	6" x 25'	White	4 per	25 lbs.	
08MHLAT61W	6" x 100'		2 per	57 lbs.	
08MHLAT91W	9" x 100'		1 per	43 lbs.	
08MHLAT125W	12" x 50'		1 per	29 lbs.	
08MHCT061G	6" x 100'	Gray	2 per	57 lbs.	
08MHCT091G	9" x 100'		1 per	43 lbs.	



UNCURED FLASHING TAPE

May be used in conjunction with the MuleHide Tape Primer to flash inside and outside corners, pipes, pitch pockets or other penetrations that require the flashing to be molded or conform to an irregular shape. Not permitted for use in flashing gravel stops, drip aprons or stripping seams or batten bars.

EPDM

Requires the use of Tape Primer or Low-VOC Primer.

Product Code	Size	Color	Carton	Weight	Shelf Life
08MHUT061B	6" x 100'	Black	2 per	38 lbs.	6-9 months
08MHUT062B	6" X 25'		8 per	38 lbs.	
08MHUT095B	9" x 50'		1 per	15 lbs.	
08MHUT125B	12" x 50'		1 per	20 lbs.	
08MHUT061W	6" x 100'	White	2 per	60 lbs.	
08MHUT095W	9" x 50'		1 per	24 lbs.	
08MHUT125W	12" x 50'		1 per	33 lbs.	
08MHUT061G	6" x 100'	Gray	2 per	60 lbs.	
08MHUT095G	9" x 50'		1 per	24 lbs.	
08MHUT125G	12" x 50'		1 per	33 lbs.	



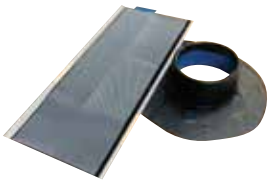
EPDM CURB WRAP

Curb Wraps provide an efficient means to flash a curb with EPDM materials. Curb Wrap is pre-cut to a 20" width and has 6" In-Seam Tape pre-applied. Production time can be substantially reduced with this labor saving product.

EPDM

Requires the use of Tape Primer or Low-VOC Primer.

Product Code	Description	Carton	Weight	Shelf Life
08MHCW256B	20" x 50' w/6" Tape, Black	1 per	38 lbs.	1 year
08MHCW252B	20" x 50' w/20" Tape, Black		49 lbs.	
08MHCWT25W	20" x 50' w/6" Tape, White		38 lbs.	
08MHCWT25G	20" x 50' w/20" Tape, Gray		49 lbs.	



POURABLE SEALER POCKETS

Ideal for sealing irregular, hard to flash penetrations through the membrane. Prefabricated pockets consisting of a 2" (50 mm) wide plastic support strip with attached Uncured EPDM Flashing Tape.

Requires the use of Tape Primer or Low-VOC Primer.

EPDM

Product Code	Description	Carton	Weight	Shelf Life
08MHPSP4	4" Black	12 per	4 lbs.	9 months
08MHPSP6	6" Black		5 lbs.	
08MHPSP8	8" Black		8 lbs.	
08MHPSP6G	6" Gray		5 lbs.	



PREMOLDED EPDM PIPE BOOTS

Accommodates single pipe sizes from 1" to 6" in diameter. Conical-shaped steps securely seal all single pipe penetrations. The large, double-thick, molded rib at the top of each step offers superior tear-resistance and reinforcement, as well as a cutting guide.

Requires the use of Tape Primer or Low-VOC Primer.

EPDM

Product Code	Description	Carton	Size	Weight	Shelf Life
08MHPBTB6T	Black with clamps and tape rings	10 per	1" - 6"	8 lbs.	1 year
08MHPBTW6T	White with clamps and tape rings			10 lbs.	
08MHPBTG6T	Gray with clamps and tape rings			10 lbs.	



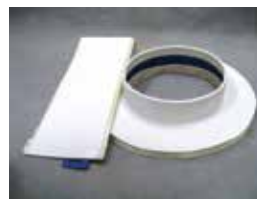
PRE-CUT INSIDE/OUTSIDE CORNERS

Ideal for installing inside and outside corners. Consists of .060 inch (1.5 mm) thick uncured EPDM flashing material laminated to cured butyl rubber tape and rolled onto a poly release liner providing .090-mils (2.25 mm) of total thickness.

Requires the use of Tape Primer or Low-VOC Primer.

EPDM

Product Code	Description	Carton	Weight	Shelf Life
08MHPCC20	7" x 9", Black	20 per	5 lbs.	9 months
08MHCPSWH2	7" x 9", White		8 lbs.	
08MHCPSG2	7" x 9", Gray		8 lbs.	



WHITE POURABLE SEALER POCKETS

Prefabricated pockets consisting of a 2" (50 mm) wide plastic support strip with attached Uncured EPDM Flashing Tape ideal for sealing irregular, hard to flash penetrations through the membrane. Use MuleHide Thermoplastic One-Part Pourable Sealer as a white filler.

Requires the use of Tape Primer or Low-VOC Primer.

EPDM

Product Code	Description	Carton	Weight	Shelf Life
08MHPSP6WH	6" White	12 per	6 lbs.	6 months



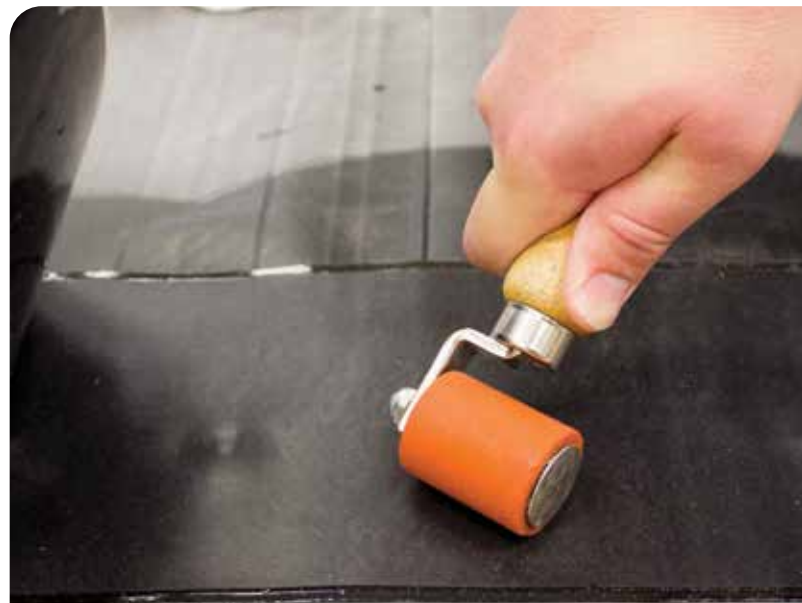
T-JOINT PATCHES

Used to seal field splice joints or a horizontal-to-vertical field seam transition. 40-mil (1 mm) thick uncured EPDM flashing material laminated to cured butyl rubber tape and rolled onto a poly release liner for a total thickness of 70-mils (1.75 mm).

Requires the use of Tape Primer or Low-VOC Primer.

EPDM

Product Code	Description	Carton	Weight	Shelf Life
08MHETJ6B	6" x 6", Black	20 per	3 lbs.	9 months
08MHETJ12B	12" x 12", Black		10 lbs.	
08MHETJ6G	6" x 6", Gray		3 lbs.	



EPDM ACCESSORIES



WALKWAY PADS WITH TAPE

Designed to protect the membrane in areas exposed to repetitive foot traffic. MuleHide requires walkways to be installed at all traffic concentration points, such as roof hatches, access door, rooftop ladders, etc. regardless of traffic frequency. Walkways are also required if regular maintenance (once a month or more) is necessary to service rooftop equipment.

Requires the use of Tape Primer or Low-VOC Primer.

EPDM

Product Code	Description	Pallet	Weight
08MHWP303T	Black with tape - 30" x 30"	50 per	515 lbs.
08MHWP30WT	White with tape - 30" x 30"		496 lbs.
08MHWP30GT	Gray with tape - 30" x 30"		500 lbs.



YELLOW WARNING STRIP

Intended for use on EPDM, TPO or PVC roofing systems to provide a visual warning of an impending hazard (i.e. roof edge, deep drain sump, skylight, etc.) Beneficial when maintenance personnel are frequently on the roof. Cannot be used for flashings or as a coverstrip.

Requires the use of Tape Primer or Low-VOC Primer.

EPDM

TPO

PVC

Product Code	Description	Carton	Weight	Shelf Life
08MHTSC61Y	6" x 100'	2 per	41 lbs.	1 year



HP PROTECTIVE MAT

A nominal 6 ounce per square yard (140 grams per square meter) UV-resistant polypropylene needle-punched fabric. Can be used above the membrane as a slipsheet for crushed stone, or pavers, or below the membrane as a minimum underlayment mat for mechanically attached or ballasted system applications.

EPDM

TPO

PVC

Product Code	Description	Coverage	Weight
08MHPM153	15' X 300'	4,500 sq.ft.	225 lbs.



RUBBER PAVER BLOCKS

An environmentally friendly product that provides superior protection to the underlying membrane. Features a resilient, shock-absorbing, weather-resistant traffic surface. Pavers lock together to provide multi-directional drainage patterns eliminating the need for protective mats. Consists of 90% post-consumer recycled content.

EPDM

TPO

PVC

Product Code	Description	Dimensions	Weight
08MHP222BK	Black	2" x 24" x 24"	24 lbs.
08MHP222TC	Terra Cotta		

TPO



THERMOPLASTIC POLYOLEFIN

TPO MEMBRANE STANDARD & FR (45-Mil & 60-Mil) Used in mechanically attached and fully adhered roofing systems in new construction, reroofing and recover (retrofit) applications. It may also be used as flexible membrane flashings for walls, curbs, etc. when installing TPO membrane roofing systems. The system must be installed over acceptable roof insulation or other suitable substrate. See the MuleHide TPO Specifications Manual for complete specifications and details.

TPO WITH CLEAN FILM (60-Mil & 80-Mil) Identical product to the TPO Membrane Standard & FR (above) except with a removable film to protect the roof during installation. There is no need to clean the roof after installation—simply remove the film and the roof is ready for final inspection.

SA-TPO MEMBRANE (60-Mil) Used in fully adhered roofing systems in new construction, reroofing and recover (retrofit) applications. It may also be used as flexible membrane flashings for walls, curbs, etc. when installing TPO-c membrane roofing systems. The system must be installed over acceptable roof insulation or other suitable substrate. See the MuleHide TPO Specifications Manual for complete specifications and details.

TPO EXTRA MEMBRANE (80-Mil) Used in mechanically attached and fully adhered roofing systems in new construction, reroofing and recover (retrofit) applications. It may also be used as flexible membrane flashings for walls, curbs, etc. when installing TPO membrane roofing systems. The system must be installed over an acceptable roof insulation or other suitable substrate. See the MuleHide TPO Specifications Manual for complete specifications and details.

TPO FLEECE BACK MEMBRANE (45-Mil, 60-Mil & 80-Mil) Used in fully adhered and mechanically attached roofing systems in new construction, reroofing and recover (retrofit) applications. The system must be installed over an acceptable roof insulation or other suitable substrate. See the MuleHide TPO Fleece Back Specifications Manual for complete specifications and details.

TPO FLEECE BACK PLUS MEMBRANE (45-Mil, 60-Mil & 80-Mil) Used in fully adhered roofing systems in new construction, reroofing and recover (retrofit) applications, where the roof membrane is adhered with hot asphalt. The system must be installed over an acceptable roof insulation or other suitable substrate. See the MuleHide TPO Fleece Back PLUS Specifications Manual for complete specifications and details.

Other TPO Membranes Available: TPO Fleece Back Plus with Clean Film (60 & 80-mil)



Membrane Thickness

45-Mil

60-Mil

80-Mil



TPO ADHESIVES & SEALANTS



EPDM TPO

AEROWEB LOW-VOC AEROSOL CONTACT ADHESIVE

AeroWeb Low-VOC Contact Adhesive/Primer with its web-like spray pattern is a versatile option for Standard TPO & EPDM on vertical & horizontal surfaces, adhering Fleece Back (vertical app only), enhancing the bond between F5 Air & Vapor Barrier and various substrates, priming unexposed asphalt prior to applying Helix Max for insulation attachment.



TPO

TPO BONDING ADHESIVE

A high-strength solvent-based contact adhesive that allows bonding of MuleHide TPO membrane to various porous and non-porous substrates.

Product Code	Description	Carton	Shelf Life
08MHAWAP40	AeroWeb LV Adhesive/Primer	1	1 Year
08MHCCGH6	6' Hose	1	N/A
08MHCCGH12	12' Hose	1	
08MHCCGH18	18' Hose	1	
08MHCCGSGN	Spray Gun (for vertical)	1	
08MHCCGSGV	Spray Gun with 24" extension (for horizontal)	1	

Product Code	Description	Coverage	Shelf Life
08MHTBAAM5	5-Gallon Pail	60 sq.ft. per gallon	1 year



AQUABASE 120 BONDING ADHESIVE

A two-sided water-based bonding adhesive used to adhere EPDM, Standard TPO, TPO Fleece Back and PVC Fleece Back membranes to approved surfaces. Can be used as a one-sided, wet lay-in adhesive with MuleHide Fleece Back membranes. Low-temperature restrictions apply.



Product Code	Description	Coverage	Shelf Life
08MHAB1205	5-Gallon Pail	100-120 sq.ft. per gallon	1 year



LOW-VOC BONDING ADHESIVE

A high-strength solvent-based contact adhesive that allows bonding of EPDM and TPO to various porous and non-porous substrates. Specially formulated using a blend of VOC exempt and non-exempt solvents to meet the < 250 g/L VOC content requirements of the OTC Model Rule for adhesives and sealants.



1168 LOW-VOC BONDING ADHESIVE

This version meets requirements of California Rule 1168.

Product Code	Description	Coverage	Shelf Life
08MHETBLV1	1-Gallon Pail (6/ctn)	60 sq.ft. per gallon	1 year
08MHETBLV5	5-Gallon Pail		
08MH11685	1168 California 5-Gallon Pail		



THERMOPLASTIC ONE-PART POURABLE SEALER (WHITE)

Designed for use with TPO, PVC & EPDM Pourable Sealer Pockets. The sealer's one-part, pourable consistency allows for quick pocket filling without mixing.



Product Code	Description	Weight	Coverage	Shelf Life
08MHTPSWHE	1/2-Gallon Pouches (4 per carton)	29 lbs.	122 cu.in.	1 year



WATER CUT-OFF MASTIC

Used to seal roofing membranes to stop water penetration into the roofing system. Common uses are at drain terminations and behind MuleHide All Purpose Bars at wall terminations.



LOW-VOC WATER CUT-OFF MASTIC

Product Code	Description	Weight	Coverage	Shelf Life
08MHWTRC	11-oz Tube	27 lbs.	10 Ln.ft. with 1/2" bead	1 year
08MHLVWTRC	(25 per carton)			



UNIVERSAL SINGLE-PLY SEALANT

A 100% solids, solvent-free, one-part, polyether sealant that provides a weather-tight seal to a variety of building substrates. Provides excellent adhesion to substrates such as stone, masonry, ceramic, marble, wood, steel, aluminum, most plastics and composites. Not recommended as a glass-glazing sealant.



Product Code	Description	Weight	Coverage	Shelf Life
08MHUSPSWH	10.1-oz Tube (24 per carton)	24 lbs.	25 Ln.ft. with 1/4" bead	1 year



TPO CUT-EDGE SEALANT

A thermoplastic compound designed for use at the edge of cut MuleHide TPO membrane seams after the membrane has been welded to itself or to MuleHide TPO Coated Metal.



LOW-VOC CUT-EDGE SEALANT

*Meets California & Utah VOC regulations

Product Code	Description	Coverage	Carton	Shelf Life
08MHTCESCE	16-oz Bottle	250 -275 lf 1/8" bead	8 per	1 year
08MHTCELVE	16-oz Bottle	250 -275 lf 1/8" bead	8 per	1 year

TPO SEAMING



WEATHERED MEMBRANE CLEANER

Used to clean in-service EPDM membrane that has been exposed to the weather and clean TPO membrane prior to the welding process. Helps to loosen and remove dirt and other contaminants from the surface of the EPDM and TPO membranes and leaves a suitable surface for welding or the subsequent application of Tape Primer.

EPDM TPO

Product Code	Description	Carton	Coverage
08MHTWMC1	1-Gallon Pail	2 per	400 sq.ft. (1-side)
08MHTWMC5	5-Gallon Pail	1 per	per gallon



LOW-VOC WEATHERED MEMBRANE CLEANER

Used to clean both new and in-service EPDM, TPO, PVC and PVC KEE membranes prior to the seaming process. This cleaner helps to loosen and remove dirt and other contaminants from the membrane surface and leaves a suitable surface for welding or the subsequent application of Tape Primer.

*Meets California & Utah VOC regulations

EPDM TPO PVC

Product Code	Description	Carton	Coverage
08MHTLVMC1	1-Gallon Pail / Low-VOC*	2 per	400 sq.ft. (1-side)
08MHTLVMC5	5-Gallon Pail / Low-VOC*	1 per	per gallon



LOW-VOC UN-TACK (CLEANER)

Low-VOC UN-TACK Adhesive Remover & Cleaner is designed to remove adhesives from a variety of surfaces, including metal, vinyl, plastic, rubber, glass and most fabrics. Low-VOC UN-TACK also helps to remove damaged and improperly installed insulation and other materials, including adhesives and contact cements. This product will help prepare surfaces for the application of Hardcast rolled sealants, butyl tapes and other adhesives, while also aiding in their removal.

EPDM TPO

Product Code	Description	Carton	Shelf Life
08MHCCGUT8	Low-VOC Un-Tack	1	1 Year



TPO PRIMER

A solvent-based product designed for one-step cleaning and priming of TPO surfaces to be bonded with In-Seam Tapes, Uncured Flashing Tapes, Cured Cover Tapes, and Pre-Taped membranes. It is specially formulated using a blend of VOC exempt and non-exempt solvents to meet the < 250 g/L VOC content requirements of the OTC Model Rule for adhesives and sealants.

TPO

Product Code	Description	Carton	Coverage	Shelf Life
08MHTMP1	1-Gallon Pail	6 per	250 F ² per gallon	1 year



LOW-VOC PRIMER

A low-VOC product designed for one-step cleaning and priming of EPDM and TPO surfaces prior to the application of In-Seam Tapes and other taped products.

EPDM TPO

Product Code	Description	Carton	Coverage	Shelf Life
08MHEPLV1	1-Gallon Pail	6 per	250 sq.ft. per gallon	9 months



TPO 45-MIL REINFORCED

Used as cover strips over end lap joints of Fleece Back Membrane. TPO flashing strips may also be used to flash over TPO coated metal joints and to strip-in coated metal flanges. May be used for general repairs where reinforced material is required.

TPO

Product Code	Description	Roll Size	Carton	Weight
08MHTR461W	White	6" x 100'	3 per	32 lbs.
08MHTR461G	Gray			
08MHTR461T	Tan			



10" TPO PRESSURE-SENSITIVE RUSS

10" wide TPO Pressure-Sensitive RUSS is used in place of narrow width sheets to secure membrane in the perimeter area of the roof. Allows field membrane to be utilized over the entire roof area. Ideal when multiple perimeter sheets or non-standard perimeter spacings are required.

Requires the use of TPO Tape Primer or Low-VOC Primer.

TPO

Product Code	Description	Carton	Weight	Shelf Life
08MHTSR10W	White 10" x 100'	1 per	30 lbs.	1 year



6" TPO PRESSURE-SENSITIVE RUSS

May be used with TPO and should only be installed on horizontal surfaces using an appropriate MuleHide fastener below the roof membrane providing additional securement at angle changes. RUSS is secured with MuleHide EHD (#15) or HDP (#14) Fasteners and MuleHide 2.4" Seam Plates.

Requires the use of TPO Tape Primer or Low-VOC Primer.

TPO

Product Code	Description	Carton	Weight	Shelf Life
08MHTSR6W	White 6" x 100'	2 per	33 lbs.	1 year



TPO 60-MIL NON-REINFORCED FLASHING

Primarily used to seal details where field fabrication is necessary, such as drain details, pipe flashings, pitch pocket flashings, seaming joints of the MuleHide TPO Coated Metal and any place where reinforced membrane is not practical.

TPO

Product Code	Description	Roll Size	Weight	Carton
08MHDM125W	White	12" x 50'	17 lbs.	1 per
08MHDM125G	Gray			
08MHDM125T	Tan			
08MHDM243W	White	24" x 50'	17 lbs.	1 per
08MHDM243G	Gray			
08MHDM243T	Tan			



TPO COVER STRIP

Intended to strip in flat metal flanges (i.e. drip edge or self-flashing curb flanges) or rows of fasteners and plates. TPO Cover Strip cannot be used for flashing corners, pipes, T-joints or butt joints on TPO Fleece Back Membrane or any angled metal flanges such as gravel stops or other canted metal edgings.

Requires the use of TPO Tape Primer or Low-VOC Primer.

TPO

Product Code	Description	Size	Carton	Weight	Shelf Life
08MHTSC61W	White	6" x 100'	2 per	48 lbs.	1 year
08MHTSC61G	Gray				
08MHTSC61T	Tan				



TPO FLASHING



TPO PIPE SEALS

Designed as an economical flashing for single pipe penetrations on MuleHide TPO Membrane roof systems. TPO Pipe Seals can be used wherever the TPO Pipe Seals may be slipped over the top of the pipe.

TPO

Product Code	Description	Size	Carton	Weight
08MHTP348W	White	3/4" to 8" OD	8 per	8 lbs.
08MHTP348G	Gray			
08MHTP348T	Tan			



MOLDED SEALANT POCKETS

Interlocking, two-piece prefabricated pockets of non-reinforced TPO material used to seal pipe clusters or other irregular shaped penetrations. Pockets length can be adjusted from 7-1/2" to 11-1/2" by following the pre-molded cutting lines.

TPO

Product Code	Description	Size	Carton	Weight
08MHTMSAPW	White	7-1/2" to 11-1/2"	5 per	4 lbs.
08MHTMSAPG	Gray			
08MHTMSAPT	Tan			



T-JOINT COVER

Used to seal step-offs at splice intersections. Installation is mandatory on all 60-mil and 80-mil TPO systems and on 45-mil systems where step-offs have not been properly sealed.

TPO

Product Code	Description	Size	Carton	Weight
08MHTTJPWH	White	4.5" circle	100 per	3 lbs.
08MHTTJPGY	Gray			
08MHTTJPTN	Tan			



UNIVERSAL CORNERS

Uniform in shape and size, and provide water-tightness at corners formed by TPO coated metal and/or TPO flashing membrane. Provides a neat, finished look to building corners, curbs and parapet flashings with no cutting or stretching required.

TPO

Product Code	Description	Carton	Weight
08MHTUCWHE	White	20 per	5 lbs.
08MHTUCGYE	Gray		
08MHTUCTNE	Tan		



OUTSIDE CORNERS

Uniform in shape and size, and provide water-tightness at outside corners formed by TPO coated metal and/or TPO flashing membrane. Provides a neat, finished look to building corners, curbs and parapet flashings with no cutting required.

TPO

Product Code	Description	Carton	Weight
08MHTOCWH	White	12 per	1 lbs.
08MHTOCGY	Gray		
08MHTOCTN	Tan		



INSIDE CORNERS

Uniform in shape and size, and provide water-tightness at inside corners formed by TPO coated metal and/or TPO flashing membrane. Provides a neat, finished look to building corners, curbs and parapet flashings with no cutting required.

TPO

Product Code	Description	Carton	Weight
08MHTICWH	White	12 per	1 lbs.
08MHTICG	Gray		
08MHTICTN	Tan		



TPO

TPO SPLIT PIPE SEALS

Contains a split (cut) and overlap tab that allows the pipe boot to be opened and wrapped around a round pipe with an obstruction. Such obstructions prevent the use of a standard pre-molded pipe boot.

Product Code	Description	Size	Carton	Weight
08MHTPSR1W	1" White Split Pipe Boot	1" Pipe OD	8 per	8 lbs.
08MHTPSR2W	2" White Split Pipe Boot	2" Pipe OD		
08MHTPSR3W	3" White Split Pipe Boot	3" Pipe OD		
08MHTPSR4W	4" White Split Pipe Boot	4" Pipe OD		
08MHTPSR5W	5" White Split Pipe Boot	5" Pipe OD		
08MHTPSR6W	6" White Split Pipe Boot	6" Pipe OD		



TPO

SQUARE TUBE WRAP

Fabricated square penetration flashings made of white 45-mil reinforced TPO membrane. Overall height of the flashings is 11 inches. A split (cut) and overlap tab are incorporated to allow the flashings to be opened and wrapped around a square penetration with an obstruction.

Product Code	Description	Size	Carton	Weight
08MHTST33W	3" Square Tube Wrap	3" x 3"	8 per	8 lbs.
08MHTST44W	4" Square Tube Wrap	4" x 4"		
08MHTST55W	5" Square Tube Wrap	5" x 5"		
08MHTST66W	6" Square Tube Wrap	6" x 6"		



TPO

DROP SCUPPER

The prefabricated drop tube scupper with heat-welded seams is an excellent alternative and solution for a through-roof soffit drain and downspout tie in. With an easy heat-weld flange for quick and watertight application.

Cannot be used on warranted projects. For residential use only.



TPO

THROUGH WALL SCUPPER

The prefabricated membrane-coated scupper insert-detail with heat-welded seams is a superior detail to the galvanized scupper sleeve and bonding-adhesive alternative.

Product Code	Description	Diameter	Length
08MHTSCD2W	TPO 2" Drop Scupper - White	1-7/8"	7-1/2"
08MHTSCD2T	TPO 2" Drop Scupper - Tan	1-7/8"	
08MHTSCD2G	TPO 2" Drop Scupper - Gray	1-7/8"	
08MHTSCD3W	TPO 3" Drop Scupper - White	2-5/8"	
08MHTSCD3T	TPO 3" Drop Scupper - Tan	2-5/8"	
08MHTSCD3G	TPO 3" Drop Scupper - Gray	2-5/8"	

		Clad Metal Through Wall Box		
Product Code	Description	L	H	W
08MHTSCT4W	TPO 4" Through Wall Scupper - White	16"	4"	4"
08MHTSCT4G	TPO 4" Through Wall Scupper - Gray			
08MHTSCT4T	TPO 4" Through Wall Scupper - Tan			
08MHTSCT6W	TPO 6" Through Wall Scupper - White		6"	6"
08MHTSCT6G	TPO 6" Through Wall Scupper - Gray			
08MHTSCT6T	TPO 6" Through Wall Scupper - Tan			



TPO

BREATHER VENTS

Prefabricated two-way, or static, vents allow proper ventilation of attic spaces below TPO membranes. The reinforced membrane flange allows for quick installation by centering vent over opening and welding to the field membrane.



TPO

VENT COLLAR COMBO

Prefabricated flashing for hot stacks, dryer vents or static attic vents that come complete with painted metal sleeve and vent caps. Large target base patch allows for quick installation by simply screwing the metal sleeve to the deck and then welding the target base to the field membrane.

Cannot be used on warranted projects. For residential use only.

Product Code	Description	Dia.	Length	Net Free Area	Spacing
08MHTBV1W	TPO 1-Way Breather Vent - White	4"	8"	N/A	1 per 1,000 sq ft
08MHTBV1G	TPO 1-Way Breather Vent - Gray			N/A	
08MHTBV1T	TPO 1-Way Breather Vent - Tan			N/A	
08MHTBV2W	TPO 2-Way Breather Vent - White			12-sq.in.	
08MHTBV2G	TPO 2-Way Breather Vent - Gray				
08MHTBV2T	TPO 2-Way Breather Vent - Tan				

Product Code	Description	Diameter	Height	Spacing
08MHTRVOCW	TPO Vent Collar Combo - White	8-1/4"	5-3/4"	1 per 1,500 sq ft
08MHTRVOCG	TPO Vent Collar Combo - Gray			
08MHTRVOC T	TPO Vent Collar Combo - Tan			

TPO COLORWAY



COLOR OPTIONS:

* Colors shown are matched as accurately as possible, but may vary slightly from finished product.



Product Code	Description	Size	Packaging	Weight
.060 NON-REINFORCED FLASHING				
08MHDM24MZ	Medium Bronze	24" x 50'	1/carton	33 lbs.
08MHDM24PG	Patina Green			
08MHDM24RB	Rock Brown			
08MHDM24SG	Slate Gray			
08MHDM24TC	Terra Cotta			
CONTOUR RIB PROFILE				
08MHTCR1MZ	Medium Bronze	10'	20/carton	84 lbs.
08MHTCR1PG	Patina Green			
08MHTCR1RB	Rock Brown			
08MHTCR1SG	Slate Gray			
08MHTCR1TC	Terra Cotta			
COATED METAL				
08MHCM48MZ	Medium Bronze	4' x 10'	5/pallet	63 lbs.
08MHCM48PG	Patina Green			
08MHCM48RB	Rock Brown			
08MHCM48SG	Slate Gray			
08MHCM48TC	Terra Cotta			
UNIVERSAL CONICAL BOOT				
08MHTC16MZ	Medium Bronze	1" - 6"	8/carton	6 lbs.
08MHTC16PG	Patina Green			
08MHTC16RB	Rock Brown			
08MHTC16SG	Slate Gray			
08MHTC16TC	Terra Cotta			

An industry exclusive! TPO Colorway membranes now have matching pre-fabricated accessories including split pipe boots, coated metal, conical boots, inside and outside corners, t-joint patches and more. Match your roof surface with complimentary edge metal colors for an architectural look and feel.

Product Code	Description	Size	Packaging	Weight	
SPLIT PIPE BOOTS					
08MHTSB1MZ	1" Medium Bronze	1" Pipe	8/carton	4 lbs.	
08MHTSB1PG	1" Patina Green				
08MHTSB1RB	1" Rock Brown				
08MHTSB1SG	1" Slate Gray				
08MHTSB1TC	1" Terra Cotta				
08MHTSB2MZ	2" Medium Bronze	2" Pipe		8/carton	4 lbs.
08MHTSB2PG	2" Patina Green				
08MHTSB2RB	2" Rock Brown				
08MHTSB2SG	2" Slate Gray				
08MHTSB2TC	2" Terra Cotta				
08MHTSB3MZ	3" Medium Bronze	3" Pipe	8/carton		5 lbs.
08MHTSB3PG	3" Patina Green				
08MHTSB3RB	3" Rock Brown				
08MHTSB3SG	3" Slate Gray				
08MHTSB3TC	3" Terra Cotta				
08MHTSB4MZ	4" Medium Bronze	4" Pipe		8/carton	6 lbs.
08MHTSB4PG	4" Patina Green				
08MHTSB4RB	4" Rock Brown				
08MHTSB4SG	4" Slate Gray				
08MHTSB4TC	4" Terra Cotta				
08MHTSB5MZ	5" Medium Bronze	5" Pipe	8/carton		6 lbs.
08MHTSB5PG	5" Patina Green				
08MHTSB5RB	5" Rock Brown				
08MHTSB5SG	5" Slate Gray				
08MHTSB5TC	5" Terra Cotta				
08MHTSB6MZ	6" Medium Bronze	6" Pipe		8/carton	8 lbs.
08MHTSB6PG	6" Patina Green				
08MHTSB6RB	6" Rock Brown				
08MHTSB6SG	6" Slate Gray				
08MHTSB6TC	6" Terra Cotta				
OUTSIDE CORNERS					
08MHTOCMZ	Medium Bronze	NA	12/carton		1 lb.
08MHTOCPG	Patina Green				
08MHTOCRB	Rock Brown				
08MHTOCSG	Slate Gray				
08MHTOCTC	Terra Cotta				
INSIDE CORNERS					
08MHTICMZ	Medium Bronze	NA	12/carton	1 lb.	
08MHTICPG	Patina Green				
08MHTICRB	Rock Brown				
08MHTICSG	Slate Gray				
08MHTICTC	Terra Cotta				

Product Code	Description	Size	Packaging	Weight				
T-JOINT PATCHES								
08MHTTJPMZ	Medium Bronze	4-1/2" Diameter	100/carton	1 lb.				
08MHTTJPPG	Patina Green							
08MHTTJPRB	Rock Brown							
08MHTTJPSG	Slate Gray							
08MHTTJPTC	Terra Cotta							
SQUARE TUBE WRAP								
08MHTSW2MZ	2" Medium Bronze	2" x 2"	8/carton	6 lbs.				
08MHTSW2PG	2" Patina Green							
08MHTSW2RB	2" Rock Brown							
08MHTSW2SG	2" Slate Gray							
08MHTSW2TC	2" Terra Cotta							
08MHTSW3MZ	3" Medium Bronze	3" x 3"			8/carton	6 lbs.		
08MHTSW3PG	3" Patina Green							
08MHTSW3RB	3" Rock Brown							
08MHTSW3SG	3" Slate Gray							
08MHTSW3TC	3" Terra Cotta							
08MHTSW4MZ	4" Medium Bronze	4" x 4"					8/carton	6 lbs.
08MHTSW4PG	4" Patina Green							
08MHTSW4RB	4" Rock Brown							
08MHTSW4SG	4" Slate Gray							
08MHTSW4TC	4" Terra Cotta							
08MHTSW5MZ	5" Medium Bronze	5" x 5"	8/carton	6 lbs.				
08MHTSW5PG	5" Patina Green							
08MHTSW5RB	5" Rock Brown							
08MHTSW5SG	5" Slate Gray							
08MHTSW5TC	5" Terra Cotta							
08MHTSW6MZ	6" Medium Bronze	6" x 6"			8/carton	6 lbs.		
08MHTSW6PG	6" Patina Green							
08MHTSW6RB	6" Rock Brown							
08MHTSW6SG	6" Slate Gray							
08MHTSW6TC	6" Terra Cotta							
DROP SCUPPERS								
08MHTSD2MZ	2" Medium Bronze	1-7/8" Diameter; 7-1/2" Length					1/carton	2 lb.
08MHTSD2PG	2" Patina Green							
08MHTSD2RB	2" Rock Brown							
08MHTSD2SG	2" Slate Gray							
08MHTSD2TC	2" Terra Cotta							
08MHTSD3MZ	3" Medium Bronze	2-5/8" Diameter; 7-1/2" Length	1/carton	2 lb.				
08MHTSD3PG	3" Patina Green							
08MHTSD3RB	3" Rock Brown							
08MHTSD3SG	3" Slate Gray							
08MHTSD3TC	3" Terra Cotta							

Product Code	Description	Size	Packaging	Weight		
THRU WALL SCUPPERS						
08MHTTS3MZ	3" Medium Bronze	3"x3"x16"	1/carton	6 lbs.		
08MHTTS3PG	3" Patina Green					
08MHTTS3RB	3" Rock Brown					
08MHTTS3SG	3" Slate Gray					
08MHTTS3TC	3" Terra Cotta					
08MHTTS4MZ	4" Medium Bronze	4"x4"x16"			1/carton	6 lbs.
08MHTTS4PG	4" Patina Green					
08MHTTS4RB	4" Rock Brown					
08MHTTS4SG	4" Slate Gray					
08MHTTS4TC	4" Terra Cotta					
08MHTTS6MZ	6" Medium Bronze	6"x6"x16"	1/carton	6 lbs.		
08MHTTS6PG	6" Patina Green					
08MHTTS6RB	6" Rock Brown					
08MHTTS6SG	6" Slate Gray					
08MHTTS6TC	6" Terra Cotta					
BREATHER VENTS						
08MHTBV1MZ	1-Way Medium Bronze	4" Length; 8" Height			1/carton	2 lbs.
08MHTBV1PG	1-Way Patina Green					
08MHTBV1RB	1-Way Rock Brown					
08MHTBV1SG	1-Way Slate Gray					
08MHTBV1TC	1-Way Terra Cotta					
08MHTBV2MZ	2-Way Medium Bronze					
08MHTBV2PG	2-Way Patina Green					
08MHTBV2RB	2-Way Rock Brown					
08MHTBV2SG	2-Way Slate Gray					
08MHTBV2TC	2-Way Terra Cotta					
RVO VENT COLLAR COMBO						
08MHTVC1MZ	1-Way Medium Bronze	8-1/4" Diameter; 5-3/4" Length	1/carton	2 lbs.		
08MHTVC1PG	1-Way Patina Green					
08MHTVC1RB	1-Way Rock Brown					
08MHTVC1SG	1-Way Slate Gray					
08MHTVC1TC	1-Way Terra Cotta					
08MHTVC2MZ	2-Way Medium Bronze					
08MHTVC2PG	2-Way Patina Green					
08MHTVC2RB	2-Way Rock Brown					
08MHTVC2SG	2-Way Slate Gray					
08MHTVC2TC	2-Way Terra Cotta					

TPO Colorway product samples.



TPO ACCESSORIES



TPO CONTOUR RIB PROFILE

The Decorative Rib (TPO) is secured to a MuleHide Fully Adhered TPO roofing membrane to simulate the appearance of a standing seam metal roofing system.

TPO

Product Code	Description	Size	Carton	Weight
08MHTCR10W	White	10'	20 per	84 lbs.
08MHTCR10G	Gray			
08MHTCR10T	Tan			



TPO COATED METAL

A 24-gauge galvanized steel sheet coated with a layer of 0.035" non-reinforced TPO flashing. TPO Coated Metal is cut into the appropriate width and used to fabricate metal drip edges or other roof perimeter edging profiles. TPO membrane may be welded directly to the coated metal edging, eliminating the need to strip in the metal with a separate piece of membrane.

TPO

Product Code	Description	Size	Carton	Weight
08MHCM481W	White	4' x 10'	25 pieces per pallet	580 lbs.
08MHCM481G	Gray			
08MHCM481T	Tan			

Sold in FULL PALLET QTY Only!



TPO WALKWAY ROLL

TPO Walkway Roll incorporates an aggressive, non-slip, diamond plate tread pattern of polyester reinforced TPO material that offers excellent tear and puncture resistance. Walkway Rolls are trimmed in safety yellow along the length of the sheet to better define the walkway area. The yellow edges are smooth without safety lugs to allow for easier welding.

TPO

Product Code	Description	Roll	Coverage	Weight
08MHTW345W	White	34" x 50'	125 sq.ft.	97 lbs.
08MHTW345G	Gray			
08MHTW345T	Tan			



YELLOW PS WARNING STRIP

Intended for use on EPDM, TPO or PVC roofing systems to provide a visual warning of an impending hazard (i.e. roof edge, deep drain sump, skylight, etc.) Beneficial when maintenance personnel are frequently on the roof. Cannot be used for flashings or as a coverstrip.

EPDM

TPO

PVC

Requires the use of Tape Primer or Low-VOC Tape Primer.

Product Code	Description	Carton	Weight	Shelf Life
08MHTSC61Y	6" x 100'	2 per	41 lbs.	1 year



HP PROTECTIVE MAT

A nominal 6 ounce per square yard (140 grams per square meter) UV-resistant polypropylene needle-punched fabric. Can be used above the membrane as a slipsheet for crushed stone or pavers or below the membrane as a minimum underlayment mat for mechanically attached or ballasted system applications.

EPDM

TPO

PVC

Product Code	Description	Coverage	Weight
08MHPM153	15' X 300'	4,500 sq.ft.	225 lbs.



RUBBER PAVER BLOCKS

An environmentally friendly product that provides superior protection to the underlying membrane. Features a resilient, shock-absorbing, weather-resistant traffic surface. Pavers lock together to provide multi-directional drainage patterns eliminating the need for protective mats. Consists of 90% post-consumer recycled content.

EPDM

TPO

PVC

Product Code	Description	Dimensions	Weight
08MHP222BK	Black	2" x 24" x 24"	24 lbs.
08MHP222TC	Terra Cotta		

PVC

POLYVINYL CHLORIDE

PVC MEMBRANE (50-Mil, 60-Mil & 80-Mil) Used in mechanically attached and fully adhered roofing systems in new construction, reroofing and recover (retrofit) applications. It may also be used as flexible membrane flashings for walls, curbs, etc. when installing PVC membrane roofing systems. The system must be installed over acceptable roof insulation or other suitable substrate. See the MuleHide PVC Specifications Manual for complete specifications and details. The physical properties of the membrane are enhanced by a tenacious, weft-inserted polyester fabric. Meets or exceeds all requirements of ASTM D4434, Type III.



PVC MEMBRANE MINIMUM (60-Mil Minimum) Manufactured to a minimum 60-mil sheet thickness.

PVC KEE HP MEMBRANE (50-Mil, 60-Mil & 80-Mil) Manufactured using DuPont® Elvaloy® resin modifier and provides outstanding thermal stability and flexibility, extended upper and lower temperature performance limits and enhanced chemical resistance. The physical properties of the membrane are enhanced by a tenacious, weft-inserted polyester fabric. Meets or exceeds all requirements of ASTM D4434, Type III.

PVC FLEECE BACK MEMBRANE (45-Mil, 60-Mil, 80-Mil) Used in fully adhered and mechanically attached roofing systems in new construction, reroofing and recover (retrofit) applications.

PVC KEE HP FLEECE BACK MEMBRANE (45-Mil, 60-Mil, 80-Mil) Used in fully adhered roofing systems in new construction, reroofing and recover (retrofit) applications. The polyester fleece backing enhances the puncture-resistance of the membrane and can also serve as a built-in separation layer for rough surfaces or existing asphalt-based roofing systems.



Membrane Thickness

50-Mil

60-Mil

80-Mil



PVC ADHESIVES & SEALANTS



HYDROBOND® WATER-BASED PVC BONDING ADHESIVE

Designed to bond PVC membranes to a clean, dry, horizontal surface as a one-sided wet lay-in adhesive with slopes up to 2:12. HydroBond® can be used with both smooth back and fleece backed PVC membranes. Can also be used as a contact adhesive for vertical applications, such as flashings.

*Not approved for Standard PVC KEE HP

PVC



LOW-VOC PVC BONDING ADHESIVE

A high-strength solvent-based contact adhesive that allows bonding of PVC membranes to various porous and non-porous substrates. It is specially formulated using a blend of VOC-exempt and non-exempt solvents to be in compliance with the California Clean Air Act of 1988 (updated in 1997) and as further regulated by California's Air Quality Control Districts listing VOC limitations. Low-VOC PVC Bonding Adhesive is used for bonding PVC flashings and membranes to a variety of substrates.

PVC

Product Code	Description	Coverage	Shelf Life
08MHHBWA5	5-Gallon Pail	100-133 sq.ft. per gallon	1 year

Product Code	Description	Coverage	Shelf Life
08MHPBALV5	5-Gallon Pail	60 sq. ft. per gallon	1 year



AQUABASE 120 BONDING ADHESIVE

A two-sided water-based bonding-adhesive used to adhere EPDM, Standard TPO, TPO Fleece Back and PVC Fleece Back membranes to approved surfaces. Can be used as a one-sided, wet lay-in adhesive with MuleHide Fleece Back membranes. Low-temperature restrictions apply.

EPDM

TPO

PVC

Product Code	Description	Coverage	Shelf Life
08MHAB1205	5-Gallon Pail	100-120 sq.ft. per gallon	1 year



THERMOPLASTIC ONE-PART POURABLE SEALER (WHITE)

Designed for use with TPO, PVC & EPDM Pourable Sealer Pockets. The sealant's one-part, pourable consistency allows for quick pocket filling without mixing.

EPDM

TPO

PVC

Product Code	Description	Weight	Coverage	Shelf Life
08MHTPSWHE	1/2-Gallon Pouches (4 per carton)	29 lbs.	122 cu.in.	1 year



AEROWEB PVC LOW-VOC AEROSOL CONTACT ADHESIVE

MuleHide's AeroWeb PVC is a low-VOC Aerosol Contact Adhesive that can be used for a variety of applications: adhering PVC bareback membranes to a variety of horizontal substrates and vertical walls, and adhering Fleece Back membranes to vertical surfaces. AeroWeb PVC cannot be used with any KEE bareback membranes.

PVC

Product Code	Description	Carton	Shelf Life
08MHAWAPVC	AeroWeb LV Adhesive/Primer	1	1 Year
08MHCCGH6	6' Hose	1	N/A
08MHCCGH12	12' Hose	1	
08MHCCGH18	18' Hose	1	
08MHCCGSGN	Spray Gun (for vertical)	1	
08MHCCGSGV	Spray Gun with 24" extension (for horizontal)	1	



WATER CUT-OFF MASTIC

Used to seal roofing membranes to stop water penetration into the roofing system. Common uses are at drain terminations and behind MuleHide All Purpose Bars at wall terminations.

LOW-VOC WATER CUT-OFF MASTIC

EPDM

TPO

PVC

Product Code	Description	Weight	Coverage	Shelf Life
08MHWTRC	11-oz Tube	27 lbs.	10 Ln.ft. with 1/2" bead	1 year
08MHLWTRC	(25 per carton)			



UNIVERSAL SINGLE-PLY SEALANT

A 100% solids, solvent free, one-part, polyether sealant that provides a weather-tight seal to a variety of building substrates. Provides excellent adhesive to substrates such as stone, masonry, ceramic, marble, wood, steel, aluminum, most plastics and composites. Not recommended as a glass-glazing sealant.

EPDM TPO PVC

Product Code	Description	Weight	Coverage	Shelf Life
08MHUSPSWH	10.1-oz Tube (24 per carton)	24 lbs.	25 Ln.ft. with 1/4" bead	1 year



LOW-VOC MEMBRANE CLEANER

Used to clean both new and in-service EPDM, TPO, PVC and PVC KEE membranes prior to the seaming process. This cleaner helps to loosen and remove dirt and other contaminants from the membrane surface and leaves a suitable surface for welding or the subsequent application of Tape Primer.

*Meets California & Utah VOC regulations

EPDM TPO PVC

Product Code	Description	Carton	Coverage
08MHTLVMC1	1-Gallon Pail / Low-VOC*	2 per	400 sq.ft. (1-side) per gallon
08MHTLVMC5	5-Gallon Pail / Low-VOC*	1 per	

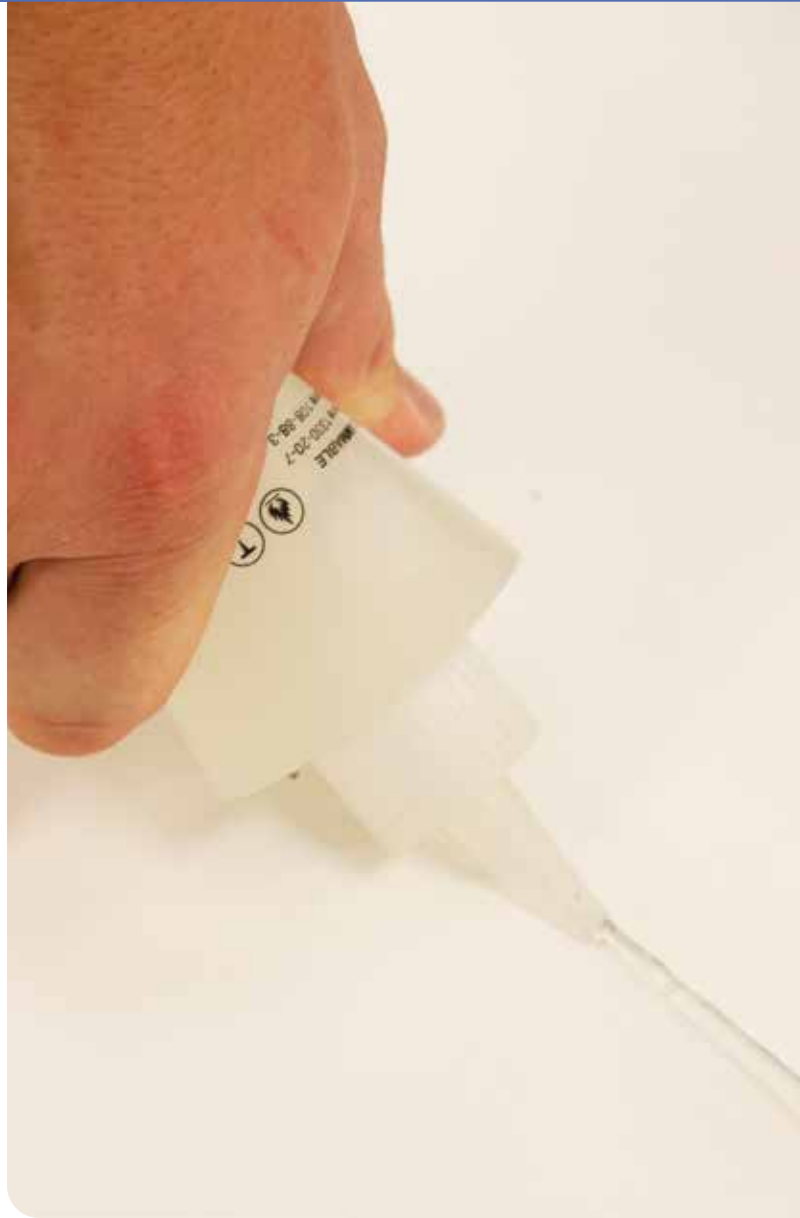


PVC UN-TACK (CLEANER)

PVC Un-Tack is designed to clean spray guns and hoses used to apply AeroWeb PVC. PVC Un-Tack can also be used to remove adhesives and primers from a variety of surfaces including single-ply membranes, accessories, metal, plastic, rubber, and glass. DO NOT use PVC UN-TACK for removal of AeroWeb Adhesive/Primer.

PVC

Product Code	Description	Carton	Shelf Life
08MHUTPVC	Low-VOC PVC Un-Tack	1	1 Year



PVC CUT EDGE SEALANT

A free-flowing polymeric material designed for use at the cut edge (exposed scrim) of MuleHide PVC reinforced membrane seams after the membrane has been welded to itself or to MuleHide PVC Coated Metal.

PVC

Product Code	Description	Coverage	Carton	Shelf Life
08MHPESPT	16-oz Bottle	225-275 lf 1/8" bead	12 per	1 year

PVC FLASHING



PVC PIPE SEALS

An injection molded, pre-formed flashing for single pipe penetrations made of MuleHide non-reinforced PVC material. Designed to add ease to the installation process while offering increased watertight security and improved aesthetics.

PVC

Product Code	Description	Size	Carton	Weight
08MHPP348W	White	3/4" to 8" OD	8 per	8 lbs.
08MHPP348G	Gray			
08MHPP348T	Tan			



PVC CONTOUR RIB PROFILE

The Decorative Rib (PVC) is secured to a MuleHide Fully Adhered PVC roofing membrane to simulate the appearance of a standing seam metal roofing system.

PVC

Product Code	Description	Size	Carton	Weight
08MHPCR10W	White	10'	20 per	84 lbs.
08MHPCR10G	Gray			
08MHPCR10T	Tan			



YELLOW PS WARNING STRIP

Intended for use on EPDM, TPO or PVC roofing systems to provide a visual warning of an impending hazard (i.e. roof edge, deep drain sump, skylight, etc.) Beneficial when maintenance personnel are frequently on the roof. Cannot be used for flashings or as a coverstrip.

EPDM

TPO

PVC

Requires the use of Tape Primer or Low-VOC Tape Primer.

Product Code	Description	Carton	Weight	Shelf Life
08MHTSC61Y	6" x 100'	2 per	41 lbs.	1 year



PVC SPLIT PIPE SEAL

Contains a split (cut) and overlap tab that allows the pipe-boot to be opened and wrapped around a round pipe with an obstruction. Such obstructions prevent the use of a standard pre-molded pipe boot. Made of 60-mil reinforced PVC membrane for pipes 1" to 6" in diameter.

PVC

Product Code	Description	Description	Carton
08MHPPSR1W	1" Pipe	White	8 per box
08MHPPSR2W	2" Pipe		
08MHPPSR3W	3" pipe		
08MHPPSR4W	4" Pipe		
08MHPPSR5W	5" Pipe		
08MHPPSR6W	6" Pipe		
08MHPPSR1G	1" Pipe	Gray	
08MHPPSR2G	2" Pipe		
08MHPPSR3G	3" pipe		
08MHPPSR4G	4" Pipe		
08MHPPSR5G	5" Pipe		
08MHPPSR6G	6" Pipe		
08MHPPSR1T	1" Pipe	Tan	
08MHPPSR2T	2" Pipe		
08MHPPSR3T	3" pipe		
08MHPPSR4T	4" Pipe		
08MHPPSR5T	5" Pipe		
08MHPPSR6T	6" Pipe		



PVC NON-REINFORCED FLASHING

Used for sealing joints of MuleHide PVC Coated Metal, drain details, field flashing pipes and other details where reinforced membrane or the use of pre-molded accessories are not feasible.

PVC

Product Code	Description	Size	Carton	Weight
08MHPF1250	White/Gray	12" x 50'	1 per	31 lbs.
08MHPF2450	White/Gray	24" x 50'		56 lbs.
08MHPF125T	White/Tan	12" x 50'		33 lbs.
08MHPF245T	White/Tan	24" x 50'		66 lbs.



INSIDE CORNERS

MuleHide PVC Inside Corners are uniform in shape and size and provide water tightness at inside corners formed by PVC coated metal and/or PVC flashing membrane. Provides a neat, finished look to building corners, curbs and parapet flashings with no cutting required.

PVC

Product Code	Description	Carton	Weight
08MHPICW	White	12 per	1 lbs.
08MHPICG	Gray/Tan		



PVC / PVC KEE HP COVER STRIP

Non-reinforced thermoplastic polyvinyl chloride-based membrane used for stripping in PVC or PVC KEE HP coated metal roof edging.

PVC

Product Code	Description	Size	Carton	Weight
08MHPCS87W	.080 White PVC	8"x75'	1 per	28
08MHPCS87G	.080 Gray PVC			24
08MHPCS87T	.080 Tan PVC			24
08MHPKC81W	.060 White PVC KEE	8"x100'	2 per	56
08MHPKC87W	.080 White PVC KEE	8"x75'	1 per	26
08MHPKC87G	.080 Gray PVC KEE			28
08MHPKC87T	.080 Tan PVC KEE			24



T-JOINT COVER

Used to seal step-offs at splice intersections. Installation is mandatory on all 60-mil and 80-mil PVC systems and on 45-mil systems where step-offs have not been properly sealed.

PVC

Product Code	Description	Size	Carton	Weight
08MHPTJPWH	White	4.5" circle	100 per	4 lbs.
08MHPTJPGY	Gray			
08MHPTJPTN	Tan			



OUTSIDE CORNERS

Uniform in shape and size and provide water-tightness at outside corners formed by PVC coated metal and/or PVC flashing membrane. Provides a neat, finished look to building corners, curbs and parapet flashings with no cutting required.

PVC

Product Code	Description	Carton	Weight
08MHPOCW	White/Gray	12 per	1 lbs.
08MHPOCG	Gray/Tan		



PVC PS COVER STRIP

A nominal 35-mil non-reinforced KEE HP flashing laminated to a nominal 35-mil, fully cured, pressure-sensitive, synthetic rubber adhesive. Used to strip in flat metal edgings (e.g. drip edge).

LOW-VOC PVC STEP 1 ACTIVATOR & STEP 2 PRIMER

This version meets requirements of California Rule 1168.

PVC

Product Code	Description	Carton	Weight
08MHPPS61W	White	2 per	44 lbs.
08MHPPS61G	Gray		
08MHPPS61T	Tan		
08MHPLVAC1	Low-VOC PVC Step 1 Activator	2 per	16 lbs.
08MHPLVPC1	Low-VOC PVC Step 2 Primer	2 per	19 lbs.
08MHPPRIM1	PVC Step 2 Primer	2 per	13 lbs.

PVC FLASHING



UNIVERSAL CORNERS

Uniform in shape and size and provide water-tightness at corners formed by PVC coated metal and/or PVC flashing membrane. Provides a neat, finished look to building corners, curbs and parapet flashings with no cutting or stretching required.

PVC

Product Code	Description	Carton	Weight
08MHPVCI0	White	20 per	5 lbs.



THROUGH WALL SCUPPER

The prefabricated membrane-coated scupper insert detail with heat-welded seams is a superior detail to the galvanized scupper sleeve and bonding adhesive alternative.

PVC

Product Code	Description	Clad Metal Through Wall Box		
		L	H	W
08MHPSC4W	PVC 4" Through Wall Scupper - White	16"	4"	4"
08MHPSC4G	PVC 4" Through Wall Scupper - Gray			
08MHPSC4T	PVC 4" Through Wall Scupper - Tan			
08MHPSC6W	PVC 6" Through Wall Scupper - White	16"	6"	6"
08MHPSC6G	PVC 6" Through Wall Scupper - Gray			
08MHPSC6T	PVC 6" Through Wall Scupper - Tan			



PVC MOLDED SEALANT POCKETS

Interlocking, two-piece prefabricated pockets of non-reinforced PVC material used to seal pipe clusters or other irregular shaped penetrations. Pockets length can be adjusted from 7-1/2" to 11-1/2" by following the pre-molded cutting lines.

PVC

Product Code	Description	Size	Carton	Weight
08MHPMSAPW	White	7-1/2" to 11-1/2"	5 per	5 lbs.



VENT COLLAR COMBO

Prefabricated flashing for hot stacks, dryer vents or static attic vents that come complete with painted metal sleeve and vent caps. Large target base patch allows for quick installation by simply screwing the metal sleeve to the deck and then welding the target base to the field membrane.

PVC

*Cannot be used on warranted projects.
For residential use only.*

Product Code	Description	Diameter	Height	Spacing
08MHPRVOCW	PVC Vent Collar Combo - White	8-1/4"	5-3/4"	1 per 1,500 sq ft
08MHPRVOCG	PVC Vent Collar Combo - Gray			
08MHPRVOCT	PVC Vent Collar Combo - Tan			



DROP SCUPPER

The prefabricated drop tube scupper with heat-welded seams is an excellent alternative and solution for a through roof soffit drain and downspout tie in. With an easy heat-weld flange for quick and watertight application.

PVC

*Cannot be used on warranted projects.
For residential use only.*

Product Code	Description	Dia.	Length
08MHPSCD2W	PVC 2" Drop Scupper - White	1-7/8"	7-1/2"
08MHPSCD2T	PVC 2" Drop Scupper - Tan	1-7/8"	
08MHPSCD2G	PVC 2" Drop Scupper - Gray	1-7/8"	
08MHPSCD3W	PVC 3" Drop Scupper - White	2-5/8"	
08MHPSCD3T	PVC 3" Drop Scupper - Tan	2-5/8"	
08MHPSCD3G	PVC 3" Drop Scupper - Gray	2-5/8"	



BREATHER VENTS

Prefabricated two-way, or static, vents allow proper ventilation of attic spaces below PVC membranes. The reinforced membrane flange allows for quick installation by centering vent over opening and welding to the field membrane.

PVC

Product Code	Description	Dia.	Length	Net Free Area	Spacing
08MHPBV1W	PVC 1-Way Breather Vent - White	4"	8"	N/A	1 per 1,000 sq ft
08MHPBV1G	PVC 1-Way Breather Vent - Gray				
08MHPBV1T	PVC 1-Way Breather Vent - Tan				
08MHPBV2W	PVC 2-Way Breather Vent - White			12-sq.in.	
08MHPBV2G	PVC 2-Way Breather Vent - Gray				
08MHPBV2T	PVC 2-Way Breather Vent - Tan				



PVC COATED METAL

A 24-gauge galvanized steel sheet coated with a layer of 0.035" non-reinforced PVC flashing. PVC Coated Metal is cut into the appropriate width and used to fabricate metal drip edges or other roof perimeter edging profiles. PVC membrane may be welded directly to the coated metal edging, eliminating the need to strip in the metal with a separate piece of membrane.

PVC

Product Code	Description	Size	Carton	Weight
08MHPVC41W	White	48" x 120"	25 pieces per pallet	520 lbs.
08MHPVC41G	Gray			
08MHPVC41T	Tan			

Sold in FULL PALLET QTY Only!



PVC WALKWAY ROLL

PVC Walkway Roll incorporates an aggressive, non-slip, tread pattern of polyester reinforced PVC material that offers excellent tear and puncture resistance.

PVC

Product Code	Description	Size	Coverage	Weight
08MHMH100	Gray	36" x 60'	180 sq.ft.	97 lbs.



HP PROTECTIVE MAT

A nominal 6 ounce per square yard (140 grams per square meter) UV-resistant polypropylene needle-punched fabric. Can be used above the membrane as a slipsheet for pavers or below the membrane as a minimum underlayment mat for mechanically attached systems.

EPDM

TPO

PVC

Product Code	Description	Coverage	Weight
08MHPM153	15' X 300'	4,500 sq.ft.	225 lbs.



RUBBER PAVER BLOCKS

An environmentally friendly product that provides superior protection to the underlying membrane. Features a resilient, shock-absorbing, weather-resistant traffic surface. Pavers lock together to provide multi-directional drainage patterns eliminating the need for protective mats. Consists of 90% post-consumer recycled content.

EPDM

TPO

PVC

Product Code	Description	Dimensions	Weight
08MHP222BK	Black	2" x 24" x 24"	24 lbs.
08MHP222TC	Terra Cotta		

Mod Bit

APP TORCH PREMIER MEMBRANES

APP TORCH G PREMIER (4.5 mm, 100 ft² coverage per roll) Premium, polyester reinforced APP modified bitumen roofing membranes specially designed for heat-welded (torch) applications. Constructed with premium atactic polypropylene resins and incorporating superior polyester reinforcing, APP Torch G provides an exceptionally durable roofing product which is easy to install and will provide long-term weathering. APP Torch G has a granulated surface that is available in several colors and has a polyolefin backing. Exceeds all minimum ASTM standards for tensile strength, puncture-resistance and flexibility. Meets ASTM D6222 Type 1 requirements. Also available in FR.

APP TORCH S PREMIER (4 mm, 100 ft² coverage per roll) Premium, polyester reinforced APP modified bitumen roofing membranes specially designed for heat-welded (torch) applications. Constructed with premium atactic polypropylene resins and incorporating superior polyester reinforcing, APP Torch S provides an exceptionally durable roofing product which is easy to install and will provide long-term weathering with a smooth surface and a polyolefin backing. Torch APP S exceeds all minimum ASTM standards for tensile strength, puncture-resistance and flexibility. Meets ASTM D6222 Type 1 requirements. Also available in FR.

APP TORCH BASE PREMIER (2 mm, 200 ft² coverage per roll) APP modified bitumen roofing membrane base sheet, reinforced with a fiberglass mat, saturated and coated with a polymerized asphaltic compound, and has exceptional waterproofing and weatherability characteristics. Top and bottom surfaces are finished with a poly film. Meets ASTM D6509 Type 1 requirements.

G2 BASE (50-Mil, 315 ft² coverage per roll) A fiberglass mat coated with an oxidized asphalt blend, which provides enhanced weathering and aging characteristics. G2 Base is designed as a base sheet for built-up and modified roofing applications. Provides great tear and pull through resistance. Meets or exceeds ASTM D4601.

NAIL BASE (2 mm, 200 ft² coverage per roll) Premium polyester reinforced, fire retardant modified bitumen membrane manufactured to meet the toughest industry and code requirements. Manufactured with a styrene butadiene styrene (SBS) modified asphalt compound that exhibits exceptional waterproofing and weathering properties. Finished with a polyolefin film with printed lay lines on the top surface. Meets ASTM D6163 Type 1, Grade S.



Mod Bit

SELF-ADHERING MEMBRANES

SA-SBS CAP SHEET (3.3 mm, 100 ft² coverage per roll) A premium polyester-reinforced modified bitumen membrane manufactured to meet the toughest industry and code requirements. Manufactured with advanced dual-compound technology, whereby the membrane consists of a styrene butadiene styrene (SBS) modified asphalt compound on top and a pressure-sensitive adhesive compound on the bottom. The adhesive is covered with a split release liner. Finished with granules on the top surface, except for the selvedge edge and end lap, which are granule free. Also used as a flashing membrane in all applicable specifications. Meets ASTM D6164 Type 1, Grade G (granular) / ASTM D1970. Also available in FR.

SA-APP CAP SHEET (3.3 mm, 100 ft² coverage per roll) Premium polyester-reinforced modified bitumen membrane manufactured to meet the toughest industry and code requirements. Manufactured with advanced dual-compound technology, whereby the membrane consists of an atactic polypropylene (APP) modified asphalt compound on top and a pressure-sensitive adhesive compound on the bottom. The adhesive is covered with a split release liner. Finished with granules on the top surface, except for the selvedge edge and end lap, which are granular free. Also used as a flashing membrane in all applicable specifications. Meets ASTM D6222 Type 1, Grade G (granular) / ASTM D1970. Also available in FR.

SA BASE SHEET (2 mm, 200 ft² coverage per roll) A premium polyester-reinforced, fire retardant modified bitumen membrane manufactured to meet the toughest industry and code requirements. Manufactured with advanced dual-compound technology, whereby the membrane consists of a styrene butadiene styrene (SBS) modified asphalt compound on top and a pressure-sensitive adhesive compound on the bottom. The adhesive is covered with a split release liner. Finished with a polyolefin film with printed lay lines on the top surface. Meets ASTM D6163 Type 1, Grade S (smooth) / ASTM D1970. Also available in FR.

In order to perform properly, MuleHide Self-Adhering membranes require a minimum application temperature of 40°F and rising for 48 continuous hours.



MODIFIED BITUMEN MEMBRANES

CAP SHEET COLOR SELECTION:



White



Black



Weatherwood



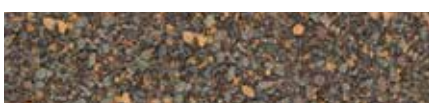
Buff



Chestnut



Oak



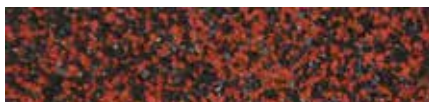
Heather Blend



Gray Slate



Pine Green



Red Blend



KoolCap®

Product Name	Description	Coverage	Weight	Carton
BASE SHEETS				
SA Base Sheet	Self-Adhesive SBS Base Sheet Inter-Ply with Polyolefin Film Surface Glass Fiber Mat ASTM D6163 Type I, Grade S / D1970	200 ft ²	95 lbs.	2 Sq. Roll
SA Base Sheet FR	Self-Adhesive SBS Fire-Retardant Base Sheet Inter-Ply with Polyolefin Film Surface Glass Fiber Mat ASTM D6163 Type I, Grade S / D1970	200 ft ²	94 lbs.	2 Sq. Roll
Nail Base	SBS Base Sheet Polyfilm Top Sand Bottom Glass Fiber Mat ASTM D6163 Type I	200 ft ²	106 lbs.	2 Sq. Roll
APP Torch Base Premier	Fiberglass Mat Saturated and Coated with a Polymerized Asphalt Compound ASTM D6509 Type I	200 ft ²	90 lbs.	2 Sq. Roll
APP Torch S	Polyester Reinforcing Constructed with Premium Atactic Polypropylene Resins ASTM D6222 Type I	200 ft ²	90 lbs.	2 Sq. Roll
G2 Base	Fiberglass Mat Coated with Oxidized Asphalt ASTM D4601 Type II	300 ft ²	82 lbs.	3 Sq. Roll
TORCH CAP SHEETS				
APP Torch G Premier	ASTM D6222 Type I	100 ft ²	110 lbs.	1 Sq. Roll
APP Torch G FR Premier	ASTM D6222 Type I, Grade G	100 ft	110 lbs.	1 Sq. Roll
APP Torch S Premier	APP Non-Granular (Smooth) Surface ASTM D6222 Type I, Grade S	100 ft ²	89 lbs.	1 Sq. Roll
App Torch G KoolCap®	ASTM D6222 Type I, Grade G	100 ft ²	110 lbs.	1 Sq. Roll
APP Torch G FR KoolCap®	ASTM D6222 Type I, Grade G	100 ft ²	117 lbs.	1 Sq. Roll
APP Torch G	APP Granular Surface Non-Woven Polyester Mat ASTM D6222 Type I	100 ft ²	100 lbs.	1 Sq. Roll
SELF-ADHERING CAP SHEETS				
SA-APP Cap Sheet	APP Granular Surface Non-Woven Polyester Mat ASTM D6222 Type I, Grade G / D1970	100ft ²	89 lbs.	1 Sq. Roll
SA-APP Cap Sheet FR	APP Fire-Retardant Granular Surface Non-Woven Polyester Mat ASTM D6222 Type I, Grade G / D1970	100 ft ²	89 lbs.	1 Sq. Roll
SA-SBS Cap Sheet	SBS Granular Surface Non-Woven Fiberglass Mat ASTM D6164 Type I, Grade G / D1970	100 ft ²	84 lbs.	1 Sq. Roll
SA-SBS Cap Sheet FR	SBS Fire-Retardant Granular Surface Non-Woven Fiberglass Mat ASTM D6164 Type I, Grade G / D1970	100 ft ²	84 lbs.	1 Sq. Roll
SA-APP KoolCap®	APP Non-Woven Polyester Mat ASTM D6222 Type I	100 ft ²	90 lbs.	1 Sq. Roll
SA-APP KoolCap® FR	APP Fire-Retardant Non-Woven Polyester Mat ASTM D6222 Type I	100 ft ²	90 lbs.	1 Sq. Roll

MODIFIED BITUMEN ADHESIVES & SEALANTS



KOOLCAP® TOUCH UP

KoolCap® Touch Up is a highly-reflective coating specially designed for use with our KoolCap® G membranes. It is bright white in color and is designed to help extend the life and enhance the performance of KoolCap® roofing system. KoolCap® Touch Up is a water-based product and environmentally friendly.

Mod Bit

Product Code	Description	Coverage	Shelf Life
09MHKCTU1	KoolCap Touch Up	500 sq. ft. per can	1.5 years



MOD BIT GRANULES

High-quality mineral granules used on mineral-surfaced membrane products. Tough, dense, ceramic-coated particles are weather and UV resistant. Composed of a granite-like mineral permanently coated with various pigments to match MuleHide Mod Bit Cap Sheet products.

Product Code	Granule Colors	Description
09MHGRWH	White	5-Gallon Pail
09MHGRBK	Black	
09MHGRWW	Weatherwood	
09MHGRBU	Buff	
09MHGRCH	Chestnut	
09MHGROA	Oak	
09MHGRHB	Heather Blend	
09MHGRSL	Gray Slate	
09MHGRPG	Pine Green	
09MHGRRB	Red Blend	
09MHGRGR	Green (Special Order)	
09MHGRRD	Red (Special Order)	



121 ASPHALT PRIMER

A general-purpose penetrating asphalt primer used to promote adhesion prior to the application of hot-mopped, cold-applied and self-adhesive membrane systems, as well as roof cements, mastics and asphalt-based adhesives.

*Miami Dade County Approved.
Meets ASTM D41.*

Product Code	Description	Coverage	Shelf Life
16MH1214	14 oz can (30/carton)	30 sq.ft. per can	2 years
16MH1215	5-Gallon Pail	1-Gallon per	
16MH12150	50-Gallon Drum	100 sq. ft.	



420 MOD BIT ADHESIVE - BRUSH GRADE

A brush-grade select formulation for use as a cold-applied bonding agent for SBS modified bitumen base sheets and SBS modified bitumen cap sheets.

*Miami Dade County Approved.
Meets ASTM D3019.*

Mod Bit

Product Code	Description	Coverage	Shelf Life
16MH4205	5-Gallon Brush Grade	1-1.5-Gallon per sq.	18 Months



421 MOD BIT ADHESIVE - TROWEL GRADE

A high-quality trowel-grade formulation for use as a cold-applied bonding agent for SBS modified bitumen roof systems. Heavy, trowel-grade consistency makes this product ideal for flashing details, attachment of membrane to steep slopes and parapet walls and a variety of waterproofing repairs, especially at moving joints where its flexibility and elasticity make it superior to standard plastic cements. In addition, the formulation is non-destructive to asphalt-based roofing membranes.

Mod Bit

*Miami Dade County Approved.
Meets ASTM D4586, D3409.*

Product Code	Description	Coverage	Shelf Life
16MH4213	3-Gallon Trowel Grade	8-Gallon per sq.	2 years
16MH4215	5-Gallon Trowel Grade		



MULTI-SYSTEM ACCESSORIES - FASTENERS/PLATES/BARS



EHD FASTENERS

EHD Fastener (#15) is engineered for lap attachment to corrugated steel (18 – 22 ga.) and wood substrates in higher wind uplift roof assemblies. Featuring a #2 double flute self-drilling point and exclusive tapered entry thread design, penetrating steel quickly and offering exceptional back-out resistance.

Product Code	Size	Carton	Weight
08MHXH14	1-1/4"	1000	14.4 lbs.
08MHXH2	2"	1000	21.3 lbs.
08MHXH3	3"	1000	28.6 lbs.
08MHXH4	4"	1000	37.7 lbs.
08MHXH5	5"	1000	46.4 lbs.
08MHXH6	6"	500	28.2 lbs.
08MHXH7	7"	500	32.7 lbs.
08MHXH8	8"	500	38.1 lbs.
08MHXH92	9"	250	43.2 lbs.
08MHXH102	10"	250	23.2 lbs.
08MHXH112	11"	250	25.3 lbs.
08MHXH122	12"	250	28.6 lbs.
08MHXH14	14"	250	33.2 lbs.
08MHXH16	16"	250	37.9 lbs.
08MHXH18	18"	250	42.5 lbs.
08MHXH20	20"	250	46.7 lbs.
08MHXH22	22"	250	51.7 lbs.
08MHXH24	24"	250	56.4 lbs.



ALL PURPOSE BAR

All Purpose Bar is designed for use as an anchor bar for attachment of MuleHide EPDM membranes. May be installed in the field seam as a batten bar and used at the base of curbs, parapet walls and angle changes as an anchor bar. It can also be used with any MuleHide single-ply membranes as a termination bar. Refer to the MuleHide Single-Ply Manuals for specific use and installation instructions.

Product Code	Description	Size/ Carton	Weight
08MHAP10	ALL PURPOSE BAR	10 LF per piece 50 / tube	49 lbs.
08MHTB75	TB-75 TERMINATION BAR	10 LF per piece 50 / tube	
08MHTB90	TB-90 TERMINATION BAR	10 LF per piece 50 / tube	
08MHTB125	TB-125 TERMINATION BAR	10 LF per piece 50 / tube	
08MHRD100	RD-100 RETAINING DRAINBAR	10 LF per piece 10 / tube	42 lbs.



HDP FASTENERS

HDP Fastener (#14) is engineered to secure insulation, coverboards, base sheets and single-ply roof membrane systems to corrugated steel (16 - 22 ga.), wood, and concrete substrates. Featuring a #2 double flute self-drilling point and exclusive tapered entry thread design, penetrating steel quickly and offering exceptional back-out resistance.

Product Code	Size	Carton	Weight
08MHHD112	1-1/2"	1000	12.9 lbs.
08MHHD2	2"	1000	15.5 lbs.
08MHHD212	2-1/2"	1000	19.4 lbs.
08MHHD3	3"	1000	23.7 lbs.
08MHHD312	3-1/2"	1000	28.7 lbs.
08MHHD4	4"	1000	30.9 lbs.
08MHHD412	4-1/2"	1000	33.6 lbs.
08MHHD5	5"	1000	37.3 lbs.
08MHHD512	5-1/2"	1000	40.8 lbs.
08MHHD6	6"	1000	44 lbs.
08MHHD7	7"	500	25.9 lbs.
08MHHD8	8"	500	29.7 lbs.
08MHHD925	9"	250	32.9 lbs.
08MHHD1025	10"	250	36.7 lbs.
08MHHD1125	11"	250	41.4 lbs.
08MHHD1225	12"	250	43.5 lbs.



DRILL POINT FASTENERS

Drill Point Fasteners (#12) are specifically engineered to secure insulation, coverboards and base sheets to corrugated steel (16 – 22 ga.) and wood substrates. Featuring a #2 double flute self-drilling point and exclusive tapered entry thread design, penetrating steel quickly and offering exceptional back-out resistance. Available with #3 Phillips Head.

Product Code	Size	Carton	Weight
08MHDP158	1-5/8"	1000	11.8 lbs.
08MHDP214	2-1/4"	1000	16.2 lbs.
08MHDP3	3"	1000	21 lbs.
08MHDP44	4"	1000	26 lbs.
08MHDP5	5"	1000	31.5 lbs.
08MHDP6	6"	1000	37.1 lbs.
08MHDP75	7"	500	20.9 lbs.
08MHDP85	8"	500	23.9 lbs.



TL FASTENER

TL Fastener is designed to mechanically attach rigid insulation board and single-ply membrane to structural cement wood fiber, gypsum and lightweight insulating concrete roof decks. Features a high-thread profile with a tapered root diameter and sharp point. Its unique design allows it to penetrate the roof deck and progressively compact the base material, creating a stronger hold in weak material. Used in conjunction with the 2" TL Seam Plate and 3" TL Insulation Plate.

Product Code	Size	Carton	Weight
08MHTL2	2"	500	12 lbs.
08MHTL212	2-1/2"	500	13 lbs.
08MHTL3	3"	500	15 lbs.
08MHTL312	3-1/2"	500	16 lbs.
08MHTL4	4"	500	19 lbs.
08MHTL412	4-1/2"	500	21 lbs.
08MHTL5	5"	500	23 lbs.
08MHTL512	5-1/2"	500	25 lbs.
08MHTL6	6"	500	26 lbs.
08MHTL612	6-1/2"	500	28 lbs.
08MHTL7	7"	250	15 lbs.
08MHTL8	8"	250	17 lbs.
08MHTL9	9"	250	20 lbs.
08MHTL10	10"	250	22 lbs.

TL Plates

Product Code	Size	Carton	Weight
08MHTLP3	3" INSULATION	500	14 lbs.
08MHTLP2	2" SEAM	1000	17 lbs.



PFC PURLIN DRILL POINT

PFC Purlin Drill Point (#12) is a self-drilling fastener engineered to secure single-ply roofing membrane to structural steel purlins (16 ga. to 3/16") in standing seam metal roof recover applications. The specially designed 3/4" long pilot point prevents the existing metal roof panel from jacking up the threads during the drilling operation, thereby reducing point burnout and breakage.

Product Code	Size	Carton	Weight
08MHPUP138	1-3/8"	2500	27.8 lbs.
08MHPUP234	2-3/4"	1000	20.4 lbs.
08MHPUP334	3-3/4"	1000	27.4 lbs.
08MHPUP434	4-3/4"	1000	36.5 lbs.
08MHPUP534	5-3/4"	1000	41.8 lbs.
08MHPUP634	6-3/4"	1000	49.3 lbs.
08MHPUP734	7-3/4"	500	28.1 lbs.
08MHPUP834	8-3/4"	500	31.7 lbs.



2.4" SEAM PLATE

A round Galvalume-coated metal plate with (14) barbed anchors and reinforcing ribs for superior wind uplift resistance. Designed for the mechanical attachment of the MuleHide Reinforced EPDM, PVC and TPO membranes. The 2.4" Seam Plates can also be used with MuleHide HDP Fasteners, EHD Fasteners, reinforced 6" wide RMS or 6" wide and 10" wide RUSS™ Strip.



Product Code	Size	Carton	Weight
08MHBS241	2.4" SEAM PLATE	1000	52 lbs.

3" INSULATION PLATE

3" Insulation Plates are round Galvalume-coated metal plates with reinforcing ribs for superior wind uplift resistance. Designed specifically for the mechanical attachment of MuleHide Poly ISO insulation boards and other FM Approved insulation/cover boards.



Product Code	Size	Carton	Weight
08MHGLV3	3" INSULATION	1000	34 lbs.

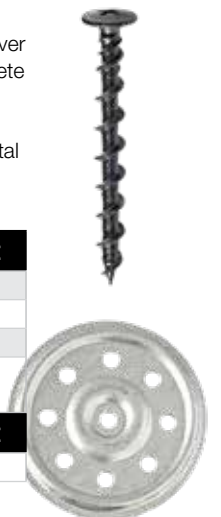
DEEP THREAD LWG FASTENER

LWG Fasteners are engineered to secure insulation, cover boards and base sheets to lightweight insulating concrete (LWIC) and gypsum decks. The LWG Fastener features an exclusive thread design engineered for exceptional pullout. When used in conjunction with the LWG 3" Metal Plate, multiple fasteners can be installed to achieve the required minimum pullout.

Product Code	Size	Carton	Weight
08MHLWG214	2-1/4"	1000	19 lbs.
08MHLWG314	3-1/4"	1000	20 lbs.
08MHLWG414	4-1/4"	1000	33 lbs.

LWG Plate

Product Code	Size	Carton	Weight
08MHLWGPL3	3"	1000	34 lbs.



MULTI-SYSTEM ACCESSORIES - FASTENERS/PLATES/BARS



PRE-ASSEMBLED FASTENER SYSTEM

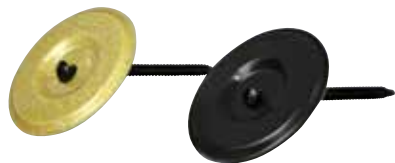
Pre-Assembled Fastener System offers a simple, economical and ergonomic "system solution" to increase the productivity in the mechanical attachment of roof insulation boards. The system includes a pre-assembled Drill Point Fastener (#12) with Phillips head style and 3" Galvalume Plate or a Drill Point Fastener (#12) and 3" Recessed Galvalume Plate, a Magnetic Setter Tool, 29" Stand-up Electric Power tool and a Canvas Fastener Bag.

Product Code	Size	Carton	Weight
08MHPAD158	1-5/8"	250	16 lbs.
08MHPAD214	2-1/4"	250	17 lbs.
08MHPAD3	3"	250	17 lbs.
08MHPAD4	4"	250	18 lbs.
08MHPAD5	5"	250	22 lbs.
08MHPAD6	6"	250	23 lbs.
08MHPAD7	7"	200	15 lbs.
08MHPAD8	8"	200	17 lbs.

STAINLESS STEEL TERMINATION BARS

All Purpose Bar is designed for use as an anchor bar for attachment of MuleHide EPDM membranes. May be installed in the field seam as a batten bar and used at the base of curbs, parapet walls and angle changes as an anchor bar. Also be used with any MuleHide single-ply membranes as a termination bar. Refer to the MuleHide Single-Ply Manuals for specific use and installation instructions.

Product Code	Description	Size/Carton	Weight
08MHSTB75	TB-75 STAINLESS STEEL BAR	10 LF per piece 20 / tube	98 lbs.
08MHSTB125	TB-125 STAINLESS STEEL BAR	10 LF per piece 20 / tube	49 lbs.



INDUCTION WELD PLATES

The Induction Weld Plates for TPO or PVC Fastening Plate is designed to attach the roofing membrane from the underside using the RhinoBond induction-welding tool.

Product Code	Size	Carton	Weight	Color
08MHPIWPL3	3" PVC - Induction Weld	500	37 lbs.	White
08MHTIWPL3	3" TPO - Induction Weld	500	37 lbs.	Bronze
08MHRBPP3	3" PVC - RhinoBond	500	37 lbs.	Black
08MHRBTP3	3" TPO - RhinoBond	500	37 lbs.	Gold



#14 HEAVY DUTY BI-METAL STAINLESS STEEL FASTENERS

#14 HD Fasteners is an ideal "all-purpose fastener" for use in steel, structural concrete, and wood decks for insulation or lap attachment. Allow a minimum of 1" penetration through the underside of steel decks and a minimum of 1" embedment in wood plank.

Product Code	Size	Carton	Weight
08MHSTS112	1-1/2"	1000	12 lbs.
08MHSTS2	2"	1000	15.2 lbs.
08MHSTS3	3"	1000	22.7 lbs.
08MHSTS4	4"	1000	29.6 lbs.
08MHSTS5	5"	1000	36.4 lbs.
08MHSTS6	6"	1000	43.6 lbs.
08MHSTS75	7"	500	25.5 lbs.
08MHSTS85	8"	500	28.3 lbs.
08MHSTS102	10"	250	35.2 lbs.
08MHSTS122	12"	250	43.8 lbs.



TRU-SPIKE FASTENERS

A one-piece, vibration-resistant anchor designed to attach insulation, single-ply roofing, wood and steel to structural concrete roof decks and walls. Featuring an "S" shaped configuration at the working end to create an expansion mechanism, it provides a fast, reliable fastening solution for roof applications over structural concrete surfaces.

Product Code	Size	Carton	Weight
08MHTS114	1-1/4"	500	13 lbs.
08MHTS112	1-1/2"	500	14 lbs.
08MHTS2	2"	500	16 lbs.
08MHTS212	2-1/2"	500	19 lbs.
08MHTS3	3"	500	21 lbs.
08MHTS312	3-1/2"	500	24 lbs.
08MHTS4	4"	500	26 lbs.
08MHTS412	4-1/2"	500	32 lbs.
08MHTS5	5"	500	34 lbs.
08MHTS512	5-1/2"	500	38 lbs.
08MHTS6	6"	250	22 lbs.
08MHTS612	6-1/2"	250	23 lbs.
08MHTS7	7"	250	24 lbs.
08MHTS712	7-1/2"	250	26 lbs.
08MHTS8	8"	250	27 lbs.
08MHTS9	9"	250	31 lbs.
08MHTS10	10"	250	34 lbs.
08MHTS11	11"	100	14.8 lbs.
08MHTS12	12"	100	16 lbs.
08MHTS13	13"	100	17.6 lbs.
08MHTS14	14"	100	19 lbs.
08MHTS15	15"	100	19 lbs.
08MHTS16	16"	100	19 lbs.

MULTI-SYSTEM ACCESSORIES - HELIX MAX



HELIX® MAX LOW-RISE ADHESIVE

Helix Max Low-Rise Adhesive is a VOC-free, construction-grade, two-component polyurethane adhesive designed to bond approved roof insulations and Fleece Back (TPO, PVC or PVC KEE) membranes to a variety of substrates.



CARTRIDGES

Product Code	Description	Coverage	Carton	Weight
08MHMDCC4	Dual Cartridge	4" Bead = 1-2 sq 6" Bead = 2-3 sq 12" Bead = 4-6 sq	4 per ctn w/ 5 Tips	20 lbs.

Included in carton: 5 static mixing tips

TANKS & ACCESSORIES

Product Code	Description	Coverage	Carton	Weight
08MHMTNKA	Low-Rise Adhesive Tank Part A	4" Bead = 11-13 sq 6" Bead = 17-19 sq 12" Bead = 35-37 sq	1 per ctn w/ Gun Assembly & 10 Tips	59 lbs.
08MHMTNKB	Low-Rise Adhesive Tank Part B		1 per ctn	57 lbs.
08MHMTKNT	Tank Nozzle Tips		10 per ctn	3 lbs.
08MHMTKET	Tank Nozzle 14" Extension Tips	NA	10 per ctn	4 lbs.
08MHMTKGH	Tank Replacement Gun and 25' Hose		1 per ctn	6 lbs.

Included with Part A is the following: 25' hose/gun assembly, 10 tank static mixing tips, 10 extension tubes, petroleum jelly, and one wrench.

JUGS

Product Code	Description	Coverage	Carton	Weight
08MHMPA5	Low-Rise Adhesive 5 Gallon Jug - Part A	4" Bead = 6.7-9 sq 6" Bead = 10-12.5 sq 12" Bead = 17.5-25 sq	1 each	51 lbs.
08MHMPB5	Low-Rise Adhesive 5-Gallon Jug - Part B			44 lbs.

DRUMS

Product Code	Description	Coverage	Carton	Weight
08MHMPA15	Low-Rise Adhesive 15-Gallon Drum Part A	4" Bead = 21-27 sq 6" Bead = 30-45 sq 12" Bead = 60-75 sq	1 each	150 lbs.
08MHMPB15	Low-Rise Adhesive 15-Gallon Drum - Part B			135 lbs.
08MHMPA50	Low-Rise Adhesive 50-Gallon Drum - Part A	4" Bead = 67-90 sq 6" Bead = 100-150 sq 12" Bead = 200-250 sq		540 lbs.
08MHMPB50	Low-Rise Adhesive 50-Gallon Drum - Part B			513 lbs.

ACCESSORIES

Product Code	Description	Coverage	Carton	Weight
08MHSSMT	Static Mix Tips	1	20 per ctn	3 lbs.

These tips are used with cartridges and all bulk containers of Helix Max.

MULTI-SYSTEM ACCESSORIES - ROOF DRAINS



NEW CONSTRUCTION ROOF DRAINS

- Clamping ring underside is ribbed and embossed to help secure membrane to drain ring
- Design forces drainage, restricting water flow swirling effects
- Increase water flow with elevated strainer ring risers
- Maximize drainage: Heavy duty epoxy-coated aluminum clamping ring – 1-1/4" high with 12 scallops and seep holes on the bottom
- Meets and exceeds ANSI, ASEE, PDI and IAPMO plumbing standards
- Flexible rubber coupling connects to PVC or cast iron pipe
- Aluminum underdeck clamp fastens drain securely to deck

PVC ROOF DRAIN KIT (FOR NEW INSTALLATION)

Product Code	Description	Flange Dia.	Strainer Type	Strainer Dia.	Weight
17MHPNDK3	3" PVC	10"	Plastic	10"	8 lbs.
17MHPNDK4	4" PVC				
17MHPNDK5	5" PVC				
17MHPNDK6	6" PVC	15"		12"	27 lbs.



CAST IRON ROOF DRAIN KIT (FOR NEW INSTALLATION)

Product Code	Description	Flange Dia.	Strainer Type	Strainer Dia.	Weight
17MHCINDK3	3" Cast Iron	10"	Plastic	10"	14 lbs.
17MHCINDK4	4" Cast Iron				16 lbs.
17MHCINDK5	5" Cast Iron				32 lbs.
17MHCINDK6	6" Cast Iron	15"		12"	34 lbs.
17MHCINDK8	8" Cast Iron				
17MHCINDK0	10" Cast Iron				

RETROFIT ROOF DRAINS

- Meets and exceeds ANSI/SPRI RD1 for water flow
- Clamping ring underside is ribbed and embossed to help secure membrane to drain ring
- Design forces drainage, restricting water flow swirling effects
- Increase water flow with elevated strainer ring risers
- Large stud diameter increases hardware strength
- TPO- and PVC-coated flange options offer cost-effective solution for contractors who prefer to heat-weld to flange

COPPER RETROFIT DRAIN with SEALANT TAPE



Product Code	Description	Weight	Flange Dia.	Outlet Length	Strainer Type	Strainer Dia.
17MHRDT2	2" Copper	6 lbs.				
17MHRDT2T	2" Copper - TPO Coated Flange					
17MHRDT2P	2" Copper - PVC Coated Flange					
17MHRDT2A	2" Copper - Asphalt Coated Flange					
17MHRDT3	3" Copper					
17MHRDT3T	3" Copper - TPO Coated Flange					
17MHRDT3P	3" Copper - PVC Coated Flange	7 lbs.	14"	9"	Plastic	10"
17MHRDT3A	3" Copper - Asphalt Coated Flange					
17MHRDT4	4" Copper					
17MHRDT4T	4" Copper - TPO Coated Flange					
17MHRDT4P	4" Copper - PVC Coated Flange					
17MHRDT4A	4" Copper - Asphalt Coated Flange					
17MHRDT5	5" Copper	9 lbs.				
17MHRDT5T	5" Copper - TPO Coated Flange					
17MHRDT5P	5" Copper - PVC Coated Flange					
17MHRDT5A	5" Copper - Asphalt Coated Flange					
17MHRDT6	6" Copper					
17MHRDT6T	6" Copper - TPO Coated Flange					
17MHRDT6P	6" Copper - PVC Coated Flange					
17MHRDT6A	6" Copper - Asphalt Coated Flange					



ALUMINATOR RETROFIT DRAIN with MAXXFLO SEAL (INCLUDES 1 TOOL PER CARTON)

Product Code	Description	Weight	Flange Dia.	Outlet Length	Strainer Type	Strainer Dia.
17MHALRD3	3" Aluminum	10 lbs.	16"	12"	Aluminum	10"
17MHALRD3T	3" Aluminum - TPO Coated Flange					
17MHALRD3P	3" Aluminum - PVC Coated Flange					
17MHALRD3A	3" Aluminum - Asphalt Coated Flange					
17MHALRD4	4" Aluminum	12 lbs.				
17MHALRD4T	4" Aluminum - TPO Coated Flange					
17MHALRD4P	4" Aluminum - PVC Coated Flange					
17MHALRD4A	4" Aluminum - Asphalt Coated Flange					
17MHALRD5	5" Aluminum	14 lbs.				
17MHALRD5T	5" Aluminum - TPO Coated Flange					
17MHALRD5P	5" Aluminum - PVC Coated Flange					
17MHALRD5A	5" Aluminum - Asphalt Coated Flange					
17MHALRD6	6" Aluminum					
17MHALRD6T	6" Aluminum - TPO Coated Flange					
17MHALRD6P	6" Aluminum - PVC Coated Flange					
17MHALRD6A	6" Aluminum - Asphalt Coated Flange					
17MHALRD8	8" Aluminum					
17MHALRD8T	8" Aluminum - TPO Coated Flange					
17MHALRD8P	8" Aluminum - PVC Coated Flange					
17MHALRD8A	8" Aluminum - Asphalt Coated Flange					

Note: One MAXXFLO tool is packed into each Aluminator carton. Additional tools can be purchased by calling Customer Service.



ALUMINUM RETROFIT DRAIN with SEALANT TAPE

Product Code	Description	Weight	Flange Dia.	Outlet Length	Strainer Type	Strainer Dia.
17MHARDT2	2" Aluminum	6 lbs.	16"	12"	Plastic	10"
17MHARDT2T	2" Aluminum - TPO Coated Flange					
17MHARDT2P	2" Aluminum - PVC Coated Flange					
17MHARDT2A	2" Aluminum - Asphalt Coated Flange					
17MHARDT3	3" Aluminum					
17MHARDT3T	3" Aluminum - TPO Coated Flange					
17MHARDT3P	3" Aluminum - PVC Coated Flange					
17MHARDT3A	3" Aluminum - Asphalt Coated Flange					
17MHARDT4	4" Aluminum					
17MHARDT4T	4" Aluminum - TPO Coated Flange					
17MHARDT4P	4" Aluminum - PVC Coated Flange					
17MHARDT4A	4" Aluminum - Asphalt Coated Flange					
17MHARDT5	5" Aluminum					
17MHARDT5T	5" Aluminum - TPO Coated Flange					
17MHARDT5P	5" Aluminum - PVC Coated Flange					
17MHARDT5A	5" Aluminum - Asphalt Coated Flange					
17MHARDT6	6" Aluminum					
17MHARDT6T	6" Aluminum - TPO Coated Flange					
17MHARDT6P	6" Aluminum - PVC Coated Flange					
17MHARDT6A	6" Aluminum - Asphalt Coated Flange					
17MHARDT8	8" Aluminum					
17MHARDT8T	8" Aluminum - TPO Coated Flange					
17MHARDT8P	8" Aluminum - PVC Coated Flange					
17MHARDT8A	8" Aluminum - Asphalt Coated Flange					
17MHARDT10	10" Aluminum					
17MHARDT10T	10" Aluminum - TPO Coated Flange					
17MHARDT10P	10" Aluminum - PVC Coated Flange					
17MHARDT10A	10" Aluminum - Asphalt Coated Flange					

DRAIN ACCESSORIES

Product Code	Description	Weight	Flange Dia.	Strainer Type	Strainer Dia.
17MHODI2	2" Drain Overflow Insert	2 lbs.	NA	Aluminum	NA
17MHODI4	4" Drain Overflow Insert				

MULTI-SYSTEM ACCESSORIES - ROOF DRAINS



ALUMINUM RETROFIT DRAIN with SEALANT TAPE and ALUMINUM STRAINER

Product Code	Description	Weight	Flange Dia.	Outlet Length	Strainer Type	Strainer Dia.
17MHARDA2	2" Retro Drain - Aluminum Strainer	6 lbs.	16"	12"	Aluminum	10"
17MHARDA2T	2" Retro Drain - TPO Aluminum Strainer					
17MHARDA2P	2" Retro Drain - PVC Aluminum Strainer					
17MHARDA2A	2" Retro Drain - Asphalt Aluminum Strainer					
17MHARDA3	3" Retro Drain - Aluminum Strainer					
17MHARDA3T	3" Retro Drain - TPO Aluminum Strainer					
17MHARDA3P	3" Retro Drain - PVC Aluminum Strainer					
17MHARDA3A	3" Retro Drain - Asphalt Aluminum Strainer					
17MHARDA4	4" Retro Drain - Aluminum Strainer					
17MHARDA4T	4" Retro Drain - TPO Aluminum Strainer					
17MHARDA4P	4" Retro Drain - PVC Aluminum Strainer					
17MHARDA4A	4" Retro Drain - Asphalt Aluminum Strainer					
17MHARDA5	5" Aluminum - Aluminum Strainer					
17MHARDA5T	5" Aluminum - TPO Aluminum Strainer					
17MHARDA5P	5" Aluminum - PVC Aluminum Strainer					
17MHARDA5A	5" Aluminum - Asphalt Aluminum Strainer					
17MHARDA6	6" Aluminum - Aluminum Strainer					
17MHARDA6T	6" Aluminum - TPO Aluminum Strainer					
17MHARDA6P	6" Aluminum - PVC Aluminum Strainer					
17MHARDA6A	6" Aluminum - Asphalt Aluminum Strainer					
17MHARDA8	8" Aluminum - Aluminum Strainer					
17MHARDA8T	8" Aluminum - TPO Aluminum Strainer					
17MHARDA8P	8" Aluminum - PVC Aluminum Strainer					
17MHARDA8A	8" Aluminum - Asphalt Aluminum Strainer					

MULTI-SYSTEM ACCESSORIES - ROOF INSULATION



POLY-ISO FLAT & TAPERED (4'X4' OR 4'X8')

MuleHide Poly ISO 1™ polyisocyanurate insulation (flat or tapered) is a closed-cell polyisocyanurate foam core laminated to (non-asphaltic) glass fiber reinforced felt facers. Featuring glass facer with a light and dark side, allowing the installer to choose which side to install up to control flash-off times in fully adhered applications. The product insulations are compatible with all MuleHide membranes and accessories and are available in 20 and 25 psi densities. MuleHide Poly ISO insulation boards may be used for ballasted, mechanically attached and fully adhered single-ply roofing systems. Poly ISO insulation board may be installed over approved decks and substrates on new construction, tearoffs and recover (retrofit) projects. Rated for use in UL Class A and FM Class 1 assemblies.



POLY ISO 1-HD

MuleHide Poly ISO 1-HD is 1/2" thick, 100 psi high-density polyisocyanurate insulation board specifically designed for use as a cover board. Consists of a closed-cell polyisocyanurate foam core laminated to premium performance coated glass fiber felt facers. MuleHide Poly ISO 1-HD is designed for use as a cover board over roof insulation boards or existing membranes. Compatible with single-ply roofing systems (ballasted, mechanically attached and fully adhered) and modified bitumen roofing systems, on new construction, tearoff and recover (retrofit) projects. Suitable for use with approved fasteners and plates, and low-rise foam adhesive. Poly ISO 1-HD can achieve a FM hail resistance rating of SH-1 with certain membranes.

Product	Product Code	Thickness	Size	PCS/Unit	Units/Truck
Poly ISO 1-HD	58MHHD0544	1/2"	4' x 4'	96	48
	58MHHD0548	1/2"	4' x 8'	45	24

MULTI-SYSTEM ACCESSORIES - COVER BOARDS



DENSDECK®

DensDeck® Prime Roof Board has been enhanced to provide a broader compatibility and higher performance with roofing adhesives. Face mat enhancements allow adhesives to be applied more uniformly and consistently. In adhered, single-ply membrane testing, enhanced DensDeck® Prime demonstrated an average of 24% better bond than the original products, when using solvent-based adhesives.

Product	Product Code	Thickness	Size	PCS/Unit	Units/Truck
DensDeck	62MHDD1448	1/4"	4' X 8'	42	28-29
	62MHDD1248	1/2"	4' X 8'	30	24-25
	62MHDD5848	5/8"	4' X 8'	30	18-19
DensDeck Prime®	62MHDP1444	1/4"	4' X 4'	60	40-42
	62MHDP1448	1/4"	4' X 8'	42	28-29
	62MHDP1244	1/2"	4' X 4'	50	29-30
	62MHDP1248	1/2"	4' X 8'	30	24-25
	62MHDP5844	5/8"	4' X 4'	40	29-30
	62MHDP5848	5/8"	4' X 8'	30	18-19



SECUROCK®

Gypsum-fiber roof board is a high-performance roof board for use in low-slope roofing systems. Its unique, fiber-reinforced, homogenous composition gives the panel strength and water resistance through to the core. Securock® roof boards provide exceptional bond and low absorption in adhered systems and with its homogenous composition achieves high wind-uplift ratings with no risk of facer delamination. Made from 97% recycled material, Securock® roof boards combine superior performance with sustainable design for all types of roofing systems including single-ply, fluid-applied, built-up, spray foam, metal and modified bitumen roofing.

Product	Product Code	Thickness	Size	PCS/Unit	Units/Truck
Securock	62MHSR1444	1/4"	4' X 4'	100	18
	62MHSR1448	1/4"	4' X 8'	50	18
	62MHSC3844	3/8"	4' X 4'	80	18
	62MHSR3848	3/8"	4' X 8'	40	18
	62MHSR1244	1/2"	4' X 4'	60	19
	62MHSR1248	1/2"	4' X 8'	30	19
	62MHSR5844	5/8"	4' X 4'	48	19
Securock UltraLight Coated Glass Mat	62MHSR5848	5/8"	4' X 8'	24	19
	62MHSC1444	1/4"***	4' X 4'	100	18
	62MHSC1448	1/4"	4' X 8'	50	18
	62MHSC1244	1/2"***	4' X 4'	60	19
	62MHSC1248	1/2"	4' X 8'	30	19
Securock UltraLight Glass Mat	62MHSC5844	5/8"***	4' X 4'	48	19
	62MHSC5848	5/8"	4' X 8'	24	19
	62MHSG1448	1/4"	4' X 8'	42	27
Securock UltraLight Glass Mat	62MHSG1248	1/2"	4' X 8'	30	24
	62MHSG5848	5/8"	4' X 8'	30	16
Securock Concrete Patch	62MHSRCP50		50 lb. bag	1	

***Special order minimum 3 week lead time*

MULTI-SYSTEM ACCESSORIES - AIR & VAPOR BARRIER















F5 AIR & VAPOR BARRIER


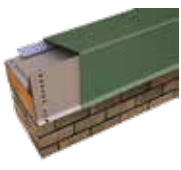
A 40-Mil composite consisting of 35-Mils of self-adhering rubberized asphalt laminated to a 5-Mil woven polypropylene film. A siliconized one-piece release liner prevents the material from bonding to itself in the roll and is easily removed for installation. F5 Air & Vapor Barrier is available in a 325 sq. ft. roll with dimensions of 39"x 100". The factory-controlled thickness of the membrane ensures uniform barrier properties, and the woven polypropylene film increases strength and has a non-skid surface suitable for the bonding of subsequent layers.

Product Code	Description	Coverage	Carton	Weight
09MHF5AVB1	39" x 100' F5 Air & Vapor Barrier	325 sq. ft.	1 per ctn	63 lbs.

MULTI-SYSTEM ACCESSORIES - EDGE METAL

FASCIA PRODUCT LINE	VERSIONS
 ECLIPSE EDGE	<ul style="list-style-type: none"> • Single-Ply
 ECLIPSE EDGE MB	<ul style="list-style-type: none"> • Single-Ply • Built-Up or Modified
 ECLIPSE EDGE EXTENDED MB	<ul style="list-style-type: none"> • Single-Ply • Built-Up or Modified
 2-PIECE SNAP-ON COMPRESSION	<ul style="list-style-type: none"> • Single-Ply, Snap-On • Single-Ply, Crimp-On
 2-PIECE SNAP-ON COMPRESSION MB	<ul style="list-style-type: none"> • Built-Up or Modified
 1-3/4" FASCIA COVER	<ul style="list-style-type: none"> • Formed
 4" FASCIA COVER	<ul style="list-style-type: none"> • 4"
 COUNTERFLASHING	<ul style="list-style-type: none"> • 1-Piece Reglet • 2-Piece Reglet • 1-Piece Surface Mounted

DRIP EDGE PRODUCT LINE	VERSIONS
 DRIP EDGE	<ul style="list-style-type: none"> • Kynar • Flash-Thru
 DRIP EDGE	<ul style="list-style-type: none"> • TPO or PVC Coated
 SKIRTED DRIP EDGE	<ul style="list-style-type: none"> • TPO or PVC Coated (Skirted)
 GRAVEL STOP	<ul style="list-style-type: none"> • Kynar

COPING PRODUCT LINE	VERSIONS
 COPING	<ul style="list-style-type: none"> • Tapered • Flat • Existing Slope
 SNAP COPING	<ul style="list-style-type: none"> • Tapered • Flat • Existing Slope

Scuppers, gutters and other accessories are available. To view the full line of Edge Metal & Accessories including color options, metal options and sizes, visit mulehide.com or ask for an Edge Metal & Accessories brochure.



MULTI-SYSTEM ACCESSORIES - CAULKS & SEALANTS



100% SILICONE SEALANT

Is a high-solids non-shrinking moisture-cure silicone sealant that has minimal odor, contains no solvents and has less than 10 grams per liter VOC. Provides excellent adhesion to concrete, masonry, polyurethane foam, EPDM, TPO, aged PVC, aged acrylic coatings, granular cap sheet, wood, metals, Kynar® Finishes and most other common building materials. MuleHide Si TPO Primer is required for TPO roof membranes.

Removable Tip



Product Code	Color	Description	Coverage	Shelf Life
16MHSISECL	Clear	1 tube (30/ctn)	25 Ln Ft with 1/4" bead	1 Year
16MHSISEWH	White	1 tube (30/ctn)		



RGA 1

Flashing Cement is the highest quality, most versatile asphalt-based roof cement ever developed. This distinctive product is intended for use by quality-driven roofing professionals who demand that their materials meet the highest performance standards. Its outstanding adhesion to wet, dry and even underwater surfaces allows application in any conditions. With wider usable temperature ranges, RGA1 applies easily at seasonal temperature extremes.

Removable Tip



Product Code	Color	Description	Coverage	Shelf Life
16MHRGA1BT	Black	1 tube (30/ctn)	20 Ln Ft with 1/4" bead	2 Years



SEBS 1

Is a high-performance, multipurpose thermoplastic elastomer-based roofing sealant. Provides excellent adhesion to most surfaces including the list above. Use to seal seams, flashings and penetrations on all types of roofs. Ideal for roofing applications where appearance is important.

Removable Tip



Product Code	Color	Coverage	Carton	Shelf Life
30MHSEB1WH	White	25 Ln Ft with 1/4" bead	(30) 10 oz tubes/ctn	1 Year
30MHSEB1BK	Black			
30MHSEB1PC	Pure Clear			



JTS 1 JOINT & TERMINATION SEALANT

JTS 1 is a moisture-cure urethane sealant made with 100% solids. JTS 1 seals large joints, roof termination bars and adheres to concrete, masonry, EPDM, PVC, TPO (primed), wood, vinyl and most other common building materials. *Removable Tip*



Product Code	Color	Coverage	Carton	Shelf Life
30MHJTS1BK	Black	25 Ln Ft with 1/4" bead	(30) 10 oz tubes/ctn	1 year
30MHJTS1BZ	Bronze			
30MHJTS1CL	Clear			
30MHJTS1GY	Gray			
30MHJTS1LS	Limestone			
30MHJTS1MB	Medium Bronze			
30MHJTS1TC	Terra Cotta			
30MHJTS1WH	White			
30MHJTS1WT	Wicker Tan			

Color Options:

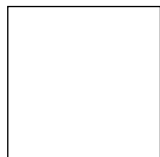
*Colors shown are matched as accurately as possible, but may vary slightly from finished product.



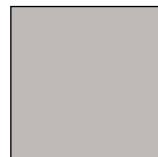
Black



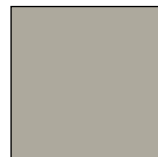
Bronze



Clear



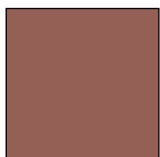
Gray



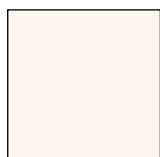
Limestone



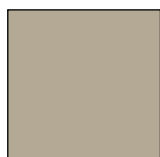
Medium Bronze



Terra Cotta



White



Wicker Tan

MULTI-SYSTEM ACCESSORIES - CAULKS & SEALANTS



LIQUI-FLASH

A one-component, non-shrink, advanced technology polyurethane sealant designed for filling and sealing pitch pockets and pans, metal roof seams and fasteners, inlaid gutters, polyurethane foam, aged smooth asphalt and modified bitumen, aged PVC and EPDM roofs. Compatible with MuleHide acrylic and silicone roof coatings.



REPAIR HERO

A solvent-based, fiber-reinforced terpolymer sealant intended for the repair of asphalt, modified bitumen, metal, Kynar®, concrete, TPO, PVC, Elvaloy®/PVC, Hypalon® (CSPE), PIB and EPDM roofs.



Product Code	Description	Carton	Weight	Shelf Life
16MHLFWH1	1-Gallon Pail - White	1 pail	33.8 lbs.	2 yrs.
16MHLFWH35	3.5-Gallon Pail - White	1 pail	25 lbs.	
16MHLFBK1	1-Gallon Pail - Black	1 pail	33.8 lbs.	
16MHLFBK35	3.5-Gallon Pail - Black	1 pail	25 lbs.	
16MHLFGY1	1-Gallon Pail - Gray	1 pail	33.8 lbs.	
16MHLFGY35	3.5-Gallon Pail - Gray	1 pail	25 lbs.	



Product Code	Description	Carton	Weight
16MHRHWH1	1-Gallon Pail - White	4/ctn	33.8 lbs.
16MHRHWH3	3-Gallon Pail - White	1 pail	25 lbs.
16MHRHBK1	1-Gallon Pail - Black	4/ctn	33.8 lbs.
16MHRHBK3	3-Gallon Pail - Black	1 pail	25 lbs.
16MHRHGY1	1-Gallon Pail - Gray	4/ctn	33.8 lbs.
16MHRHGY3	3-Gallon Pail - Gray	1 pail	25 lbs.



MULTI-SYSTEM ACCESSORIES - SHAPESHIFT LINE



MP LIQUID SEALANT

Single-component, non-shrink, advanced-technology sealant designed for sealing metal roof seams and fasteners, gutter seams and liquid flashings. Semi-self leveling sealant consisting of 100% solids which results in zero shrinkage.



Product Code	Description	Carton	Shelf Life
08MHMPLS2W	2 Liter Pouch, White	(4) 2 Liter Pouch	1 Year
08MHMPLS2B	2 Liter Pouch, Black		



SHAPESHIFT PITCH PAN

Straight and outside corner sections snap together to create an endless number of pitch pan sizes to seal around roof projections. The pieces snap together with interlocking joints.



Product Code	Description	Carton	Weight
08MHSSPC48	Corners	48 per	6 lbs.
08MHSSPC16	Corners	16 per	2 lbs.
08MHSSPS16	Straights	16 per	2 lbs.



LARGE PITCH PAN KIT

Create (4) 7" Pitch Pans per kit. Kit includes: 16 corners, 16 straights, 3 tubes JTS 1 and 1 - 2 liter pouch of MP Liquid Sealant.



SMALL PITCH PAN KIT

Create (4) 4" Pitch Pans per kit. Kit includes: 16 corners, 2 tubes JTS 1 and 3 - 2 liter pouches of MP Liquid Sealant.

Customize kits by adding additional components.



Product Code	Description	Carton	Weight
08MHSPKLWH	Large Pitch Pan Kit	1	6 lbs.
08MHSPKSWH	Small Pitch Pan Kit	1	2 lbs.



SI TPO PRIMER

Promotes adhesion with our JTS 1 Sealant to new and aged TPO membranes.



Product Code	Description	Color	Shelf Life
16MHSITPRP	1 Pint (4/ctn)	Clear	2 Years
16MHSITPR1	1 Gallon (4/ctn)	Blue	
16MHSITPR5	5 Gallon (1 pail)	Blue	

When using ShapeShift on a vertical penetration, fill with JTS 1





“The name trusted in roofing since 1906”

Customer Line: 800-786-1492 • www.mulehide.com



The information herein should not be considered all-inclusive and should always be accompanied by a review of the Mulehide specifications and guidelines and good application practices.

This information herein is based upon data and knowledge considered to be true and accurate at the time of printing and is provided for the reader's consideration, investigation and verification. No statement made by anyone may supersede this information, except when done in writing by Mule-Hide Products Co., Inc. (“MuleHide”). MuleHide does not warrant any results to be obtained. Statements concerning possible use of MuleHide products are made without knowledge of your particular roof and such an application may not be fit for your particular purpose. MuleHide **DISCLAIMS ALL WARRANTIES, INCLUDING THE IMPLIED WARRANTY OF MERCHANTABILITY AND FITNESS FOR A PARTICULAR PURPOSE**, except written warranties attached to MuleHide and written warranties signed by an officer of MuleHide.

Visit the MuleHide website at www.mulehide.com prior to any installation for updated technical specifications and details. MuleHide is a U.S. registered trademark. DensDeck is wholly owned registered trademark of Georgia-Pacific Gypsum LLC/Georgia-Pacific Wood Products LLC. SECUROCK is wholly owned registered trademark of USG Corporation. Kynar is wholly owned registered trademark of Arkema Inc. Elvaloy is wholly owned registered trademark of E.I. du Pont de Nemours and Company or its affiliates. All rights reserved.