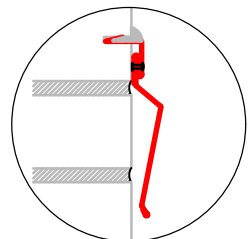
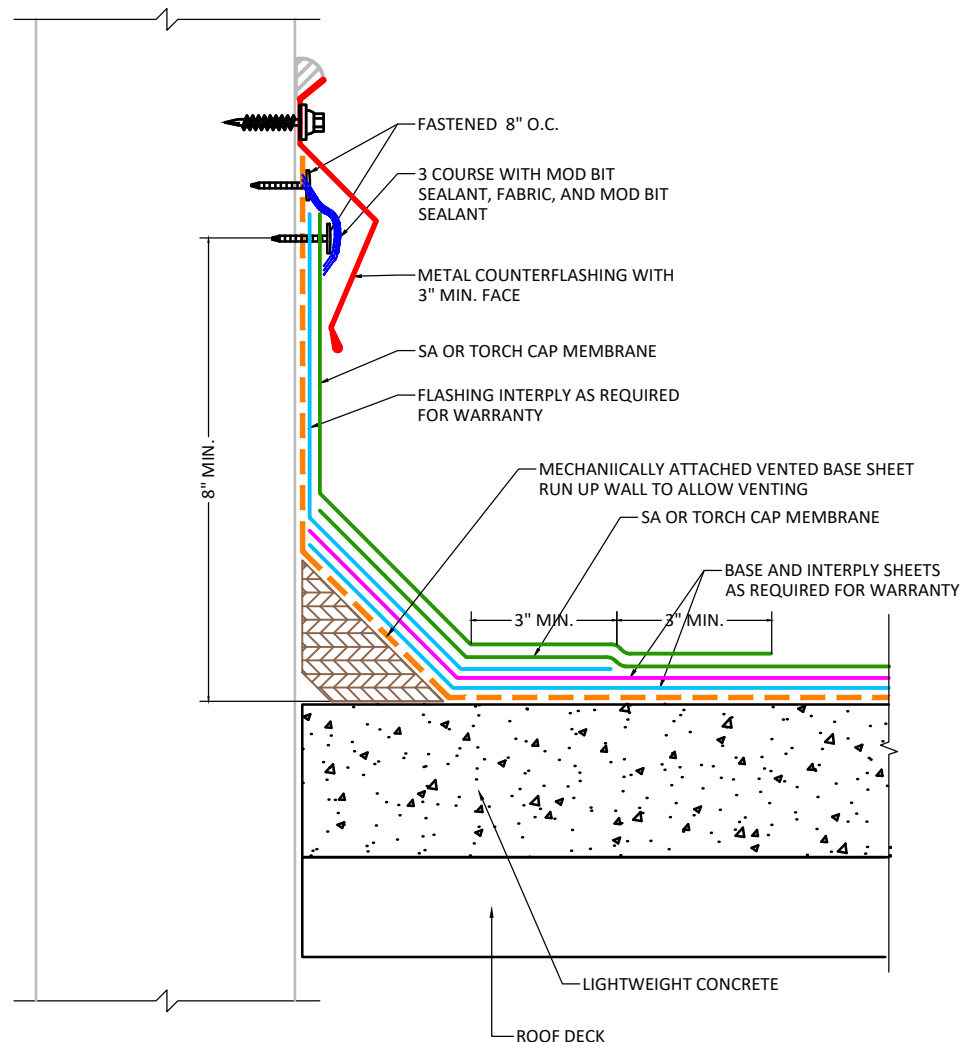


REGLET



2-PIECE REGLET



NOTES:

1. Refer to specifications for flashing membrane requirements.
2. Laps in flashing must be offset from laps in field sheet.
3. Cap sheet must be heated and granules embedded in surface at all laps over granulated surfaces when installing cap sheet.
4. Maximum flashing height for app modified bitumen flashings is 36". If wall is taller than 36", See detail MHMB-UN-CW06T.

APPLICABLE SYSTEMS (AND MEMBRANES):
 SELF ADHERED
 TORCH APPLIED

MULEHIDE

BASE FLASHING FOR VENTED PERIMETER

MAXIMUM WARRANTY:
 20 YEARS MAX

DETAIL NO.:
MB-BA-A1003

REVISION DATE: 6/8/2026