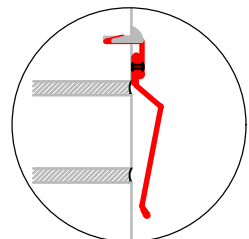
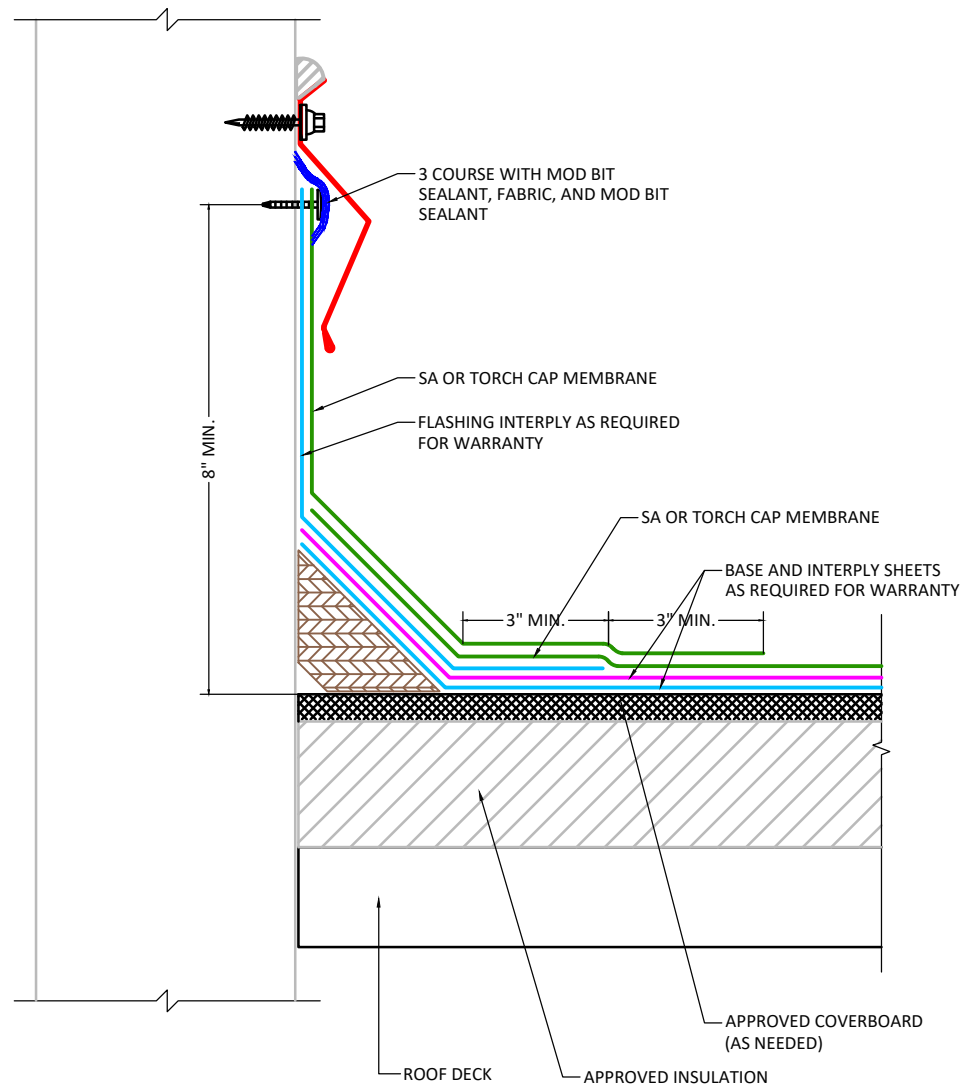


REGLET



2-PIECE REGLET



NOTES:

1. Refer to specifications for flashing membrane requirements.
2. Laps in flashing must be offset from laps in field sheet.
3. Cap sheet must be heated and granules embedded in surface at all laps over granulated surfaces when installing cap sheet.
4. Maximum flashing height for app modified bitumen flashings is 36". If wall is taller than 36", See detail MHMB-UN-CW06T.
5. All vertical surfaces must be primed.
6. If flashing substrate is combustible, refer to detail MHMB-UN-CW11T or MHMB-UN-CW02T.

APPLICABLE SYSTEMS (AND MEMBRANES):  
 SELF ADHERED  
 TORCH APPLIED

**MULEHIDE**

BASE FLASHING WITH METAL COUNTERFLASHING

MAXIMUM WARRANTY:  
 20 YEARS MAX

**DETAIL NO.:**  
**MB-BA-A1002**

REVISION DATE: 6/8/2026