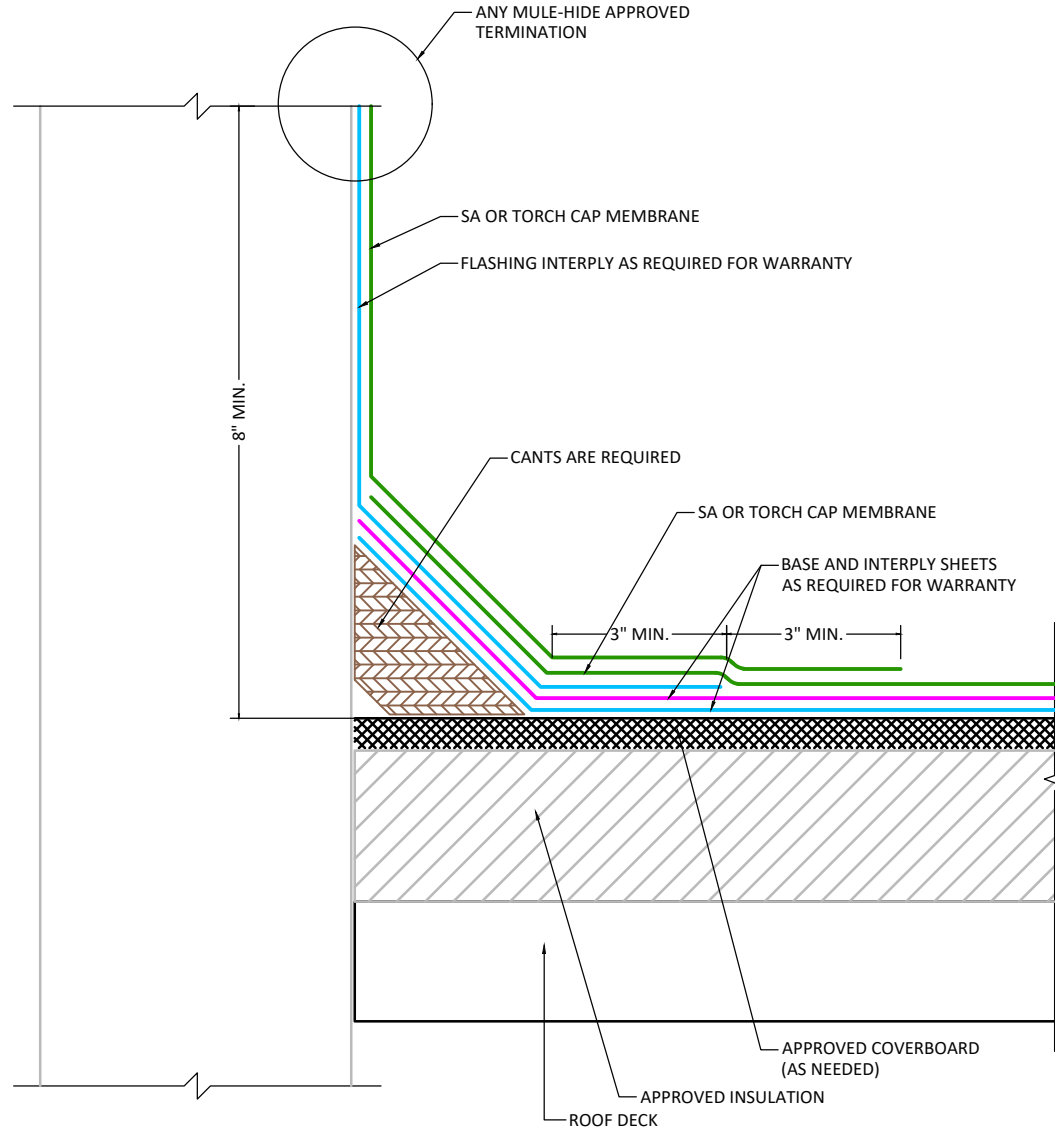


NOTES:

1. Refer to specifications for flashing membrane requirements.
2. Laps in flashing must be offset from laps in field sheet.
3. Cap sheet must be heated and granules embedded in surface at all laps over granulated surfaces when installing cap sheet.
4. Maximum flashing height for app modified bitumen flashings is 36".
5. All vertical surfaces must be primed.



APPLICABLE SYSTEMS (AND MEMBRANES):
 SELF ADHERED
 TORCH APPLIED

MULEHIDE

BASE FLASHING NONCOMBUSTIBLE SUBSTRATE

DETAIL NO.:

MB-BA-A1000

MAXIMUM WARRANTY:
 20 YEARS MAX

REVISION DATE: 6/8/2026