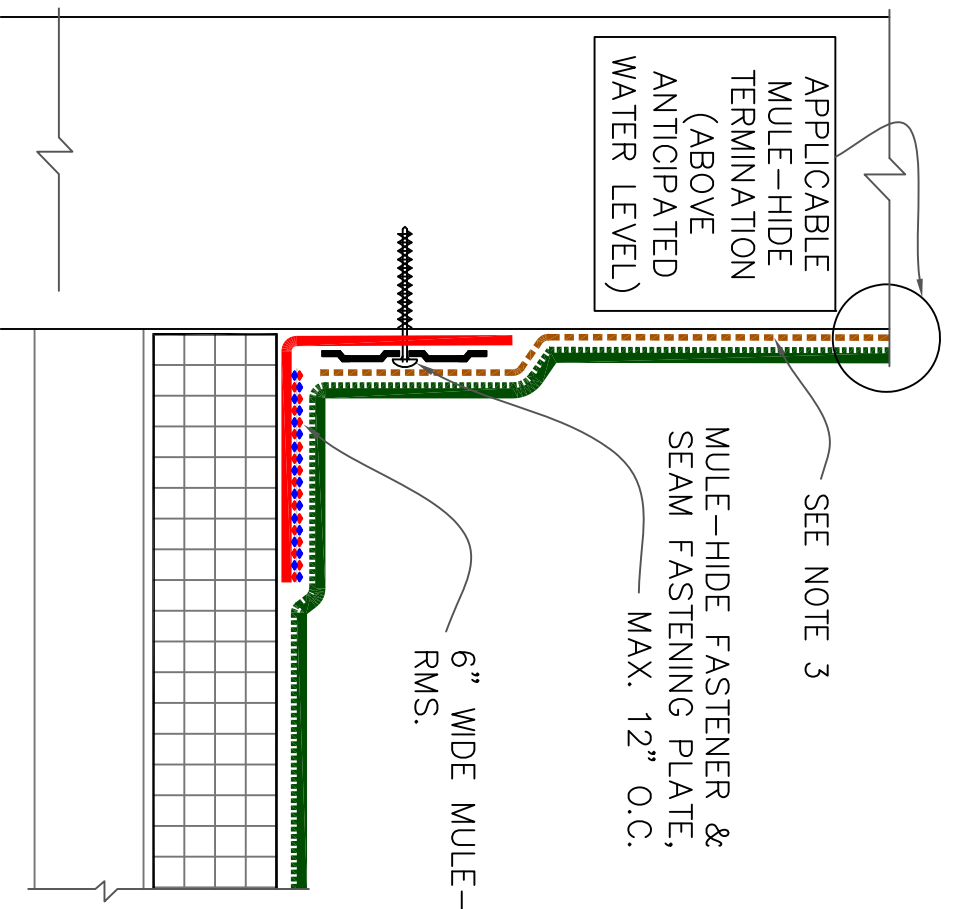


APPLICABLE
MULE-HIDE
TERMINATION
(ABOVE
ANTICIPATED
WATER LEVEL)

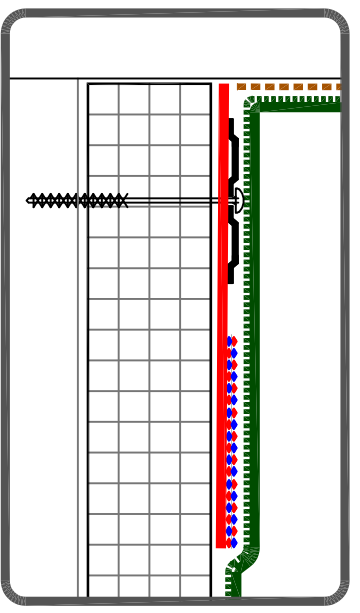
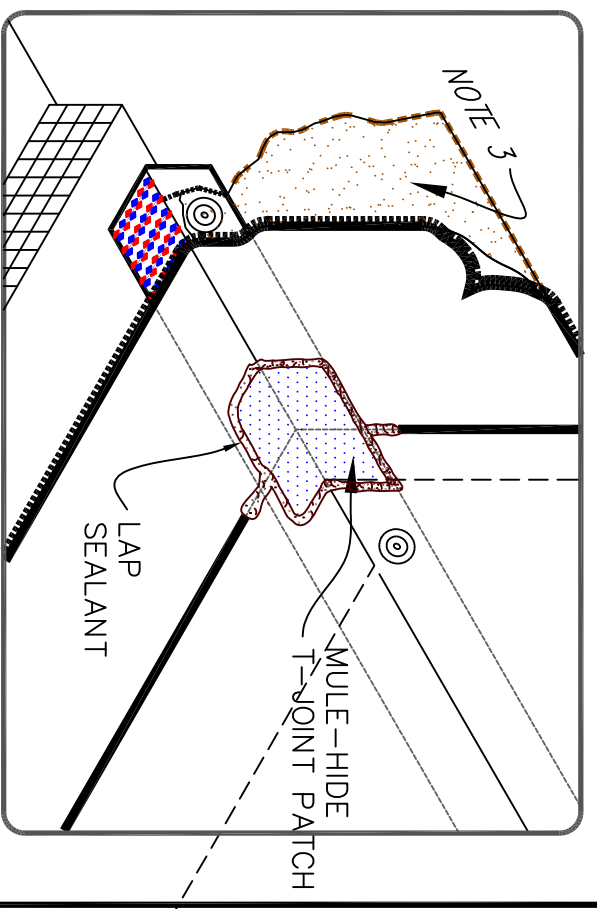
SEE NOTE 3

MULE-HIDE FASTENER &
SEAM FASTENING PLATE,
MAX. 12" O.C.

6" WIDE MULE-HIDE
RMS.



- NOTES:
1. FOR CORNERS AND RUSS APPLICATION, REFER TO DETAILS [MHE-183](#) OR [MHE-184](#).
 2. 6" (152mm) EPDM UNCURED FLASHING TAPE IN CONJUNCTION WITH EPDM PRIMER, MAY ALSO BE CENTERED OVER FIELD SPLICE AT ANGLE CHANGE.
 3. VERTICAL SURFACES MUST BE PRIMED WITH EITHER AEROWEB OR MULE-HIDE BONDING ADHESIVE. EACH PRODUCT MUST BE ALLOWED TO FLASH-OFF PRIOR TO THE APPLICATION OF THE SA EPDM MEMBRANE.



OPTIONAL: SEAM FASTENING
PLATE/FASTENER MAY ALSO BE
INSTALLED INTO THE
STRUCTURAL DECK.

MULE-HIDE PRODUCTS CO., INC.

PARAPET/CURB WITH
MULE-HIDE RMS (VERTICAL)
SYSTEMS:
SELF-ADHERING EPDM
SYSTEMS ONLY

DETAIL NO.:
MHE-SA-120A

REVISION DATE: 09/2019