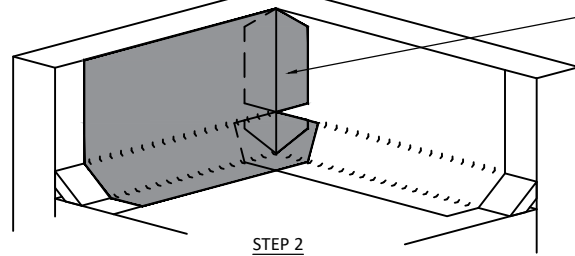
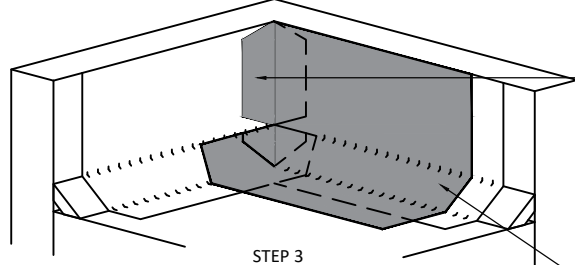


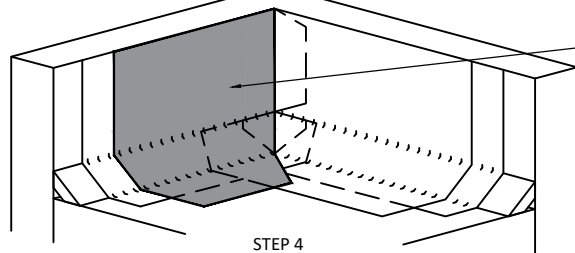
STEP 1



STEP 2



STEP 3



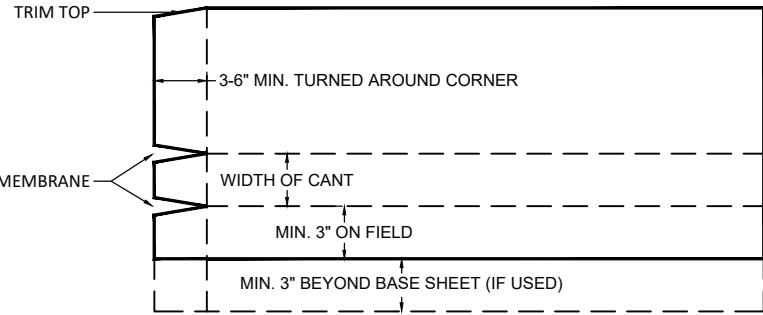
STEP 4

INTERPLY REQUIRED FOR 15 & 20 YEAR SYSTEMS

HEAT SURFACE OF MEMBRANE AND EMBED GRANULES INTO THE SHEET TO CREATE SMOOTH SURFACE FOR OVERLAPPING SHEET

APP MODIFIED BITUMEN GRANULE SURFACED CAP SHEET

INSTALL CORNER PATCHES AT ALL ANGLE CHANGES



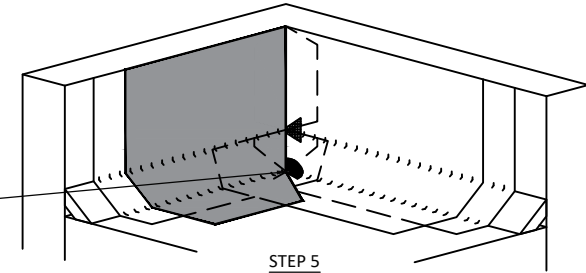
SHEET LAYOUT



2" MIN. BOWTIE PATCH



5" MIN. NOTCHED PATCH



STEP 5

NOTES:

1. Refer to specifications for flashing membrane requirements.
2. Cut membrane and wrap corners as shown.

APPLICABLE SYSTEMS (AND MEMBRANES):
 SELF ADHERED
 TORCH APPLIED

INSIDE CORNER ISOMETRIC

MAXIMUM WARRANTY:
 20 YEARS MAX

DETAIL NO.:

MB-CR-A701

REVISION DATE: 6/8/2026

MULEHIDE