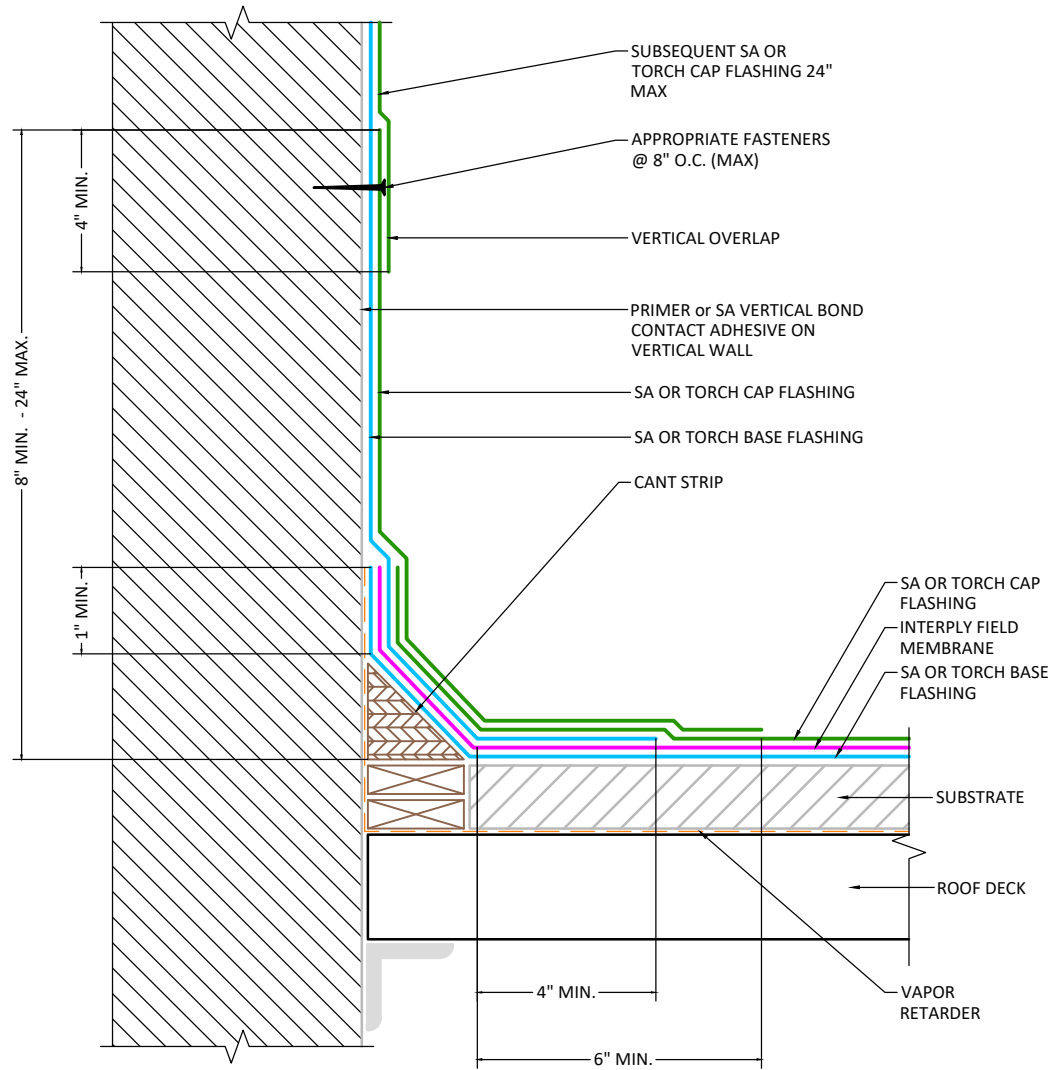


NOTES:

1. Metal Edge Flashing, Wood Blockings and Attachments shall comply with ANSI/SPRI ES-1
2. Refer to SMACNA recommendations and details regarding metal thickness and cleat requirements. Continuous cleats are recommended at all edges and coping flashings, cleats to be at least one gauge heavier than the edge/coping metal.
3. Wood blocking may be slotted for venting of wet-fill decks or other applicable constructions.
4. At vertical overlap, adhere subsequent cap flashing using approved method appropriate to product type (e.g., self-adhered, heat welded, cold-applied, etc).
5. Primer selection for vertical surfaces may vary based on substrate type, environmental conditions, and membrane application method (e.g., torch-applied, self-adhered, etc.). Use only approved primer SA Vert Contact Adhesive
6. Membrane end laps to be a minimum 6" and fully adhered at all membrane to membrane seams.
7. Membrane laps at flanged metal to be 3" minimum and fully bonded to primed metal surface.
8. Use only when roof deck is support by the wall.



APPLICABLE SYSTEMS (AND MEMBRANES)
 SELF ADHERED
 TORCH APPLIED

MULEHIDE

HIGH WALL CONDITION 3 PLY APPLICATION WITH VAPOR RETARDER

MAXIMUM WARRANTY:
 20 YEARS MAX

DETAIL NO.:
MB-WF-A201

REVISION DATE: 6/8/2026