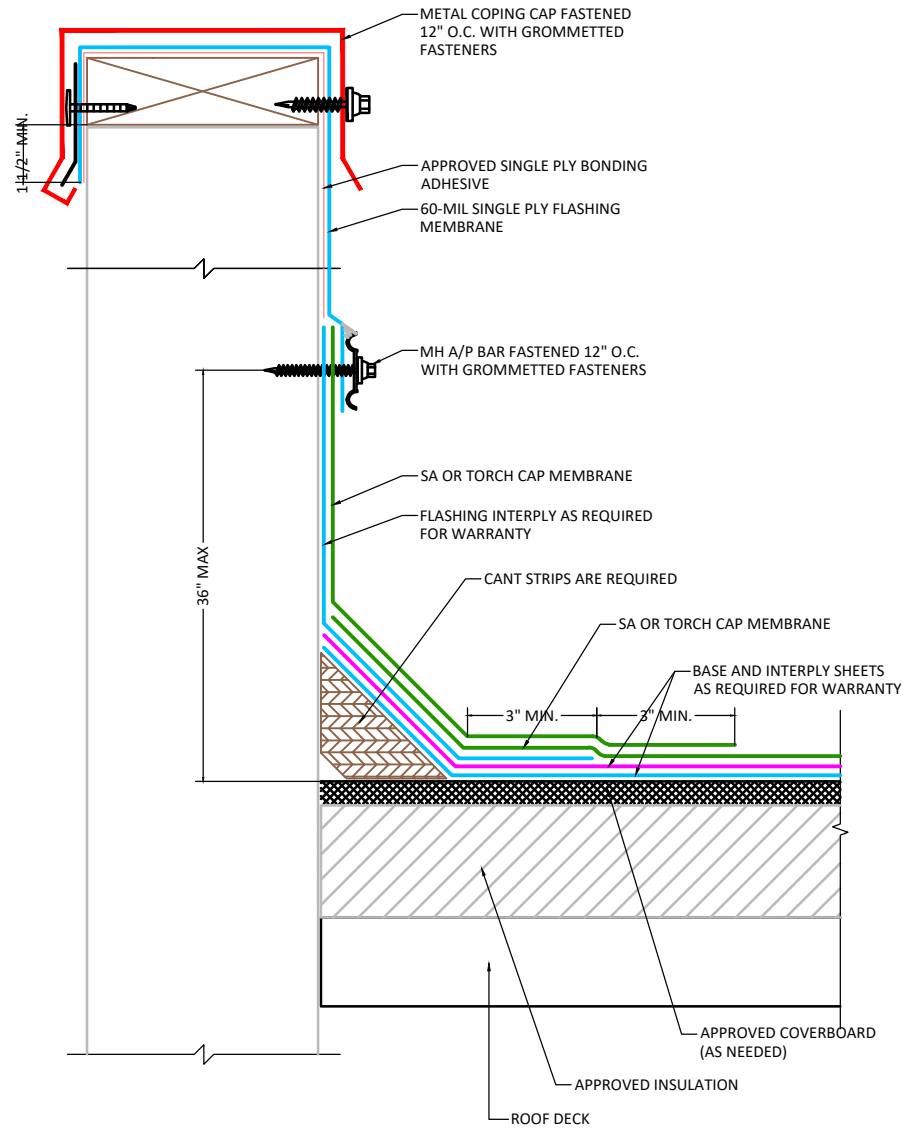


NOTES:

1. Refer to specifications for flashing membrane requirements.
2. Laps in flashing must be offset from laps in field sheet.
3. Cap sheet must be heated and granules embedded in surface at all laps over granulated surfaces when installing cap sheet.
4. Maximum flashing height for app modified bitumen flashings is 36".
5. Single ply membrane must overlap top of modified bitumen flashing prior to installing A/P bar.
6. All vertical surfaces must be primed.
7. If flashing substrate is combustible, refer to detail MB-BA-A1000



APPLICABLE SYSTEMS (AND MEMBRANES):
 SELF ADHERED
 TORCH APPLIED

MULEHIDE

HIGH WALL PARAPET FLASHING

DETAIL NO.:
MB-WF-A206

MAXIMUM WARRANTY:
 20 YEARS MAX

REVISION DATE: 6/8/2026