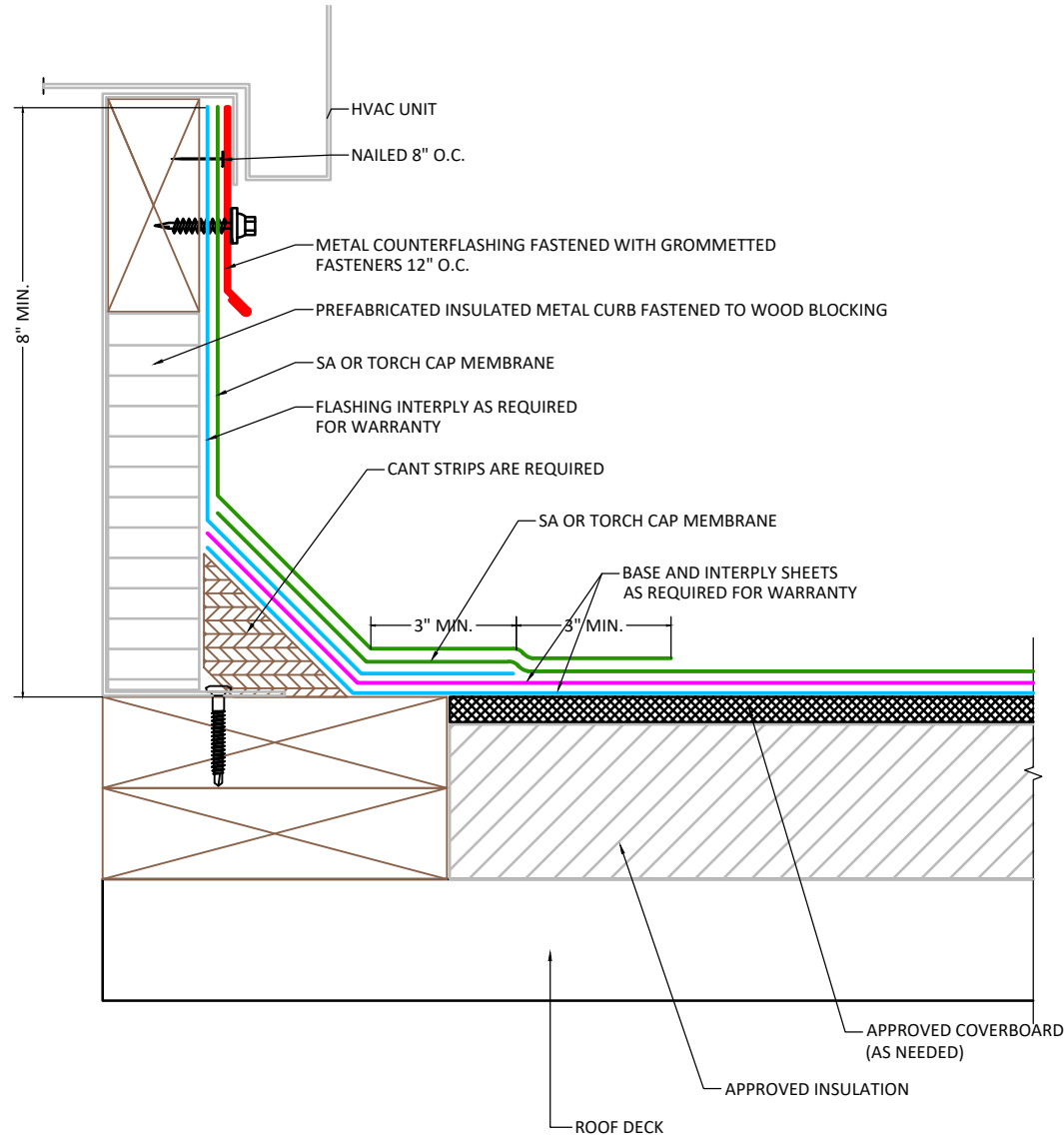


NOTES:

1. Refer to specifications for flashing membrane requirements.
2. Wood nailers must be installed with proper fasteners to meet applicable building codes.
3. Laps in flashing must be offset from laps in field sheet.
4. Cap sheet must be heated and granules embedded in surface at all laps over granulated surfaces when installing cap sheet.
5. Install HVAC units after the roof membrane and flashings have been installed, if possible.
6. Vertical surfaces must be primed.
7. Any combustible materials on prefabricated curb must be protected with a G2 base nailed in place or a SA base adhered to a primed surface.



APPLICABLE SYSTEMS (AND MEMBRANES):
 SELF ADHERED
 TORCH APPLIED

MULEHIDE

PREFABRICATED METAL CURB

DETAIL NO.:
MB-CB-A209

MAXIMUM WARRANTY:
 20 YEARS MAX

REVISION DATE: 6/8/2026