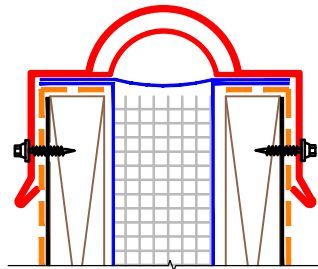
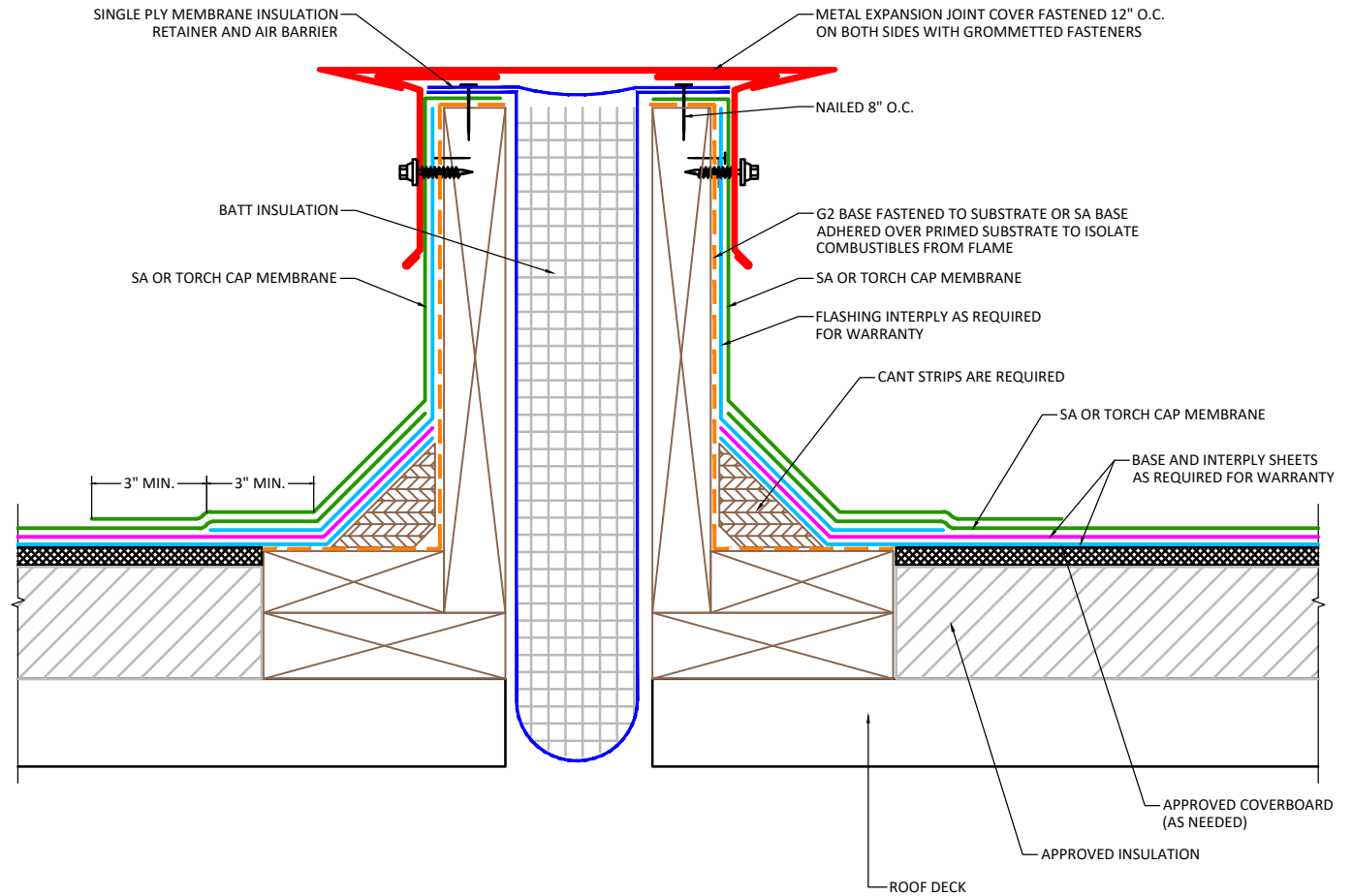


NOTES:

1. Refer to specifications for flashing membrane requirements.
2. Wood nailers must be installed with proper fasteners to meet applicable building codes.
3. Laps in flashing must be offset from laps in field sheet.
4. Cap sheet must be heated and granules embedded in surface at all laps over granulated surfaces when installing cap sheet.



PREFABRICATED  
EXPANSION JOINT COVER



APPLICABLE SYSTEMS (AND MEMBRANES):  
SELF ADHERED  
TORCH APPLIED

EXPANSION JOINT CURB

MAXIMUM WARRANTY:  
20 YEARS MAX

**DETAIL NO.:**  
**MB-EJ-A302**

REVISION DATE: 6/8/2026

**MULEHIDE**