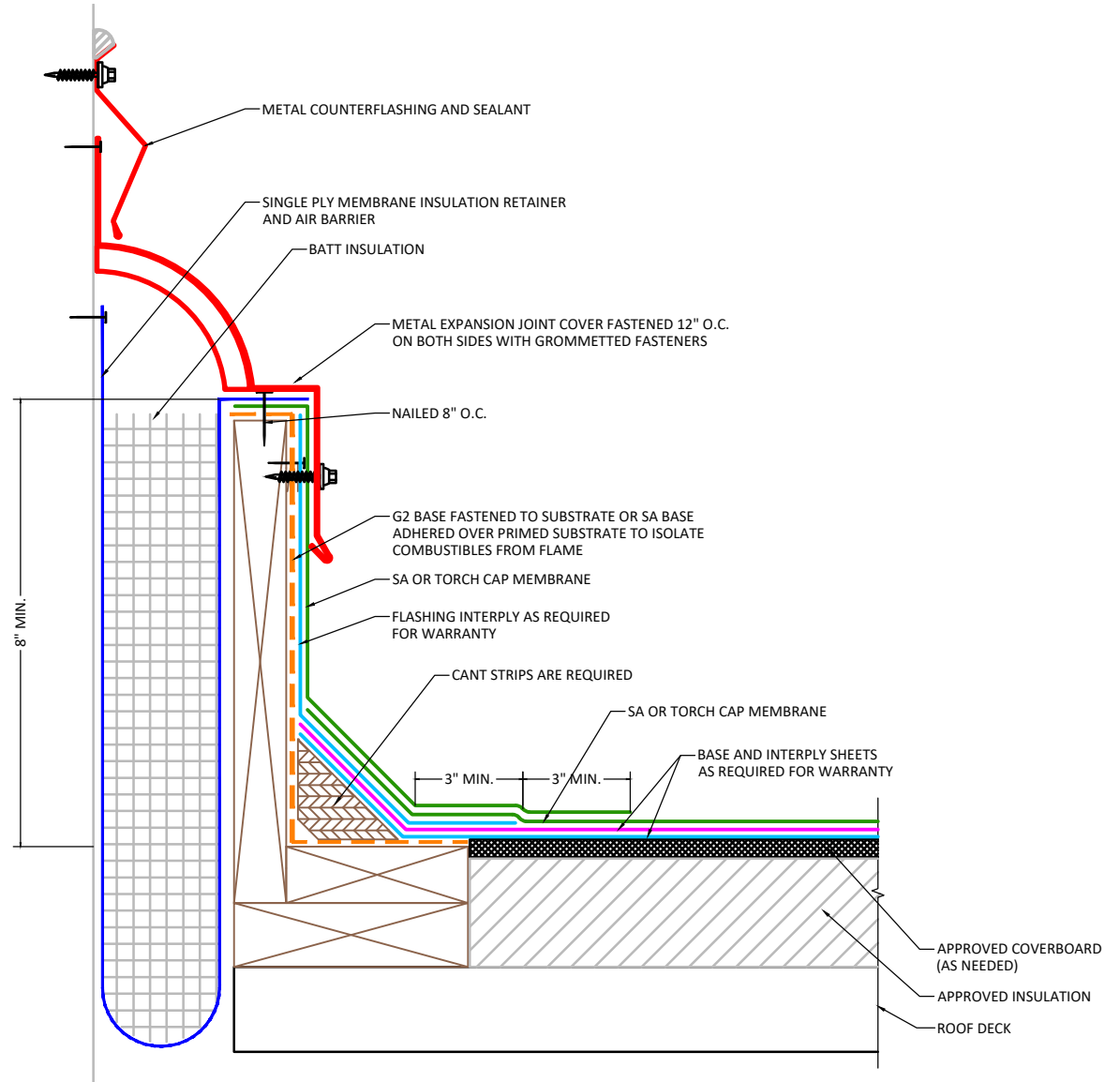


NOTES:

1. Refer to specifications for flashing membrane requirements.
2. Wood nailers must be installed with proper fasteners to meet applicable building codes.
3. Laps in flashing must be offset from laps in field sheet.
4. Cap sheet must be heated and granules embedded in surface at all laps over granulated surfaces when installing cap sheet.



APPLICABLE SYSTEMS (AND MEMBRANES):
 SELF ADHERED
 TORCH APPLIED

MULEHIDE

EXPANSION JOINT WALL

MAXIMUM WARRANTY:
 20 YEARS MAX

DETAIL NO.:
MB-EJ-A303

REVISION DATE: 6/8/2026