

MULE-HIDE PRODUCTS CO., INC.

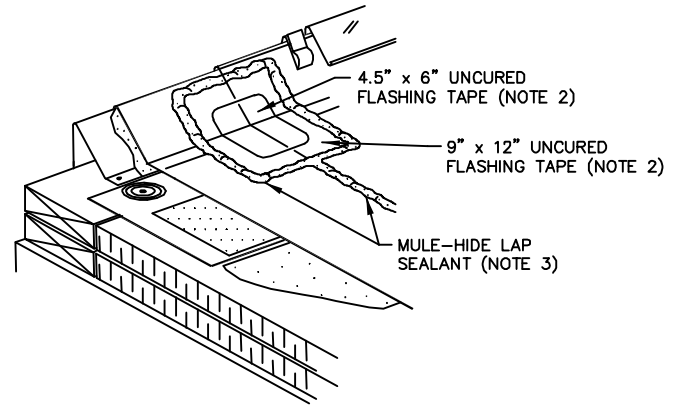
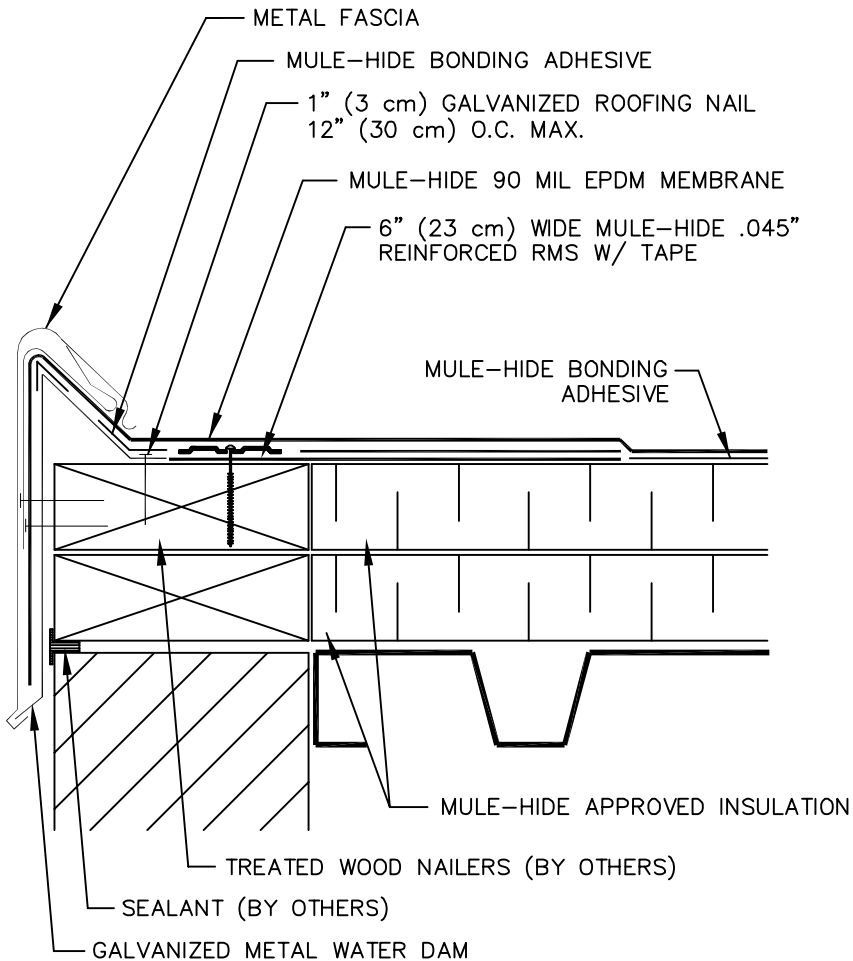
EPDM STANDARD DETAILS

TABLE OF CONTENTS

90-Mil EPDM Details

Metal-Era Perma-Tite Edge	MHE-500
Metal-Era Anchor-Tite Edge	MHE-501
Drip Edge	MHE-502
All Purpose Bar at Roof Edge.....	MHE-503
Membrane Splice (“T” Joint)	MHE-508
Field Fabricated Pipe Seal	MHE-509
Flexible Penetration	MHE-510
Field Fabricated Hot Stack	MHE-511
Premolded Pipe Boot.....	MHE-512
Curb Flashing and outside corner	MHE-513
Inside Corner w/ Separate Flashing	MHE-514
Inside Corner w/ Continuous Flashing.	MHE-515
Outside Corner w/ Uncured Tape.....	MHE-516
Pourable Sealer Pocket w/ Hood.....	MHE-517
Pourable Sealer Pocket (double).....	MHE-518
Penetration Curb Detail	MHE-519
End Lap & “T” Joint Patches.....	MHE-520
Wall Flashing w/ End Lap	MHE-521
Vertical Flashing Terminations	MHE-522

***PLEASE CONSULT THE MULE-HIDE WEBSITE FOR THE MOST
CURRENT INFORMATION AT WWW.MULEHIDE.COM***



NOTES:

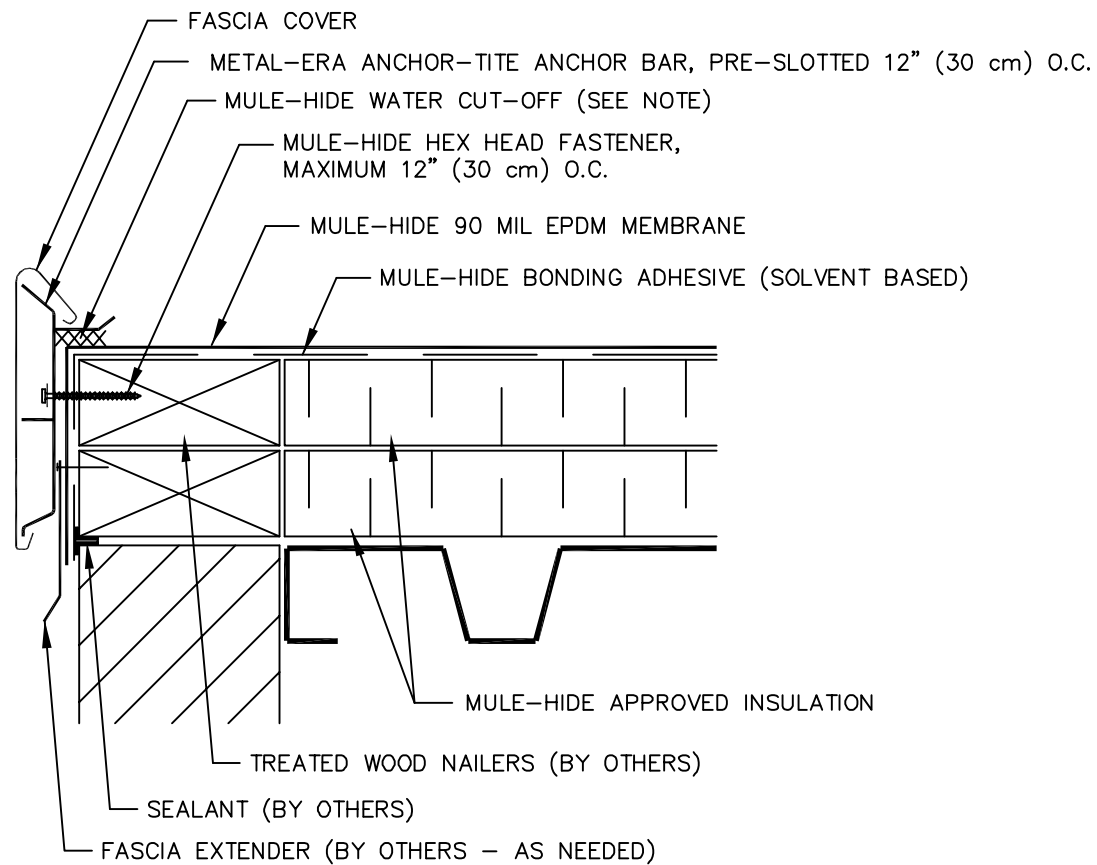
1. TREATED WOOD NAILER MUST EXTEND PAST TOTAL WIDTH OF GRAVEL STOP DECK FLANGE.
2. A 4.5" x 6" (12 x 15 cm) AND A 9" x 12" (23 x 30 cm) PIECE OF UNCURED FLASHING TAPE MUST BE CENTERED OVER FIELD SPLICE AT ANGLE CHANGE.
3. CAULK ALL EDGES WITH LAP SEALANT AS SHOWN ABOVE.
4. REFER TO METAL-ERA PERMA-TITE FASCIA SYSTEM 200 INSTALLATION INSTRUCTION MANUAL FOR STEP-BY-STEP INSTALLATION PROCEDURES.

**MULE-HIDE
PRODUCTS CO., INC.
2005**

Metal-Era Perma-Tite Edge Detail

SYSTEMS:
Fully Adhered 90mil System

DETAIL NO.:
MHE-500



NOTE: Metal-Era Anchor-Tite
 APPLY AN ADDITIONAL BEAD OF WATER CUT-OFF ALONG THE EDGE OF THE MEMBRANE SPLICE THAT IS PERPENDICULAR TO THE ANCHOR BAR.

**MULE-HIDE
 PRODUCTS CO., INC.
 2005**

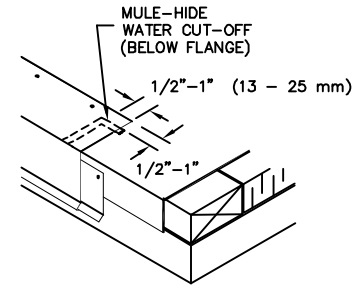
Metal-Era Anchor-Tite Edge Detail

SYSTEMS:
 Fully Adhered 90mil System

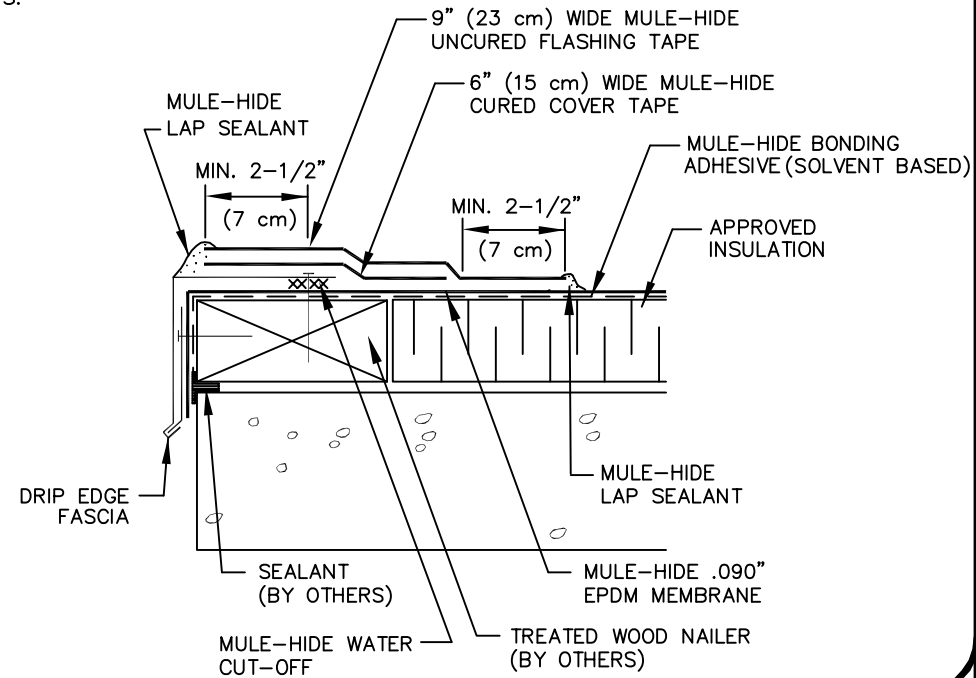
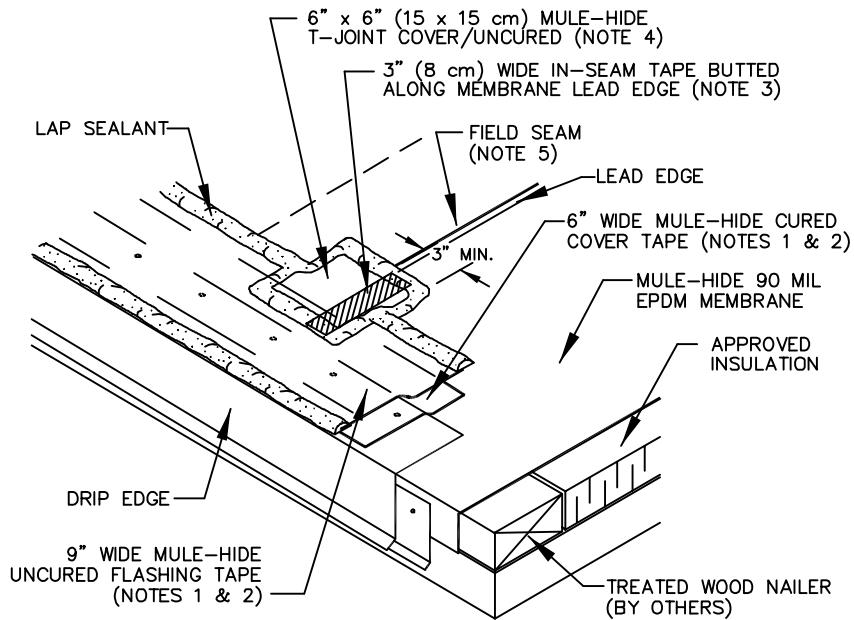
DETAIL NO.:
MHE-501

NOTES:

1. DECK FLANGE MUST BE TOTALLY COVERED BY MULE-HIDE CURED COVER TAPE (USE TAPE PRIMER) FLASHING WITH MINIMUM 2-1/2" (7 cm) COVERAGE PAST NAIL HEADS.
2. PRIOR TO INSTALLING MULE-HIDE TAPE (BOTH LAYERS), APPLY MULE-HIDE TAPE PRIMER AND ALLOW TO PROPERLY DRY.
3. INSTALL 3" x 6.5" (8 x 16 cm) IN-SEAM TAPE (IN CONJUNCTION WITH TAPE PRIMER) ALONG LEADING EDGE OF MEMBRANE SEAM OVERLAPPING SEAM TAPE.
4. INSTALL 6" (15 cm) WIDE MULE-HIDE UNCURED FLASHING TAPE (IN CONJUNCTION WITH TAPE PRIMER) AT FIELD SEAM INTERSECTIONS AND SEAL WITH LAP SEALANT AS SHOWN.
5. FOLLOW STANDARD FIELD SEAM REQUIREMENTS FOR 30 YEAR WARRANTY SYSTEMS.



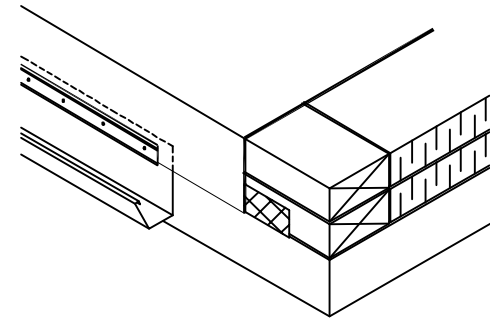
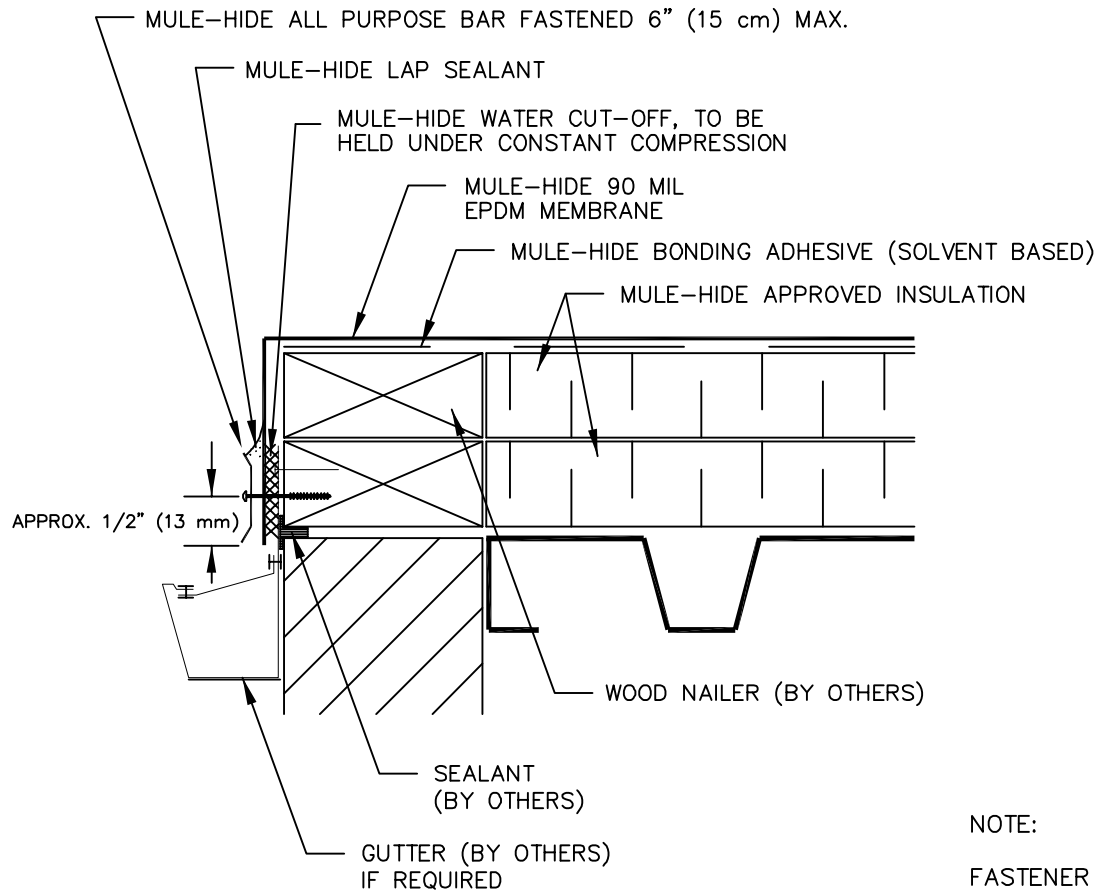
ALL REQUIREMENTS FOR 30 YEAR WARRANTY SYSTEM MUST BE FOLLOWED



**MULE-HIDE
PRODUCTS CO., INC.
2005**

Drip Edge
SYSTEMS:
Fully Adhered 90mil System

DETAIL NO.:
MHE-502



NOTE:

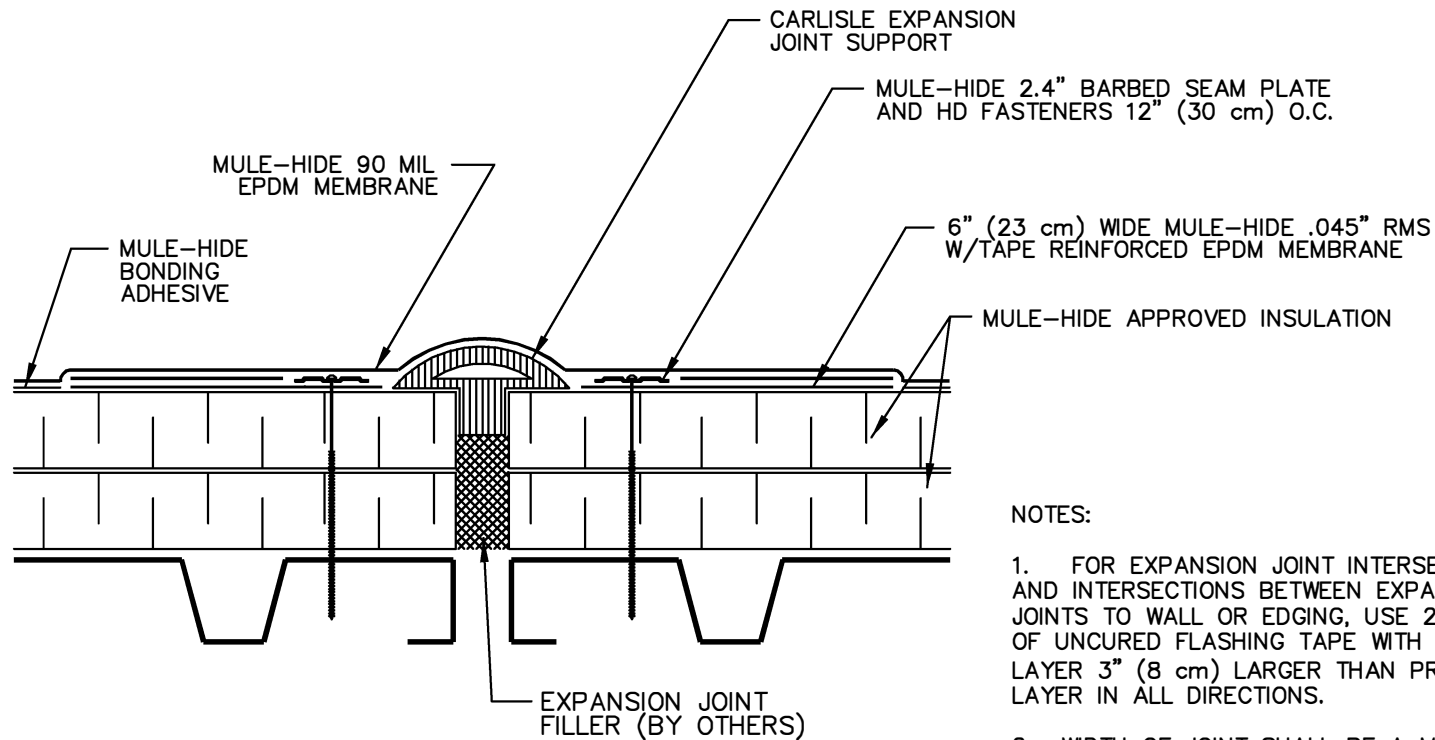
FASTENER PATTERN OF METAL BAR MUST PROVIDE CONSTANT COMPRESSION ON WATER CUT-OFF.

**MULE-HIDE
PRODUCTS CO., INC.
2005**

All Purpose Bar Termination

SYSTEMS:
Fully Adhered 90mil System

DETAIL NO.:
MHE-503



NOTES:

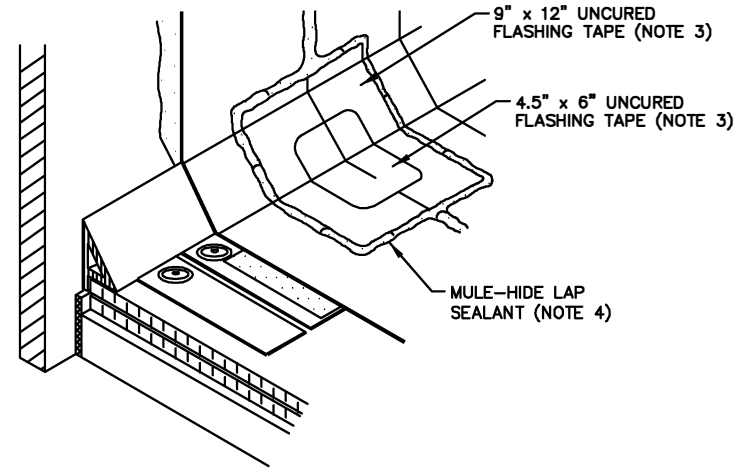
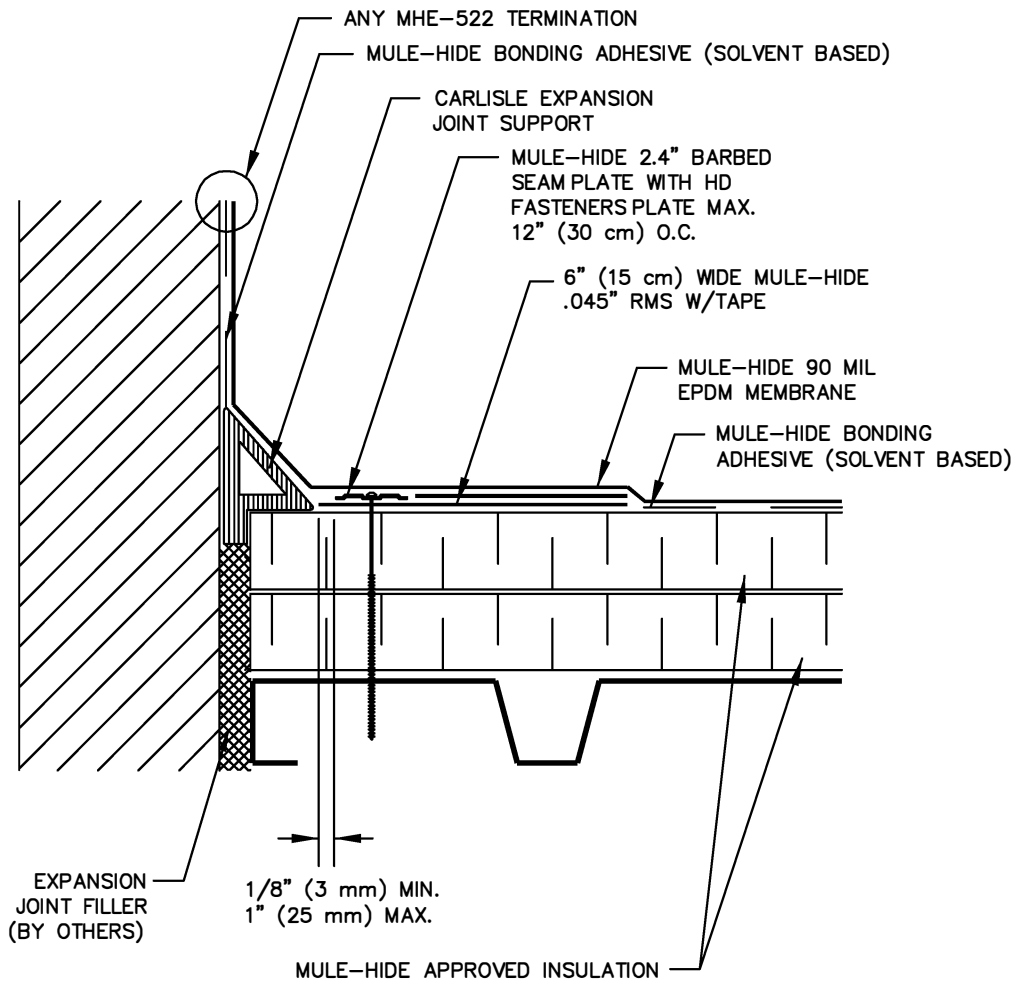
1. FOR EXPANSION JOINT INTERSECTIONS AND INTERSECTIONS BETWEEN EXPANSION JOINTS TO WALL OR EDGING, USE 2 LAYERS OF UNCURED FLASHING TAPE WITH EACH LAYER 3" (8 cm) LARGER THAN PREVIOUS LAYER IN ALL DIRECTIONS.
2. WIDTH OF JOINT SHALL BE A MINIMUM OF 3/4" (19 mm) AND SHALL NOT EXCEED 3" (8 cm).

**MULE-HIDE
PRODUCTS CO., INC.
2005**

Deck to Deck Expansion Joint

SYSTEMS:
Fully Adhered 90mil System

DETAIL NO.:
MHE-504



NOTES:

1. ALL OUTSIDE AND INSIDE CORNERS REQUIRE TWO CORNER APPLICATIONS AS PER DETAILS MHE-514, MHE-515, AND MHE-516.
2. WIDTH OF JOINT SHALL BE A MINIMUM OF 3/4" (19 mm) AND SHALL NOT EXCEED 2" (5 cm).
3. A 4.5" x 6" (12 x 15 cm) AND A 9" x 12" (23 x 30 cm) PIECE OF UNCURED FLASHING TAPE MUST BE CENTERED OVER THE FIELD SEAM AT ANGLE CHANGE.
4. CAULK ALL EDGES WITH LAP SEALANT AS SHOWN ABOVE.

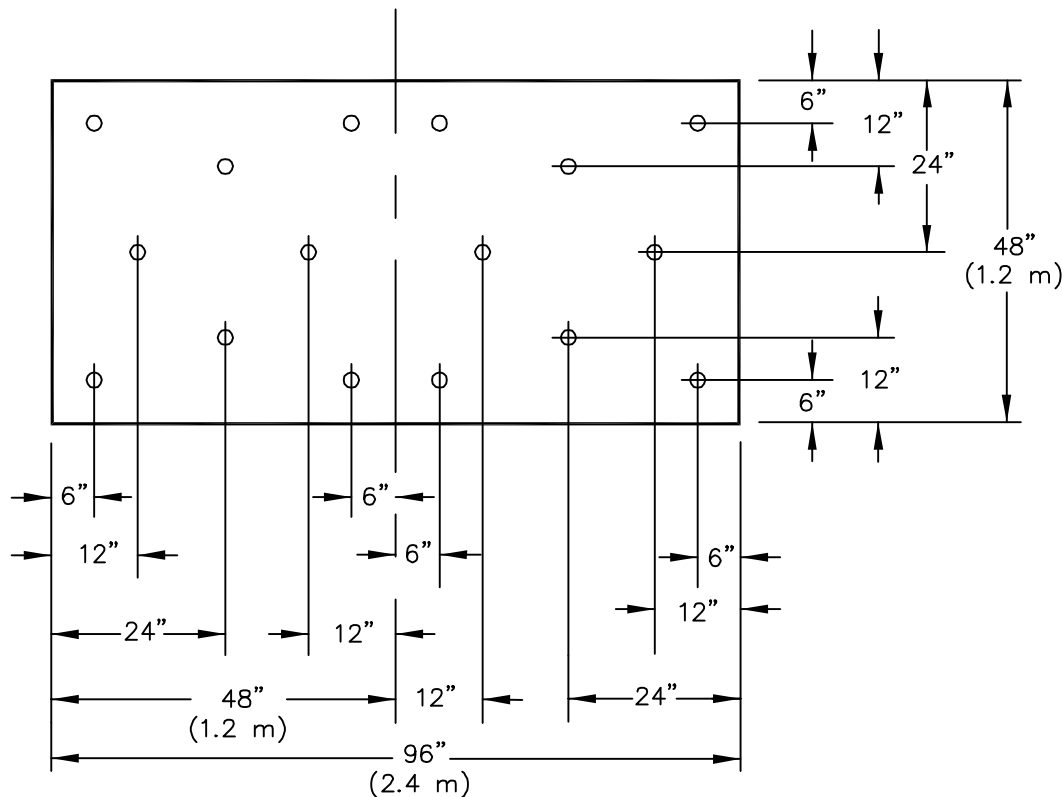
**MULE-HIDE
PRODUCTS CO., INC.
2005**

Deck To Wall Expansion Joint

SYSTEMS:
Fully Adhered 90mil System

DETAIL NO.:
MHE-505

MULE-HIDE'S REQUIRED FASTENING PATTERN FOR MULE-HIDE APPROVED INSULATION ON FULLY ADHERED 90mil ROOFING SYSTEMS



NOTES:

1. THE SAME FASTENING PATTERN CAN BE USED FOR SECUREMENT OF OSB/ POLYISOCYANURATE COMPOSITE BOARD.
2. IF A FACTORY MUTUAL (FM) RATING IS NOT REQUIRED, THE FOLLOWING TOLERANCES ON DIMENSIONS BETWEEN FASTENERS ARE PERMITTED.

DIMENSIONS SHOWN ON DRAWING	PERMITTED TOLERANCES
6" (15 cm)	$\pm 1/2"$ (13 mm)
12" (30 cm)	$\pm 1"$ (3 cm)
24" (60 cm)	$\pm 2"$ (5 cm)

3. IF A FACTORY MUTUAL (FM) RATING IS REQUIRED, ADDITIONAL INSULATION FASTENERS WILL BE REQUIRED AT THE ROOF PERIMETER AND CORNERS. CONTACT MULE-HIDE FOR CLARIFICATION.

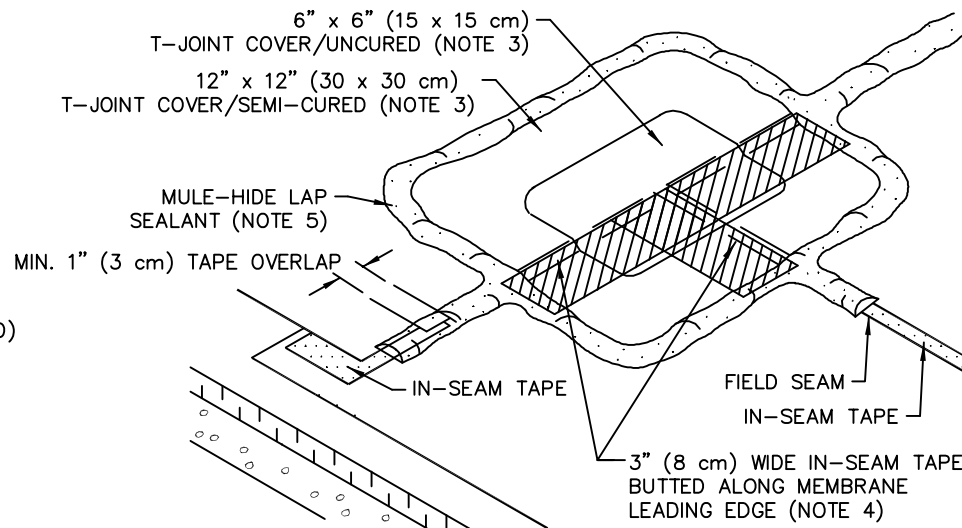
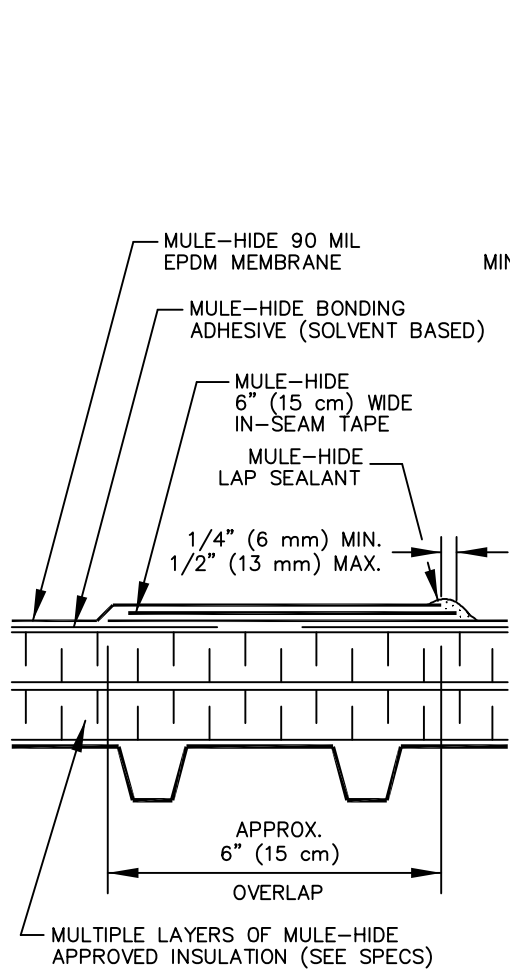
4. FOR CRITERIA ON INSULATION FASTENERS AND PLATES, SEE SPECIFICATIONS.

**MULE-HIDE
PRODUCTS CO., INC.
2005**

4' X 8' Insulation Attachment

SYSTEMS:
Fully Adhered 90mil System

DETAIL NO.:
MHE-506



NOTES:

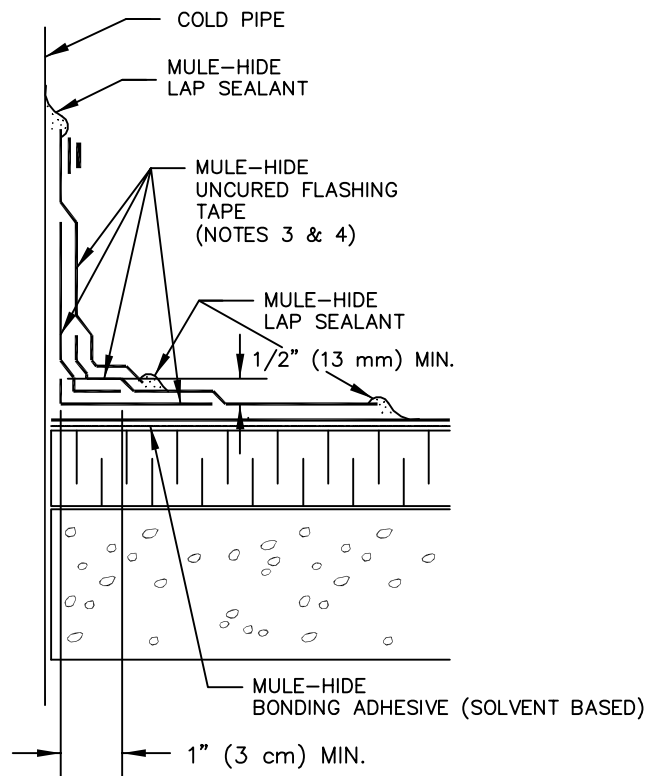
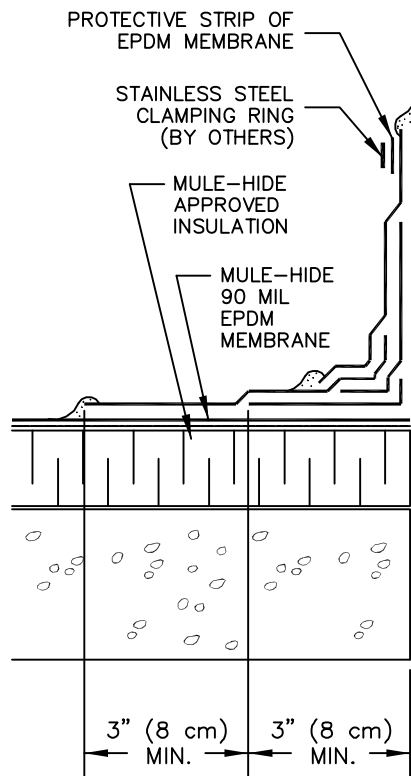
1. PRIOR TO INSTALLATION OF IN-SEAM TAPE, APPLY TAPE PRIMER TO SEAM AREAS.
2. IN-SEAM TAPE IS TO BE OVERLAPPED A MINIMUM OF 1" (3 cm) AT THE ENDS OF EACH CUT PIECE.
3. AT FIELD SEAM INTERSECTIONS, APPLY A 6" x 6"(15 x 15 cm) T-JOINT COVER (UNCURED) FLASHING OVERLAID WITH A 12" x 12" (30 x 30 cm) T-JOINT COVER (SEMI-CURED) FLASHING.
4. INSTALL 3" (8 cm) WIDE IN-SEAM TAPE (IN CONJUNCTION WITH TAPE PRIMER) ALONG LEADING EDGE OF MEMBRANE SEAM OVERLAPPING EXPOSED IN-SEAM TAPE FROM THE SEAM.
5. CAULK ALL EDGES WITH LAP SEALANT AS SHOWN ABOVE.

**MULE-HIDE
PRODUCTS CO., INC.
2005**

Membrane Splice With In-Seam Tape

SYSTEMS:
Fully Adhered 90mil System

DETAIL NO.:
MHE-508



NOTES:

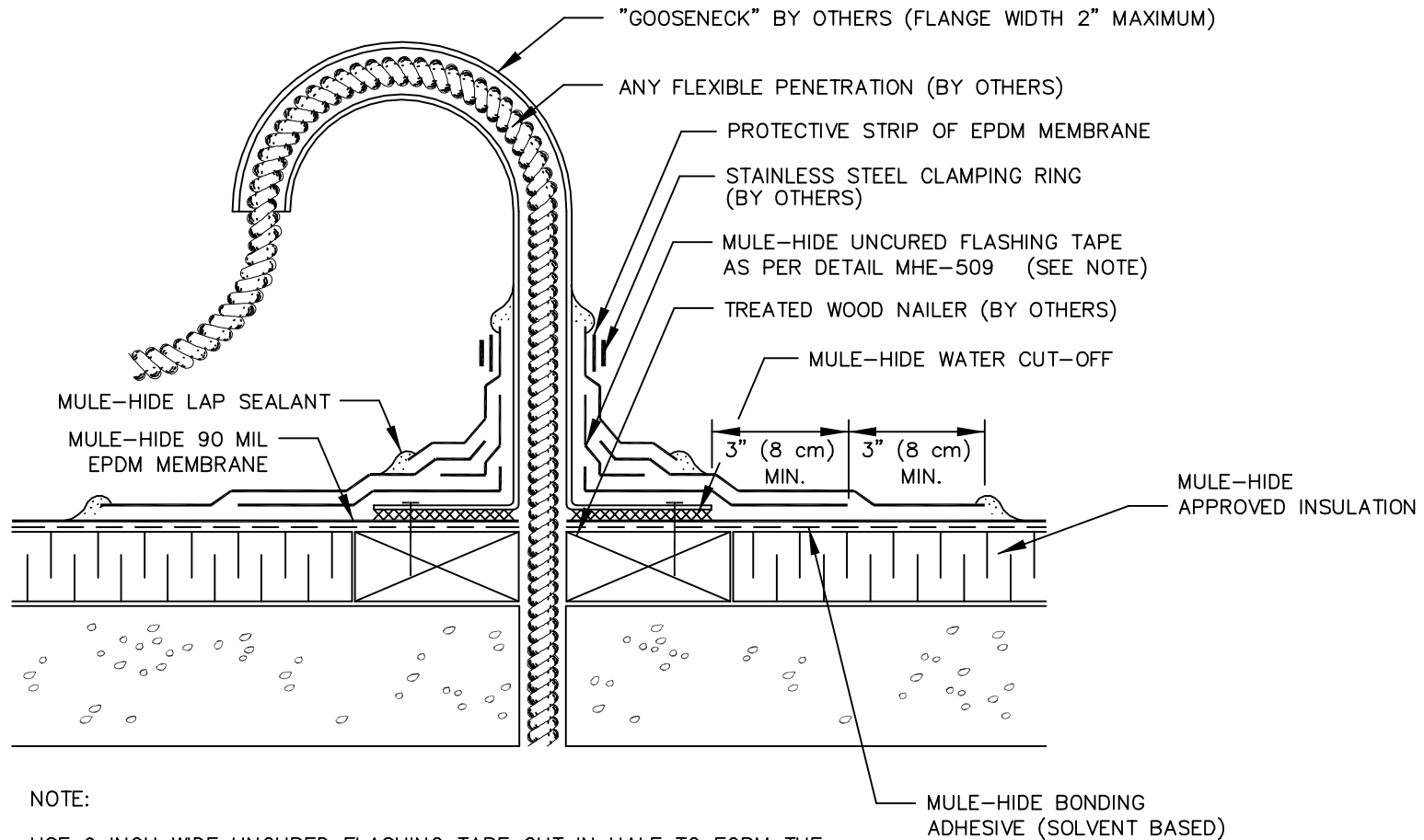
1. REMOVE ALL LEAD AND OTHER FLASHING BEFORE INSTALLING FIELD-FABRICATED PIPE FLASHING.
2. MEMBRANE SECUREMENT REQUIRED AROUND ALL PIPES GREATER THAN 18 INCHES (50 cm) IN DIAMETER.
3. UNCURED FLASHING TAPE WRAPPED AROUND THE PIPE SHALL HAVE 3" (8 cm) MINIMUM SEAM.
4. USE 9 INCH WIDE UNCURED FLASHING TAPE CUT IN HALF TO FORM THE FIRST WRAP AROUND PIPE. THE SECOND WRAP SHALL BE FORMED USING A FULL WIDTH OF 9 INCH WIDE UNCURED FLASHING TAPE.

**MULE-HIDE
PRODUCTS CO., INC.
2005**

Field Fabricated Pipe Seal

SYSTEMS:
Fully Adhered 90mil System

DETAIL NO.:
MHE-509



NOTE:

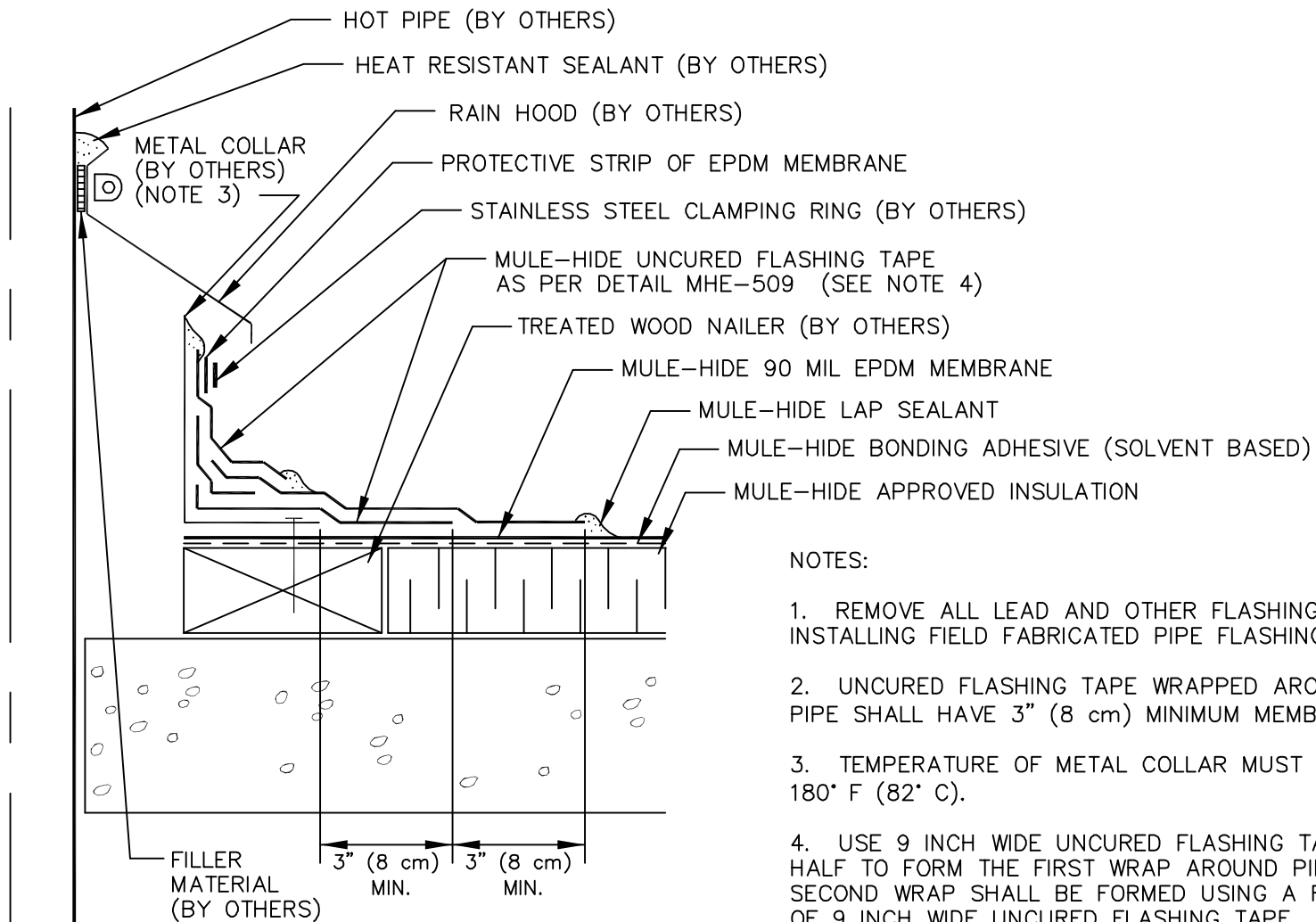
USE 9 INCH WIDE UNCURED FLASHING TAPE CUT IN HALF TO FORM THE FIRST WRAP AROUND THE PIPE. THE SECOND WRAP SHALL BE FORMED USING A FULL WIDTH OF 9 INCH WIDE UNCURED FLASHING TAPE.

**MULE-HIDE
PRODUCTS CO., INC.
2005**

Flexible Penetration

SYSTEMS:
Fully Adhered 90mil System

DETAIL NO.:
MHE-510



NOTES:

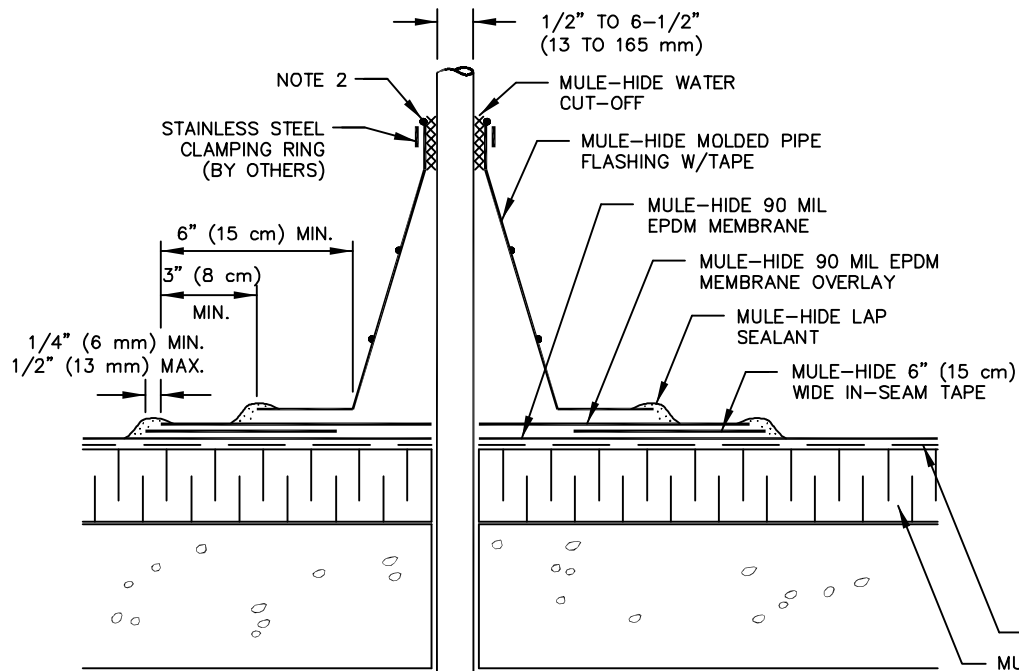
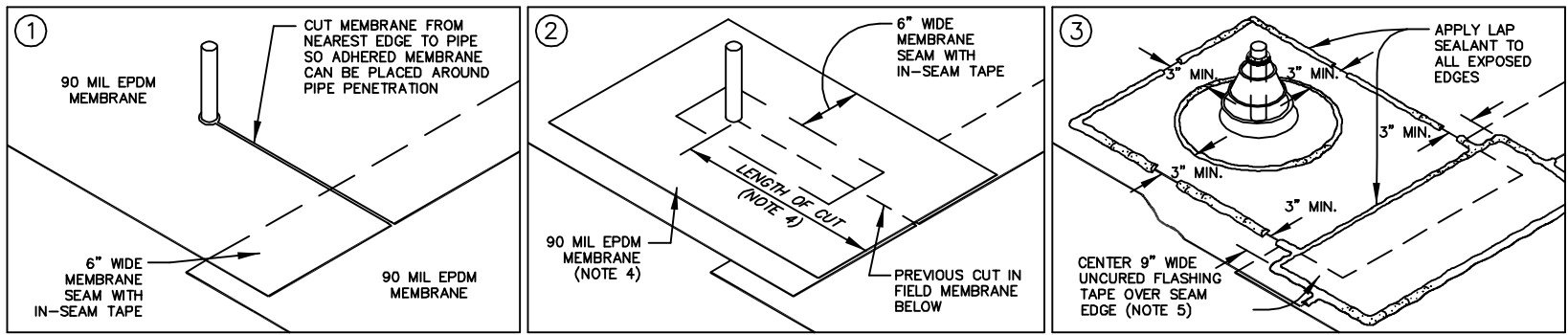
1. REMOVE ALL LEAD AND OTHER FLASHING BEFORE INSTALLING FIELD FABRICATED PIPE FLASHING.
2. UNCURED FLASHING TAPE WRAPPED AROUND THE PIPE SHALL HAVE 3" (8 cm) MINIMUM MEMBRANE SEAM.
3. TEMPERATURE OF METAL COLLAR MUST NOT EXCEED 180° F (82° C).
4. USE 9 INCH WIDE UNCURED FLASHING TAPE CUT IN HALF TO FORM THE FIRST WRAP AROUND PIPE. THE SECOND WRAP SHALL BE FORMED USING A FULL WIDTH OF 9 INCH WIDE UNCURED FLASHING TAPE.

**MULE-HIDE
PRODUCTS CO., INC.
2005**

Field Fabricated Hot Stack

SYSTEMS:
Fully Adhered 90mil System

DETAIL NO.:
MHE-511



NOTES:

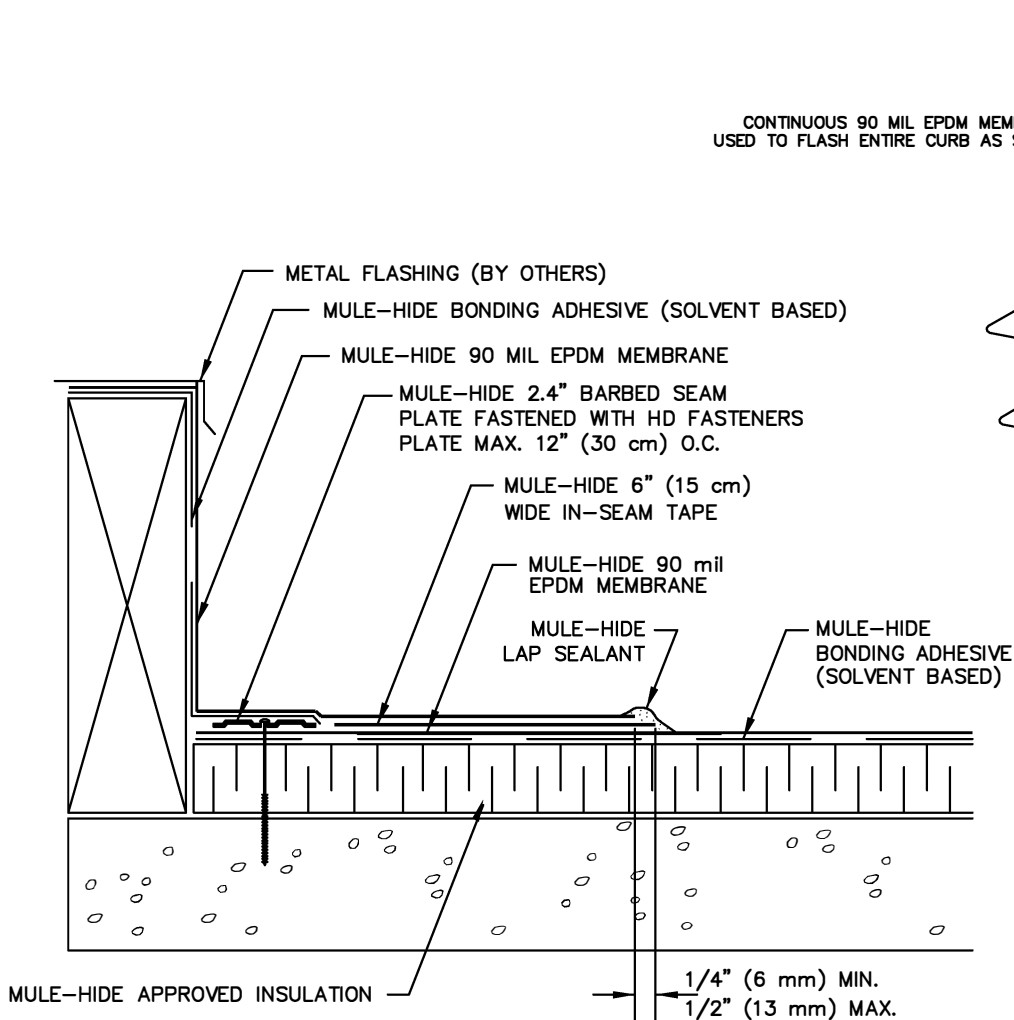
1. REMOVE ALL LEAD AND OTHER FLASHING.
2. PIPE FLASHING MUST HAVE INTACT RIB AT TOP EDGE, REGARDLESS OF PIPE DIAMETER.
3. DECK FLANGES OF THE MOLDED PIPE FLASHING SHALL NOT BE OVERLAPPED, CUT OR APPLIED OVER ANY ANGLE CHANGE.
4. 90 MIL MEMBRANE OVERLAY AT CUT IN FIELD MEMBRANE MUST EXTEND 3 INCHES BEYOND MOLDED PIPE FLASHING FLANGE ON 3 SIDES *AND* EXTEND THE LENGTH OF THE CUT IN THE FIELD MEMBRANE AS SHOWN ABOVE.
5. CENTER 9" WIDE UNCURED FLASHING TAPE OVER THE MEMBRANE SPLICE EDGE AND EXTEND 3" BEYOND THE MEMBRANE OVERLAY AS SHOWN ABOVE.
6. CAULK ALL EDGES WITH LAP SEALANT AS SHOWN ABOVE.

**MULE-HIDE
PRODUCTS CO., INC.
2005**

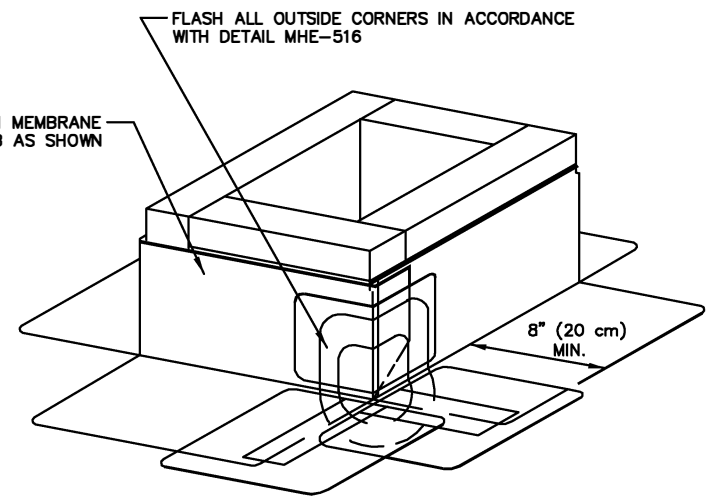
Mule-Hide Molded Pipe Flashing
with Tape

SYSTEMS:
Fully Adhered 90mil System

DETAIL NO.:
MHE-512



CONTINUOUS 90 MIL EPDM MEMBRANE USED TO FLASH ENTIRE CURB AS SHOWN



LAP SEALANT IS REQUIRED ON ALL EXPOSED FLASHING EDGES

NOTES:

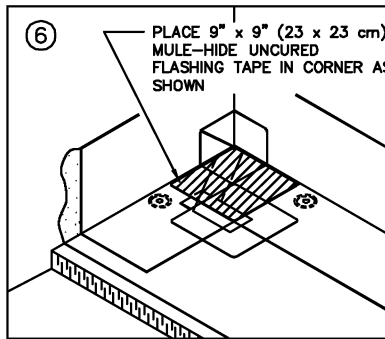
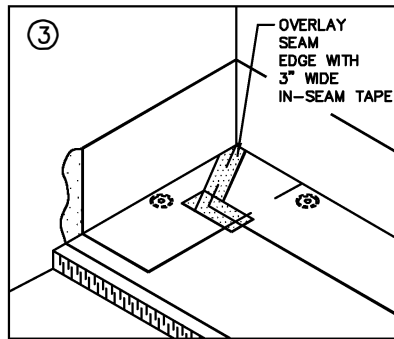
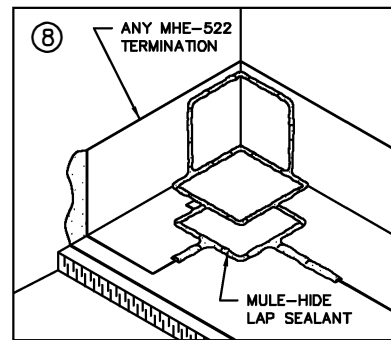
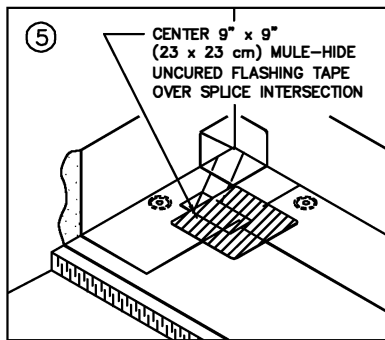
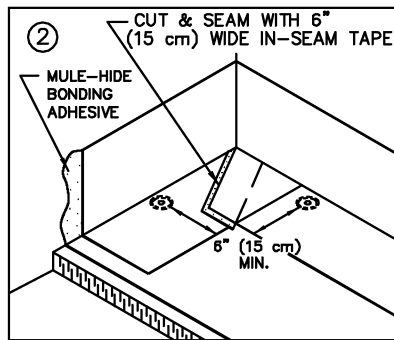
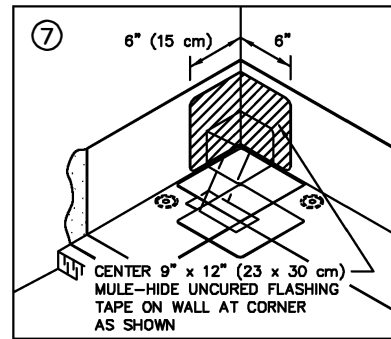
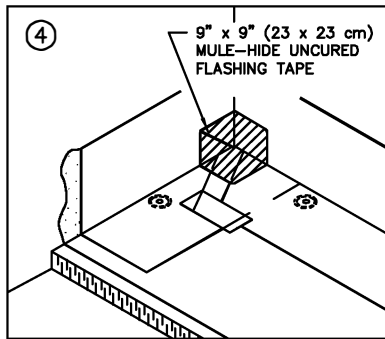
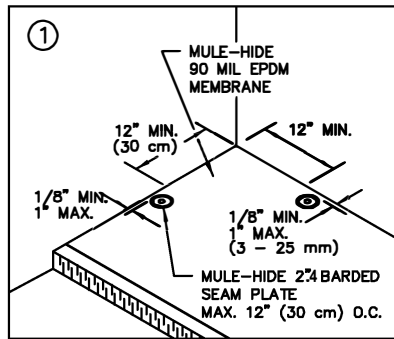
1. IF VERTICAL SEAM IS NOT LOCATED AT CORNER, A 4.5" x 6" (12 x 15 cm) AND A 9" x 12" (23 x 30 cm) PIECE OF UNCURED FLASHING TAPE MUST BE CENTERED OVER FIELD SPLICE AT ANGLE CHANGE.
2. FASTENING PLATES MAY BE INSTALLED VERTICALLY.
3. APPLY TAPE PRIMER PRIOR TO INSTALLING IN-SEAM TAPE.

**MULE-HIDE
PRODUCTS CO., INC.
2005**

Curb Flashing

SYSTEMS:
Fully Adhered 90mil System

DETAIL NO.:
MHE-513



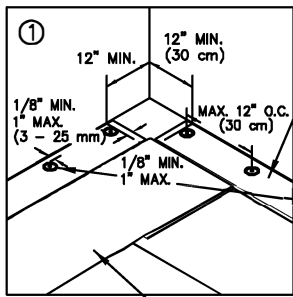
NOTES:

1. CAULK ALL EDGES WITH LAP SEALANT.
2. TAPE PRIMER MUST BE USED IN CONJUNCTION WITH MULE-HIDE UNCURED FLASHING TAPE.

**MULE-HIDE
PRODUCTS CO., INC.
2005**

Inside Corner With
Separate EPDM Wall Flashing
SYSTEMS:
Fully Adhered 90mil System

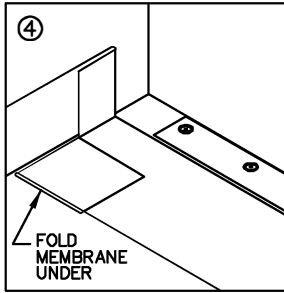
DETAIL NO.:
MHE-514



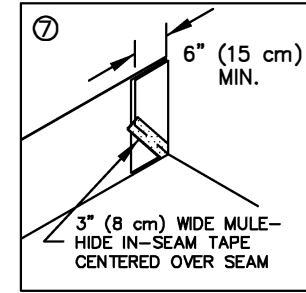
6" (23 cm) WIDE
MULE-HIDE .045"
RMS W/TAPE

MULE-HIDE 2.4"
BARBED SEAM
PLATE AND
MULE-HIDE HD
FASTENER
MAX. 12"
(30 cm) O.C.

MULE-HIDE 90 MIL
EPDM MEMBRANE

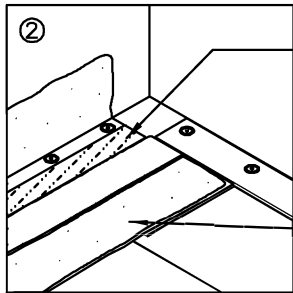


FOLD
MEMBRANE
UNDER



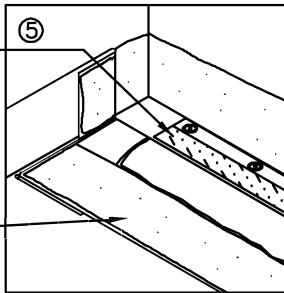
COMPLETE VERTICAL
SEAM AND APPLY
3" (8 cm) WIDE
MULE-HIDE IN-SEAM TAPE
TO THE SEAM EDGE
AS SHOWN

3" (8 cm) WIDE MULE-
HIDE IN-SEAM TAPE
CENTERED OVER SEAM

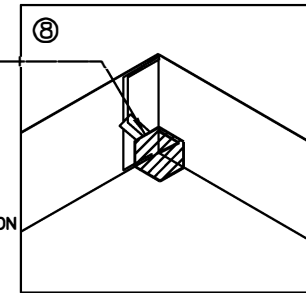


6" (15 cm) WIDE
IN-SEAM TAPE

MULE-HIDE
BONDING
ADHESIVE

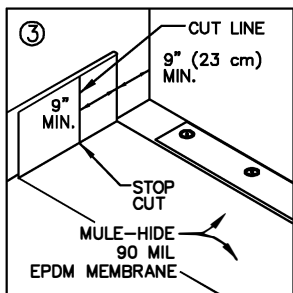


5



APPROX. 9" X 9"
(23 x 23 cm)
MULE-HIDE UNCURED
FLASHING TAPE
(SIMILAR TO DETAIL
MHE-514)

MULE-HIDE UNCURED
FLASHING TAPE MUST
BE USED IN CONJUNCTION
WITH TAPE PRIMER

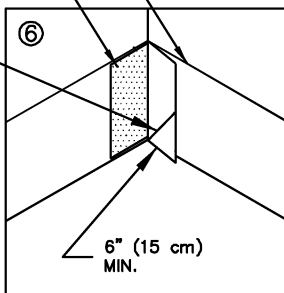


NOTES:

1. FOR RMS SECUREMENT, REFER
TO DETAIL MHE-521

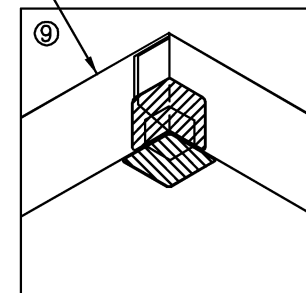
MULE-HIDE 6" (15 cm)
WIDE IN-SEAM TAPE

MULE-HIDE 90 MIL
EPDM MEMBRANE



CUT 45°

6" (15 cm)
MIN.



ANY MHE-522
TERMINATION

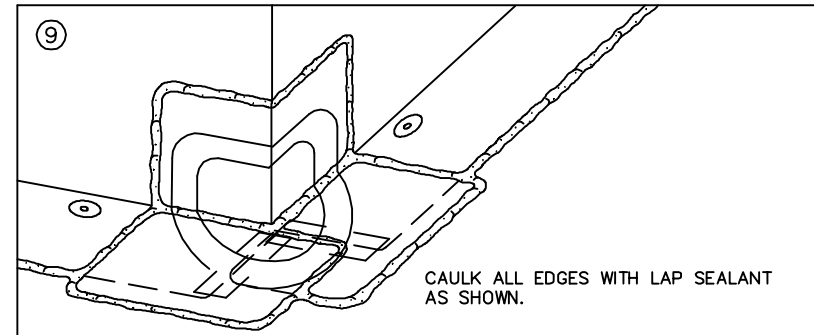
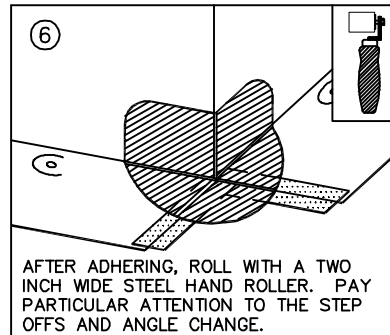
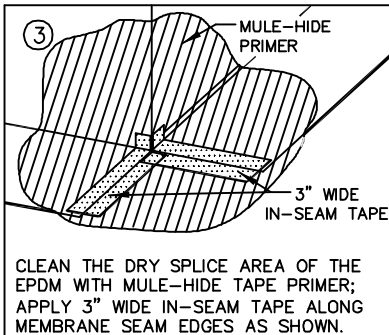
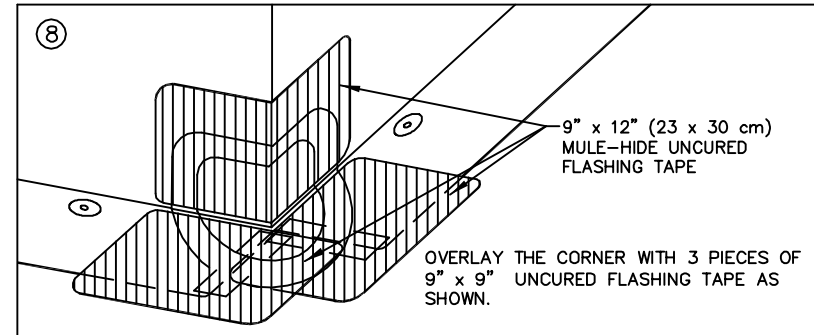
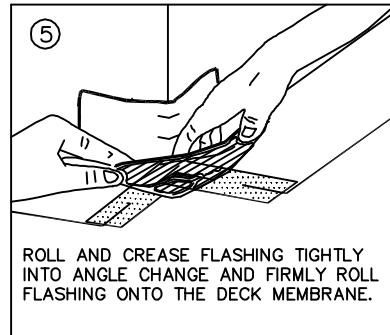
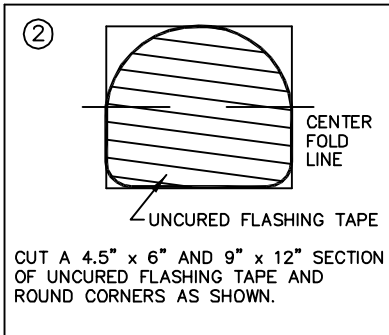
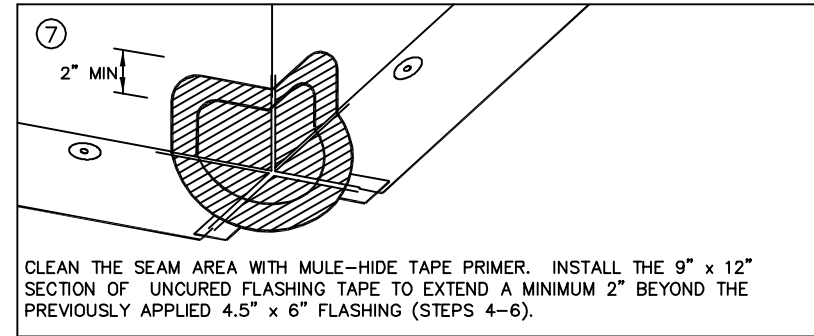
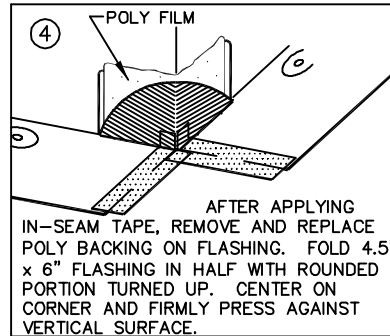
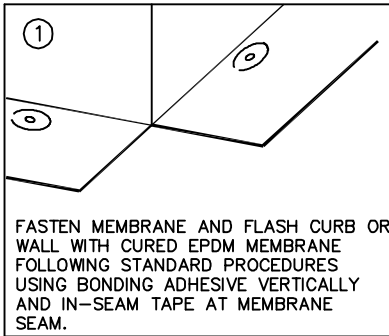
APPLY 9" X 9"
(23 x 23 cm) MULE-HIDE
UNCURED FLASHING TAPE
ON DECK MEMBRANE AND
9" X 12" (23 x 30 cm)
UNCURED FLASHING TAPE
ON WALL AT CORNER AS
SHOWN (SIMILAR TO
DETAIL MHE-514)

CAULK ALL EDGES WITH
LAP SEALANT (SIMILAR
TO DETAIL MHE-514)

**MULE-HIDE
PRODUCTS CO., INC.
2005**

Inside Corner With
Continuous EPDM Wall Flashing
SYSTEMS:
Fully Adhered 90mil System

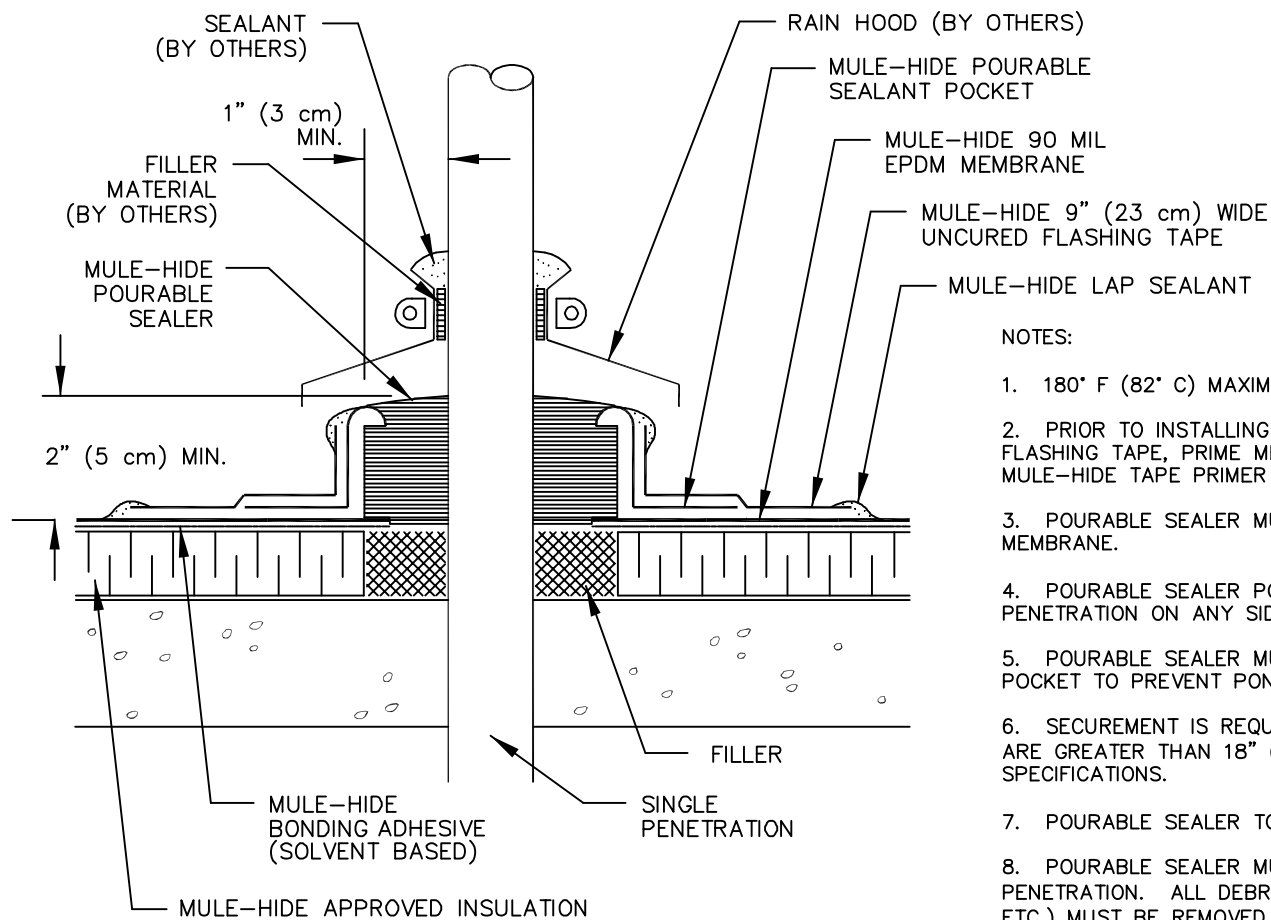
DETAIL NO.:
MHE-515



**MULE-HIDE
PRODUCTS CO., INC.
2005**

Outside Corner With Uncured
Flashing Tape
SYSTEMS:
Fully Adhered 90mil System

DETAIL NO.:
MHE-516



NOTES:

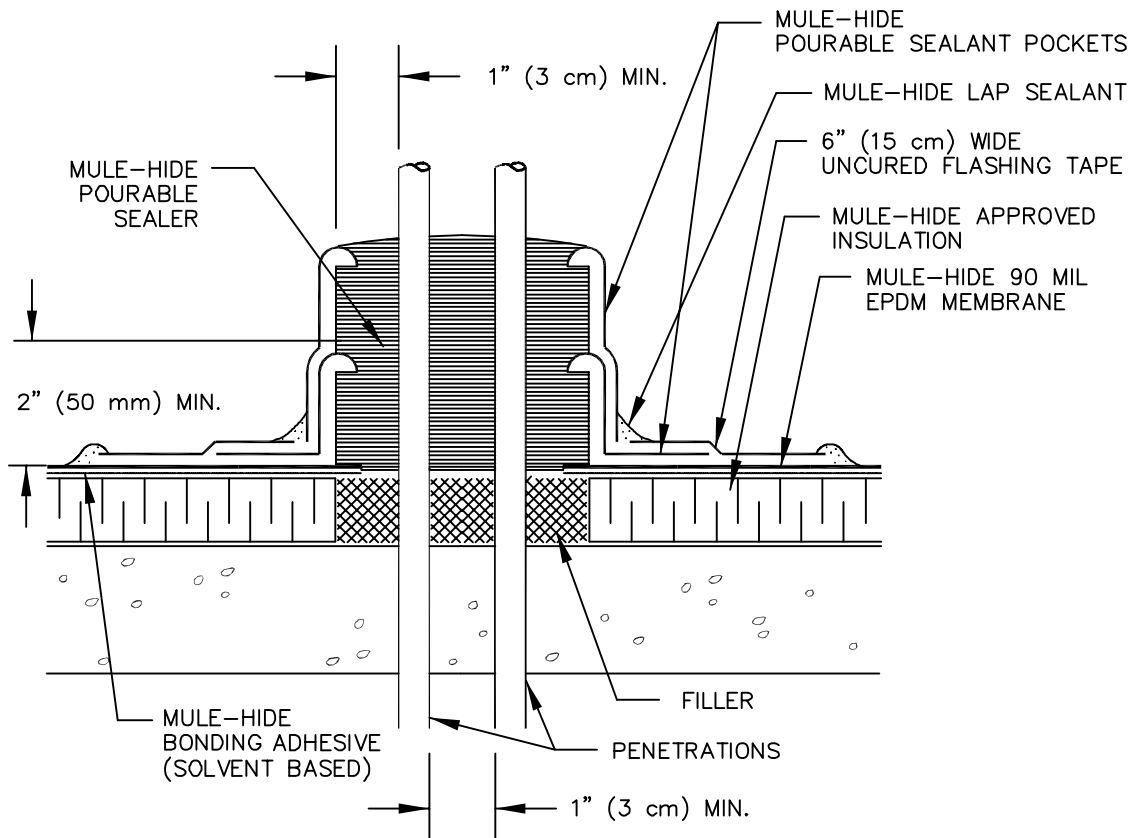
1. 180° F (82° C) MAXIMUM TEMPERATURE.
2. PRIOR TO INSTALLING POURABLE SEALER POCKET AND UNCURED FLASHING TAPE, PRIME MEMBRANE AND POURABLE SEALER POCKET WITH MULE-HIDE TAPE PRIMER AND ALLOW TO PROPERLY DRY.
3. POURABLE SEALER MUST CONTACT UNCURED FLASHING AND DECK MEMBRANE.
4. POURABLE SEALER POCKET TO BE 1" (3 cm) MINIMUM FROM PENETRATION ON ANY SIDE.
5. POURABLE SEALER MUST COMPLETELY FILL POURABLE SEALER POCKET TO PREVENT PONDING OF WATER.
6. SECUREMENT IS REQUIRED FOR POURABLE SEALER POCKETS WHICH ARE GREATER THAN 18" (50 cm) IN DIAMETER. REFER TO SPECIFICATIONS.
7. POURABLE SEALER TO BE MINIMUM 2" (5 cm) DEEP.
8. POURABLE SEALER MUST CONTACT THE BARE SURFACE OF THE PENETRATION. ALL DEBRIS (PAINT, RUST, LEAD, OTHER FLASHINGS, ETC.) MUST BE REMOVED FROM THE PENETRATION.
9. FOR ADDITIONAL INFORMATION, REFER TO MULE-HIDE POURABLE SEALER POCKET INSTALLATION INSTRUCTIONS IN THE EPDM SECTION.

**MULE-HIDE
PRODUCTS CO., INC.
2005**

Pourable Sealer Pocket With Rain Hood

SYSTEMS:
Fully Adhered 90mil System

DETAIL NO.:
MHE-517



NOTES:

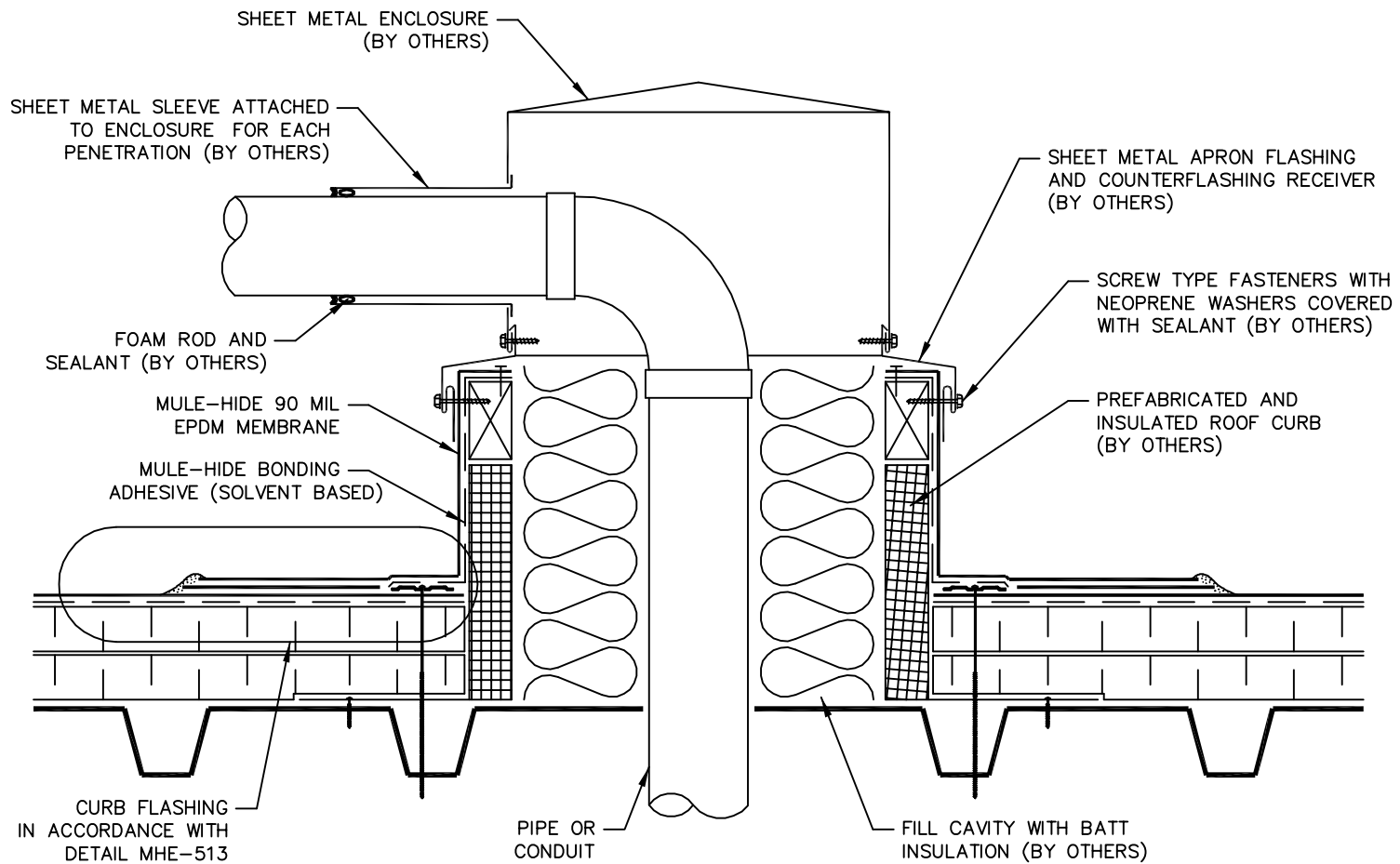
1. 180° F (82° C) MAXIMUM TEMPERATURE.
2. PRIOR TO INSTALLING POURABLE SEALER POCKET AND UNCURED FLASHING TAPE, PRIME MEMBRANE AND POURABLE SEALER POCKET WITH MULE-HIDE TAPE PRIMER AND ALLOW TO PROPERLY DRY.
3. POURABLE SEALER MUST CONTACT UNCURED FLASHING AND DECK MEMBRANE.
4. POURABLE SEALER POCKET TO BE 1" (3 cm) MINIMUM FROM PENETRATION ON ANY SIDE.
5. POURABLE SEALER MUST COMPLETELY FILL POURABLE SEALER POCKET TO PREVENT PONDING OF WATER.
6. SECUREMENT IS REQUIRED FOR POURABLE SEALER POCKETS WHICH ARE GREATER THAN 18" (50 cm) IN DIAMETER. REFER TO SPECIFICATIONS.
7. POURABLE SEALER TO BE MINIMUM 2" (5 cm) DEEP.
8. POURABLE SEALER MUST CONTACT THE BARE SURFACE OF THE PENETRATION. ALL DEBRIS (PAINT, RUST, LEAD, OTHER FLASHINGS, ETC.) MUST BE REMOVED FROM THE PENETRATION.
9. FOR ADDITIONAL INFORMATION, REFER TO MULE-HIDE POURABLE SEALER POCKET INSTALLATION INSTRUCTIONS IN THE EPDM SECTION.

**MULE-HIDE
PRODUCTS CO., INC.
2005**

Pourable Sealer Pocket
Double Application

SYSTEMS:
Fully Adhered 90mil System

DETAIL NO.:
MHE-518

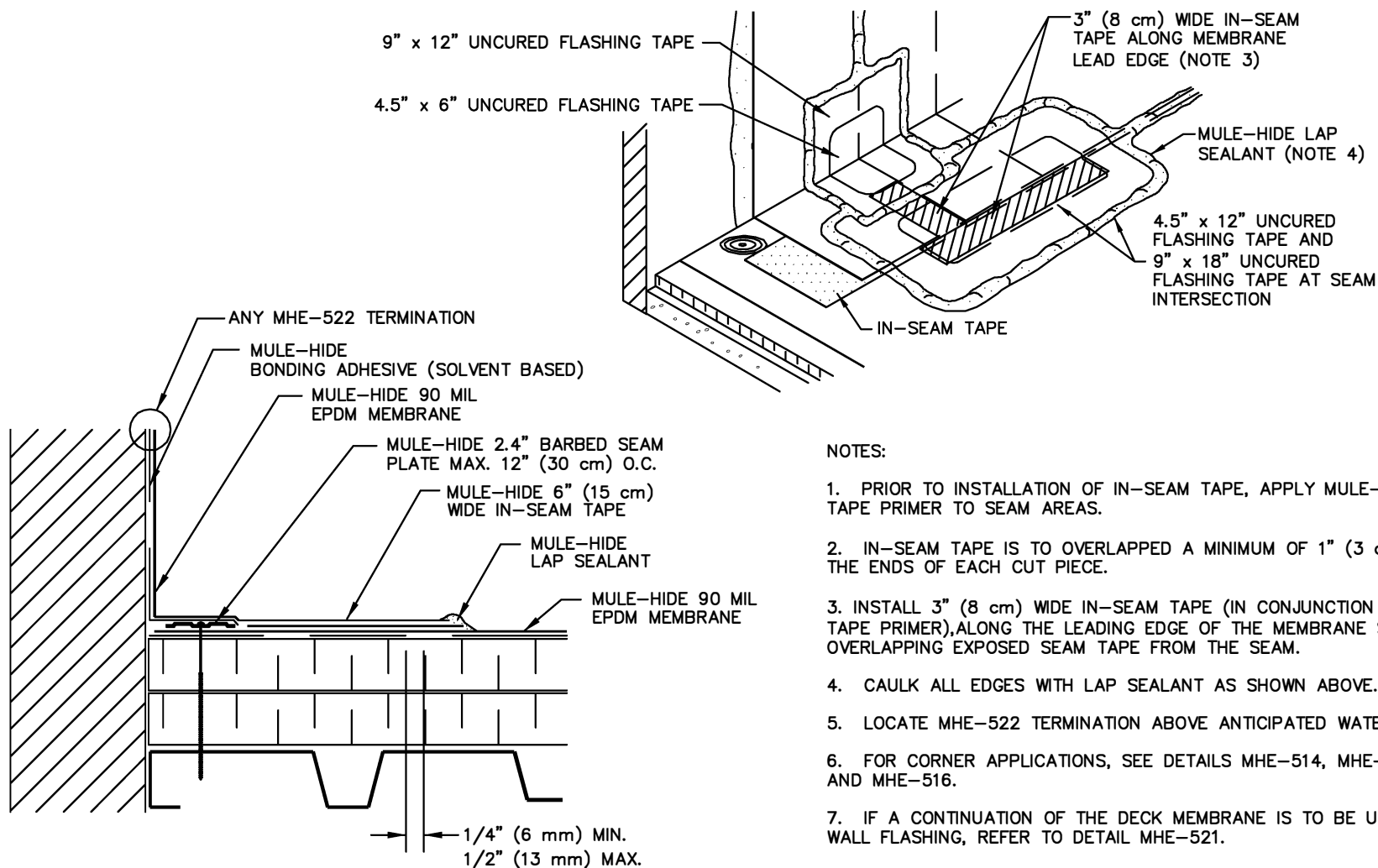


**MULE-HIDE
PRODUCTS CO., INC.
2005**

Multiple Penetrations Curb Detail

SYSTEMS:
Fully Adhered 90mil System

DETAIL NO.:
MHE-519



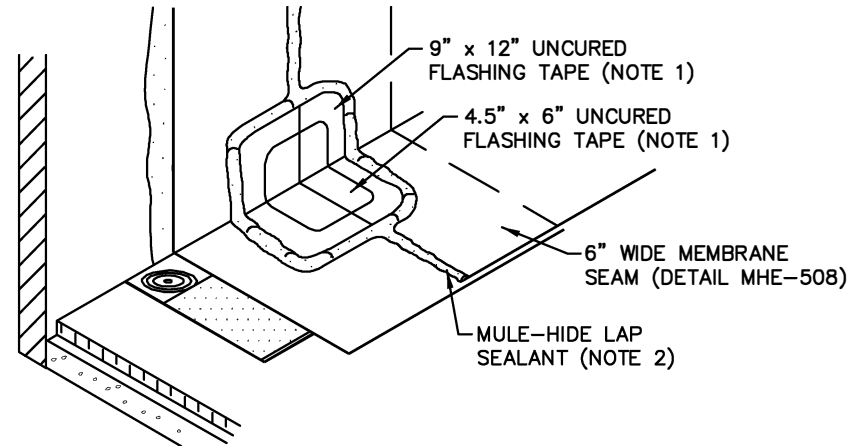
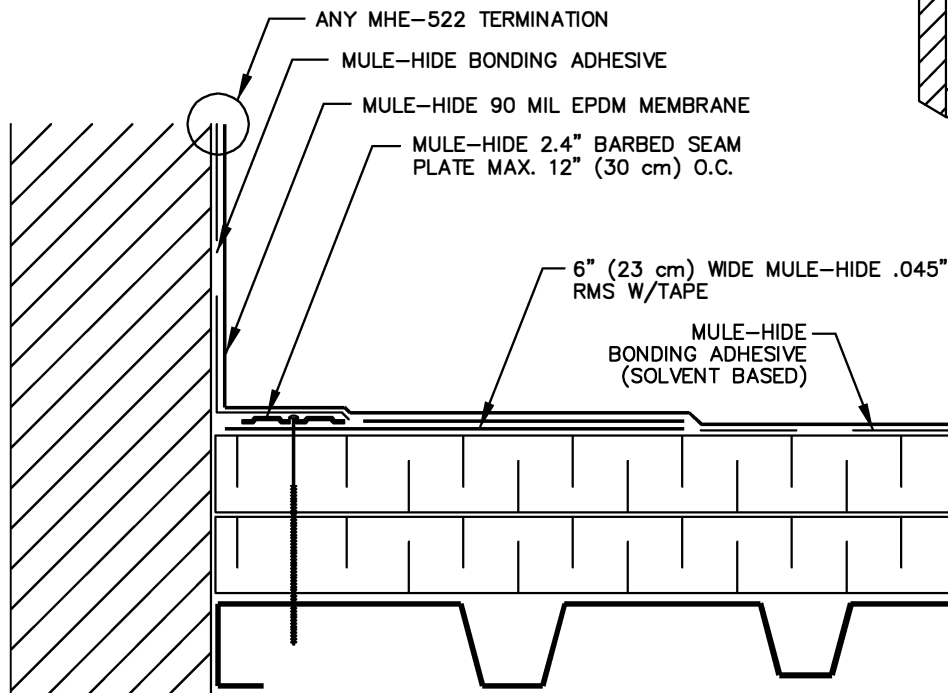
NOTES:

1. PRIOR TO INSTALLATION OF IN-SEAM TAPE, APPLY MULE-HIDE TAPE PRIMER TO SEAM AREAS.
2. IN-SEAM TAPE IS TO OVERLAPPED A MINIMUM OF 1" (3 cm) AT THE ENDS OF EACH CUT PIECE.
3. INSTALL 3" (8 cm) WIDE IN-SEAM TAPE (IN CONJUNCTION WITH TAPE PRIMER), ALONG THE LEADING EDGE OF THE MEMBRANE SEAM OVERLAPPING EXPOSED SEAM TAPE FROM THE SEAM.
4. CAULK ALL EDGES WITH LAP SEALANT AS SHOWN ABOVE.
5. LOCATE MHE-522 TERMINATION ABOVE ANTICIPATED WATER LEVEL.
6. FOR CORNER APPLICATIONS, SEE DETAILS MHE-514, MHE-515, AND MHE-516.
7. IF A CONTINUATION OF THE DECK MEMBRANE IS TO BE USED AS WALL FLASHING, REFER TO DETAIL MHE-521.

**MULE-HIDE
PRODUCTS CO., INC.
2005**

**Parapet/Curb With
Separate EPDM Membrane
SYSTEMS:
Fully Adhered 90mil System**

**DETAIL NO.:
MHE-520**



NOTES:

1. A 4.5" x 6" (12 x 15 cm) AND A 9" x 12" (23 x 30 cm) PIECE OF UNCURED FLASHING TAPE MUST BE CENTERED OVER THE FIELD SPLICE AT ANGLE CHANGE.
2. CAULK ALL EDGES WITH LAP SEALANT AS SHOWN ABOVE.
3. LOCATE MHE-522 TERMINATION ABOVE ANTICIPATED WATER LEVEL.
4. FOR CORNER APPLICATIONS, SEE DETAILS MHE-514, MHE-515, AND MHE-516.

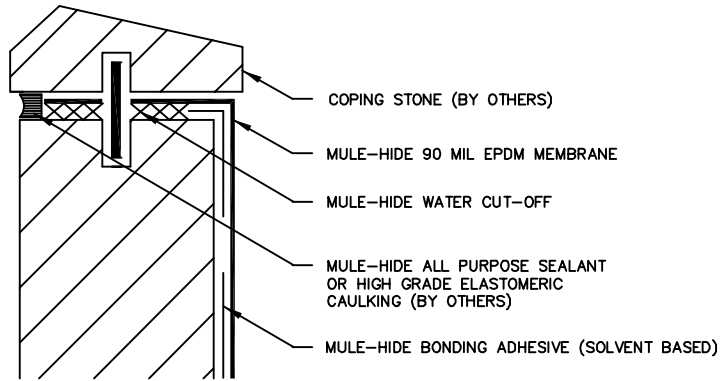
**MULE-HIDE
PRODUCTS CO., INC.
2005**

Wall Flashing With
Continuous EPDM Membrane

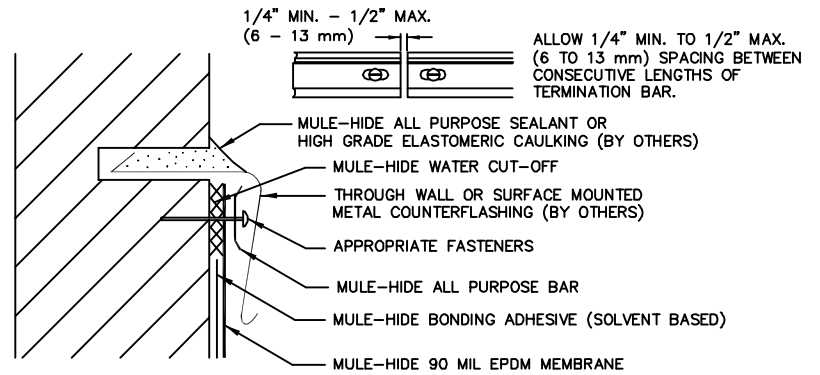
SYSTEMS:
Fully Adhered 90mil System

DETAIL NO.:
MHE-521

(A)



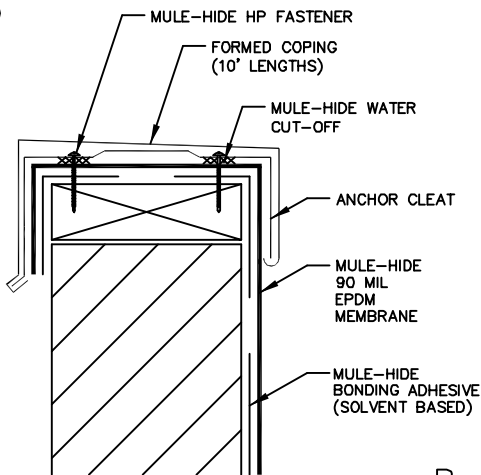
(B)



NOTES:

1. APPLY ON HARD SMOOTH SURFACE ONLY; NOT FOR USE ON WOOD.
2. WATER CUT-OFF MUST BE HELD UNDER CONSTANT COMPRESSION.
3. DO NOT WRAP COMPRESSION TERMINATION AROUND CORNERS.

(C)

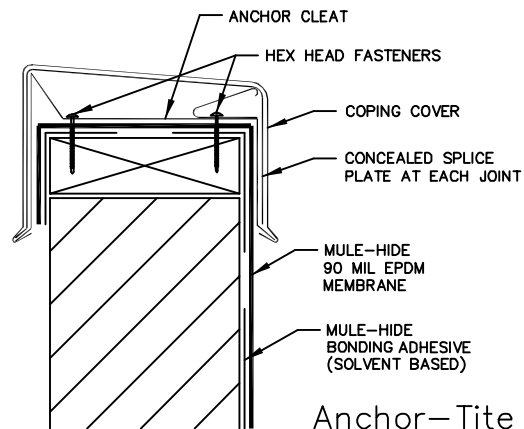


NOTES:

1. WATER CUT-OFF SHALL BE APPLIED AROUND EACH SLOT AND FASTENER HOLE.
2. REFER TO METAL-ERA PERMA-TITE COPING INSTALLATION INSTRUCTION MANUAL FOR STEP-BY-STEP INSTRUCTION PROCEDURES.

Perma-Tite COPING

(D)



NOTE:

REFER TO METAL-ERA ANCHOR-TITE INSTALLATION INSTRUCTION MANUAL FOR STEP-BY-STEP INSTRUCTION PROCEDURES.

Anchor-Tite COPING

**MULE-HIDE
PRODUCTS CO., INC.
2005**

Vertical Flashing Terminations

SYSTEMS:
Fully Adhered 90mil System

DETAIL NO.:
MHE-522