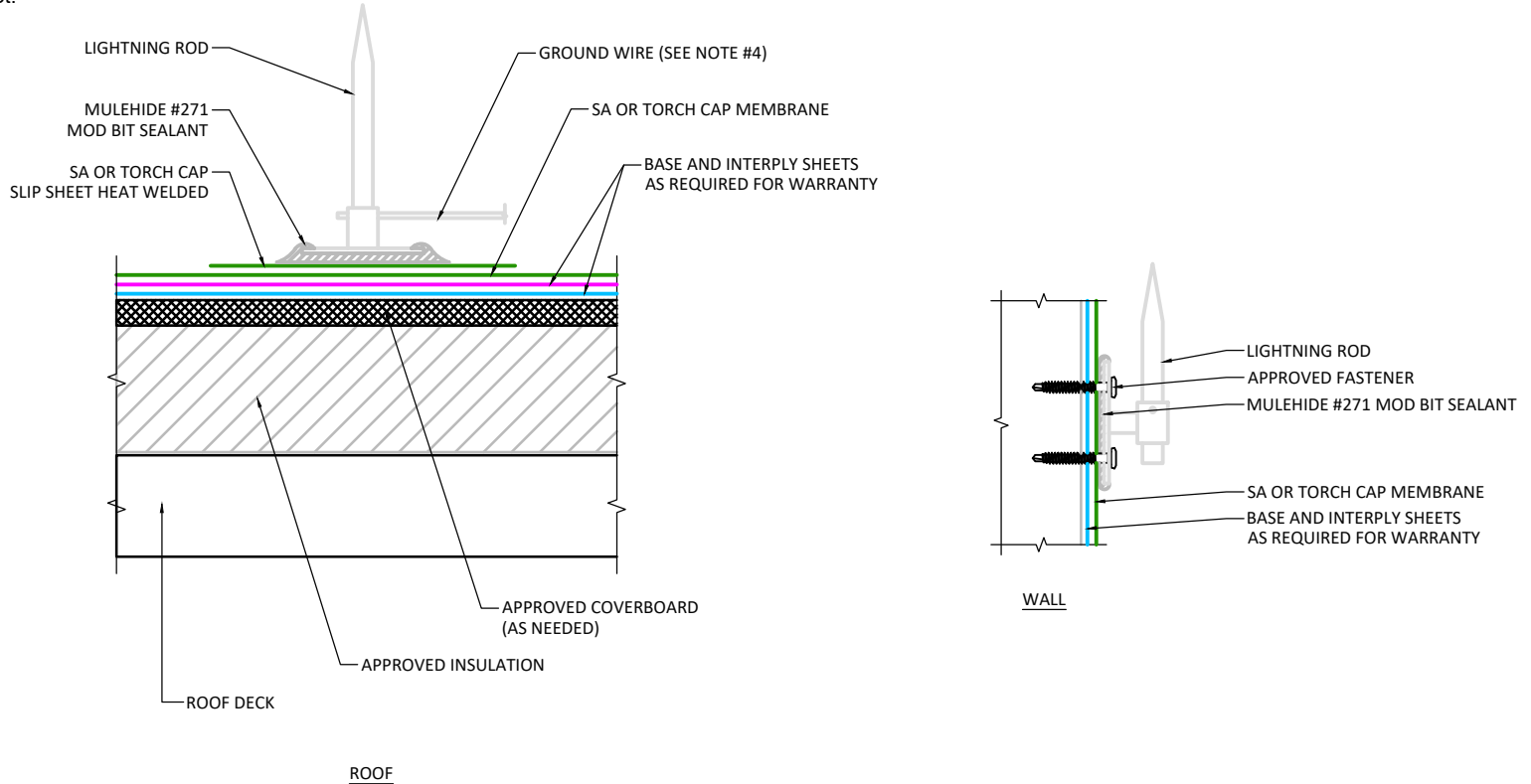


NOTES:

1. Refer to specifications for flashing membrane requirements.
2. Ground wire supports to be flashed in a similar manner.
3. Ground wire must be anchored sufficiently to prevent contact with field or flashing membrane.
4. Install another layer of cap sheet membrane if ground wire must come in contact with field or flashing membrane.
5. Cap sheet must be heated and granules embedded in surface at all laps over granulated surfaces when installing cap sheet.



APPLICABLE SYSTEMS (AND MEMBRANES):
 SELF ADHERED
 TORCH APPLIED

MULEHIDE

LIGHTNING ROD

DETAIL NO.:
MB-MS-A802

MAXIMUM WARRANTY:
 20 YEARS MAX

REVISION DATE: 6/8/2026