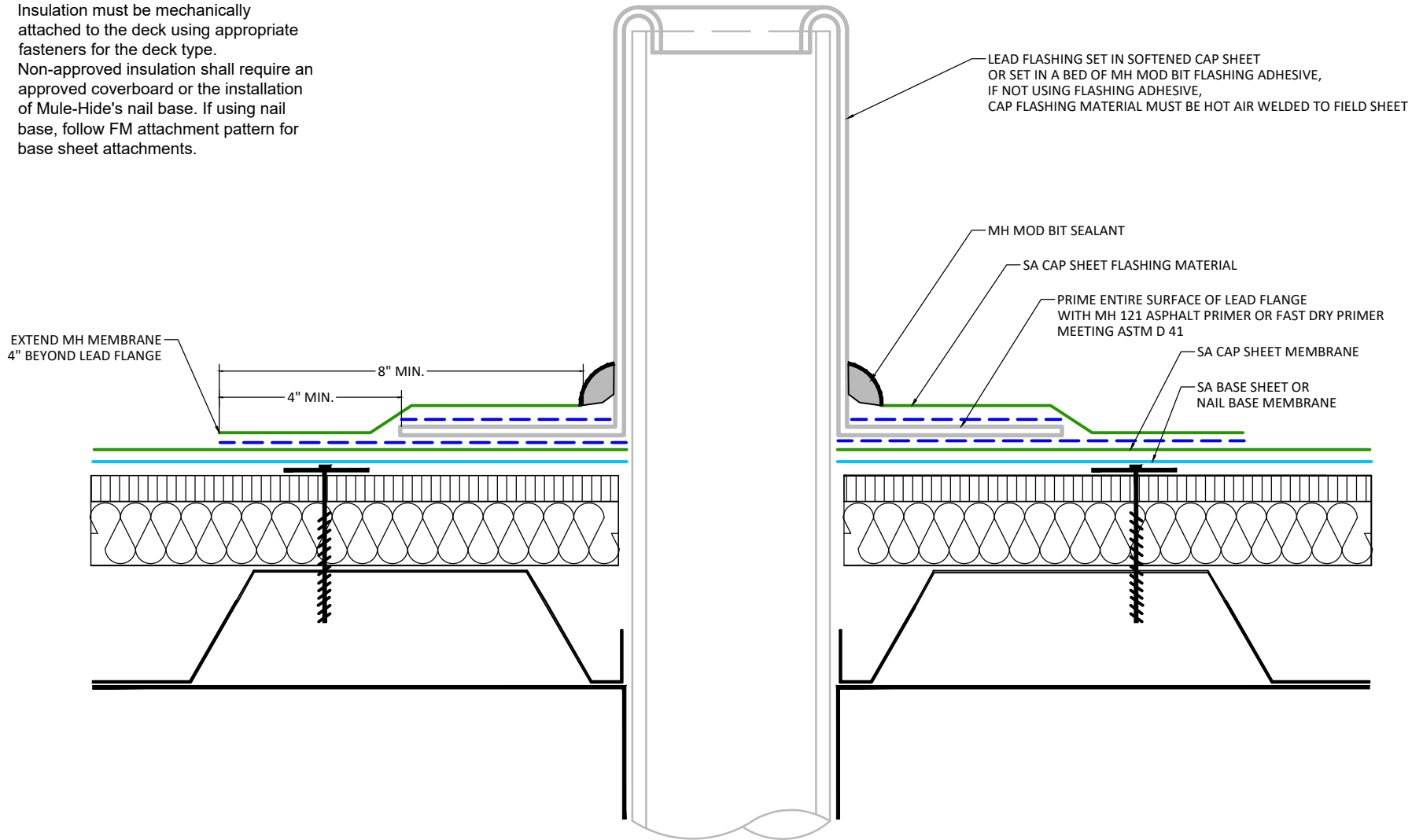


NOTES:

1. Insulation must be mechanically attached to the deck using appropriate fasteners for the deck type. Non-approved insulation shall require an approved coverboard or the installation of Mule-Hide's nail base. If using nail base, follow FM attachment pattern for base sheet attachments.



APPLICABLE SYSTEMS (AND MEMBRANES):
 SELF-ADHERING MOD BIT SYSTEMS

MULEHIDE

PIPE FLASHING OPTION 5

DETAIL NO.:

MB-PP-A311

MAXIMUM WARRANTY:
 20 YEARS MAX

REVISION DATE: 6/8/2026