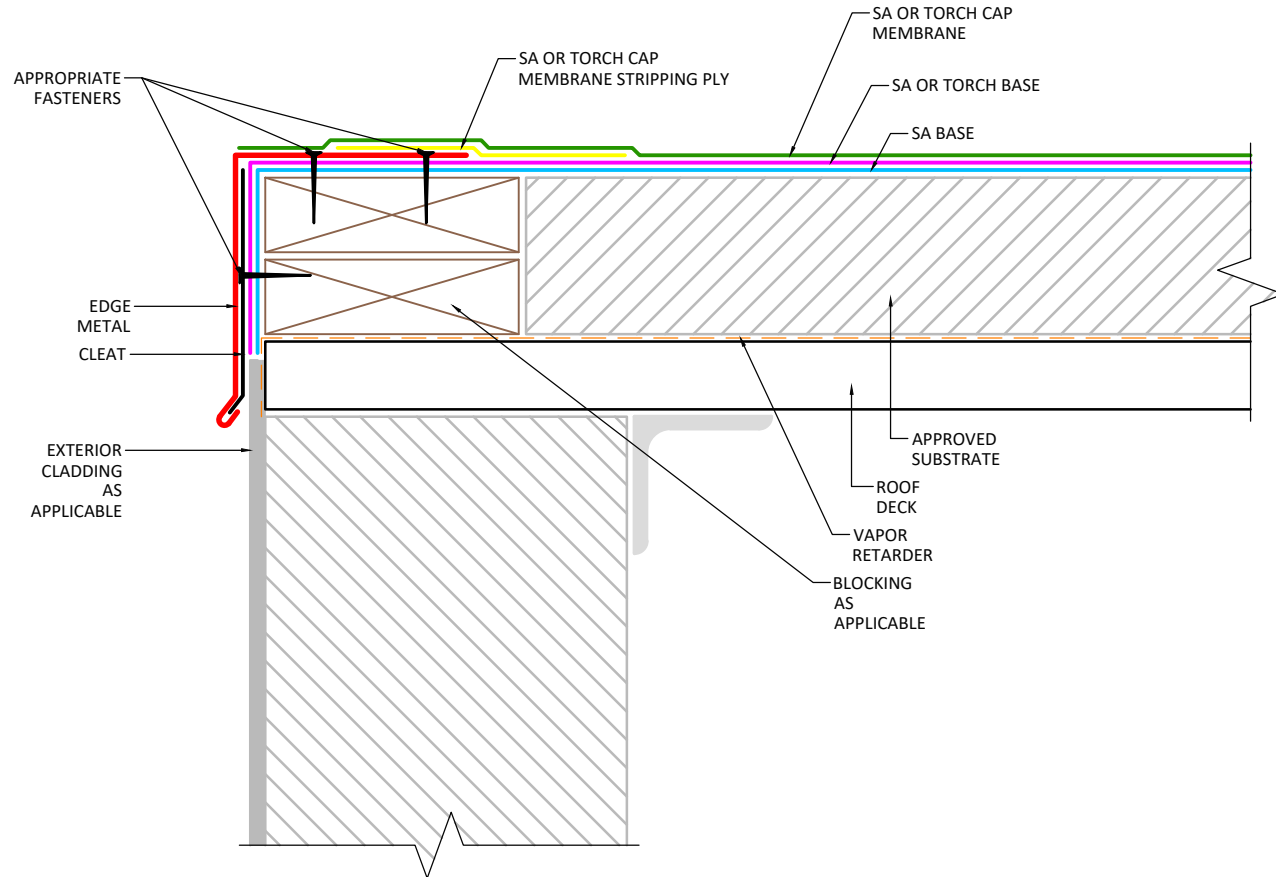


NOTES:

1. Metal Edge Flashing, Wood Blocking, and Attachments shall comply with ANSI/SPRI ES-1
2. Refer to SMACNA recommendations and details regarding meta thickness and cleat requirements. Continuous cleats are recommended at all edges and coping flashings, cleats to be at least one gauge heavier than the edge/coping metal.
3. Wood blocking may be slotted for venting of wet-fill decks or other applicable constructions.
4. For heat fused membrane applications, set metal flashing onto heated softened membrane.
5. Membrane end laps to be a minimum 6" and fully adhered at all membrane to membrane seams.
6. Membrane laps at flanged metal to be 3" minimum and fully bonded to primed metal surface.
7. Use only when roof deck is support by the wall.
8. For Self-Adhered Membranes, in areas prone to freezing conditions, membrane shall be heat welded or sealed with an approved sealant at 90o bend of edge metal.



APPLICABLE SYSTEMS (AND MEMBRANES)
 SELF ADHERED
 TORCH APPLIED

MULEHIDE

EDGE METAL FLASHING 3 PLY

MAXIMUM WARRANTY:
 20 YEARS MAX

DETAIL NO.:
MB-EM-A100

REVISION DATE: 6/8/2026