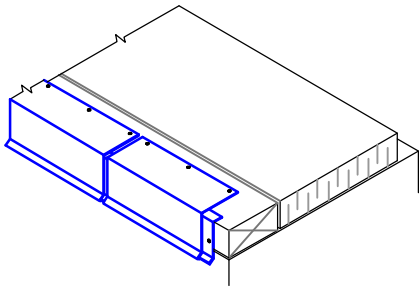


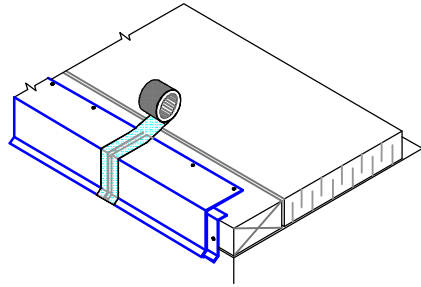
1

1. INSTALL CONTINUOUS CLEAT.
2. INSTALL MEMBRANE COATED METAL WITH ¼" JOINTS BETWEEN ADJOINING SECTIONS.



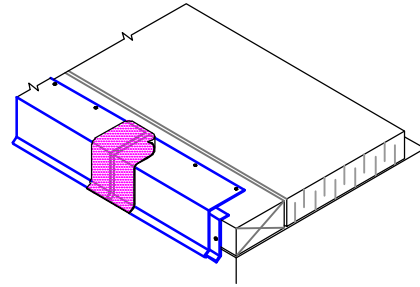
2

- INSTALL 2" WIDE DUCT TAPE OVER JOINTS OF MEMBRANE COATED METAL & COMPLETELY COVER THE JOINT.



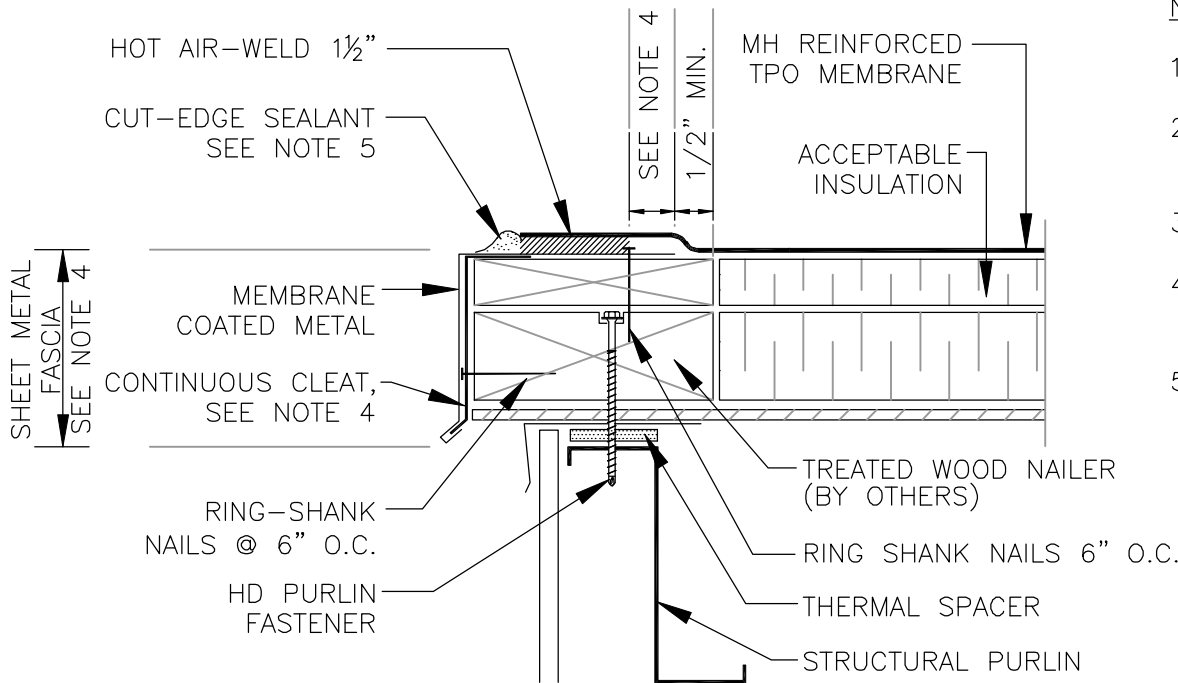
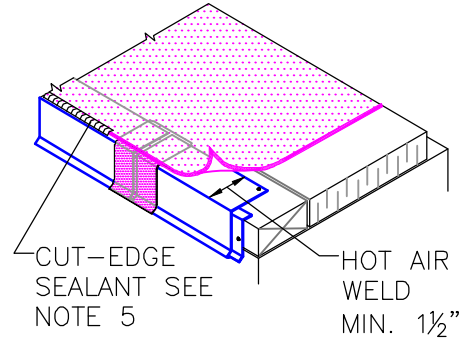
3

- HEAT WELD 6" WIDE PIECE OF MULE-HIDE NON-REINFORCED MEMBRANE OVER THE JOINT.



4

- POSITION MULE-HIDE REINFORCED FIELD MEMBRANE AND HEAT WELD TO MEMBRANE COATED METAL, A MINIMUM OF 1½" AS SHOWN.



NOTES:

1. REFER TO METAL RETROFIT SPECS FOR PROPER WOOD NAILER FASTENING CRITERIA.
2. INSPECT THE STRUCTURAL INTEGRITY OF EXISTING STEEL MEMBER(S) PRIOR TO ANCHORING NEW WOOD BLOCKING.
3. THICKNESS OF WOOD NAILER(S) TO MATCH WITH THE THICKNESS OF INSULATION.
4. SEE DETAIL T3.1 FOR METAL EDGE INSTALLATION AND REQUIREMENTS OF ANSI/SPRI ES-1 COMPLIANCE.
5. APPROXIMATELY 1/8" DIAMETER BEAD OF CUT-EDGE SEALANT IS REQUIRED ON CUT EDGES OF REINFORCED MEMBRANE.

NOTE:
NOT APPROVED FOR 20-YEAR SYSTEM WARRANTIES OR FOR USE IN HIGH WIND AREAS

**MULE-HIDE
PRODUCTS CO., INC.
2011**

**PERIMETER EDGE METAL
MEMBRANE COATED METAL
SYSTEMS:
METAL RETROFIT SYSTEMS
TPO MECHANICALLY ATTACHED**

**DETAIL NO.:
MMRT-101**