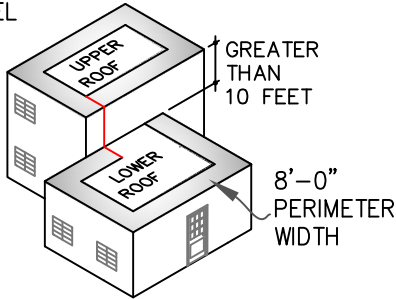
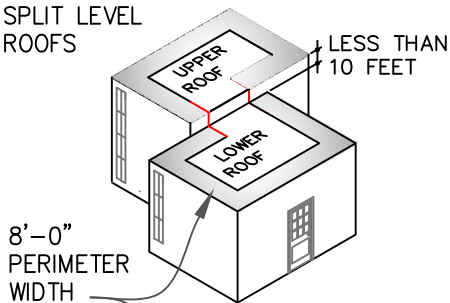


ROOF ZONES FOR MINIMUM ONE FASTENER PER 4 SQUARE FEET

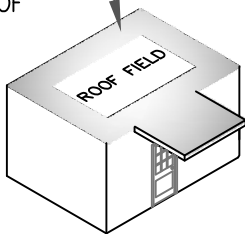
SPLIT LEVEL ROOFS



SPLIT LEVEL ROOFS

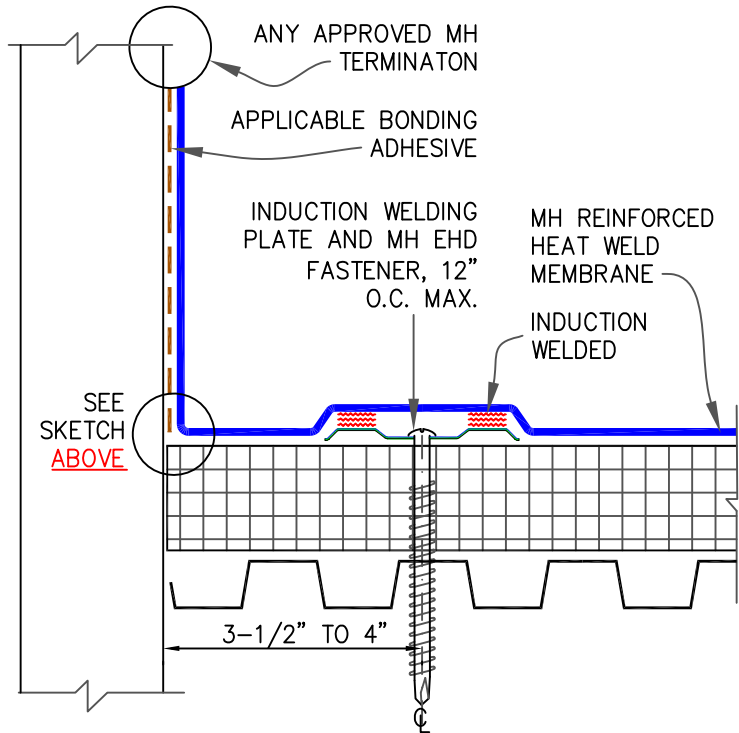
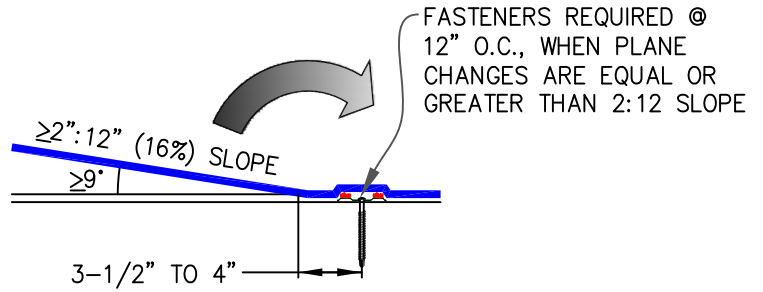
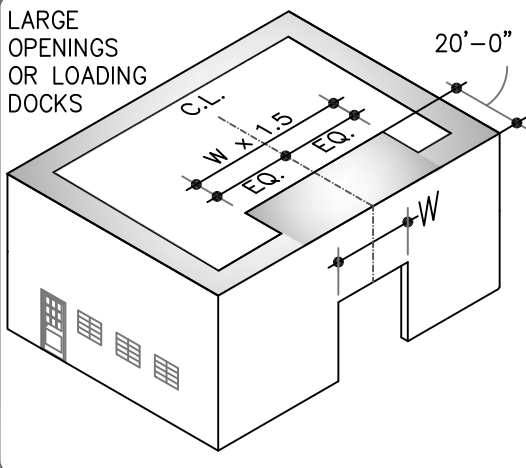


CANOPY ROOF



MAIN ROOF EXTENDING ON THE SAME LEVEL

LARGE OPENINGS OR LOADING DOCKS



ANGLE CHANGE SECUREMENT

NOTES:

1. INDUCTION WELD CARDBOARD DISKS ARE REQUIRED UNDER INDUCTION WELDING PLATES WHEN USING NON-FACED EPS (EXPANDED POLYSTYRENE) OR XPS (EXTRUDED POLYSTYRENE) INSULATIONS.

**MULE-HIDE PRODUCTS**

**INDUCTION WELDING PLATES  
BASE ATTACHMENT**

**SYSTEMS:  
HEAT WELD MEMBRANE  
MECHANICALLY ATTACHED**

DETAIL NO.:

**MHT-IWP2**

REVISION DATE: 05/2020