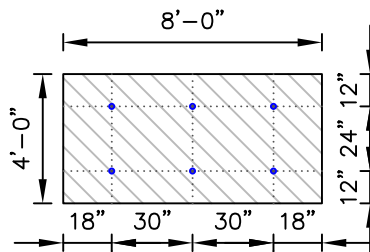


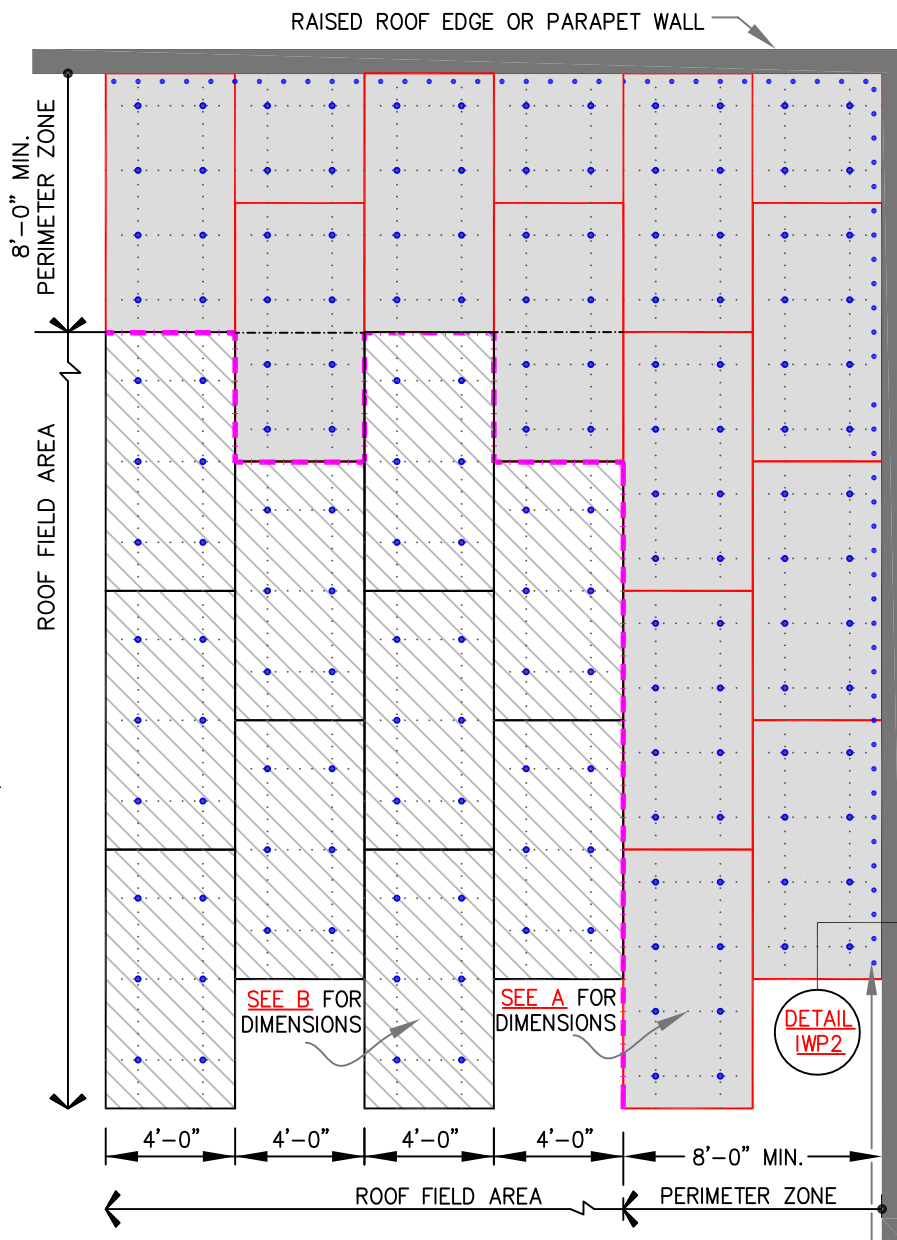
(A) PERIMETER ZONE
8 FASTENERS PER 4'X8' BOARD



(B) FIELD OF ROOF
6 FASTENERS PER 4'X8' BOARD

NOTES:

1. INDUCTION WELD CARDBOARD DISKS ARE REQUIRED UNDER INDUCTION WELDING PLATES WHEN USING NON-FACED EPS (EXPANDED POLYSTYRENE) OR XPS (EXTRUDED POLYSTYRENE) INSULATIONS.
2. PERIMETER ENHANCEMENTS REQUIRED FOR WIND SPEED COVERAGE GREATER THAN 72MPH. CONTACT MULE-HIDE TECHNICAL DEPARTMENT FOR REQUIREMENTS.



MEMBRANE FASTENED MINIMUM 12" O.C. AT ANGLE(S) CHANGES. FOR ADDITIONAL INFORMATION SEE DETAIL [IWP2](#)

- PERIMETER AREA
- FIELD AREA
- MULE-HIDE FASTENER & INDUCTION WELDING PLATE

DECK TYPE	DECK THICKNESS	FASTENER	INDUCTION WELDING PLATE
STEEL	22 GAUGE	MULE-HIDE EHD FASTENER	3-1/8" DIAMETER
PLYWOOD	15/32"		

NOTE: AT IN-FILL MINOR PIECES, USE MIN. 2 FASTENERS.

MULE-HIDE PRODUCTS

INDUCTION WELDING PLATES FASTENING REQUIREMENTS
SYSTEMS:
HEAT WELD MEMBRANE MECHANICALLY ATTACHED

DETAIL NO.:
MHT-IWP1

REVISION DATE: 05/2020