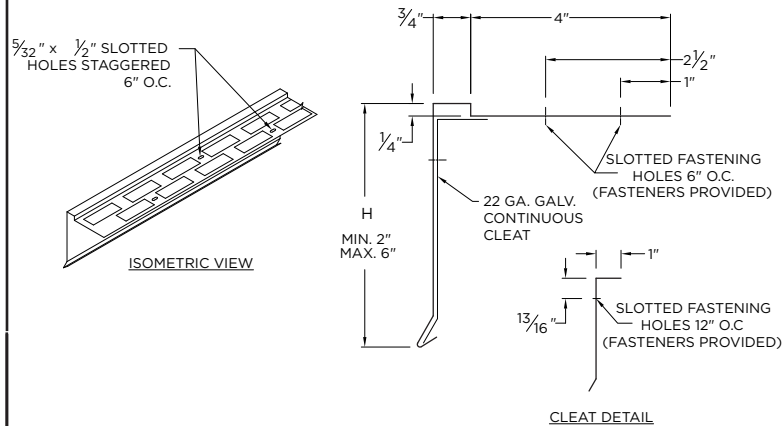




# DRIP EDGE MB

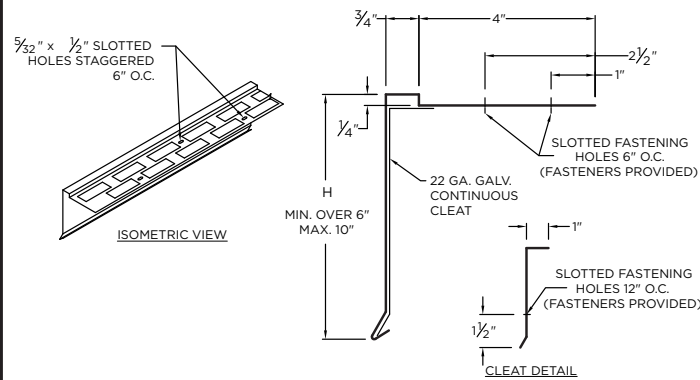
## BUILT-UP OR MODIFIED VERSION

### FACE HEIGHT 6" OR LESS



### FACE HEIGHT OVER 6"

(NO FM OR MIAMI-DADE APPROVAL)



### DIMENSIONS

\_\_\_\_\_ (H) Face Height (inches-Max 10")

### MATERIAL

- ☐ 24 Ga. Galv. Steel  
☐ 22 Ga. Galv. Steel  
☐ .040" Aluminum  
☐ .050" Aluminum  
☐ .063" Aluminum  
☐ OTHER: \_\_\_\_\_

Color: \_\_\_\_\_  
Finish: \_\_\_\_\_

**Substrate:** ☐ Wood  
If substrate is not given, wood fasteners will be provided.  
☐ Masonry  
☐ Metal

### QUANTITIES

\_\_\_\_\_ Lineal Feet (12'-0" Lengths)

\_\_\_\_\_ Outside Miter (90°)

\_\_\_\_\_ Inside Miter (90°)

### Accessory Type:

- ☐ Quicklock (Default)  
☐ Welded (Surcharge)

### NOTES

- Includes concealed splice plates that must be field caulked to prevent water entry
- Unless otherwise noted, fabrication of miters and accessories are provided with a non-penetrating quicklock joint, then factory sealed watertight
- Welded accessories require minimum material thickness of .050"
- For non-90 miters, see separate print approval
- Product should be installed per provided installation instructions
- ANSI/SPRI/FM 4435/ES-1 Test Pressure up to 276 psf
- FM and Miami-Dade Approval (Max 6" Face)

### APPROVALS



**ANSI/SPRI/FM 4435/ES-1**  
Test Pressures listed in notes

### PROJECT INFO

Project Name: \_\_\_\_\_

Architect: \_\_\_\_\_

Roofing Contractor: \_\_\_\_\_

**Project Type:** \_\_\_\_\_

☐ By selecting this box you have verified and confirmed that dimensions, sizes, and quantities are correct. All products will be installed in strict accordance with printed instructions.

Date: \_\_\_\_\_

**MuleHide**  
1195 Prince Hall Drive  
Beloit, WI 53511  
800-786-1492  
www.mulehide.com  
**To submit a quote request, please contact your local TM or email mhquotes@metalera.com.**

SHT #: \_\_\_\_\_ of \_\_\_\_\_

DATE: **04/10/25**

DRN BY: **JJC**

CKD BY: **MM**

DWG #: **52010-42312**

REV: **B**