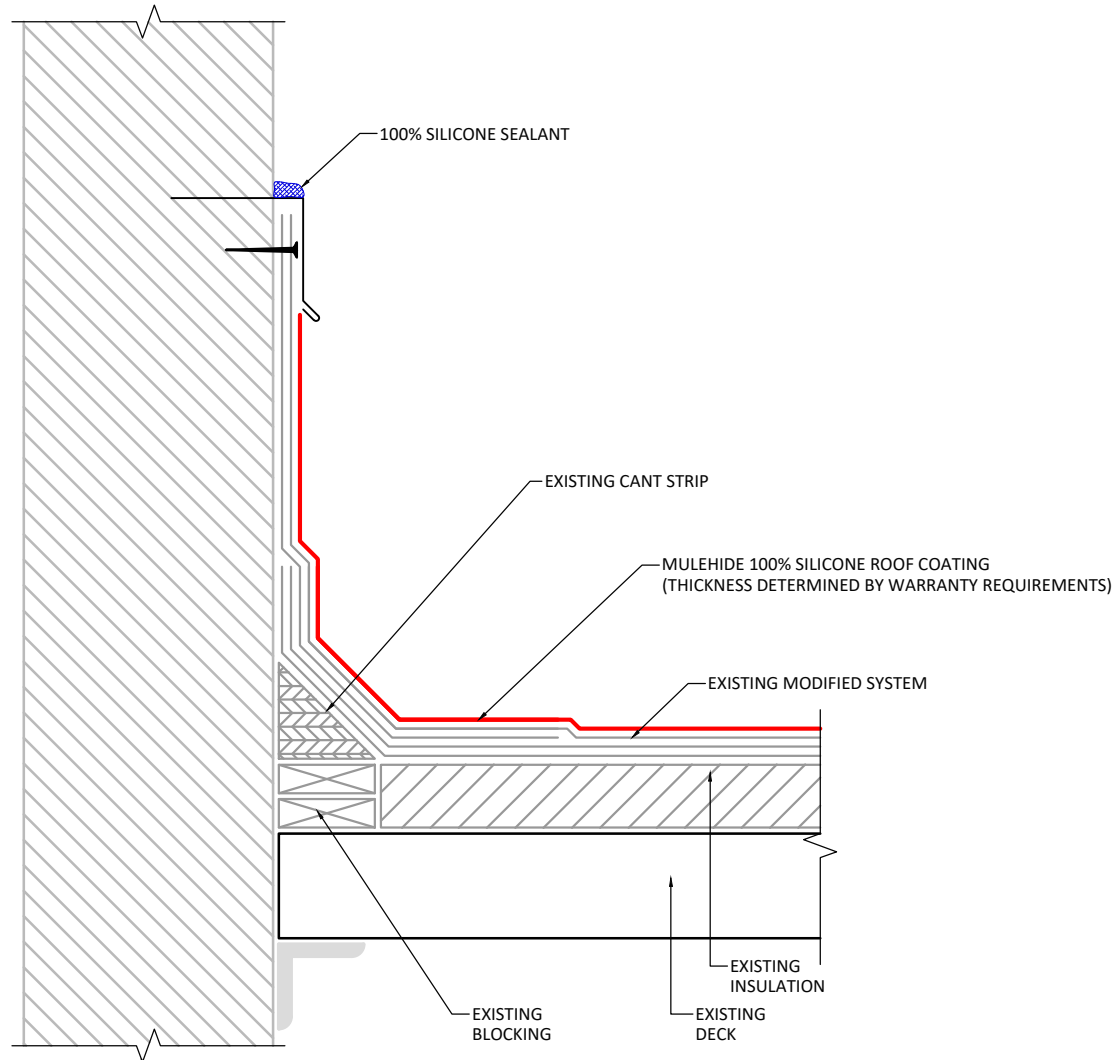


NOTES:

1. INSTALL BLEED BLOCK PRIMER AS REQUIRED



APPLICABLE SYSTEMS (AND MEMBRANES)
EXISTING MODIFIED BITUMEN ASSEMBLY

MULEHIDE

100% SILICONE MODIFIED WALL FLASHING DETAIL

DETAIL NO.:
SI-WF-D200

MAXIMUM WARRANTY:
20 YEARS

REVISION DATE: 3/24/2026