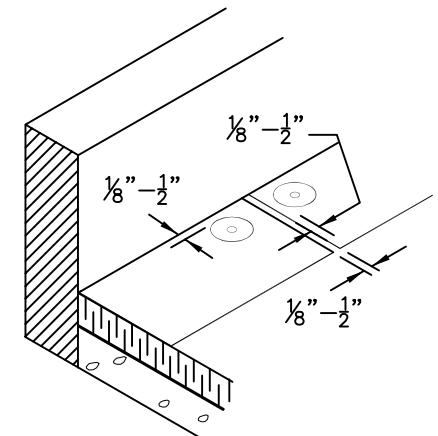
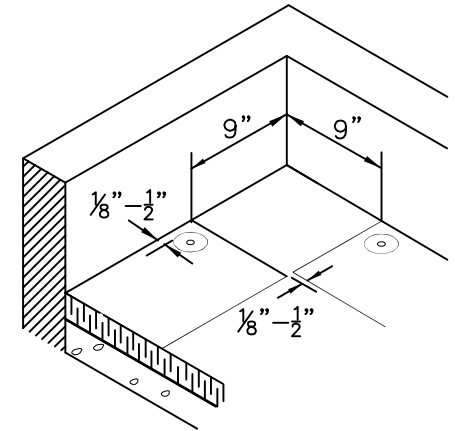
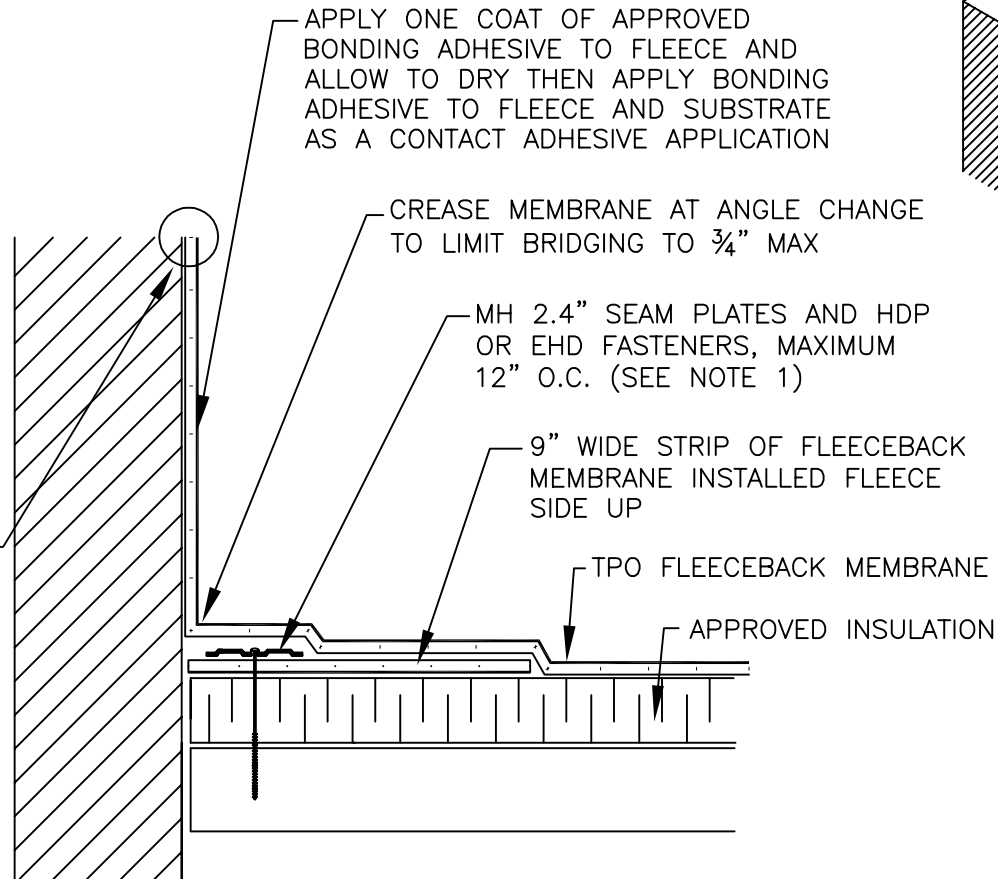


NOTES:

1. CONTACT MULE-HIDE FOR FASTENING CRITERIA AND PROPER FASTENERS FOR EACH DECK TYPE.
2. RUSS PRODUCTS CANNOT BE USED ON FLEECEBACK MEMBRANES.

ANY STANDARD MULE-HIDE TERMINATION AFTER FLEECE HAS BEEN REMOVED FROM BACK OF MEMBRANE AT TOP OF FLASHING



MINIMUM OF 2 BEADS MUST BE APPLIED TO TOP OF 9" FLEECEBACK STRIP TO ENSURE PROPER ADHESION OF FIELD MEMBRANE

**MULE-HIDE
PRODUCTS CO., INC.**

**BASE ATTACHMENT
USING INVERTED 9" FLEECE BACK
SYSTEMS:
TPO FLEECE BACK
SYSTEMS ONLY**

DETAIL NO.:
MHT-FA-305E

REVISION DATE: 05/2016