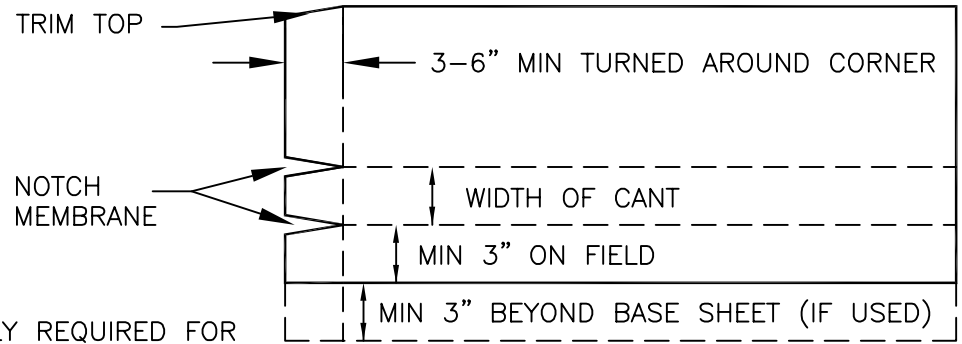
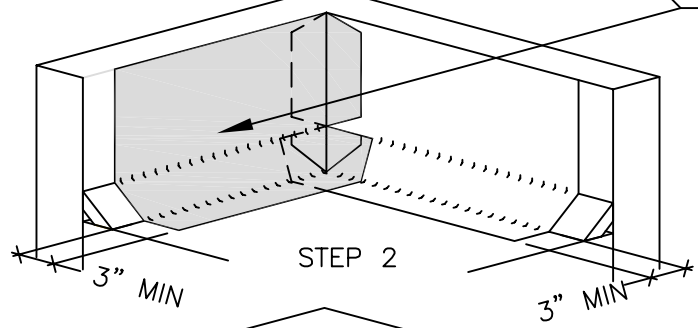


STEP 1



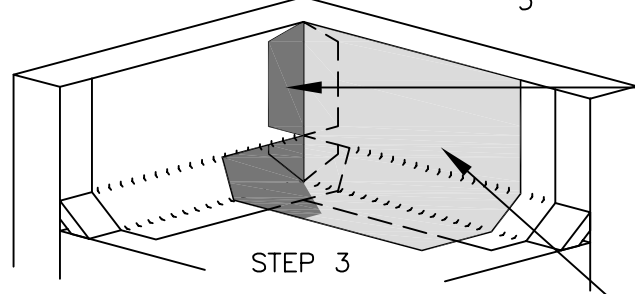
SHEET LAYOUT

- NOTES:
1. REFER TO SPECIFICATIONS FOR FLASHING MEMBRANE REQUIREMENTS.
  2. CUT MEMBRANE AND WRAP CORNERS AS SHOWN.



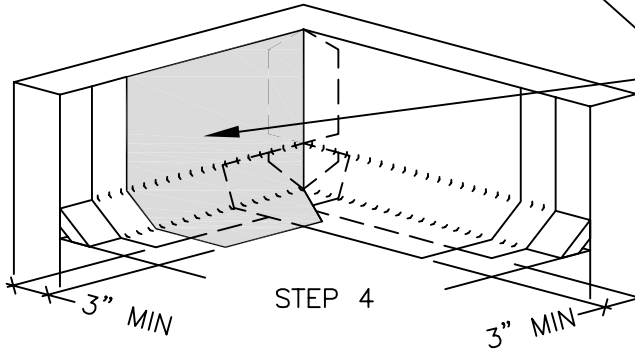
STEP 2

INTERPLY REQUIRED FOR 15 & 20 YEAR SYSTEMS



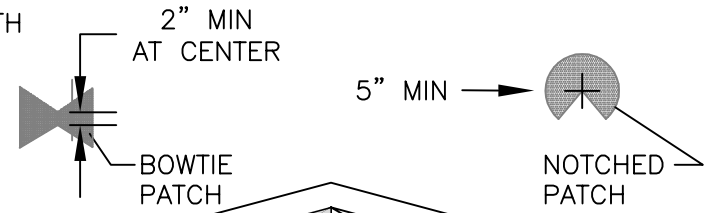
STEP 3

HEAT SURFACE OF MEMBRANE AND EMBED GRANULES INTO THE SHEET TO CREATE SMOOTH SURFACE FOR OVERLAPPING SHEET

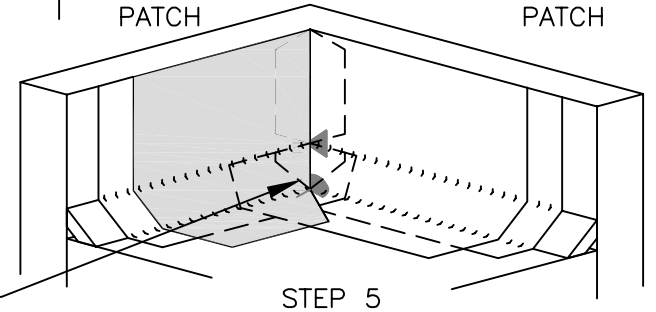


STEP 4

APP MODIFIED BITUMEN GRANULE SURFACED CAP SHEET



INSTALL CORNER PATCHES AT ALL ANGLE CHANGES



STEP 5

**MULE-HIDE PRODUCTS CO., INC.**

**INSIDE CORNER ISOMETRIC SYSTEMS:**

**APP MODIFIED BITUMEN**

**DETAIL NO.: MHMB-UN-CR02T**

REVISION DATE: MARCH 2015