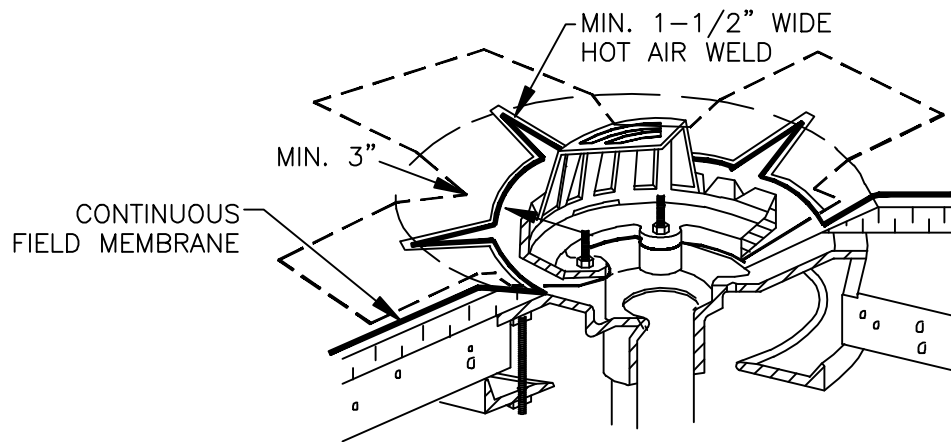
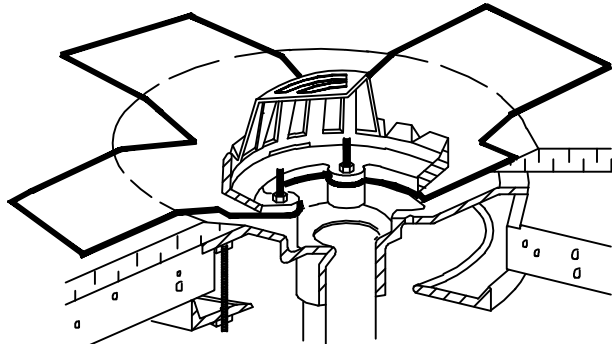
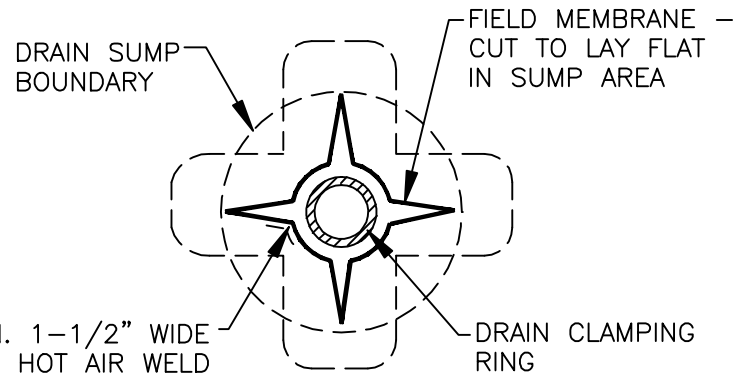
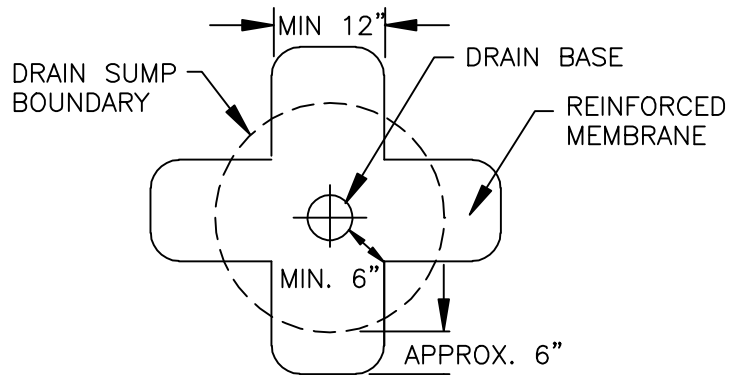


1. DETAILS TO BE USED IN CONJUNCTION WITH STANDARD GUIDE SPECIFICATIONS CONTAINING REQUIREMENTS FOR NAILERS, INSULATION, SLIPSHEETS, ETC.

2. PVC EDGE SEALANT IS REQUIRED ON ALL CUT OR NON-ENCAPSULATED EDGES OF REINFORCED MEMBRANE. THIS INCLUDES FACTORY CUT MEMBRANE.



CUT SECTION OF REINFORCED MEMBRANE AS SHOWN AND POSITION INTO DRAIN SUMP. EXTEND MEMBRANE OUT OF DRAIN SUMP APPROXIMATELY 6" AND ROUND CORNERS.

EXTEND FIELD MEMBRANE ONTO MEMBRANE SECTION POSITIONED AT DRAIN SUMP AND CUT AS SHOWN TO LAY FLAT IN SUMP. HOT AIR WELD A MINIMUM OF 1-1/2" COMPLETELY SURROUNDING AREA.

**MULE-HIDE
PRODUCTS CO., INC.
04/01/2007**

**ROOF DRAIN FOR DRAIN SUMPS
SLOPED MORE THAN 3" PER FOOT
SYSTEMS:
ALL PVC**

**DETAIL NO:
MHP-132
PAGE 2 OF 2**