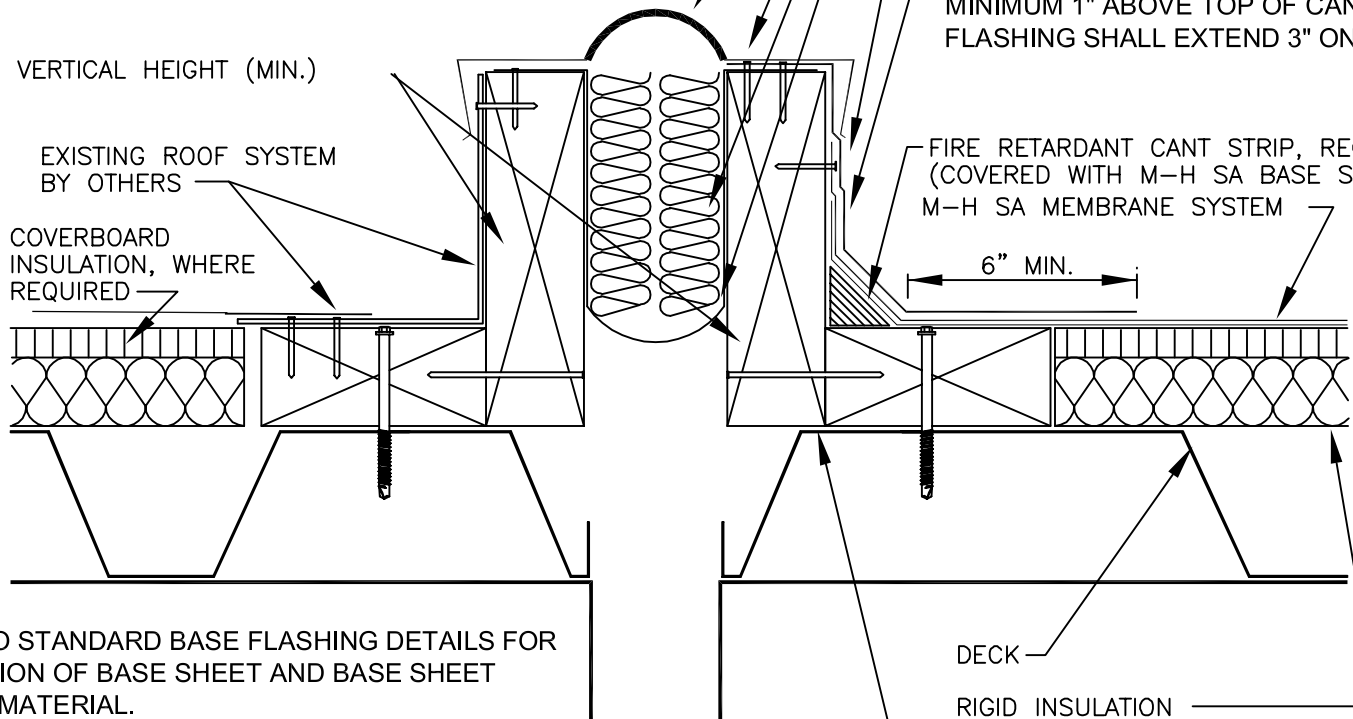


CURB 8" VERTICAL HEIGHT (MIN.)

EXISTING ROOF SYSTEM  
BY OTHERS

COVERBOARD  
INSULATION, WHERE  
REQUIRED



FLEXIBLE EXPANSION JOINT COVER (BY OTHERS).  
FASTENERS 4" O.C. STAGGERED 1"  
BATT INSULATION FILL (BY OTHERS).  
VAPOR RETARDER (BY OTHERS)  
MULE-HIDE SA CAP SHEET FLASHING MATERIAL  
M-H SA CAP SHEET TURNED UP ABOVE TOP OF  
CANT MINIMUM 2" AND SECURED WITH FASTENERS  
SPACED 8" O.C.  
M-H SA BASE SHEET /SHEETS INSTALLED A  
MINIMUM 1" ABOVE TOP OF CANT. BASE SHEET  
FLASHING SHALL EXTEND 3" ONTO FIELD OF ROOF.\*

FIRE RETARDANT CANT STRIP, REQ.  
(COVERED WITH M-H SA BASE SHEET)  
M-H SA MEMBRANE SYSTEM

6" MIN.

\* REFER TO STANDARD BASE FLASHING DETAILS FOR  
INSTALLATION OF BASE SHEET AND BASE SHEET  
FLASHING MATERIAL.

DECK

RIGID INSULATION  
(OR APPROVED SUBSTRATE)

TREATED WOOD NAILER,  
ANCHORED TO DECK

**MULE-HIDE**  
**PRODUCTS CO.,INC.**  
**2003**

**EXPANSION JOINT - OPTION 1**

**SELF-ADHERING MOD BIT SYSTEMS**

**DETAIL NO.:**  
**MH-MB-EJ1**