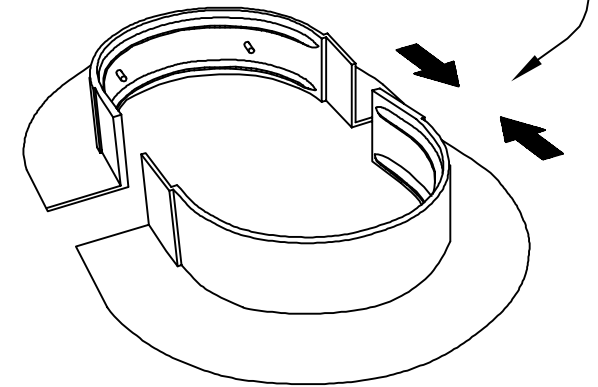


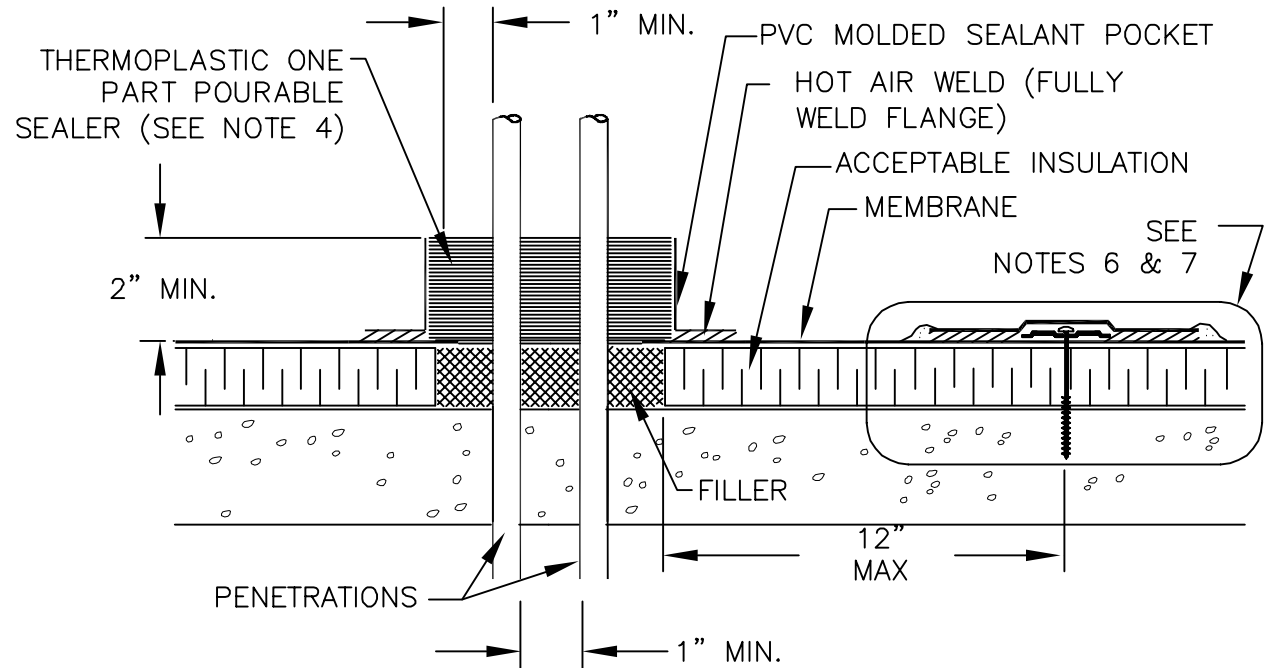
NOTES:

1. DETAILS TO BE USED IN CONJUNCTION WITH STANDARD GUIDE SPECIFICATIONS CONTAINING REQUIREMENTS FOR NAILERS, INSULATION, SLIPSHEETS, ETC.
2. PVC EDGE SEALANT IS REQUIRED ON ALL CUT OR NON-ENCAPSULATED EDGES OF REINFORCED MEMBRANE. THIS INCLUDES FACTORY CUT MEMBRANE.
3. TEMPERATURE OF PIPE MUST NOT EXCEED 180° F.
4. FILL POCKET COMPLETELY WITH THERMOPLASTIC ONE PART POURABLE SEALER UNTIL RIM IS COVERED WITH SEALANT; ENSURE ALL VOIDS ARE FILLED.
5. SEALANT POCKET TO BE MINIMUM 1" FROM PENETRATION ON ANY SIDE.
6. ON MECHANICALLY-FASTENED SYSTEMS, INSTALL A MINIMUM OF 4 2.4" SEAM PLATES AROUND SEALANT POCKETS. FASTENERS/PLATES ARE NOT REQUIRED ON ADHERED SYSTEMS.
7. REFER TO MULE-HIDE UPLIFT RATINGS FOR APPROPRIATE FASTENER SIZE, AND SPACING.

PLACE PVC MOLDED SEALANT POCKET AROUND PENETRATION AND OVERLAP THE TWO SECTIONS.



REFER TO TECHNICAL DATA BULLETIN (TDB) FOR STEP-BY-STEP INSTALLATION PROCEDURES



**MULE-HIDE
PRODUCTS CO., INC.
2010**

**MOLDED SEALANT POCKET
SYSTEMS:
ALL PVC**

**DETAIL NO:
MHP-143**