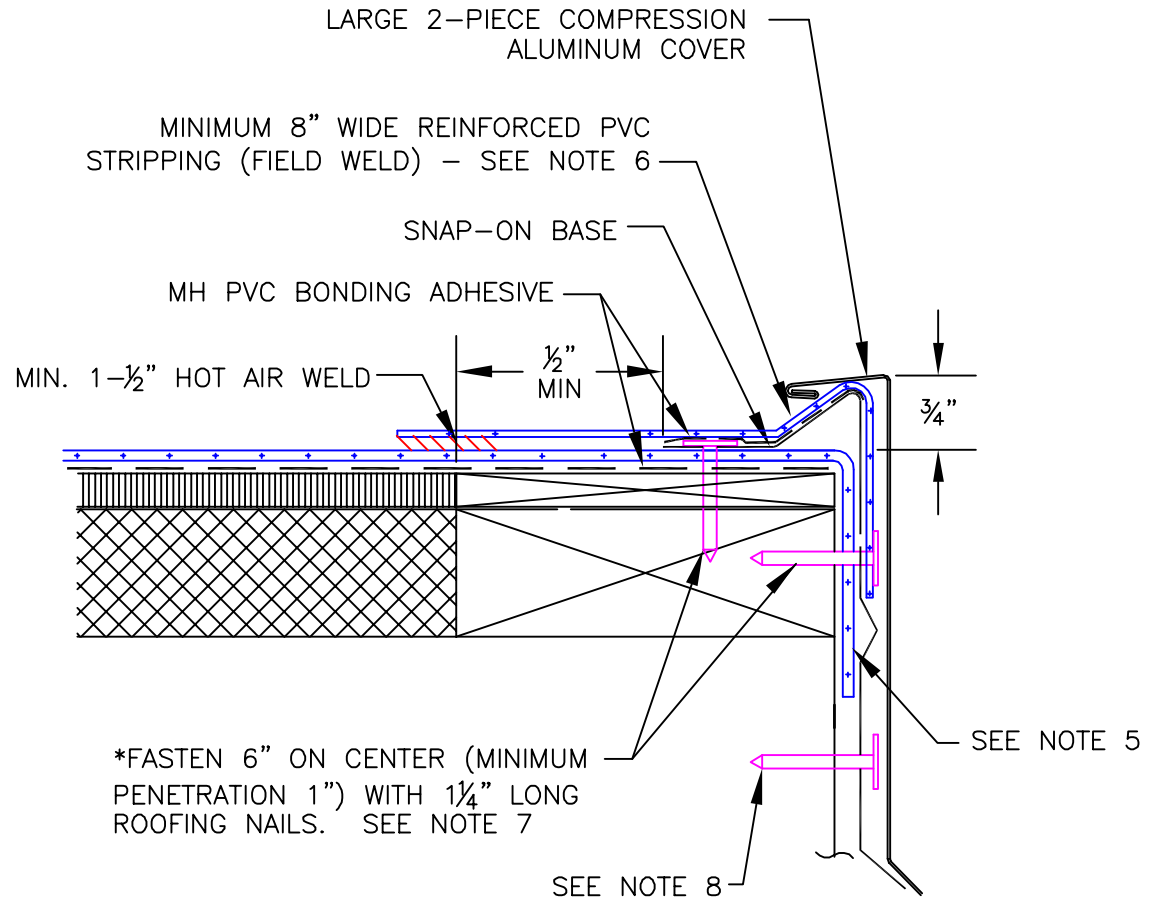


NOTES:

1. THE USE OF THIS DETAIL IS NOT TO EXCEED A 2" PER 12" SLOPE.
2. A WOOD NAILER IS REQUIRED. TOP OF WOOD NAILER IS TO BE FLUSH WITH TOP OF INSULATION. BE SURE THAT THE WOOD NAILER EXTENDS AT LEAST ½" BEYOND THE HORIZONTAL EDGE OF THE SNAP-ON BASE.
3. THE FASTENERS USED TO ATTACH THE BASE TO WOOD NAILERS, AND THE MEMBRANE TO THE FACE OF THE NAILERS, MUST BE SPACED NO GREATER THAN 6" ON CENTER.
4. ALLOW FOR ⅛" EXPANSION GAP BETWEEN 10' LENGTHS OF SNAP-ON BASE. OVERLAP THE SNAP-ON COVERS 2" BETWEEN 10' LENGTHS.
5. MEMBRANE SHOULD EXTEND BEYOND WOOD NAILER BY MINIMUM 1"
6. MAXIMUM MEMBRANE STRIPPING THICKNESS ON THIS DETAIL IS:
 - PVC - 50 MIL
7. USE STAINLESS STEEL FASTENERS WHEN ATTACHING INTO ACQ TREATED WOOD.
8. THE ADDITIONAL FASTENERS MUST BE WITHIN 1-¾" OF THE BOTTOM EDGE.

NOTE:

THIS DETAIL QUALIFIES TO BE INCLUDED IN ANY MULE-HIDE LABOR AND MATERIAL WARRANTY



**MULE-HIDE
PRODUCTS CO., INC.**

**MULE-HIDE PREMANUFACTURED
2-PIECE COMPRESSION LARGE EDGE DETAIL
SYSTEMS:
ALL PVC SYSTEMS**

DETAIL NO.:
MHP-3115

REVISION DATE: 01/2013