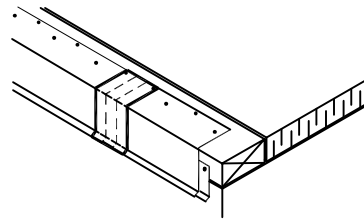
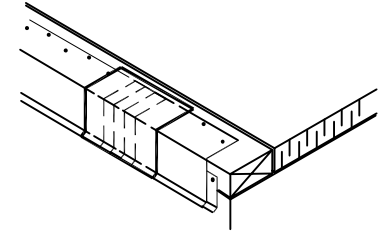


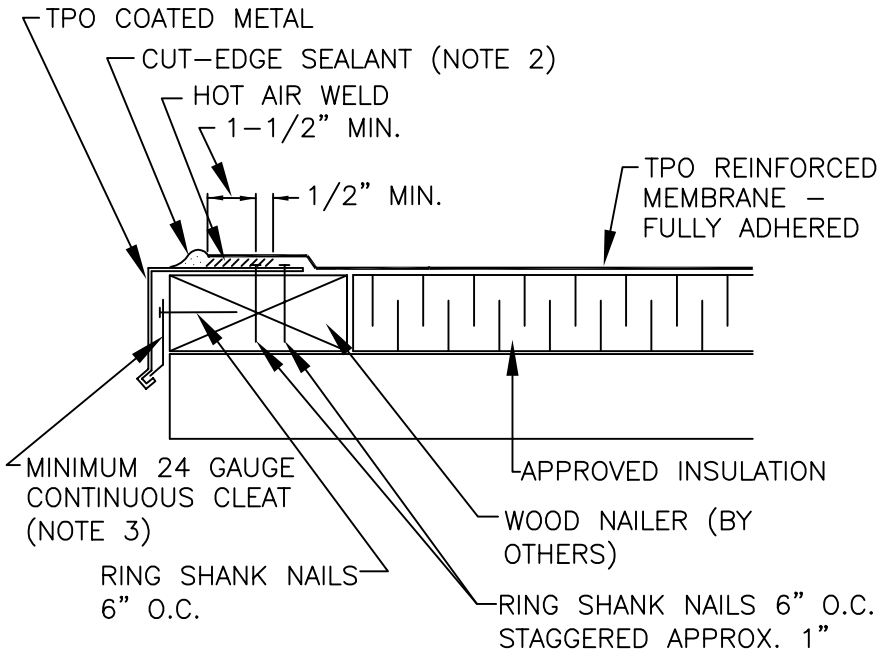
1. INSTALL TPO COATED METAL WITH $\frac{1}{8}$ " - $\frac{1}{4}$ " JOINTS BETWEEN ADJOINING SECTIONS.



2. INSTALL 2" WIDE DUCT TAPE OVER JOINTS IN TPO COATED METAL.

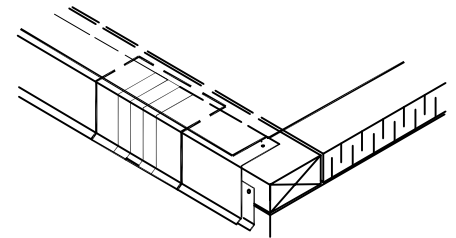


3. HEAT WELD 6" WIDE PIECE OF TPO NON-REINFORCED FLASHING OVER JOINT.



NOTES:

1. FASTENERS USED TO ATTACH TPO COATED METAL MUST PENETRATE WOOD NAILERS A MINIMUM OF $1-\frac{1}{4}$ ". IF $\frac{1}{2}$ " PLYWOOD IS USED AS THE TOP NAILER, FASTENERS MUST PENETRATE A MINIMUM OF $1-\frac{1}{4}$ " INTO NAILER BELOW.
2. APPROXIMATELY $\frac{1}{8}$ " DIAMETER BEAD OF CUT-EDGE SEALANT IS REQUIRED ON CUT EDGES OF TPO REINFORCED MEMBRANE.
3. GAUGE OF CONTINUOUS CLEAT IS DEPENDENT ON THE FASCIA HEIGHT AS SHOWN IN THE CHART BELOW.



4. POSITION TPO REINFORCED MEMBRANE AND HEAT WELD TO TPO COATED METAL A MINIMUM OF $1-\frac{1}{2}$ " AS SHOWN TO LEFT.

NOTE:

THIS DETAIL IS ACCEPTABLE FOR USE IN A 20-YEAR WARRANTED SYSTEM

IF SHEETMETAL IS TO BE INCLUDED IN THE WARRANTY, CONTRACTOR MUST USE MULE-HIDE METAL PRODUCTS. REFER TO DETAILS MHT-3120, MHE-3120, MHT-3550, OR MHT-3555

MAX. FASCIA HEIGHT	GAUGE OF CONT. CLEAT
4"	24 GAUGE
6"	22 GAUGE
8"	20 GAUGE

MULE-HIDE PRODUCTS CO., INC.

**DRIP EDGE TPO COATED METAL SYSTEMS:
FULLY ADHERED**

**DETAIL NO.:
MHT-FA-106A**

REVISION DATE: 10/2013