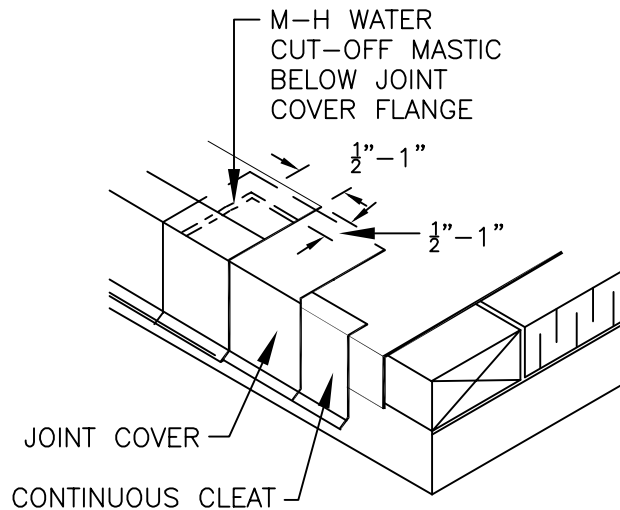
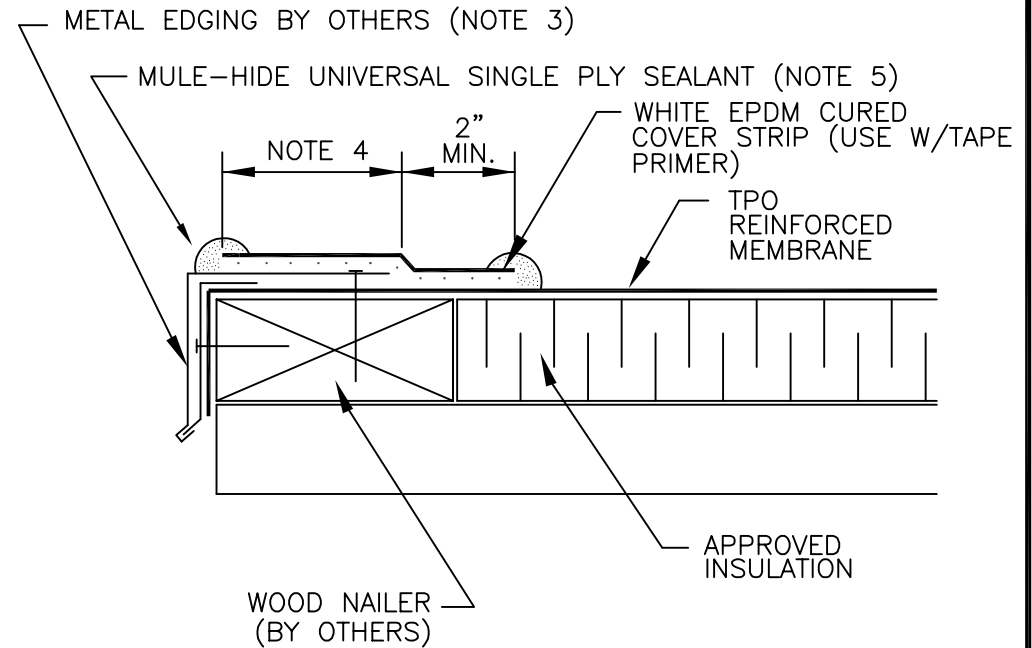


NOTES:

1. CLEAN THE EXISTING MEMBRANE (AND METAL IF APPLICABLE) WITH WEATHERED MEMBRANE CLEANER. PRIME THE MEMBRANE USING TAPE PRIMER. ONCE THE PRIMER IS PROPERLY DRIED, THE WHITE EPDM CURED COVER STRIP IS APPLIED AND ROLLED USING A 2" WIDE ROLLER.
2. WOOD NAILER MUST EXTEND PAST TOTAL WIDTH OF METAL FASCIA DECK FLANGE.
3. FASTENERS AND FASTENER PATTERN AS RECOMMENDED BY METAL EDGE MANUFACTURER.
4. DECK FLANGE MUST BE TOTALLY COVERED BY WHITE EPDM CURED COVER STRIP WITH MINIMUM 2" COVERAGE PAST NAIL HEADS.
5. APPLY MULE-HIDE UNIVERSAL SINGLE PLY SEALANT ALONG BOTH EDGES OF WHITE EPDM CURED COVER TAPE AND ACROSS END LAPS.



NOTE:

THIS DETAIL IS ACCEPTABLE FOR USE IN A 20-YEAR WARRANTED SYSTEM

IF SHEETMETAL IS TO BE INCLUDED IN THE WARRANTY, CONTRACTOR MUST USE MULE-HIDE METAL PRODUCTS. REFER TO DETAILS MHT-3120, MHE-3120, MHT-3550, OR MHT-3555

**MULE-HIDE  
PRODUCTS CO., INC.**

**DRIP EDGE  
WHITE EPDM CURED COVER TAPE  
SYSTEMS:**

**ALL TPO SYSTEMS**

**DETAIL NO.:**

**MHT-UN-106C**

REVISION DATE: 10/2013