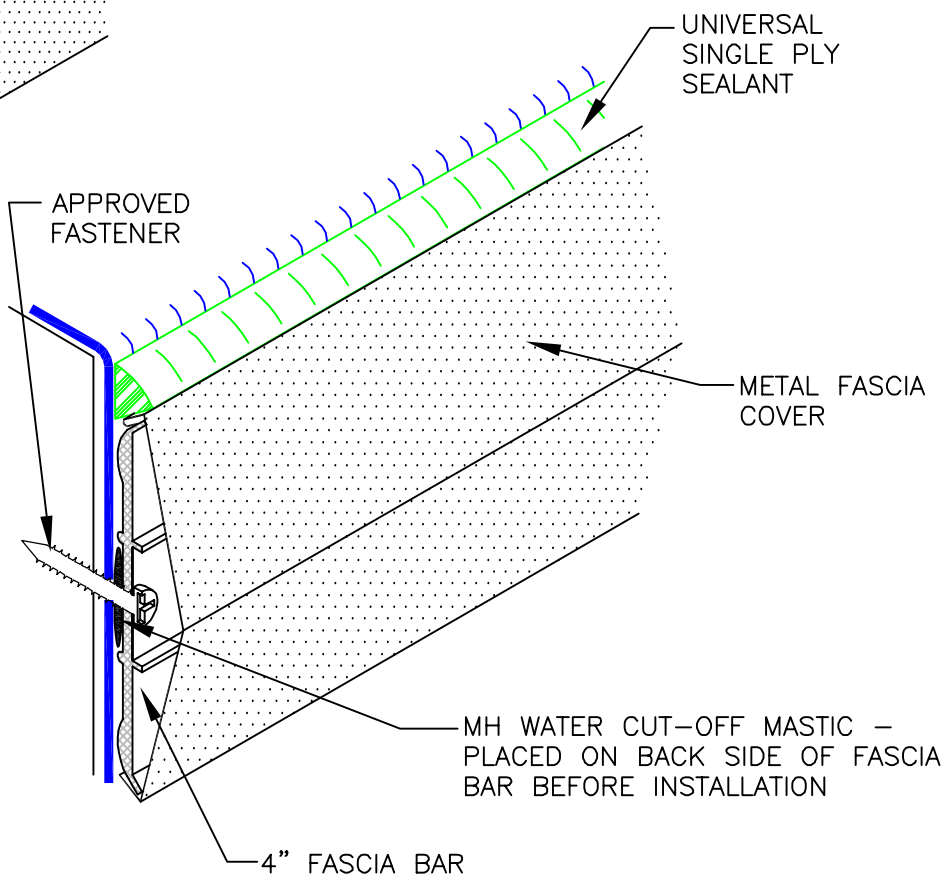


NOTE:
THIS DETAIL QUALIFIES TO BE
INCLUDED IN ANY MULE-HIDE LABOR
AND MATERIAL WARRANTY



- NOTES:
1. JOINTS ON THE FASCIA BAR MUST BE OFFSET BY A MINIMUM OF 12" FROM THE JOINTS IN THE FASCIA COVER.
 2. THE FASCIA BAR MUST BE FASTENED 6" ON CENTER
 3. USE STAINLESS STEEL FASTENERS WHEN ATTACHING INTO ACQ TREATED WOOD.

**MULE-HIDE
PRODUCTS CO., INC.**

**MULE-HIDE PREMANUFACTURED
4" METAL FASCIA SYSTEM
SYSTEMS:
ALL SYSTEMS**

DETAIL NO.:
MHSM-3510
REVISION DATE: 01/2013