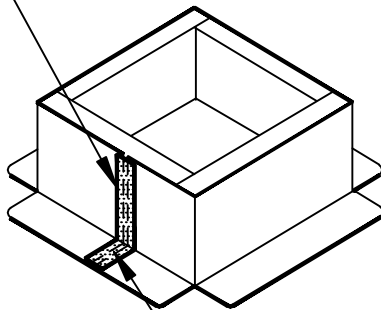


NOTE:

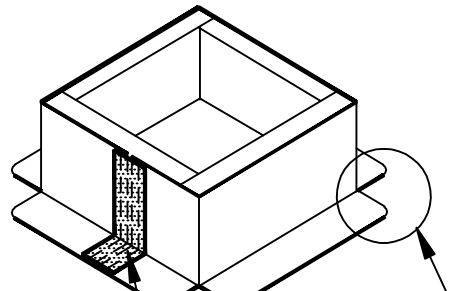
1. DETAILS TO BE USED IN CONJUNCTION WITH STANDARD GUIDE SPECIFICATIONS CONTAINING REQUIREMENTS FOR NAILERS, INSULATION, SLIPSHEETS, ETC.
2. PVC EDGE SEALANT IS REQUIRED ON ALL CUT OR NON-ENCAPSULATED EDGES OF REINFORCED MEMBRANE. THIS INCLUDES FACTORY CUT MEMBRANE.
3. PVC COATED METAL FLASHING FASTENED APPROXIMATELY 12" ON CENTER UNDER COUNTERFLASHING. IF FASTENER PENETRATES METAL COUNTERFLASHING, USE NEOPRENE WASHER OR APPLY WATER CUT-OFF MASTIC UNDER COUNTERFLASHING OR CAULK FASTENER HEAD.
4. DUCT TAPE MAY BE SUBSTITUTED FOR FOIL TAPE.

INSTALL 2" WIDE FOIL TAPE OR DUCT TAPE OVER JOINT IN MULE-HIDE PVC COATED METAL



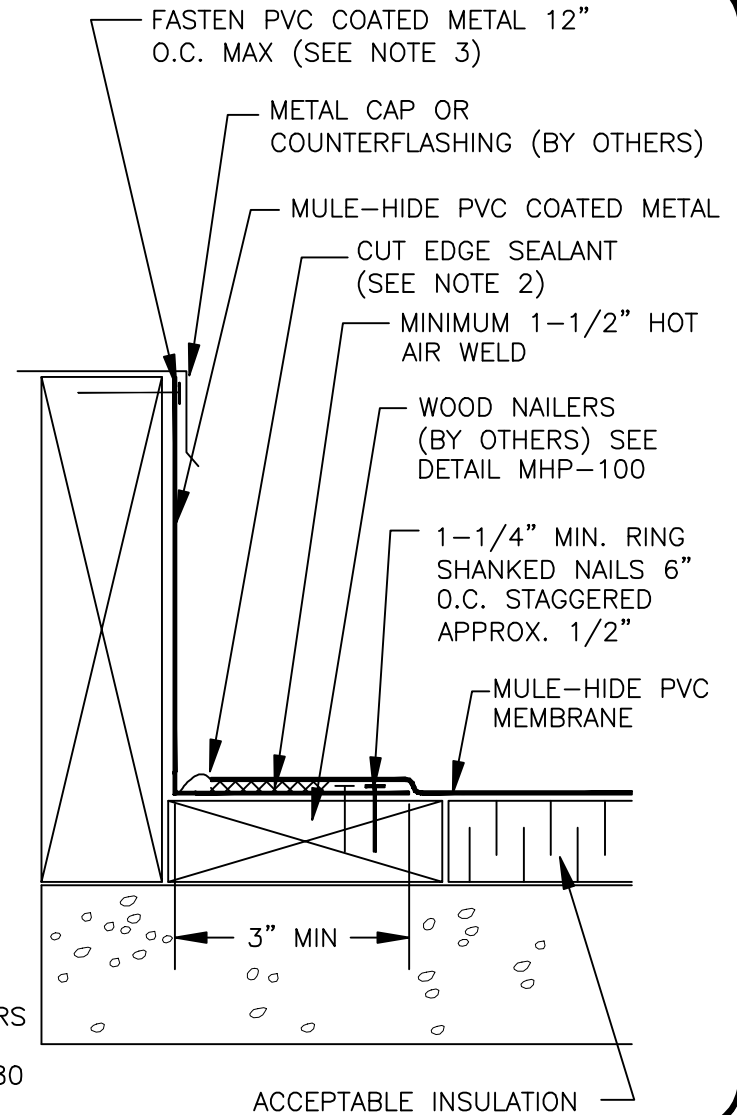
ALLOW 1/4" GAP IN MULE-HIDE PVC COATED METAL

HEAT WELD 6" PIECE OF PVC MEMBRANE OVER JOINT



ROUND CORNERS OF PVC COATED METAL

INSTALL PVC UNIVERSAL OUTSIDE CORNERS PER MULE-HIDE DETAILS MHP-180 OR MHP-181



**MULE-HIDE
PRODUCTS CO., INC.
04/01/2007**

**PVC COATED METAL
CURB FLASHING
SYSTEMS:
ALL PVC**

**DETAIL NO:
MHP-123**