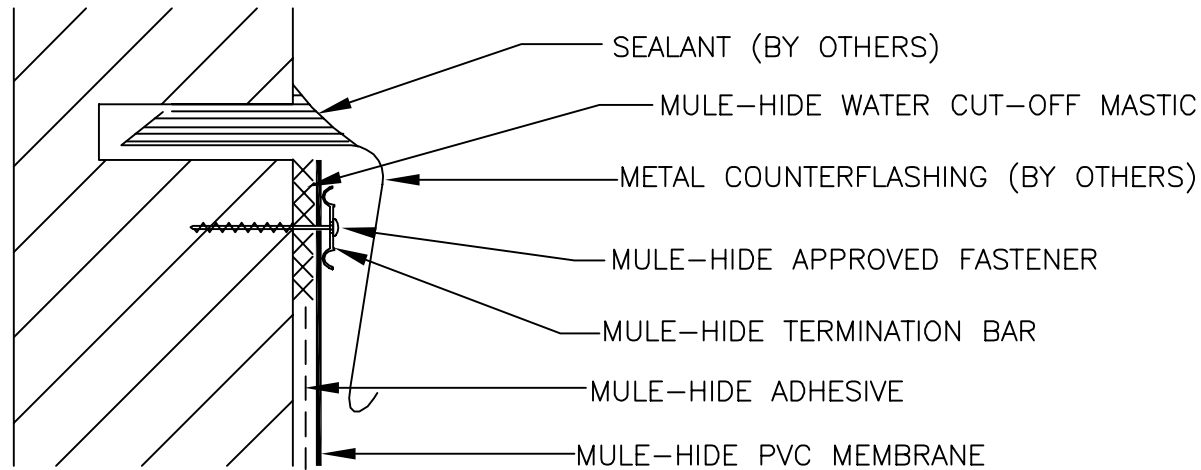


FOR USE ON 15 AND 20 YEAR WARRANTY PROJECTS.
 TERMINATION BAR IS NOT REQUIRED ON 10 YEAR
 WARRANTY PROJECTS (REFER TO MULE-HIDE DETAIL
 MHP-171)



NOTES:

1. DETAILS TO BE USED IN CONJUNCTION WITH STANDARD GUIDE SPECIFICATIONS CONTAINING REQUIREMENTS FOR NAILERS, INSULATION, SLIPSHEETS, ETC.
2. PVC EDGE SEALANT IS REQUIRED ON ALL CUT OR NON-ENCAPSULATED EDGES OF REINFORCED MEMBRANE. THIS INCLUDES FACTORY CUT MEMBRANE.
3. APPLY ON HARD SMOOTH SURFACE ONLY; NOT FOR USE ON WOOD.
4. DO NOT WRAP COMPRESSION TERMINATION AROUND CORNERS.

**MULE-HIDE
 PRODUCTS CO., INC.
 04/01/2007**

**15 AND 20 YEAR WARRANTY
 MECHANICAL TERMINATION
 SYSTEMS:
 ALL PVC**

**DETAIL NO:
 MHP-174**